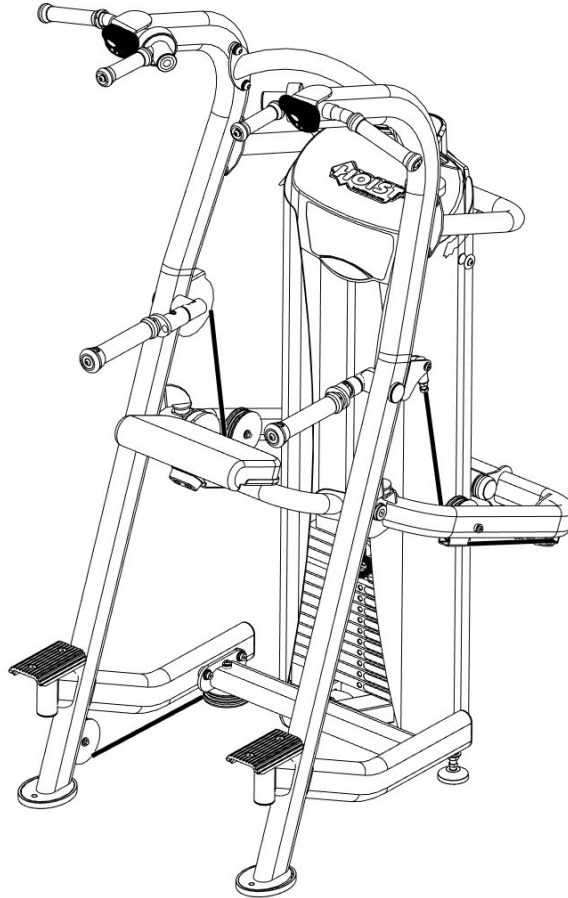


OWNER'S MANUAL



HD-3700

CHIN-DIP ASSIST



****WARNING!****

TO PREVENT POSSIBLE TIPPING, BOLT THIS UNIT TO THE EXERCISE FLOOR. FAILURE TO DO SO MAY RESULT IN SERIOUS INJURY OR DEATH.

Note: Both Serial Number and Model Number are Required when Ordering Parts

RECORD SERIAL NUMBER HERE

MACHINE CODE

Customer Service

(800) 548-5438

(858) 578-7676

Fax

(858) 578-9558



www.facebook.com/hoistfitness

OWNER'S MANUAL

CONTENTS

INSTRUCTIONS.....	02
FRAME ASSEMBLY.....	04
PRE-ASSEMBLY.....	33
DECAL PLACEMENT.....	35
DECAL REFERENCE.....	36
PART LIST.....	39
ABBREVIATIONS.....	43
BOLT SIZING CHART.....	44
WASHER SIZING CHART.....	45
MAINTANENCE SCHEDULE.....	47
GENERAL MAINTANENCE INFORMATION.....	48
WEIGHT TRAINING TIPS.....	49
EXERCISE LOG.....	50
LIMITED WARRANTY.....	51

OWNER'S MANUAL

INSTRUCTIONS

Before beginning assembly please take the time to read instructions thoroughly. Please use the various lists in this manual to make sure that all parts have been included in your shipment. When ordering, use part number and description from the lists. Use only HOIST replacement parts when servicing. Failure to do so will void your warranty and could result in personal injury.

HOIST equipment is designed to provide the smoothest, most effective exercise motion possible. After assembly, you should check all functions to ensure correct operation. If you experience problems, first recheck the assembly instructions to locate any possible errors made during assembly. If you are unable to correct the problem, call your authorized HOIST dealer. Be sure to have your serial number and this manual when calling. When all parts have been accounted for, continue on.

TOOLS REQUIRED

Ratchet Wrench

1/2", 9/16" and 3/4" Sockets

Adjustable Wrench

Rubber Mallet

Tape Measure

Level

SAE Hex Key Wrench Set

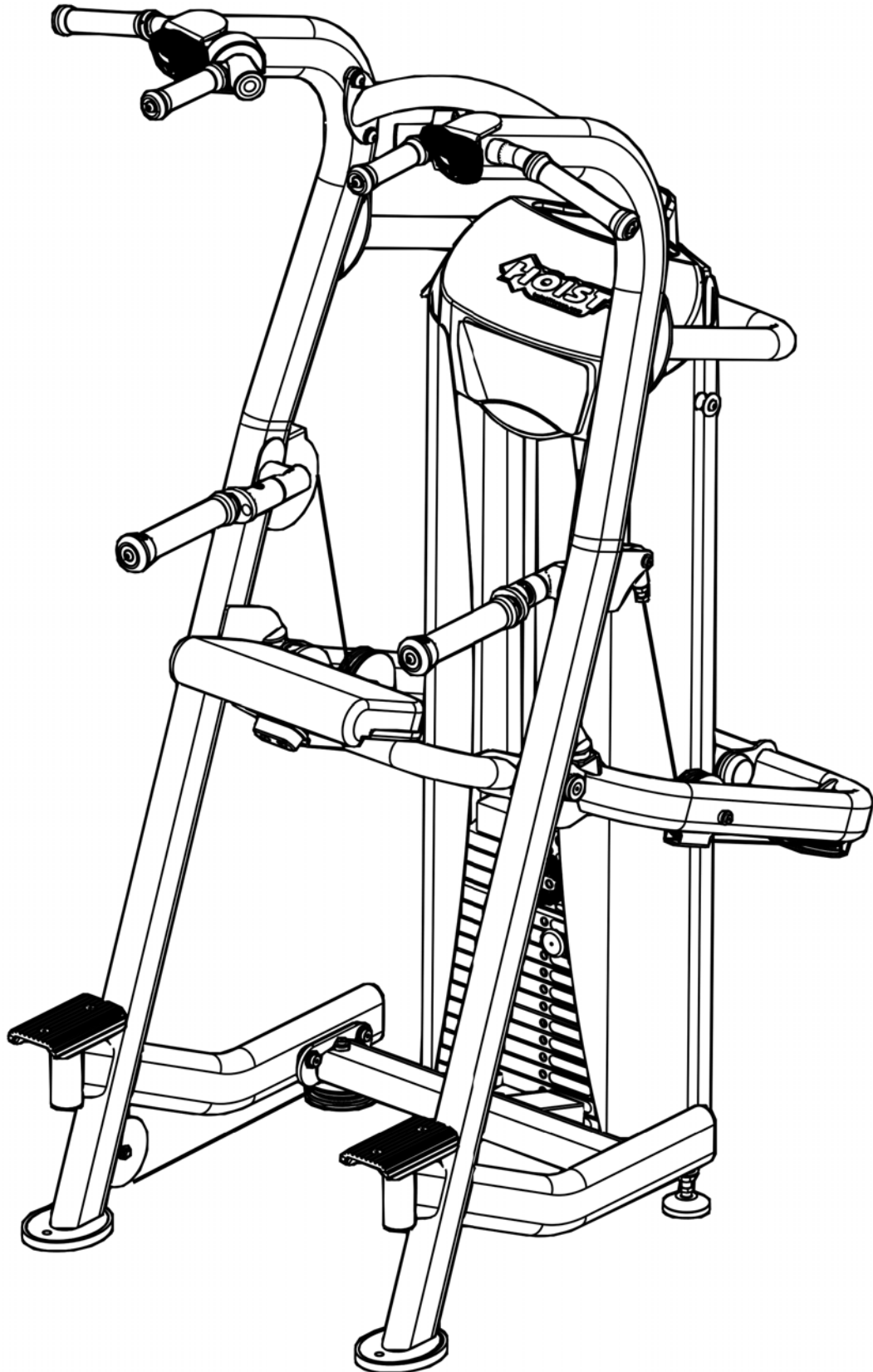
Two People

OWNER'S MANUAL

*****THIS PAGE WAS INTENTIONALLY LEFT BLANK*****

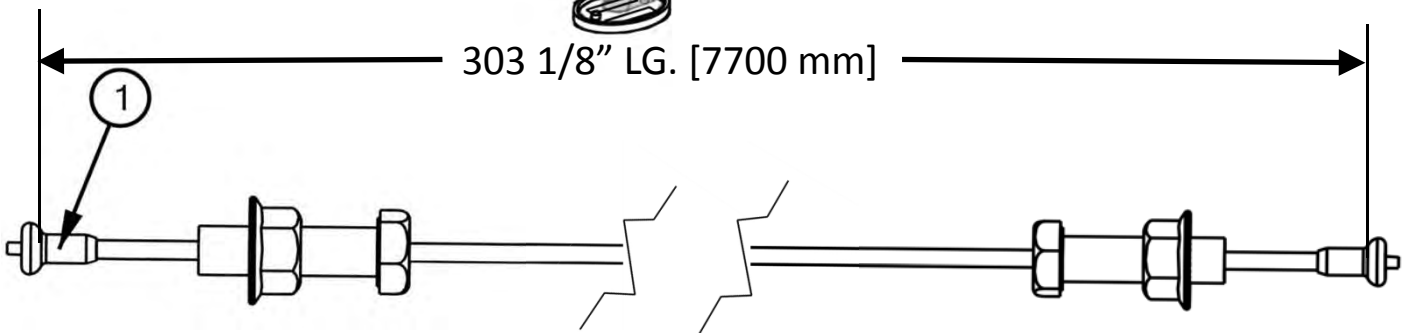
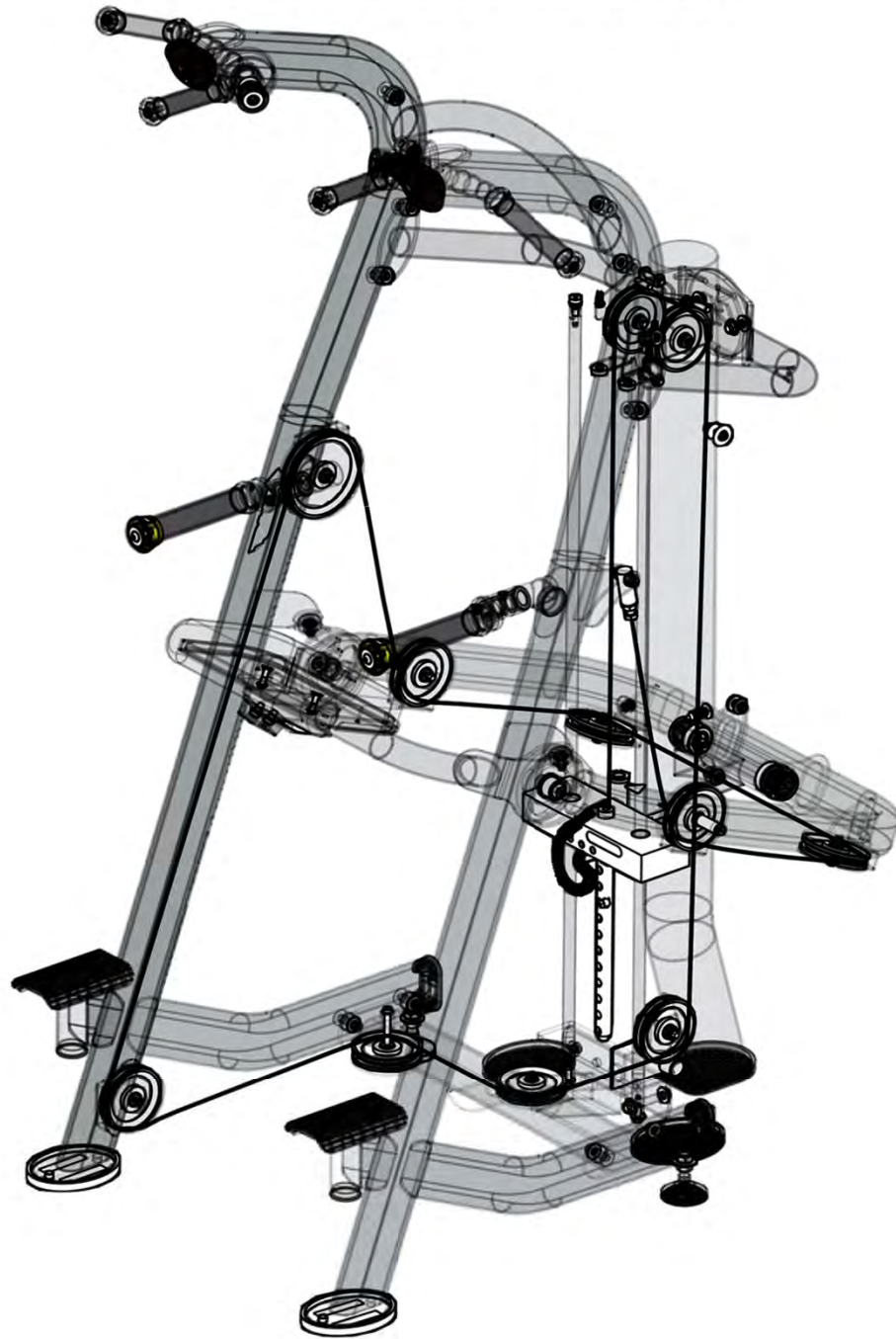
OWNER'S MANUAL

FRAME ASSEMBLY



OWNER'S MANUAL

CABLE PROFILE VIEW



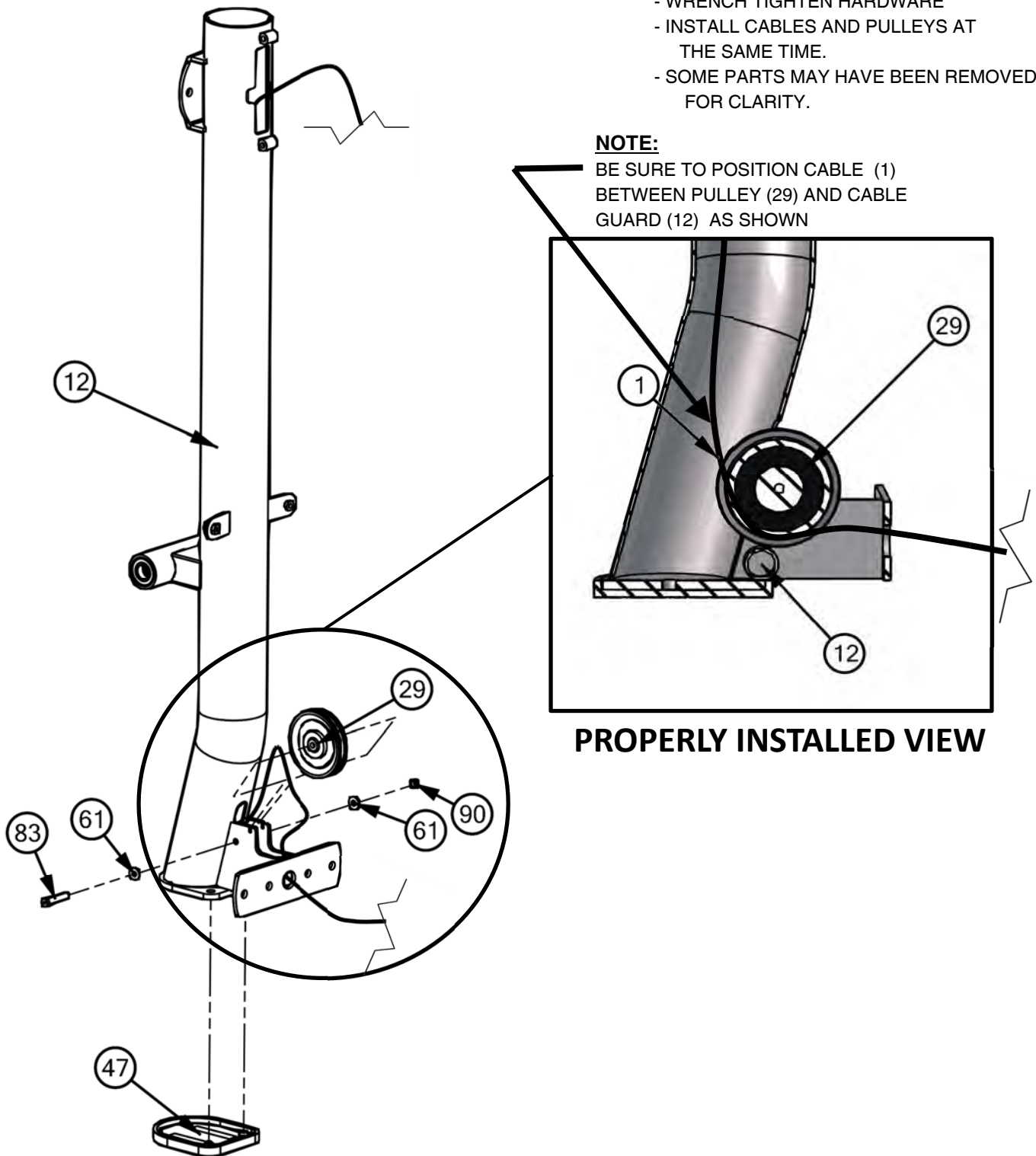
FRAME ASSEMBLY

NOTE:

- WRENCH TIGHTEN HARDWARE
- INSTALL CABLES AND PULLEYS AT THE SAME TIME.
- SOME PARTS MAY HAVE BEEN REMOVED FOR CLARITY.

NOTE:

BE SURE TO POSITION CABLE (1) BETWEEN PULLEY (29) AND CABLE GUARD (12) AS SHOWN

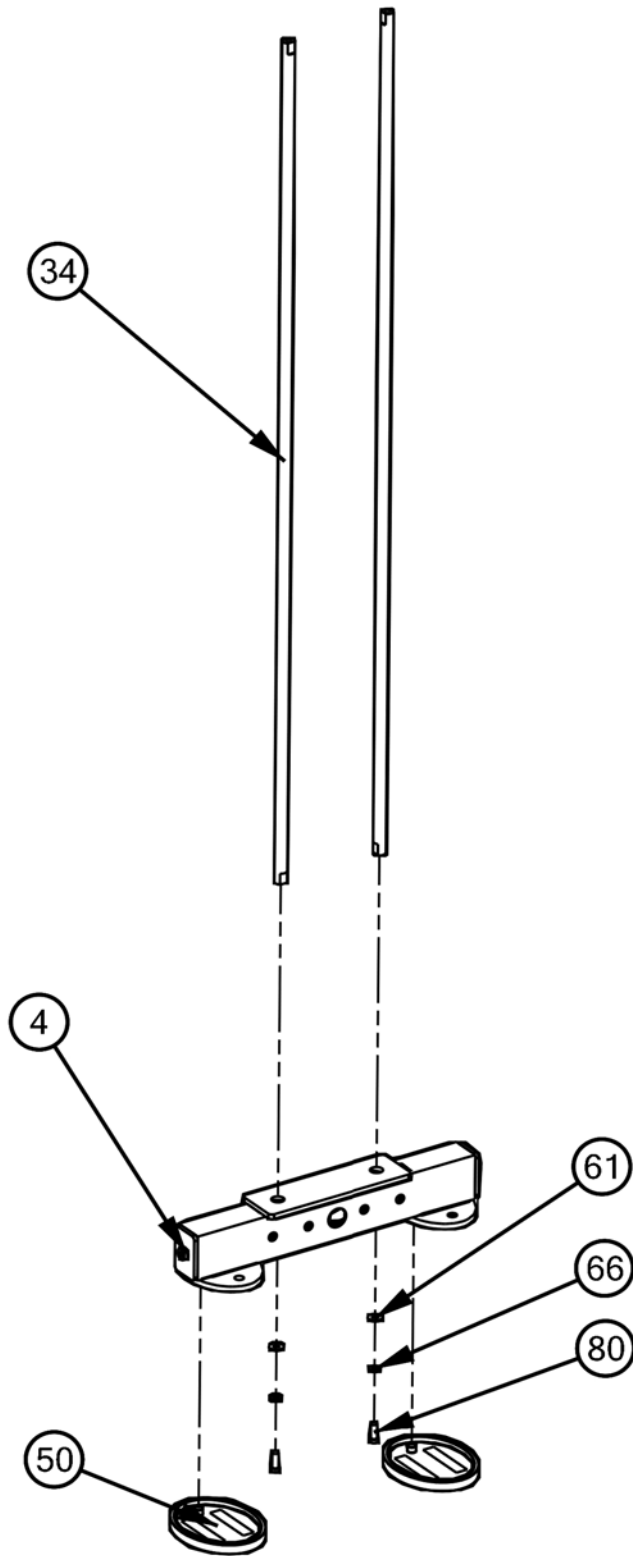


OWNER'S MANUAL

FRAME ASSEMBLY

NOTE:

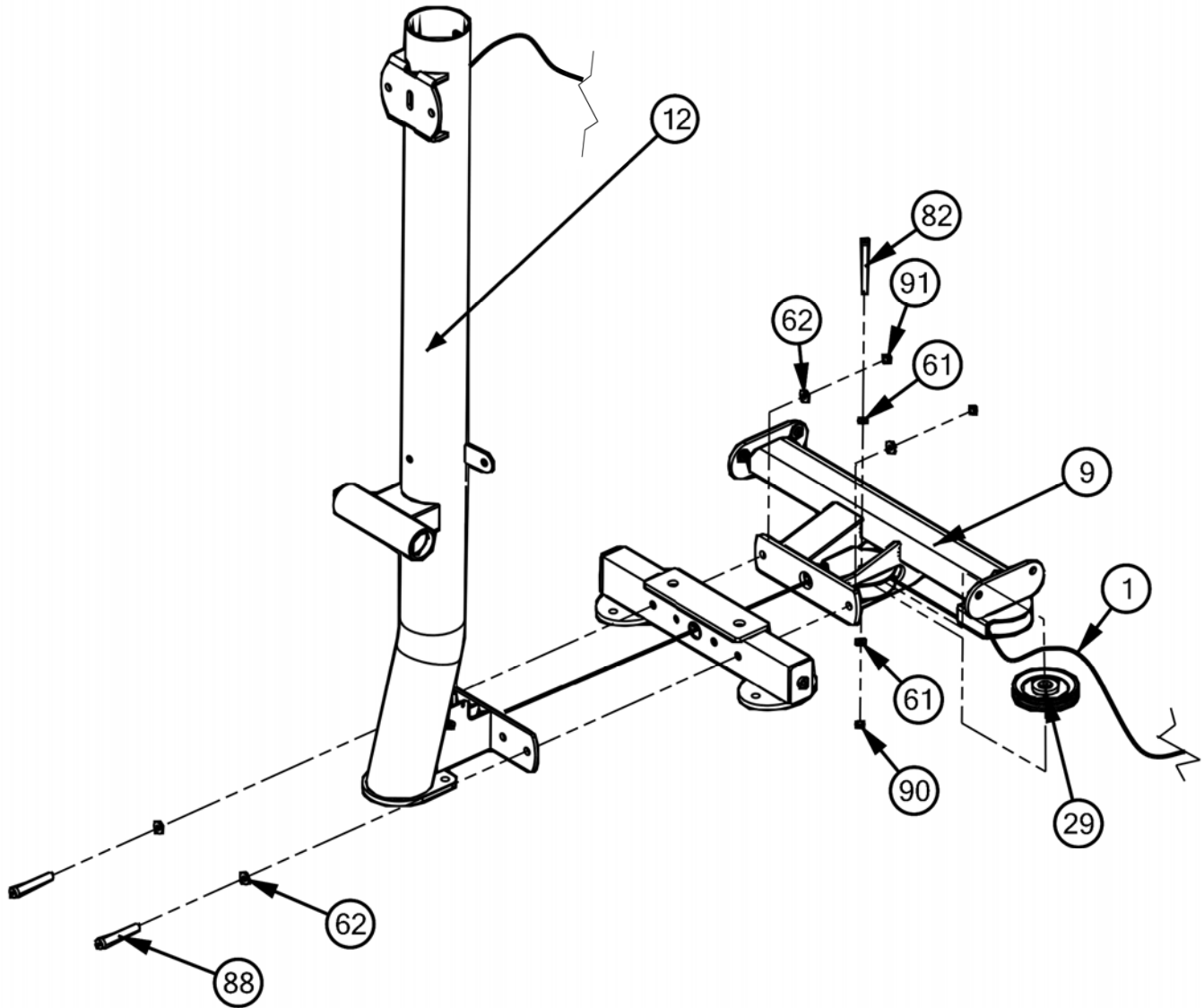
- WRENCH TIGHTEN HARWARE
- SOME PARTS MAY HAVE BEEN REMOVED FOR CLARITY.



FRAME ASSEMBLY

NOTE:

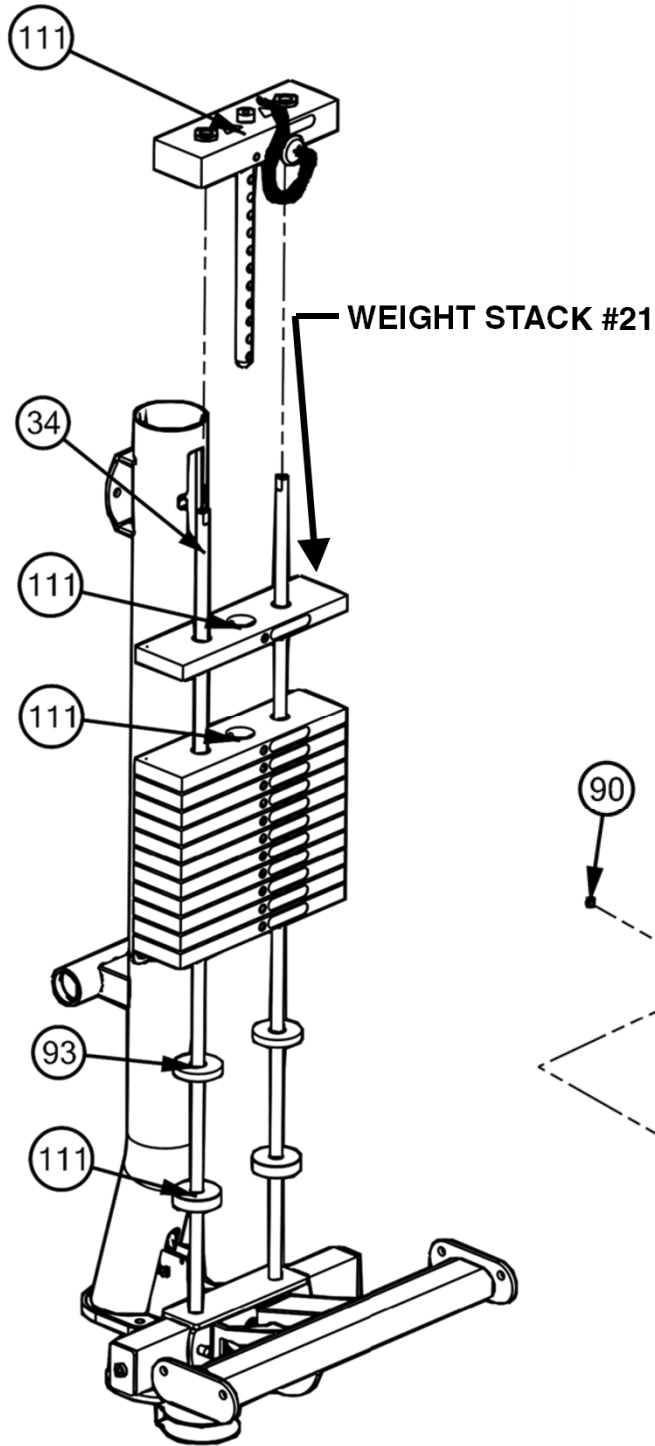
- HAND TIGHTEN HARDWARE
- WRENCH TIGHTEN HARDWARE (82)
- INSTALL CABLES AND PULLEYS AT THE SAME TIME
- SOME PARTS MAY HAVE BEEN REMOVED



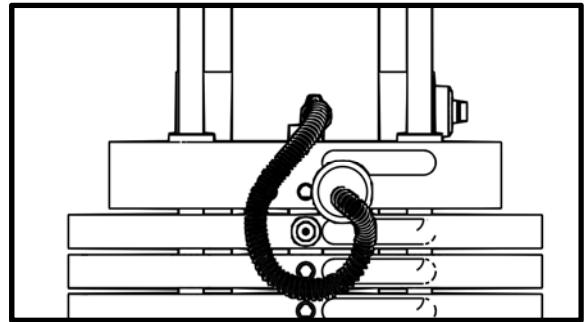
FRAME ASSEMBLY

NOTE:

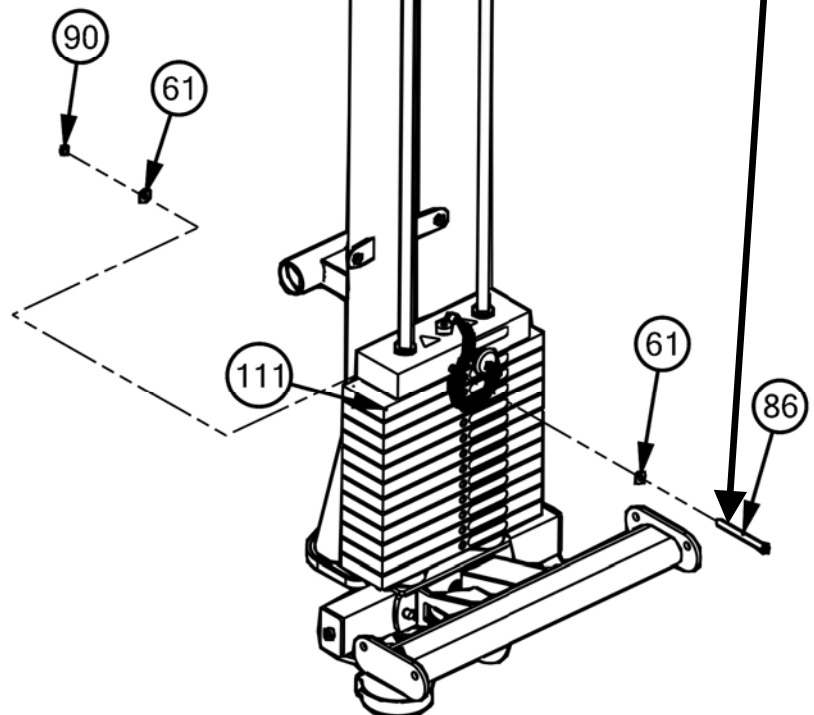
- WRENCH TIGHTEN HARDWARE.
- SOME PARTS MAY HAVE BEEN REMOVED FOR CLARITY.



STEP 1



INSTALL BOLT INTO SECOND WEIGHT PLATE FROM THE TOP



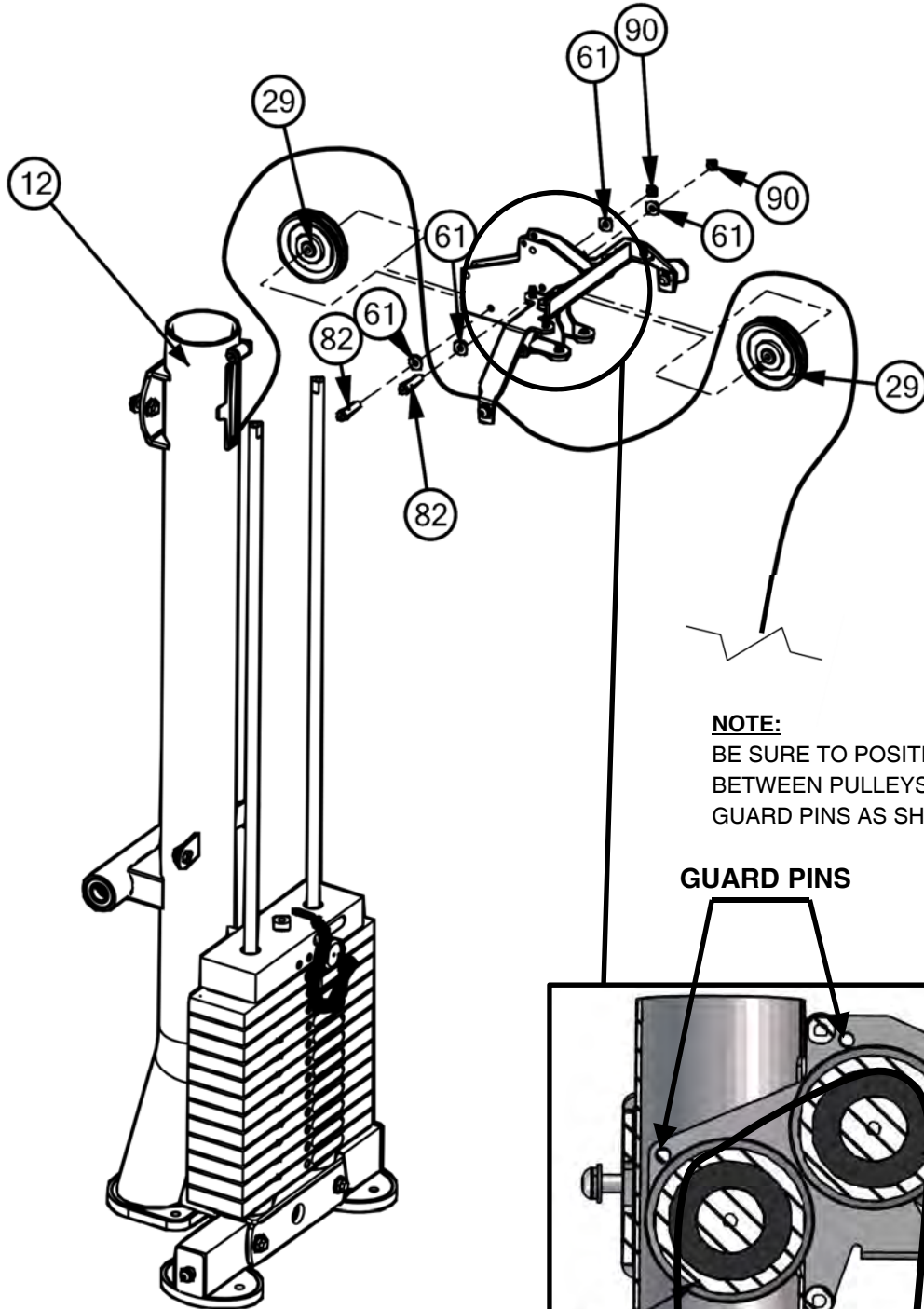
STEP 2

OWNER'S MANUAL

FRAME ASSEMBLY

NOTE:

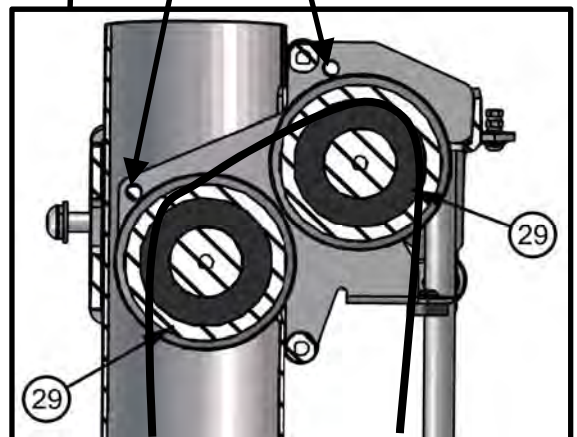
- WRENCH TIGHTEN HARDWARE.
- INSTALL CABLES AND PULLEYS AT THE SAME TIME
- SOME PARTS MAY HAVE BEEN REMOVED



NOTE:

- BE SURE TO POSITION CABLE (1) BETWEEN PULLEYS (29) AND GUARD PINS AS SHOWN

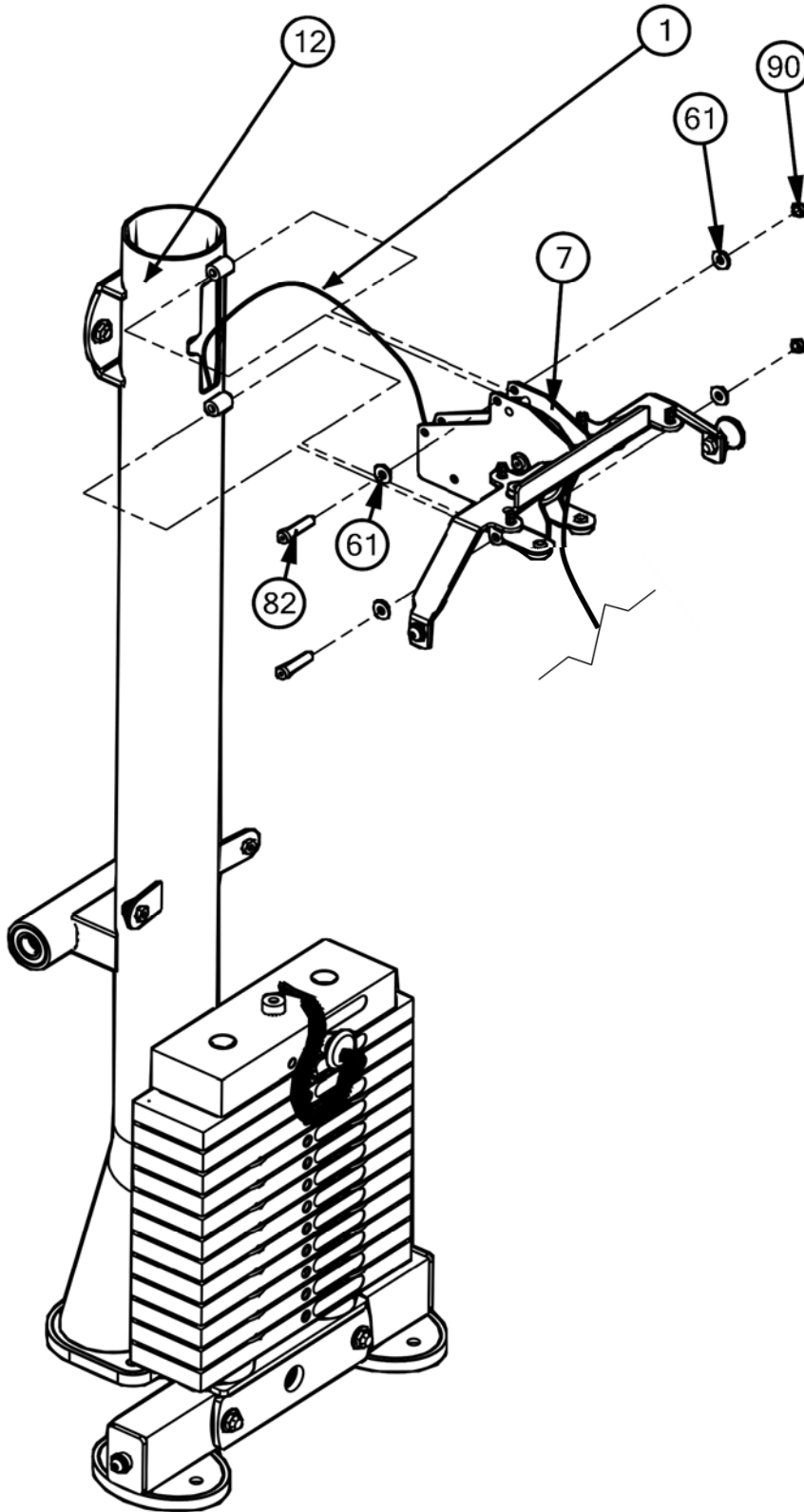
GUARD PINS



FRAME ASSEMBLY

NOTE:

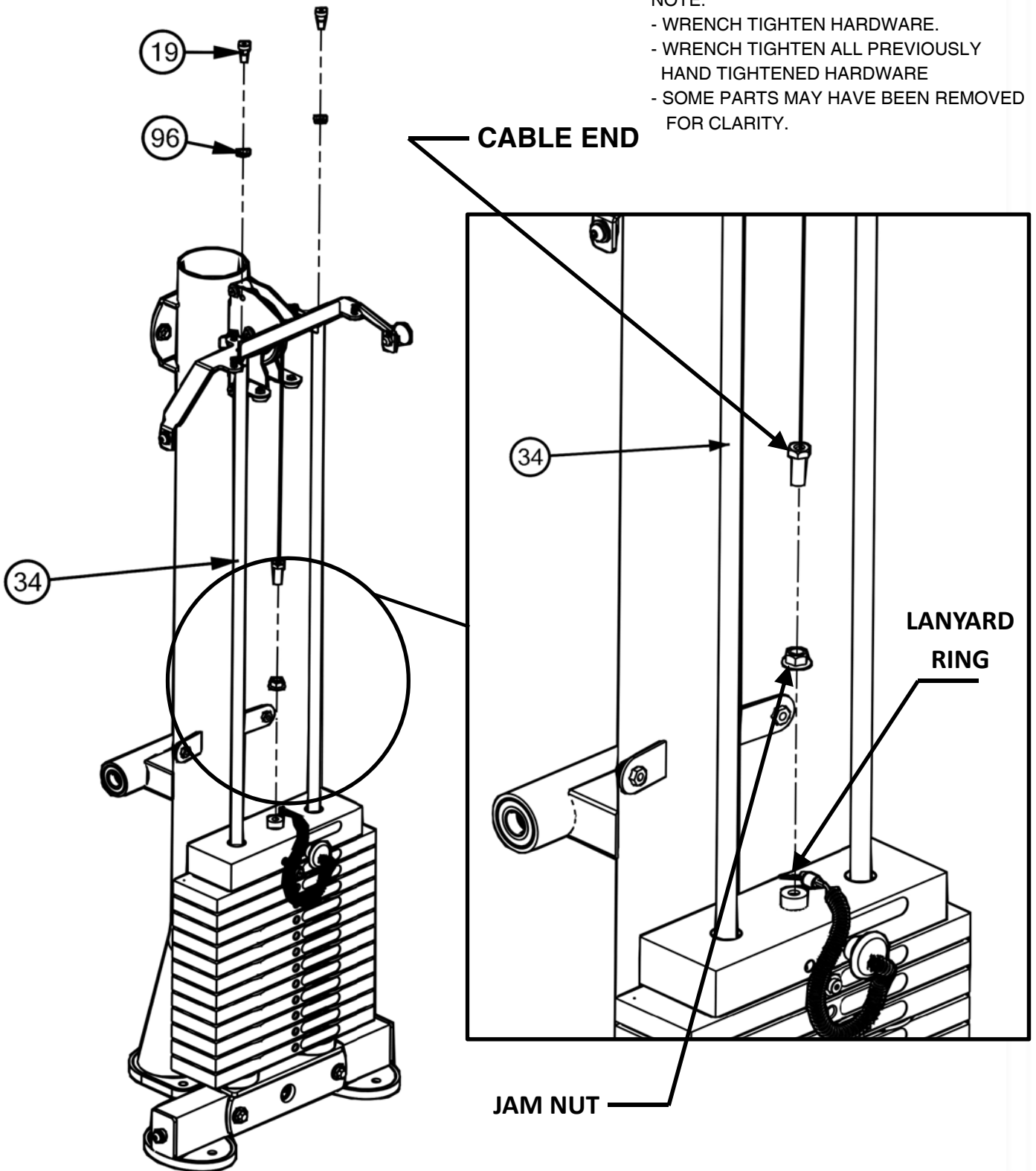
- HAND TIGHTEN HARDWARE
- SOME PARTS MAY HAVE BEEN REMOVED FOR CLARITY.



FRAME ASSEMBLY

NOTE:

- WRENCH TIGHTEN HARDWARE.
- WRENCH TIGHTEN ALL PREVIOUSLY HAND TIGHTENED HARDWARE
- SOME PARTS MAY HAVE BEEN REMOVED FOR CLARITY.

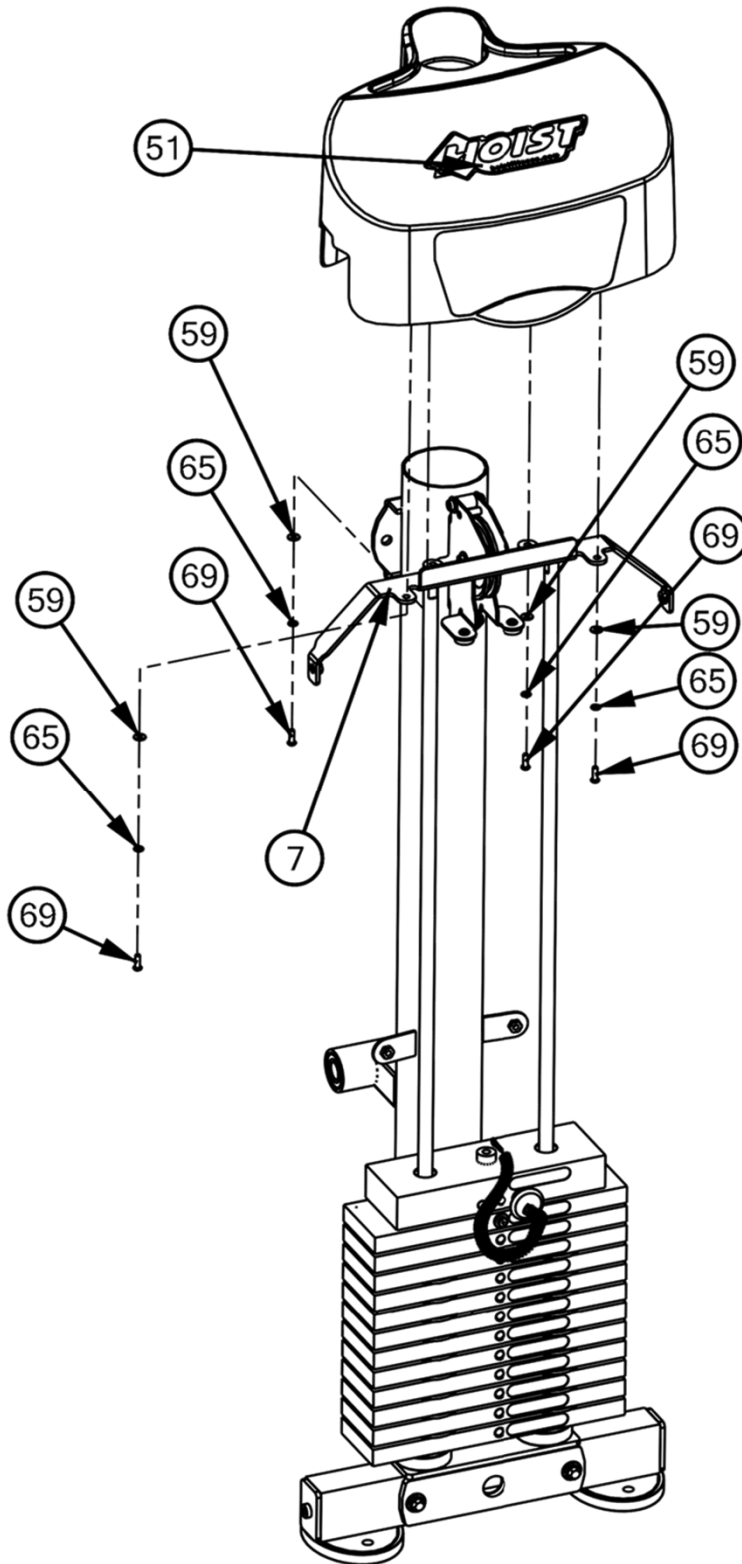


OWNER'S MANUAL

FRAME ASSEMBLY

NOTE:

- WRENCH TIGHTEN HARDWARE
- SOME PARTS MAY HAVE BEEN REMOVED FOR CLARITY.

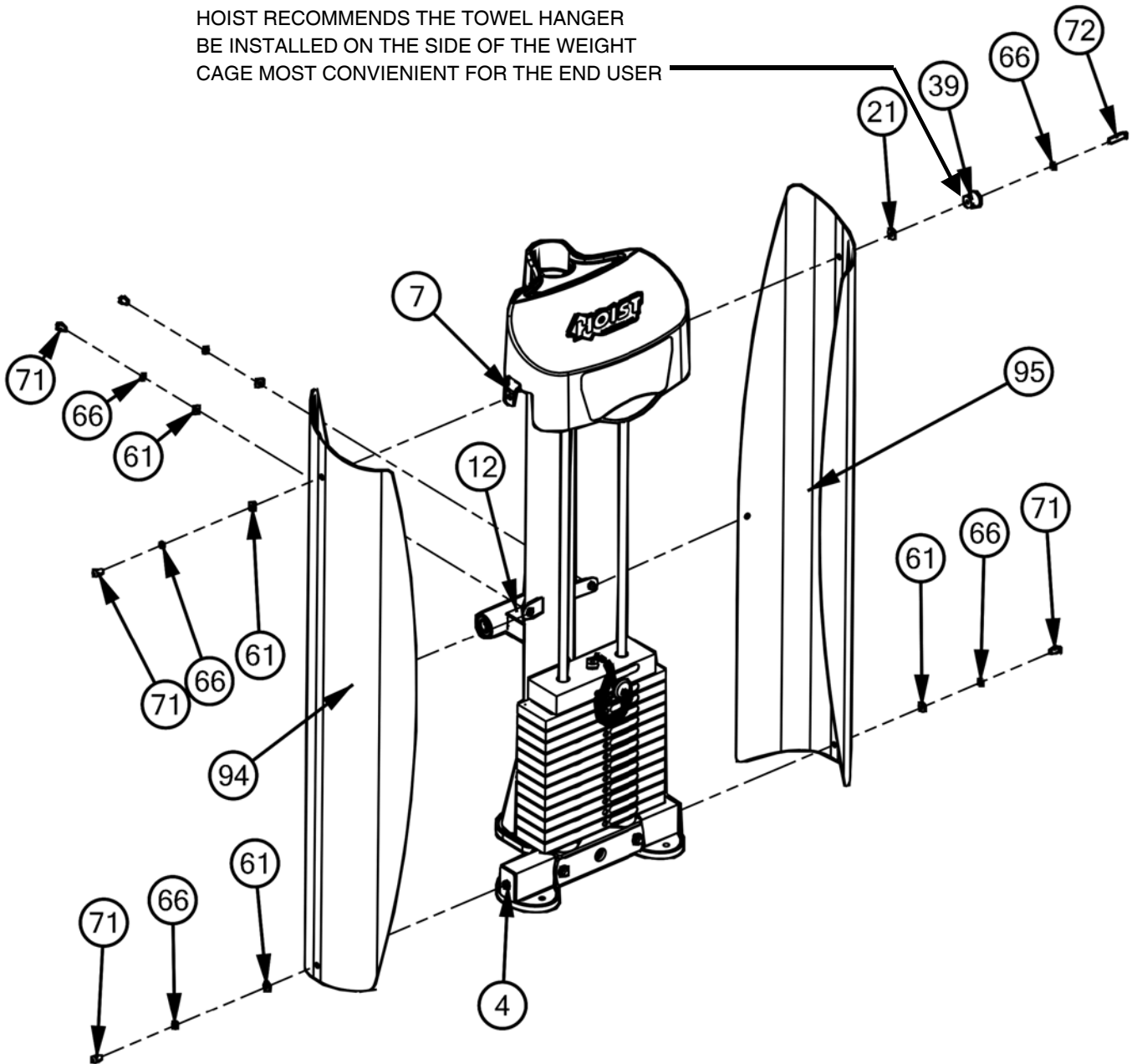


FRAME ASSEMBLY

NOTE:

- WRENCH TIGHTEN HARDWARE
- SOME PARTS MAY HAVE BEEN REMOVED FOR CLARITY.

HOIST RECOMMENDS THE TOWEL HANGER BE INSTALLED ON THE SIDE OF THE WEIGHT CAGE MOST CONVENIENT FOR THE END USER



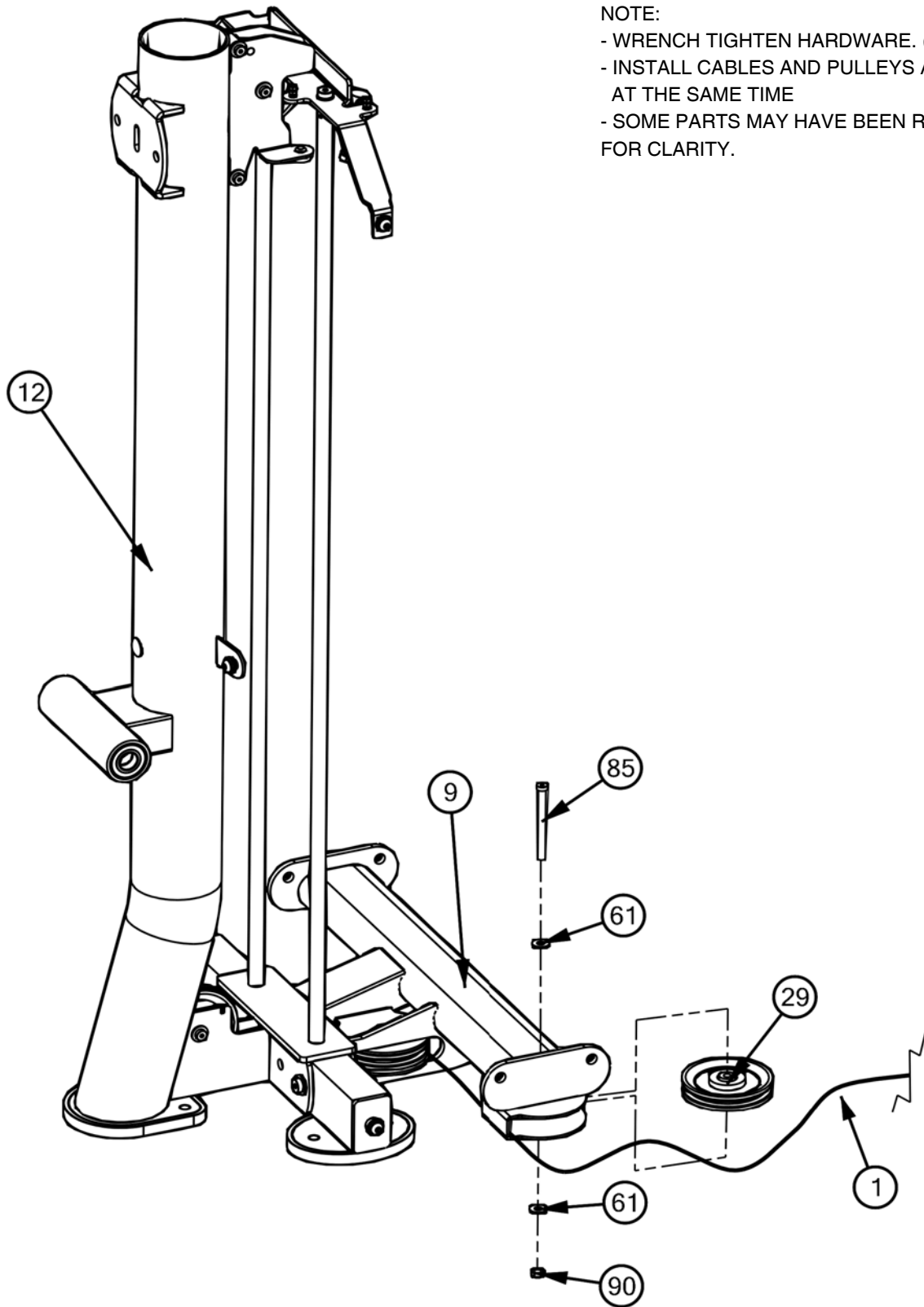
IMPORTANT

AT THIS STEP, TAKE TIME TO ASSURE THAT YOUR UNIT IS ASSEMBLED SQUARE AND PERPENDICULAR. USE A LEVEL TO CHECK THAT THE GUIDE RODS ARE PERPENDICULAR IN BOTH DIRECTIONS. IF THEY ARE NOT PERPENDICULAR IN BOTH DIRECTIONS, IT WILL BE NECESSARY TO LOOSEN SOME FRAME HARDWARE TO RE-ALIGN THE FRAME AND RETIGHTEN BOLTS.

FRAME ASSEMBLY

NOTE:

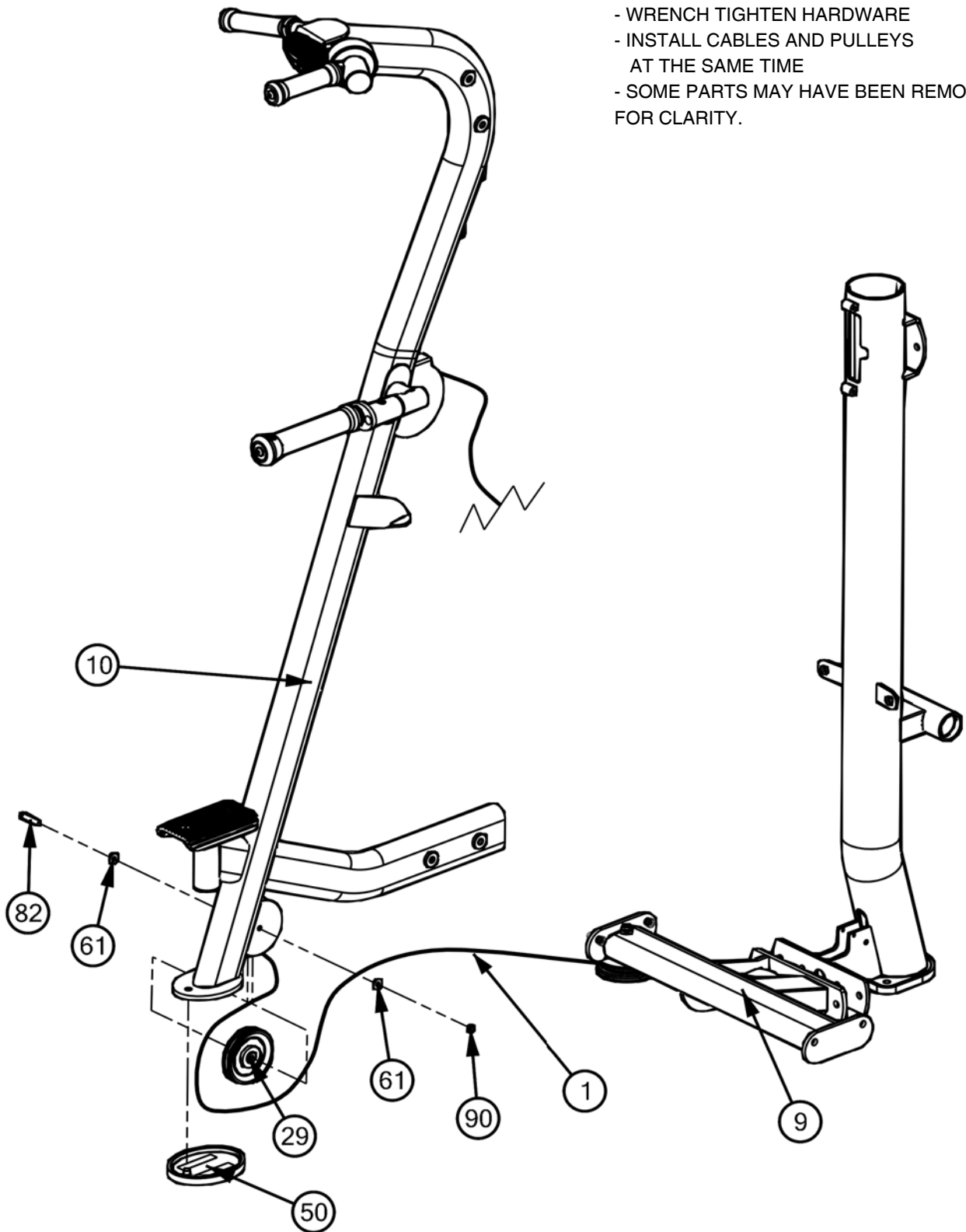
- WRENCH TIGHTEN HARDWARE. (85)
- INSTALL CABLES AND PULLEYS AT THE SAME TIME
- SOME PARTS MAY HAVE BEEN REMOVED FOR CLARITY.



FRAME ASSEMBLY

NOTE:

- WRENCH TIGHTEN HARDWARE
- INSTALL CABLES AND PULLEYS AT THE SAME TIME
- SOME PARTS MAY HAVE BEEN REMOVED FOR CLARITY.

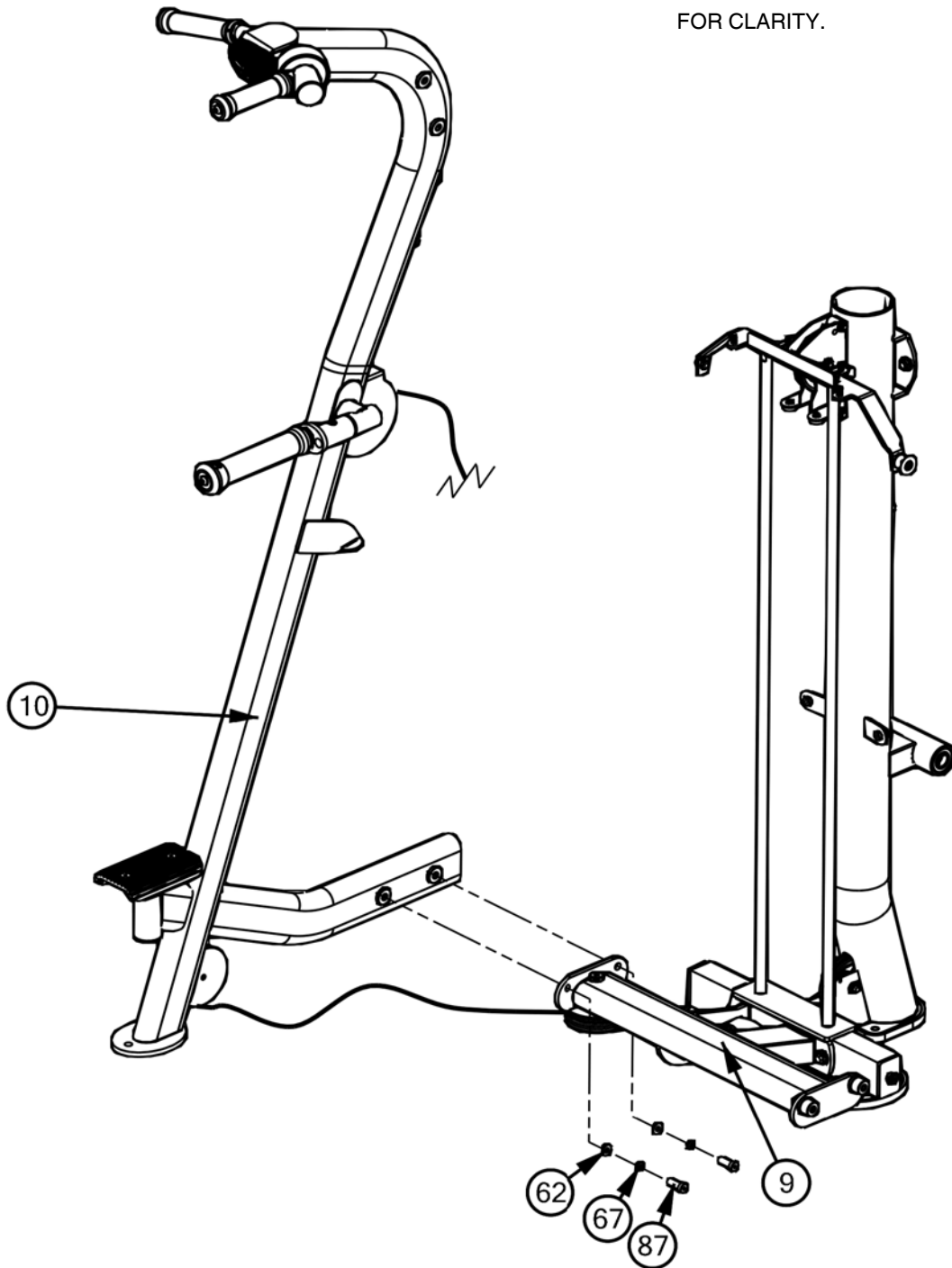


OWNER'S MANUAL

FRAME ASSEMBLY

NOTE:

- HAND TIGHTEN HARDWARE.
- SOME PARTS MAY HAVE BEEN REMOVED FOR CLARITY.

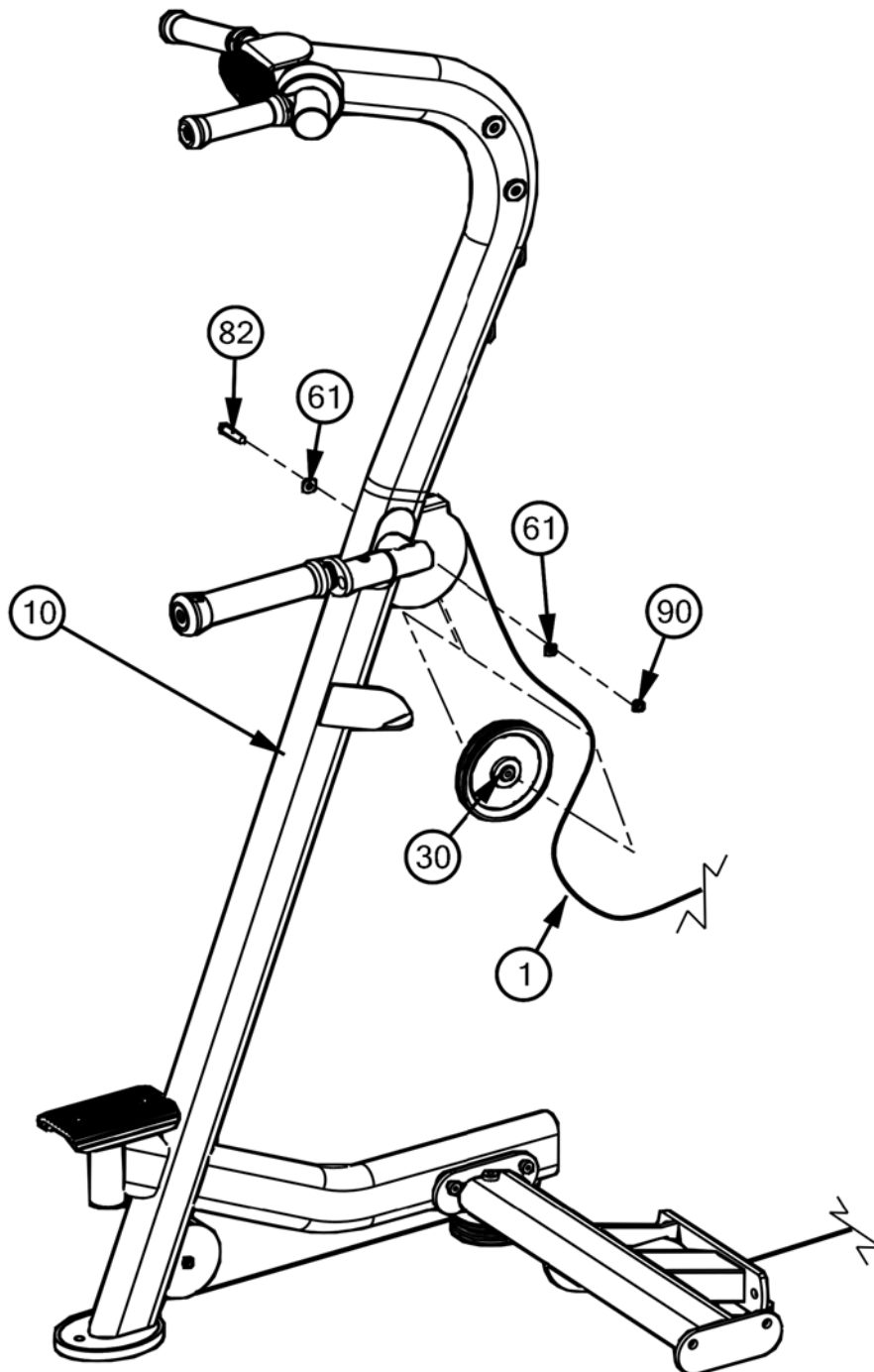


OWNER'S MANUAL

FRAME ASSEMBLY

NOTE:

- WRENCH TIGHTEN HARDWARE
- INSTALL CABLES AND PULLEYS AT THE SAME TIME
- SOME PARTS MAY HAVE BEEN REMOVED FOR CLARITY.

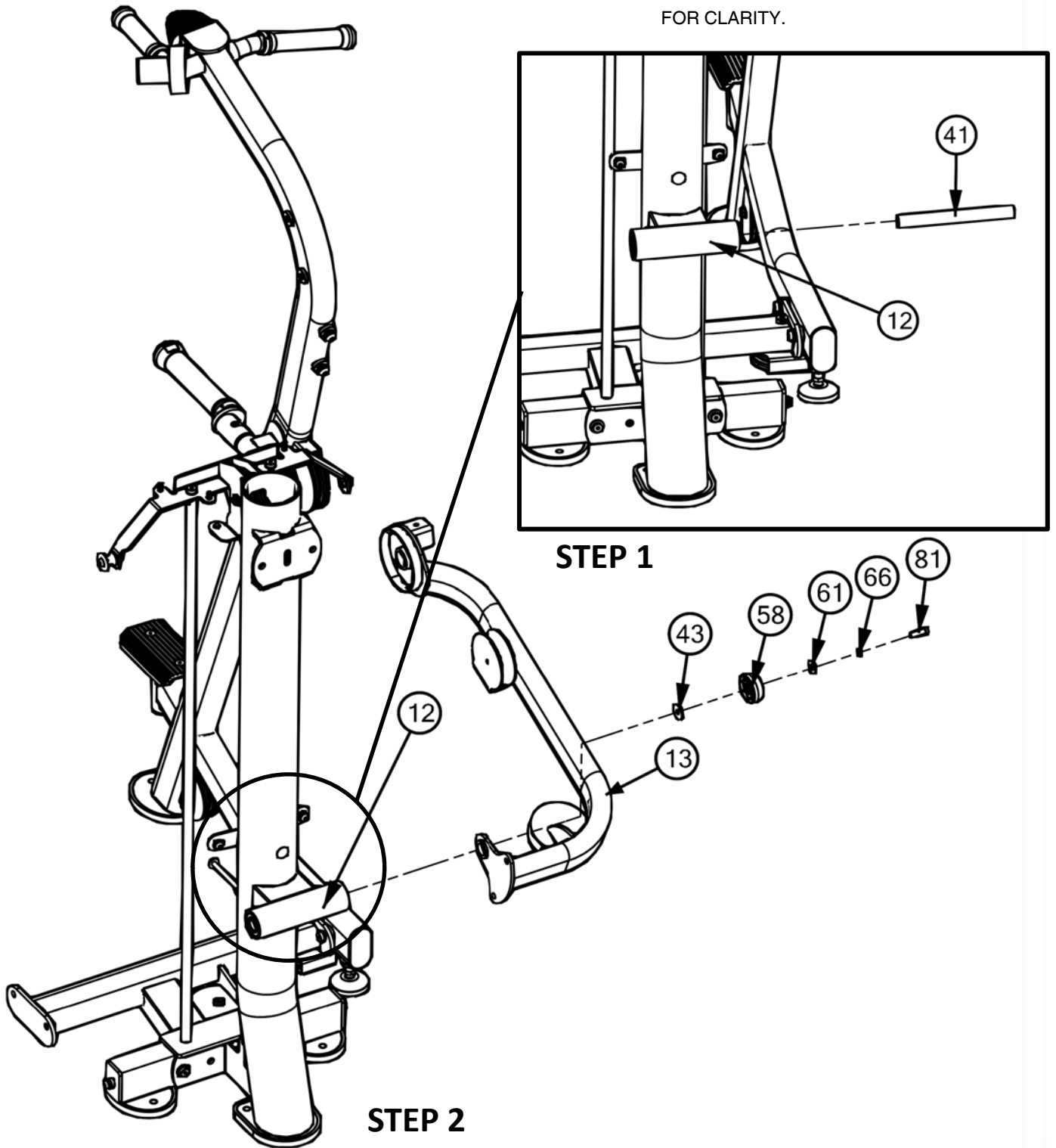


OWNER'S MANUAL

FRAME ASSEMBLY

NOTE:

- HAND TIGHTEN HARDWARE.
- SOME PARTS MAY HAVE BEEN REMOVED FOR CLARITY.

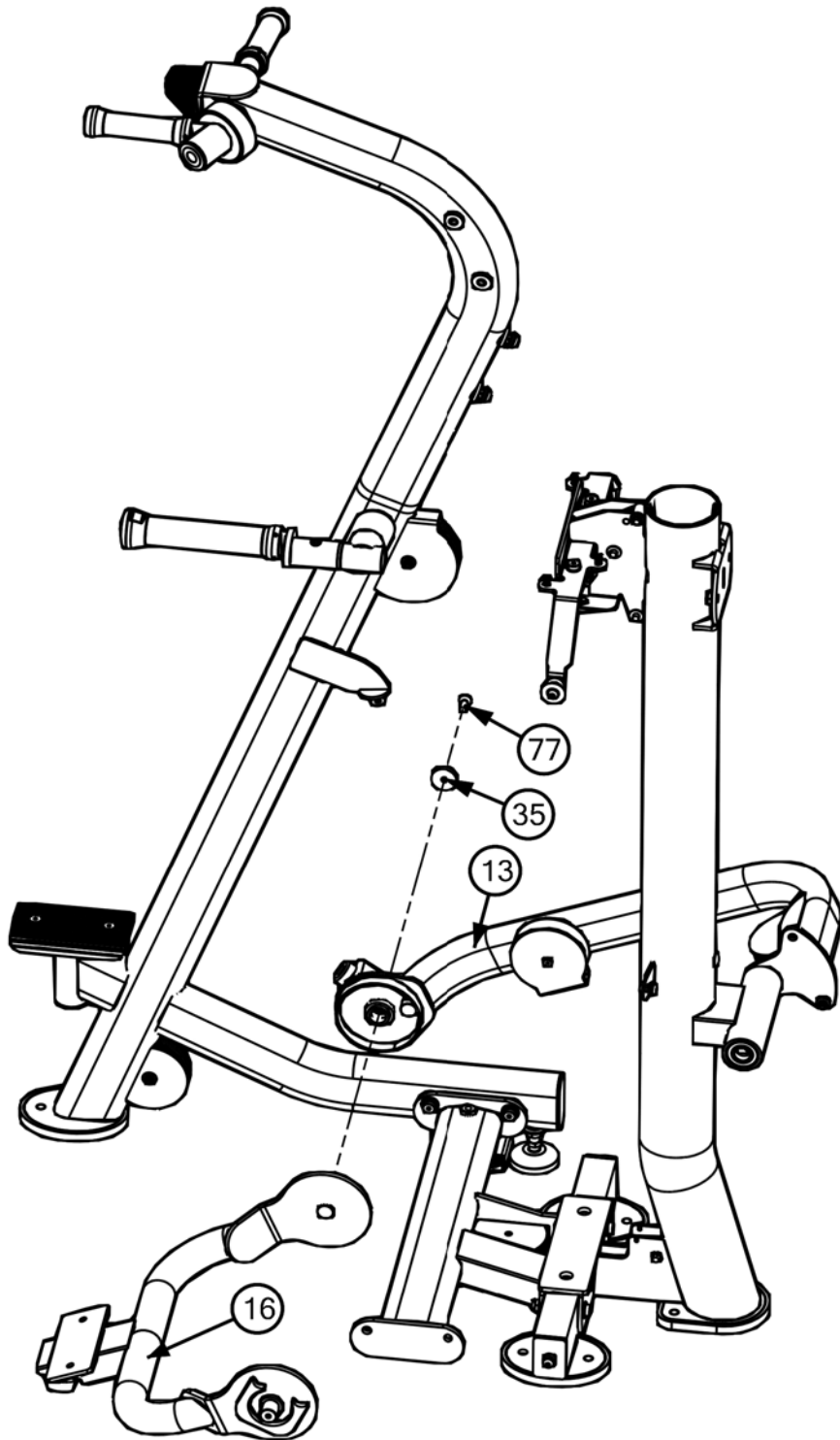


OWNER'S MANUAL

NOTE:

- HAND TIGHTEN HARDWARE
- SOME PARTS MAY HAVE BEEN REMOVED FOR CLARITY.

FRAME ASSEMBLY

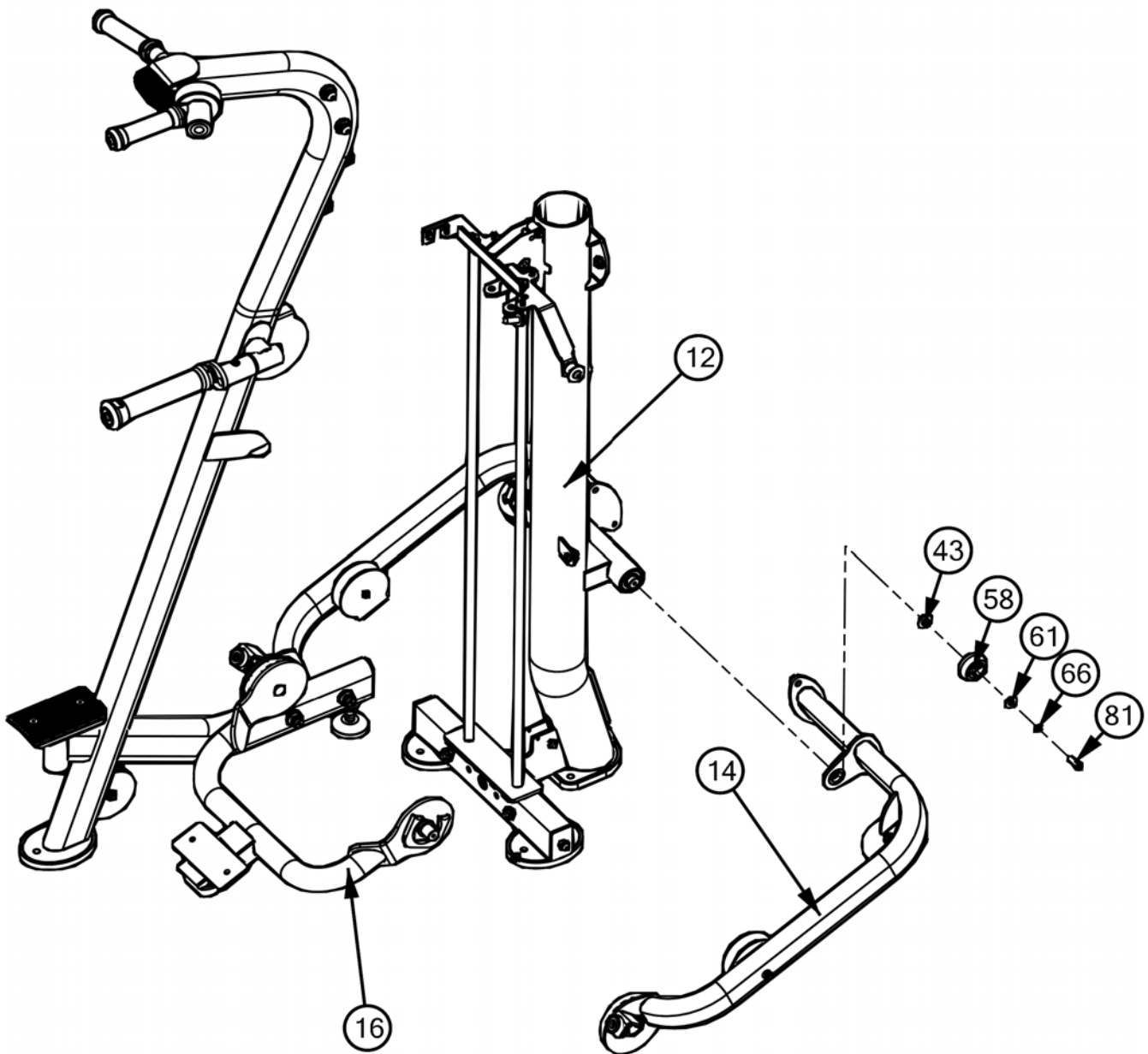


OWNER'S MANUAL

FRAME ASSEMBLY

NOTE:

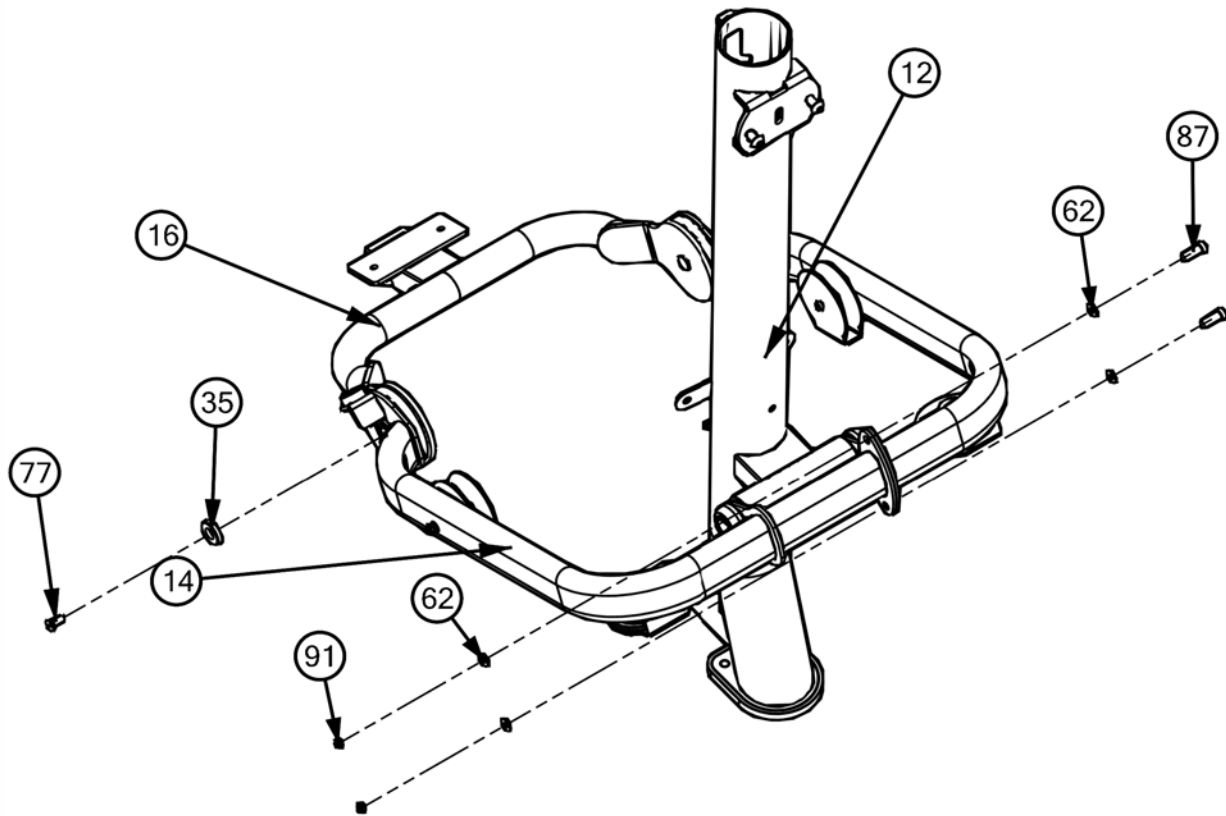
- HAND TIGHTEN HARDWARE.
- SOME PARTS MAY HAVE BEEN REMOVED FOR CLARITY.



FRAME ASSEMBLY

NOTE:

- HAND TIGHTEN HARDWARE
- SOME PARTS MAY HAVE BEEN REMOVED FOR CLARITY.

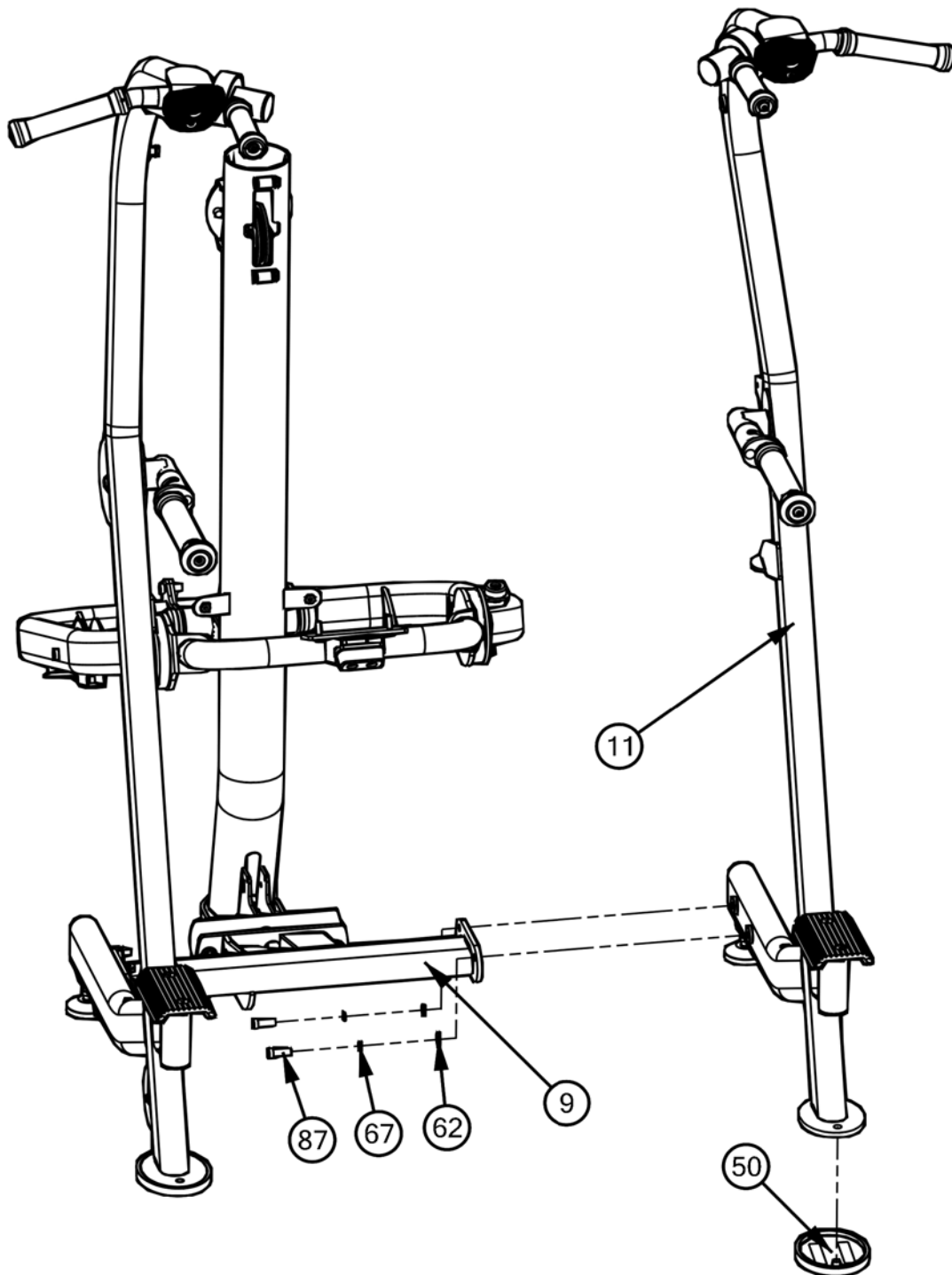


OWNER'S MANUAL

FRAME ASSEMBLY

NOTE:

- HAND TIGHTEN HARDWARE.
- SOME PARTS MAY HAVE BEEN REMOVED FOR CLARITY.

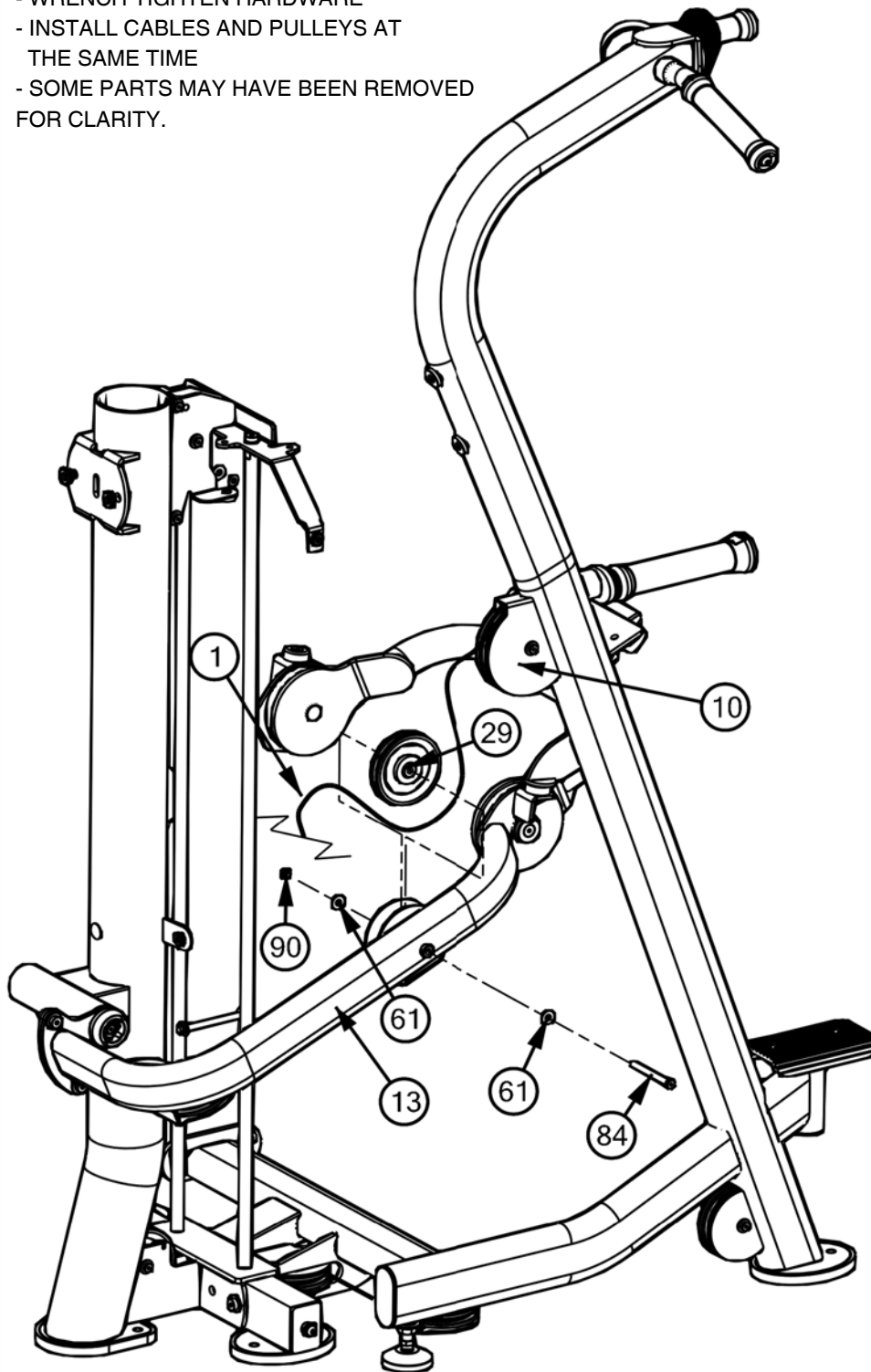


OWNER'S MANUAL

FRAME ASSEMBLY

NOTE:

- WRENCH TIGHTEN HARDWARE
- INSTALL CABLES AND PULLEYS AT THE SAME TIME
- SOME PARTS MAY HAVE BEEN REMOVED FOR CLARITY.

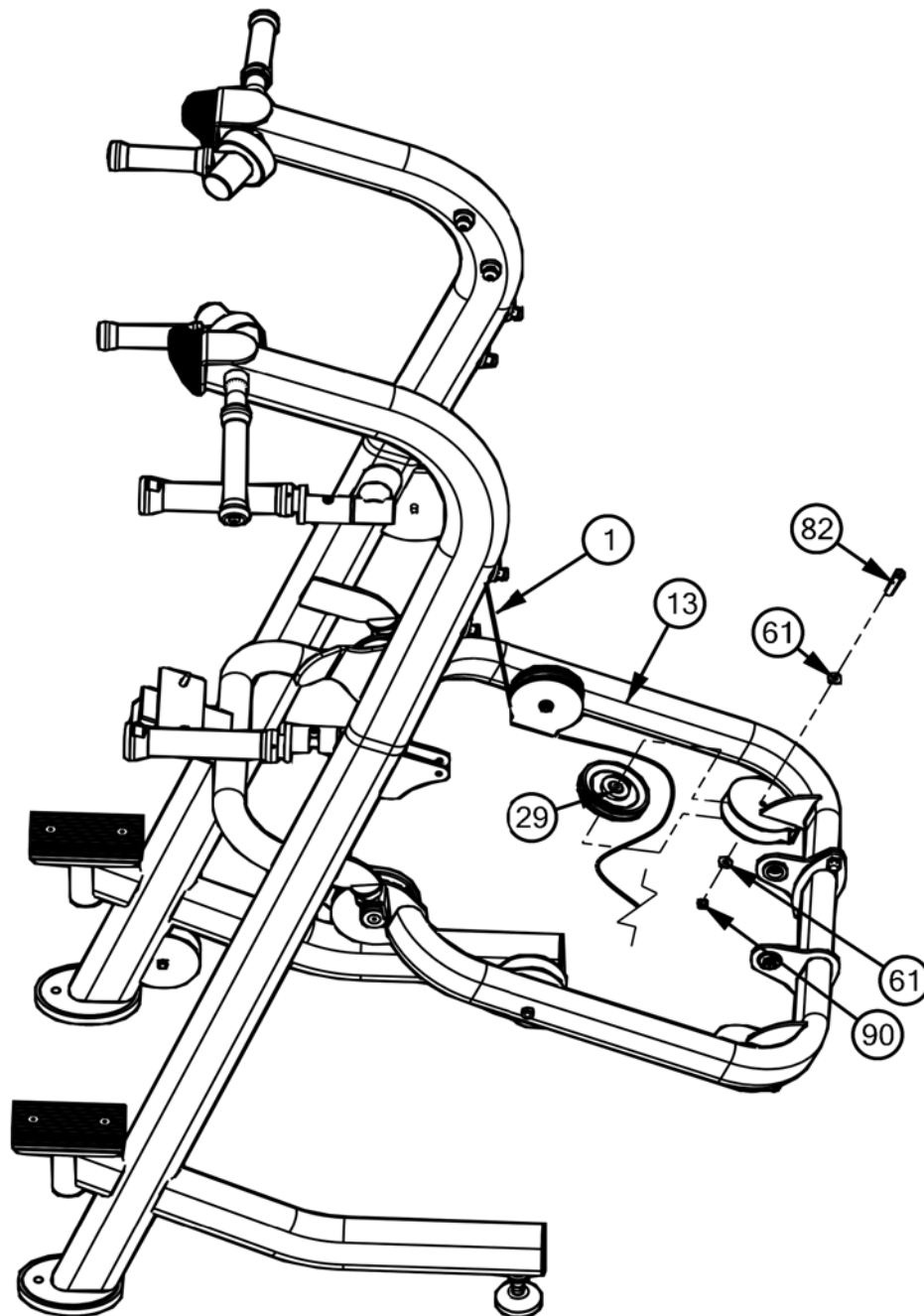


OWNER'S MANUAL

FRAME ASSEMBLY

NOTE:

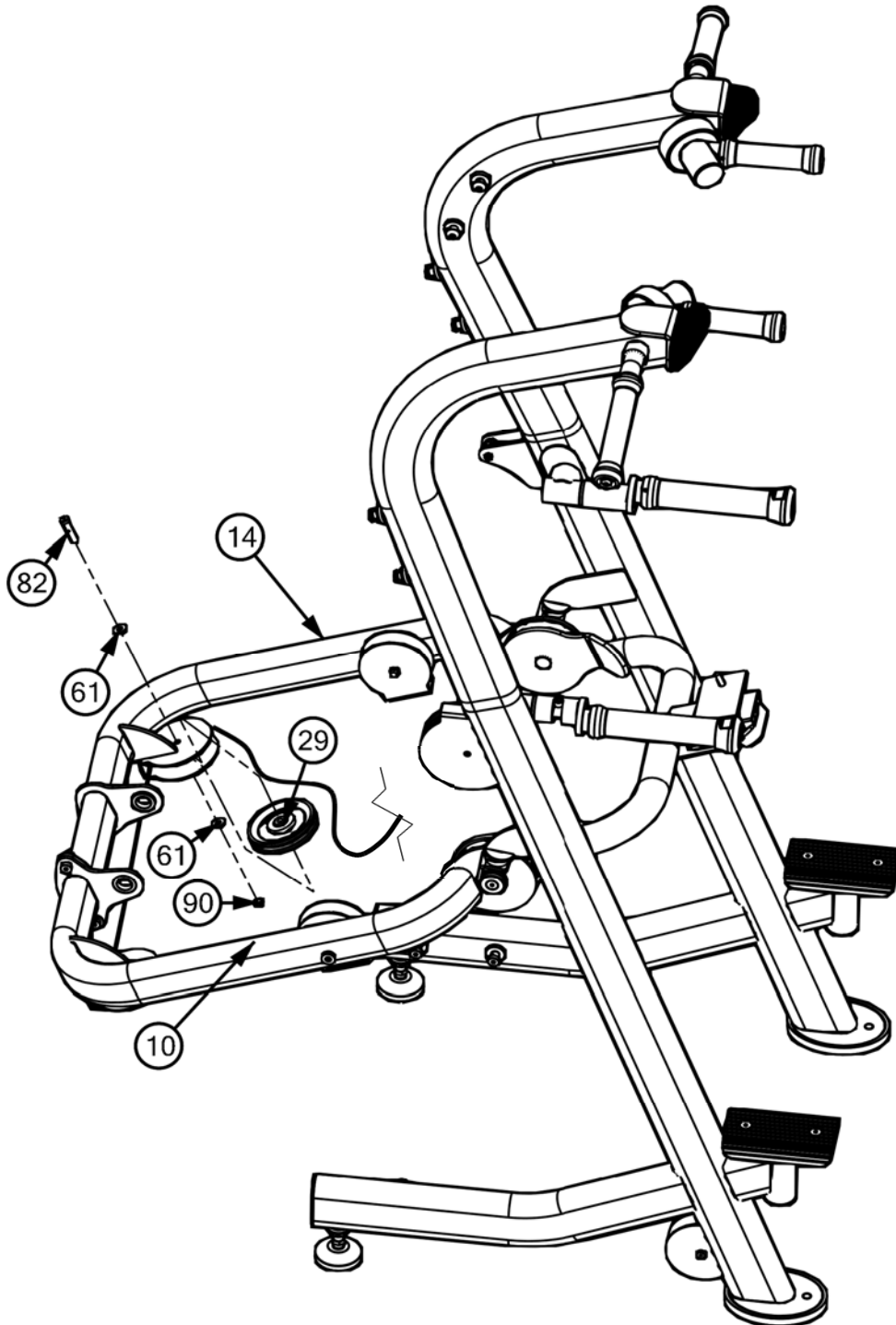
- WRENCH TIGHTEN HARDWARE.
- INSTALL CABLES AND PULLEYS AT THE SAME TIME
- SOME PARTS MAY HAVE BEEN REMOVED FOR CLARITY.



FRAME ASSEMBLY

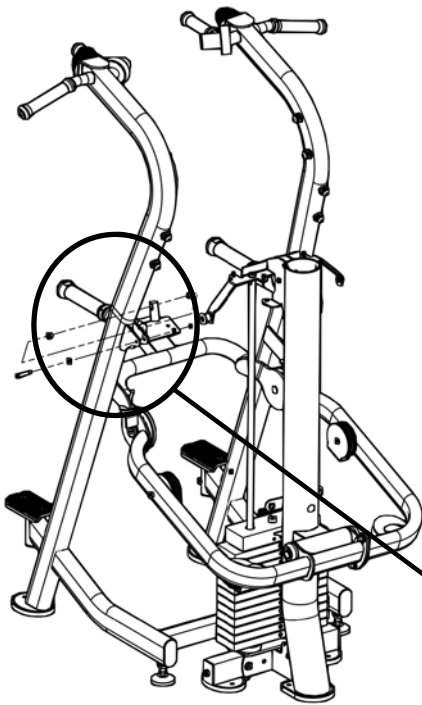
NOTE:

- WRENCH TIGHTEN HARDWARE
- INSTALL CABLES AND PULLEYS AT THE SAME TIME
- SOME PARTS MAY HAVE BEEN REMOVED FOR CLARITY.



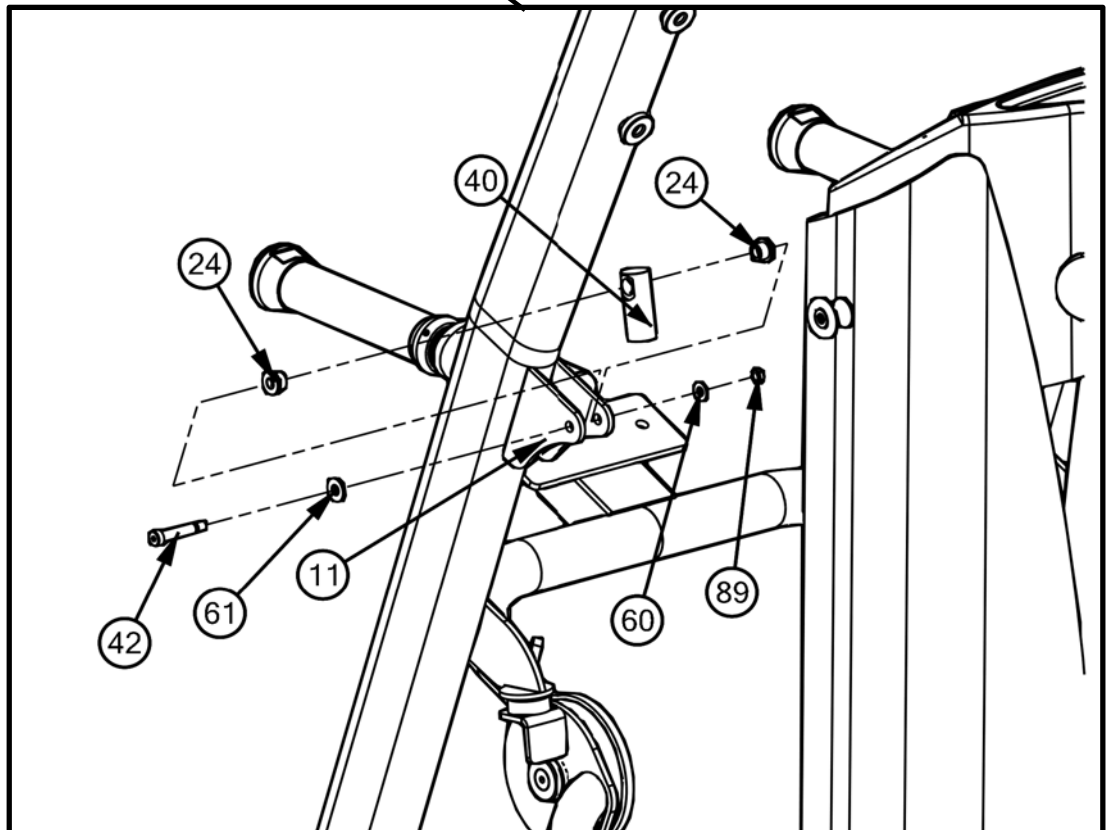
OWNER'S MANUAL

FRAME ASSEMBLY



NOTE:

- WRENCH TIGHTEN HARDWARE THEN BACK OFF JUST ENOUGH TO ALLOW CABLE ANCHOR (40) TO PIVOT FREELY
- SOME PARTS MAY HAVE BEEN REMOVED FOR CLARITY.

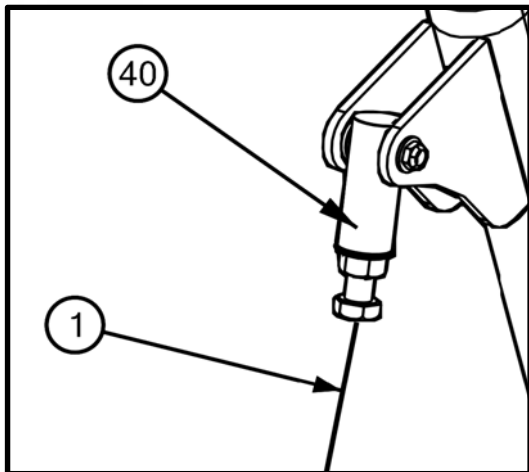


OWNER'S MANUAL

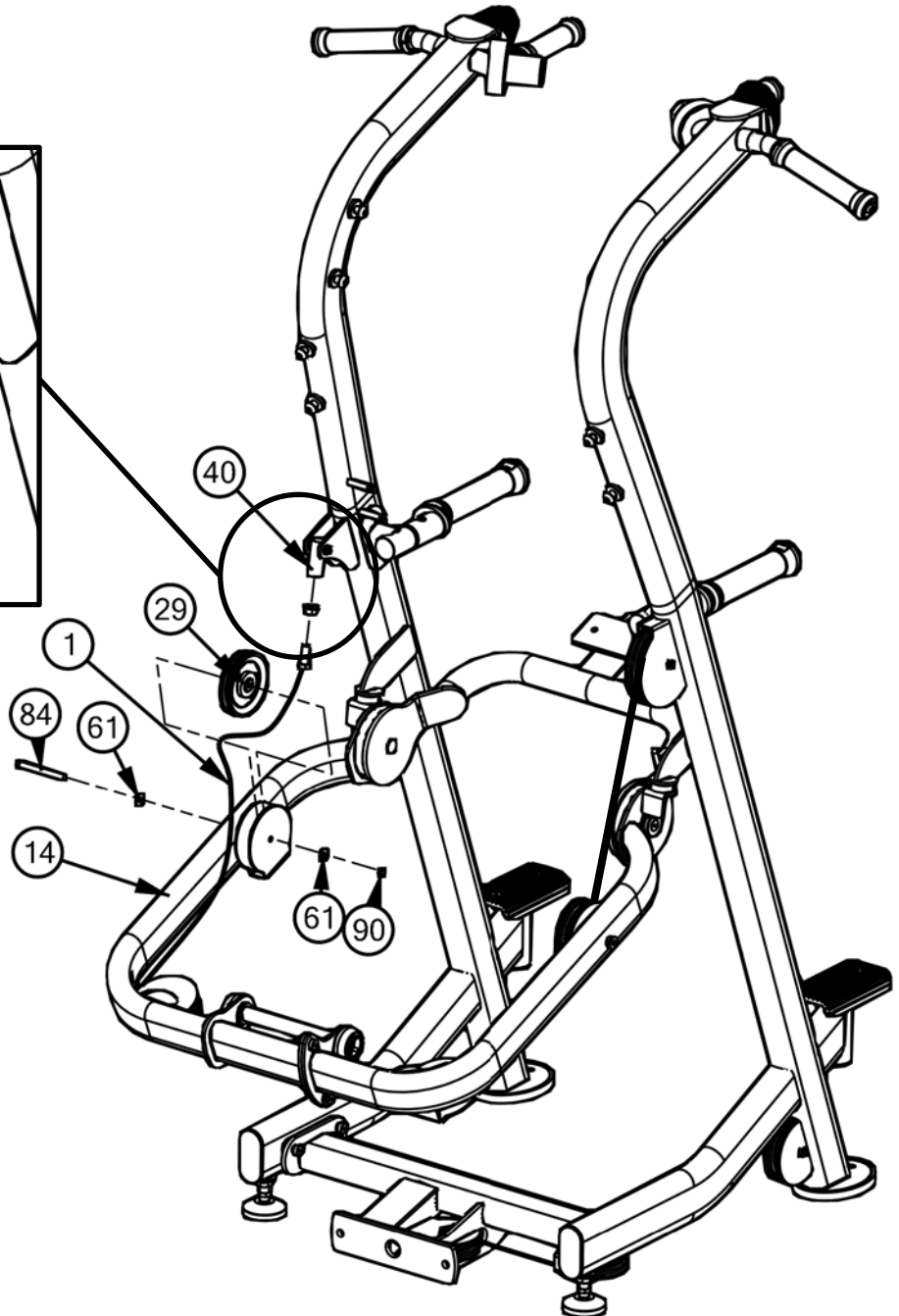
FRAME ASSEMBLY

NOTE:

- WRENCH TIGHTEN HARDWARE.
- INSTALL CABLES AND PULLEYS AT THE SAME TIME
- SOME PARTS MAY HAVE BEEN REMOVED FOR CLARITY



INSTALLED VIEW



FINE TUNING

LOOSEN JAM NUT AND
THREAD BOLT IN/OUT TO
GIVE THE CABLE PROPER
TENSION. RE-TIGHTEN JAM NUT.

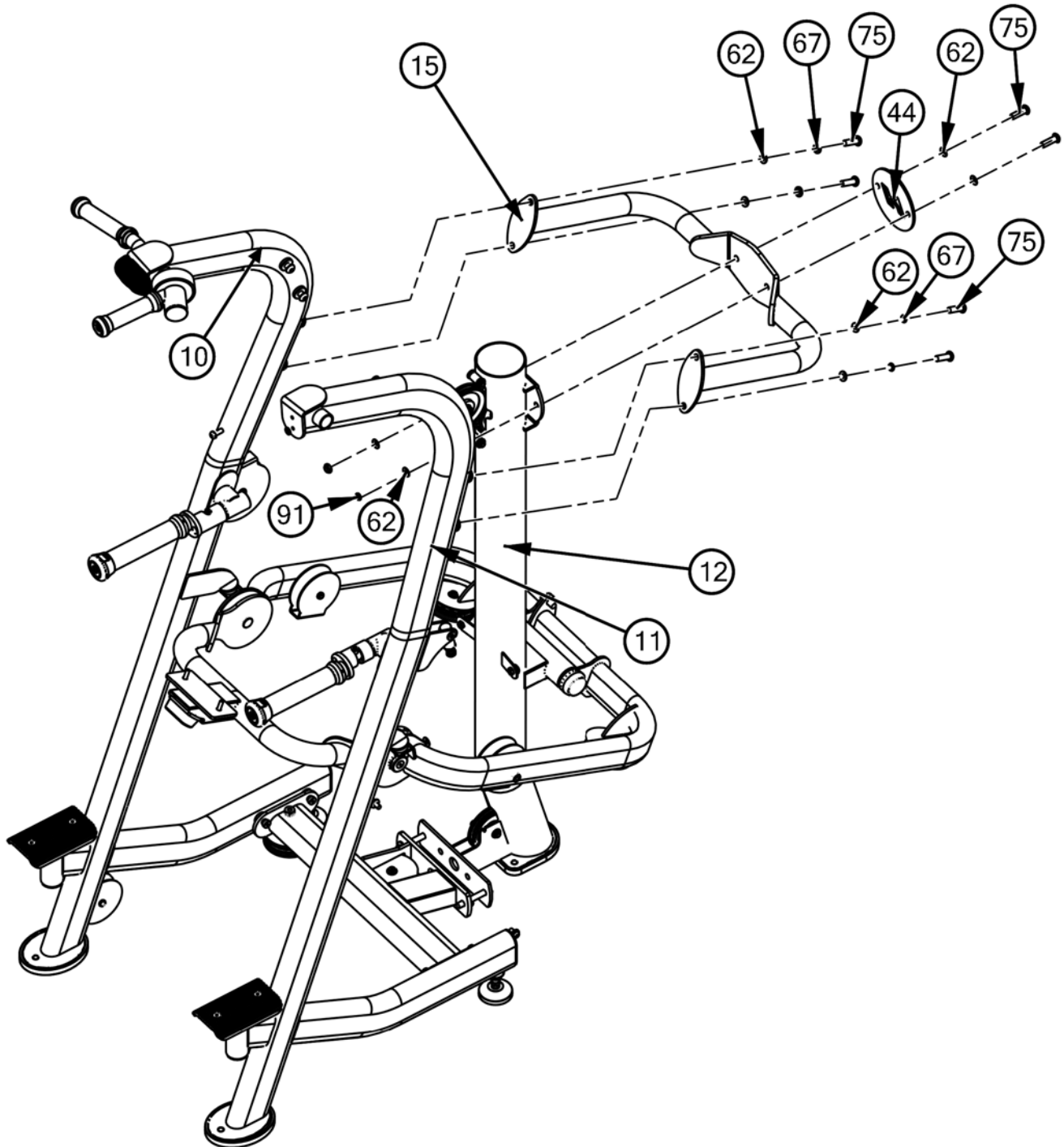
**WARNING – CABLE BOLT
MUST BE THREADED A MINIMUM
OF 3/8" WITH JAM NUT
TIGHTENED SECURELY TO ENSURE
PROPER CONNECTION**

OWNER'S MANUAL

FRAME ASSEMBLY

NOTE:

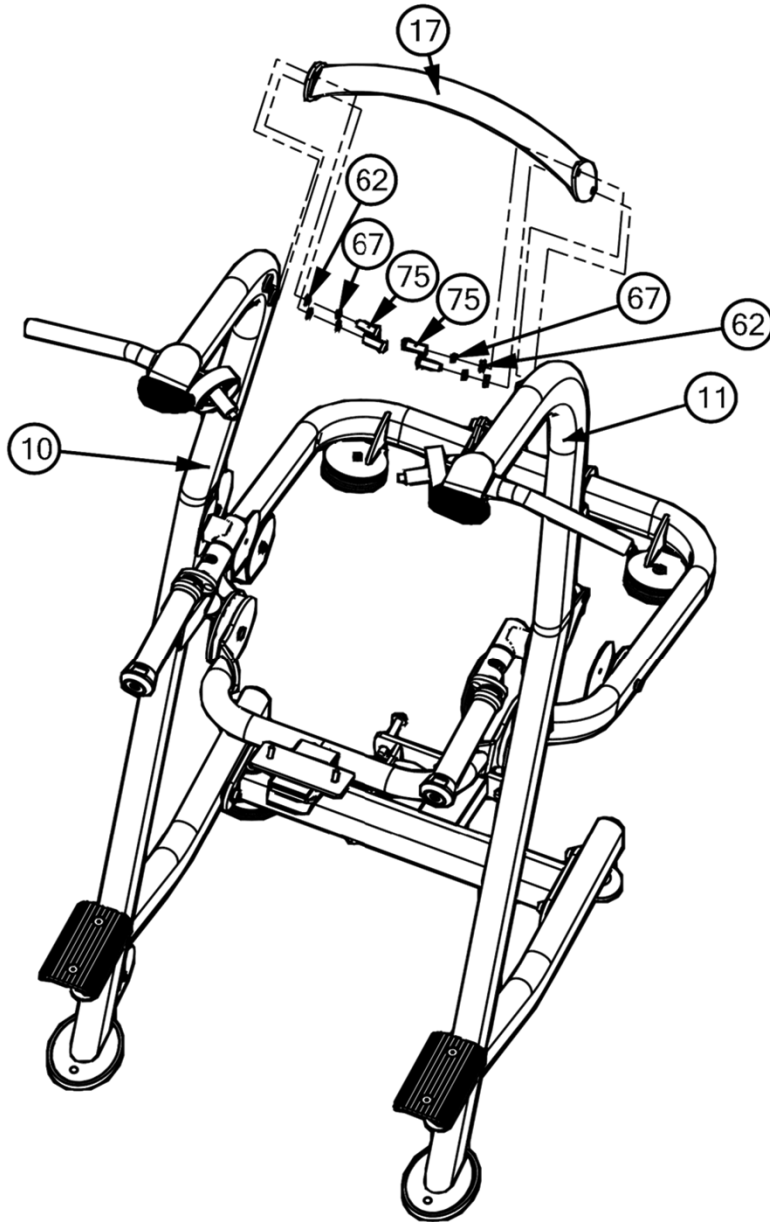
- HAND TIGHTEN HARDWARE.
- SOME PARTS MAY HAVE BEEN REMOVED FOR CLARITY.



FRAME ASSEMBLY

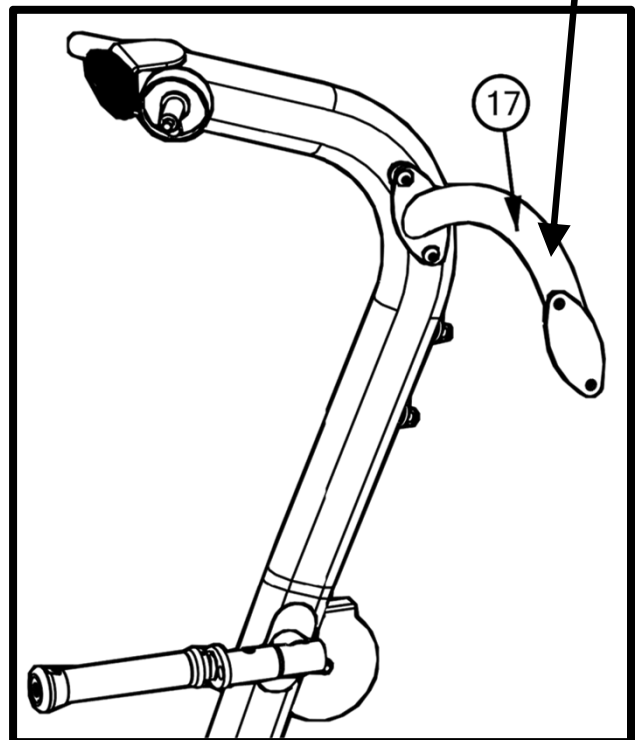
NOTE:

- WRENCH TIGHTEN HARDWARE
- WRENCH TIGHTEN ALL PREVIOUSLY HAND TIGHTENED HARDWARE.
- SOME PARTS MAY HAVE BEEN REMOVED FOR CLARITY.



NOTE:

ENSURE THE UPPER CROSS BRACE (17) HAS THE CURVED AREA OF THE TUBE POINTING UPWARDS, AS SHOWN. THE CROSS BRACE CANNOT INSTALL PROPERLY IF THE CURVE OF THE TUBE IS POINTING DOWNWARDS.



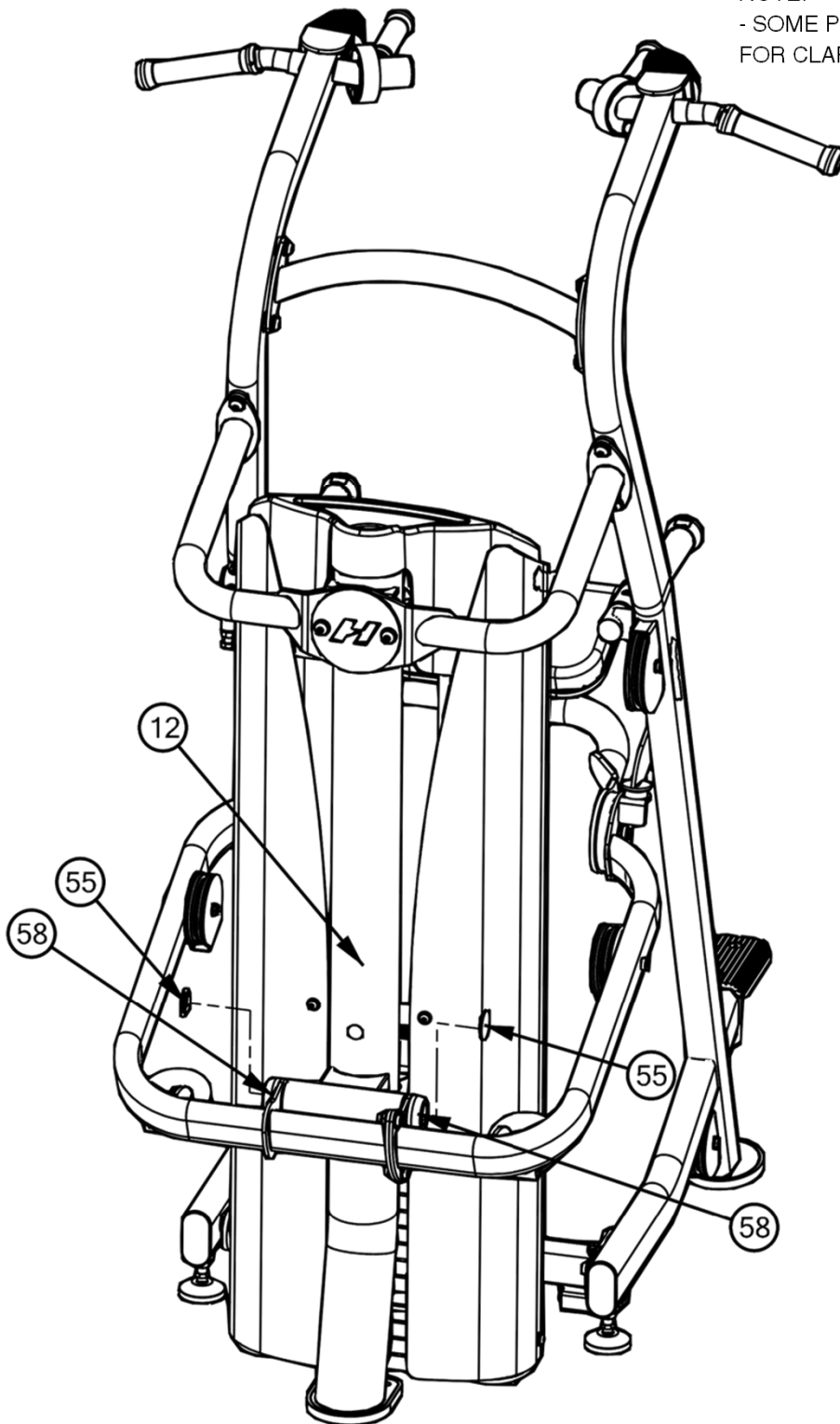
IMPORTANT

AT THIS STEP, TAKE TIME TO ASSURE THAT YOUR UNIT IS ASSEMBLED SQUARE AND PERPENDICULAR. IF NOT, IT WILL BE NECESSARY TO LOOSEN SOME FRAME HARDWARE TO RE-ALIGN THE FRAME AND RETIGHTEN BOLTS.

FRAME ASSEMBLY

NOTE:

- SOME PARTS MAY HAVE BEEN REMOVED FOR CLARITY.

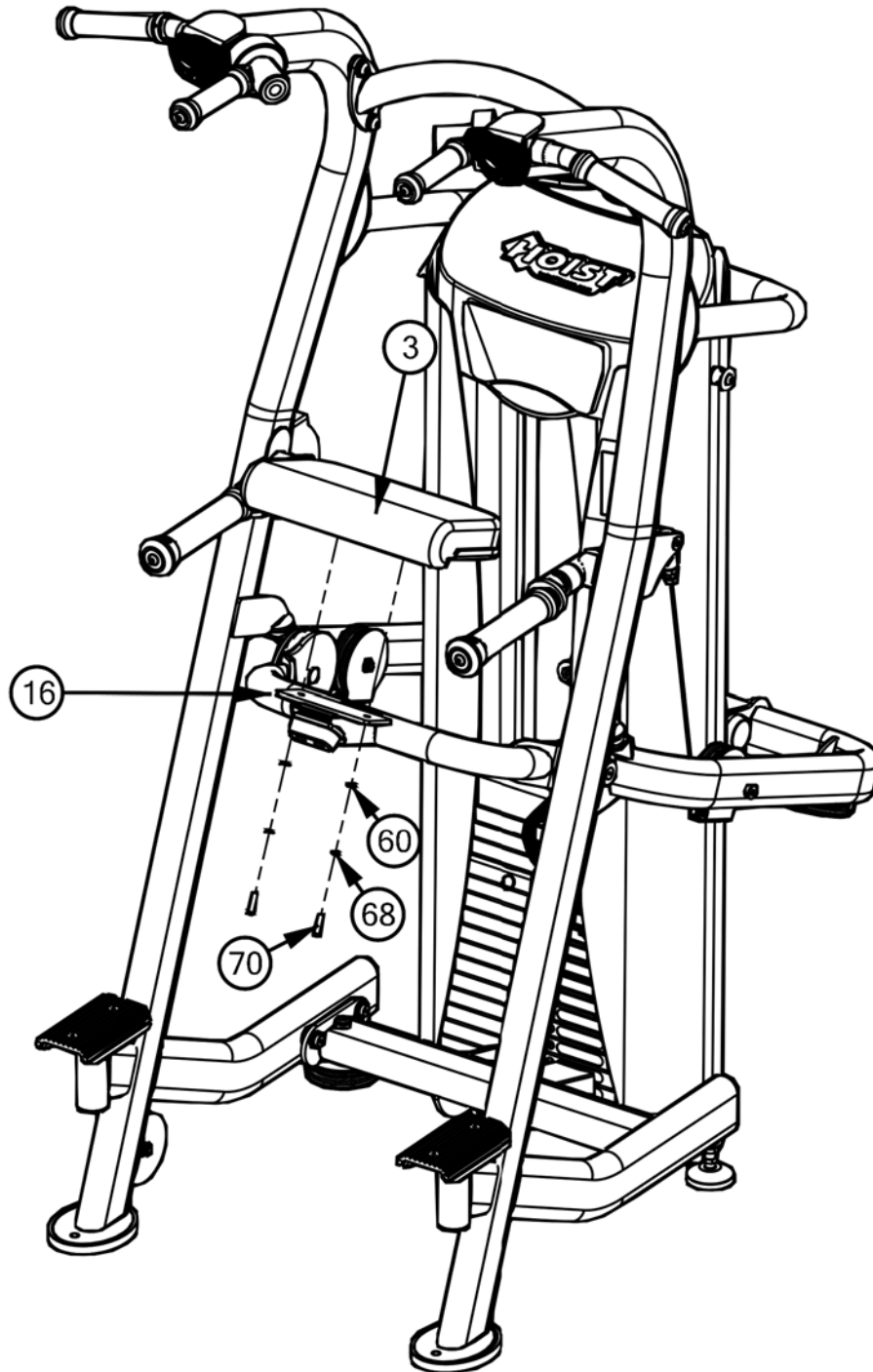


OWNER'S MANUAL

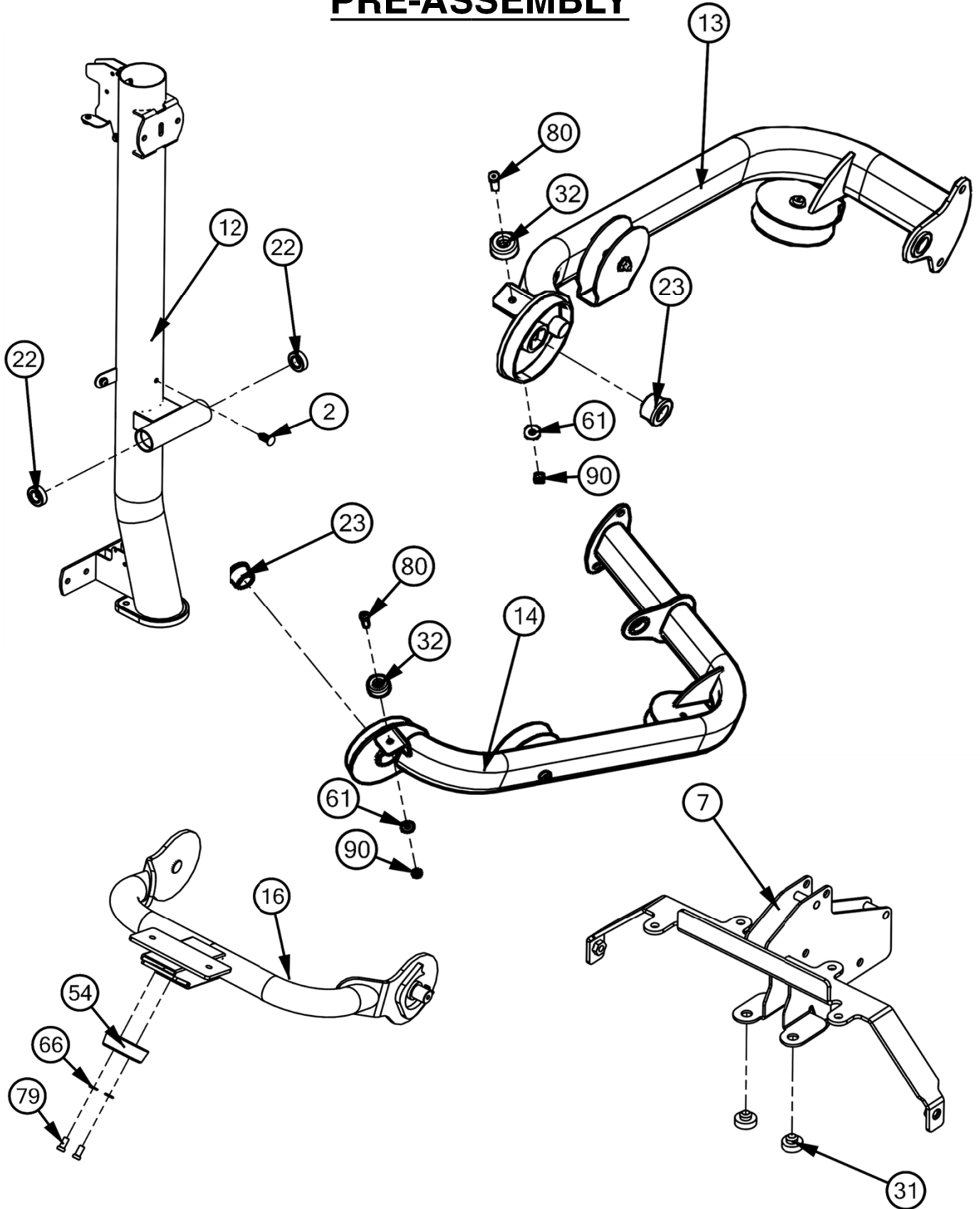
FRAME ASSEMBLY

NOTE:

- WRENCH TIGHTEN HARDWARE
- SOME PARTS MAY HAVE BEEN REMOVED FOR CLARITY.

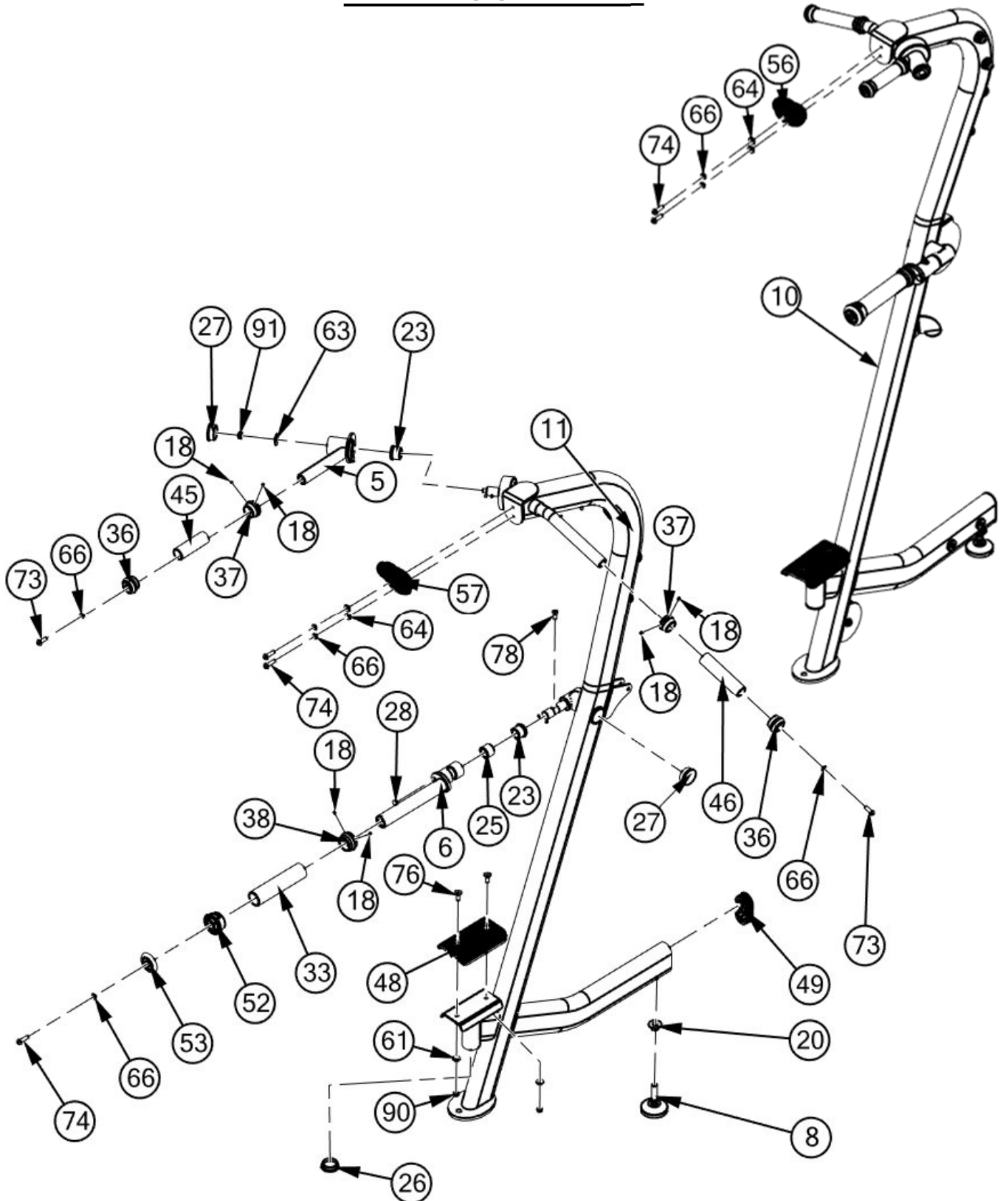


PRE-ASSEMBLY



OWNER'S MANUAL

PRE-ASSEMBLY

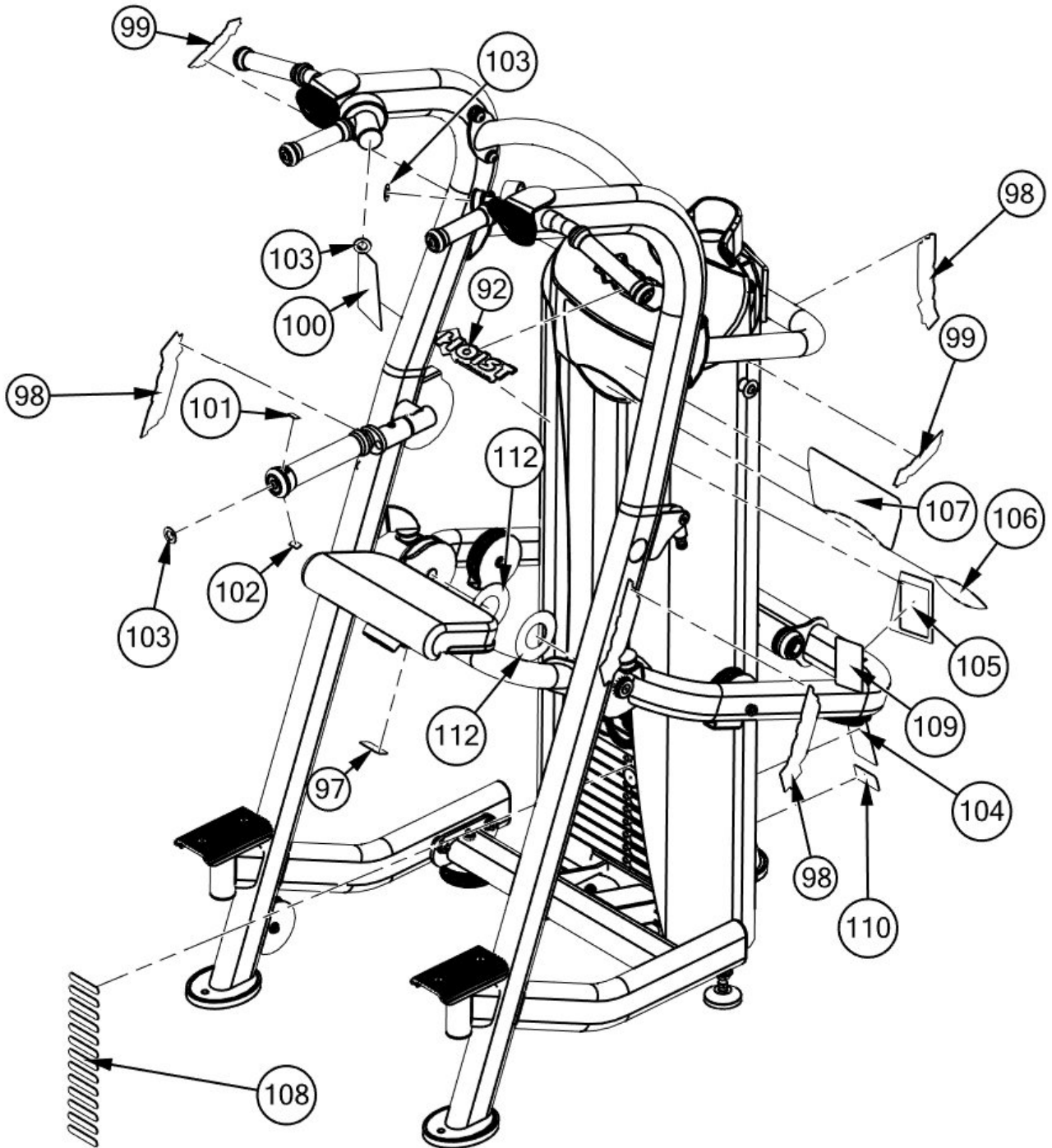


OWNER'S MANUAL

DECAL PLACEMENT

NOTE:

- SOME PARTS MAY HAVE BEEN REMOVED FOR CLARITY.



OWNER'S MANUAL

DECAL REFERENCE



021-0003093



021-0003417



021-0003427



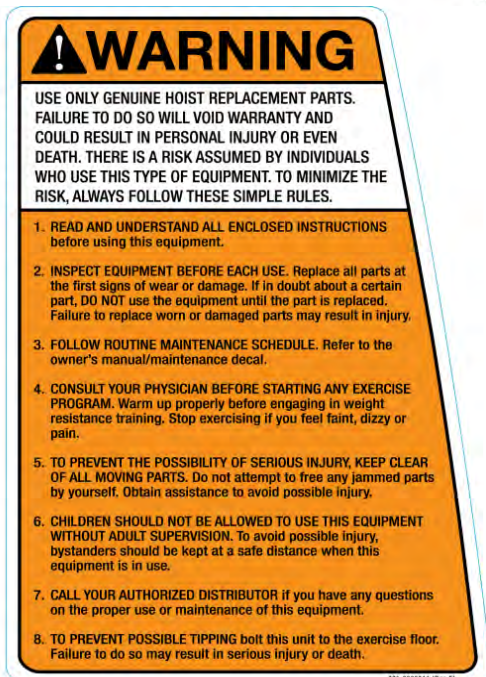
021-0003221



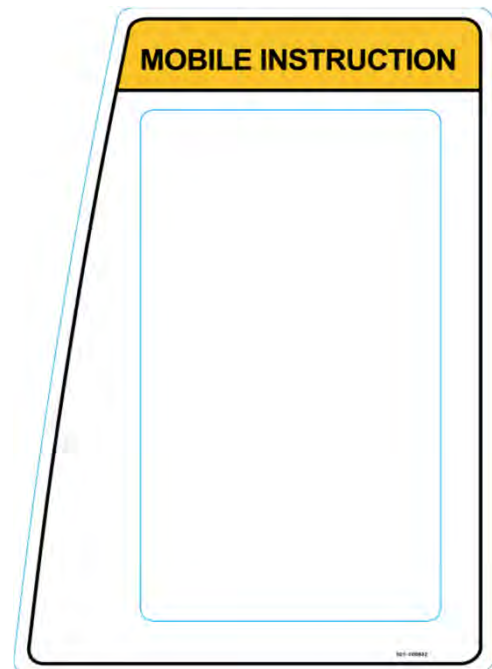
021-0003416



021-0003230



021-0003344



021-0003832

DECAL REFERENCE



SERIAL # DECAL

TO VISIT THE HOIST® MOBILE APPLICATION, SCAN THE QR CODE* BELOW WITH YOUR SMARTPHONE'S CAMERA.

THE APPLICATION PROVIDES A SHORT VIDEO, ALONG WITH ANSWERS TO:

- HOW DO I ADJUST THIS MACHINE?
- HOW DO I PERFORM THE EXERCISE?
- WHERE IS HOIST ON THE WEB?

SCAN HERE:

* USING YOUR SMARTPHONE, VISIT WWW.HOISTFITNESS.COM/SCAN TO DOWNLOAD A FREE QR CODE SCANNER.

021-003915

021-0003915

COMMERCIAL MAINTENANCE	Daily	Weekly	Monthly	6 Months	Yearly
	Inspect; Links, Pull Pins, Snap Locks, Swivels, Weight Stack Pins	X			
Clean; Upholstery	X				
Inspect; Cables or Belts and their tension	X				
Inspect; Accessory Bars and Handles		X			
Inspect; All Decals		X			
Inspect; All Nuts and Bolts, Tighten if Needed		X			
Inspect; Anti- Skid Surfaces		X			
Clean & Lubricate; Guide Rods with a Teflon (PTFE) based lubricant (Superlube)			X		
Lubricate; Seat Sleeves, Turcite Bushings, Linear Bearings			X		
Clean and Wax; All Glossy Finishes				X	
Repack with Grease; Linear Bearings				X	
Replace; Cables, Belts and Connecting Parts					X

NOTICE

021-0003573 (Rev.A)

021-0003573



021-0003914

DECAL REFERENCE

CHIN-UP ASSIST

MAIN MUSCLES: LATS / BICEPS

- 1 Select weight and grasp uppermost handles prior to positioning onto the knee pad.
- 2 Knee pad is designed to move so keep knees on the pad and hands on the handles at all times.
- 3 Only enter or exit the machine from the start position.
- 4 Lift torso until chin is level with the handles.



CHIN/PULL-UP
FOLD PAD UP FOR UNASSISTED EXERCISE

DUALSERIES™

HD-3700

Dual Position Hand Grips



CHIN-UP POSITION



PULL-UP POSITION



KNEELING DIP
FOLD PAD UP FOR UNASSISTED EXERCISE

DIP ASSIST

MAIN MUSCLES: TRICEPS / CHEST

- 1 Select weight and grasp middle handles prior to positioning onto the knee pad.
- 2 Knee pad is designed to move so keep knees on the pad and hands on the handles at all times.
- 3 Only enter or exit the machine from the start position.
- 4 Starting from a 90° angle, push up to full extension.

021-0003947

30 LBS / 14 KGS

150 LBS / 68 KGS

45 LBS / 20 KGS

165 LBS / 75 KGS

60 LBS / 27 KGS

180 LBS / 82 KGS

75 LBS / 34 KGS

195 LBS / 89 KGS

90 LBS / 41 KGS

210 LBS / 95 KGS

105 LBS / 48 KGS

021-0003905

120 LBS / 54 KGS

135 LBS / 61 KGS



021-0003959



021-0018022

OWNER'S MANUAL

PART LIST

NOTE: SOME OF THESE PARTS MAY COME PRE-INSTALLED

ITEM NO.	PART NUMBER	DESCRIPTION	QTY.
1	010-01C0437	CABLE ASSEMBLY HD-3700 - 201 7/16" LG.	1
2	026-01PL2200	PINETREE PLUG	1
3	022-01PD2127-A	PAD ASSEMBLY	1
4	026-01X2378	BOTTOM GUIDE ROD MOUNT	1
5	026-01X3728	45 DEG. SWIVEL HANDLE ASSEMBLY	2
6	026-01X3823	HANDLE ASSEMBLY	2
7	026-01X3865	TOP GUIDE ROD MOUNT	1
8	026-01X5186	LEVELING FOOT (M16X2.0)	2
9	026-01X6644	BASE FRAME	1
10	026-01X6647	LEFT UPRIGHT	1
11	026-01X6648	RIGHT UPRIGHT	1
12	026-01X6649	BACK BONE ASSEMBLY	1
13	026-01X6650	LIFT FRAME LEFT	1
14	026-01X6651	LIFT FRAME RIGHT	1
15	026-01X6653	WEIGHT CAGE BRACE	1
16	026-01X6654	PAD MOUNT	1
17	026-01X6669	UPPER CROSS BRACE	1
18	011-0711001	SET SCREW: 1/4"-28 X .25" LG. (Ni)	12
19	011-0112023	.473" X .281" SHSS (Ni) W/ DRI-LOC PATCH	2
20	012-0103001	16M X 2.0 FLANGED NUT (WZ)	2
21	013-0702001	NYLON WASHER .38" I.D. X 1.00" O.D. X .06" THK	1
22	014-0012014	BEARING: FLANGELESS - 25mm I.D.	2
23	014-0101005	BUSHING: OILITE FLANGED Ø1.38" O.D. X Ø1.00" I.D. X .81" LG.	6
24	014-0101020	BUSHING: OILITE FLANGED Ø.63" O.D. X Ø.38" I.D. X .50" LG.	2
25	014-0104002	BEARING: SLEEVE, BRONZE 1.00 I.D. X 1.38 O.D. X 1.00" LG.	2
26	016-0101017	END CAP Ø2.00" X .120" WALL (GRAY)	2
27	016-0201022	END CAP Ø2.00" (BLACK)	4
28	016-0203005-G	1/2" PLUG	2
29	018-0001003	CABLE PULLEY: Ø4.50"	10
30	018-0002017	PULLEY 6.00" OD	1
31	019-0001001	PLUG BUMPER	2
32	019-0001003	BUMPER Ø1.50" X .625" T	2
33	019-0002048	OPEN END GRIP Ø1.50" X 7.25" LG.	2
34	026-01G0224	GUIDE ROD Ø.750" X 57.078" LG.	2
35	026-01M0239	ALUMINUM FLATHEAD CAP Ø1.63" X .31" LG.	2

OWNER'S MANUAL

PART LIST CONTINUED

NOTE: SOME OF THESE PARTS MAY COME PRE-INSTALLED

ITEM NO.	PART NUMBER	DESCRIPTION	QTY.
36	026-01M0932	ALUMINIUM CAP: Ø1.25" ID	4
37	026-01M0933	ALUMINUM RING: Ø1.25" ID	4
38	026-01M0935	ALUMINIUM RING: Ø1.50" I.D.	2
39	026-01M1013	Ø1.50" TOWEL HANGER	1
40	026-01M1103	THREADED CABLE ANCHOR Ø1.00" O.D X 2.50" LG.	1
41	026-01M2663	PIVOT SHAFT	1
42	011-0712002	3/8" X 1.50" SHSS (Ni)	1
43	026-01M3112	FINISHED CAP WASHER	2
44	026-01P2653	'H' PLATE	1
45	026-01PL0235-12	GRIP OPEN END Ø1.43" X 4.25" LG.	2
46	026-01PL0235-18	GRIP: OPEN ENDED Ø1.25" X 6.00" LG.	2
47	026-01PL2131	D-SHAPED RUBBER FOOT	1
48	026-01PL2303	FOOT PLATE PLASTIC 7.00" X 4.37"	2
49	026-01PL2566	CAP 1.97" X 3.94"	2
50	026-01PL2122	OVAL-SHAPED RUBBER FOOT	4
51	026-01PL2127	TOP CAP	1
52	026-01PL2158	PLASTIC KNOB: Ø1.50" - BASE	2
53	026-01PL2159	PLASTIC KNOB: Ø1.50" - CAP	2
54	026-01PL2291	RUBBER STOP	1
55	026-01PL2371	3.75" ROLLER PAD END CAP	2
56	026-01PL2444	ROCK CLIMBING HOLD (LEFT)	1
57	026-01PL2445	ROCK CLIMBING HOLD (RIGHT)	1
58	026-01PL2553	FINISH CAP BODY, Ø2.3750"	2
59	013-1002008	1/4" X 16mm SAE FLAT WASHER (Ni)	4
60	013-1002010	5/16" SAE FLAT WASHER (Ni)	3
61	013-1002007	3/8" X 22mm FLAT WASHER (Ni)	44
62	013-1002006	1/2" X 27mm SAE FLAT WASHER (Ni)	24
63	013-1002004	1/2" X 34mm USS FLAT WASHER (Ni)	2
64	013-0402010	3/8" X 22mm FLAT WASHER (SS)	4
65	013-1006001	1/4" SPLIT LOCK WASHER (Ni)	4
66	013-1006003	3/8" SPLIT LOCK WASHER (Ni)	22
67	013-1006004	1/2" SPLIT LOCK WASHER (Ni)	12
68	013-1010003	5/16" INTERNAL LOCK WASHER (Ni)	2
69	011-0701082	1/4"-20UNC X.75" BHCS (Ni) w/ NYLON PATCH	4
70	011-0701004	5/16"-18UNC X 1.25" BHCS (Ni)	2

OWNER'S MANUAL

PART LIST CONTINUED

NOTE: SOME OF THESE PARTS MAY COME PRE-INSTALLED

ITEM NO.	PART NUMBER	DESCRIPTION	QTY.
71	011-0701089	3/8"-16UNC X .75" BHCS (Ni) W/ DRI-LOC PATCH	5
72	011-0701090	3/8"-16UNC X 1.75" BHCS (Ni) W/ DRI-LOC PATCH	1
73	011-0701020	3/8"-16UNC X 1.00" BHCS (Ni)	4
74	011-0701021	3/8"-16UNC X 1.25" BHCS (Ni)	6
75	011-0701049	1/2"-13UNC X 1.50" BHCS (Ni)	10
76	011-0702003	3/8"-16UNC X 1.00" FHCS (Ni)	4
77	011-0702020	3/8"-16UNC X 1.00" FHCS (Ni) W/NYLON PATCH	2
78	011-0701085	3/8"-16UNC X .75 SHCS (Ni)	2
79	011-0116141	3/8"-16UNC X .75" LOW HEAD SHCS (Ni)	2
80	011-0116142	3/8"-16UNC X 1.00" LOW HEAD SHCS (Ni)	4
81	011-0116143	3/8"-16UNC X 1.25" LOW HEAD SHCS (Ni)	2
82	011-0116145	3/8"-16UNC X 1.75" LOW HEAD SHCS (Ni)	9
83	011-0116146	3/8"-16UNC X 2.00" LOW HEAD SHCS (Ni)	1
84	011-0116153	3/8"-16UNC X 3.75" LOW HEAD SHCS (Ni)	2
85	011-0116154	3/8"-16UNC X 4.00" LOW HEAD SHCS (Ni)	1
86	011-0116156	3/8"-16UNC X 4.50" LOW HEAD SHCS (Ni)	1
87	011-0116108	1/2"-13UNC X 1.25" LOW HEAD SHCS (Ni)	6
88	011-0116116	1/2"-13UNC X 3.25" LOW HEAD SHCS (Ni)	2
89	012-0504006	5/16"-18UNC THIN NYLOCK NUT (Ni)	1
90	012-0504005	3/8"-16 UNC THIN NYLOCK NUT (Ni)	20
91	012-0504002	1/2"-13 UNC THIN NYLOCK NUT (Ni)	8
92	021-0018022	HOIST EMBLEM + 2 SIDED TAPE	1
93	019-0001006	THICK RUBBER DONUT ϕ 3.00" X .50" BLACK	2
94	026-01P4532	SHIELD - LEFT	1
95	026-01P4533	SHIELD - RIGHT	1
96	026-01PL2201	PLASTIC SLEEVE ϕ .75" O.D.	2
97	021-0003093	DECAL MOVING PARTS 1.20" X 2.38" (HOR)	1
98	021-0003221	DECAL HOIST 2.50" X 9.13"	3
99	021-0003230	DECAL HOIST 1.625" X 6.0613"	2
100	021-0003344	ROC-IT WARNING DECAL	1

OWNER'S MANUAL

PART LIST CONTINUED

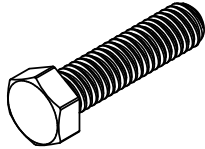
NOTE: SOME OF THESE PARTS MAY COME PRE-INSTALLED

ITEM NO.	PART NUMBER	DESCRIPTION	QTY.
101	021-0003416	DECAL WIDE	2
102	021-0003417	DECAL NARROW	2
103	021-0003427	DECAL ADJUST	4
104	021-0003573	COMMERCIAL MAINTENANCE DECAL	1
105	021-0003832	MOBILE INSTRUCTION DECAL	1
106	021-0003914	DUAL SERIES EYEBALL DECAL	1
107	021-0003947	PLACARD HD-3700 DIP / CHIN ASSIST	1
108	021-0003905	DECAL WEIGHT STACK #21 (30-210 Lbs.)	1
109	021-0003915	HD QR DECAL	1
110	SERIAL # DECAL	DECAL SERIAL # 1.63" X 2.63"	1
111	WS#21	WEIGHT STACK #21	1
112	021-0003959	Assist-Unassist Decal	1

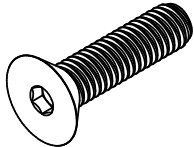
OWNER'S MANUAL

ABBREVIATIONS

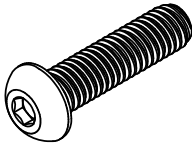
BZ = Black Zinc
Ni = Nickel Plated
SS = Stainless Steel
WZ = White Zinc



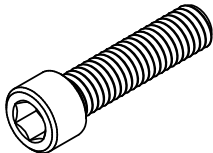
HHB = Hex Head Bolt



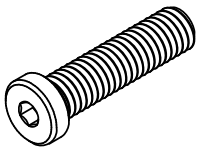
FHCS = Flat Head Cap Screw



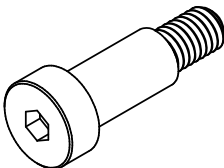
BHCS = Button Head Cap Screw



SHCS = Socket Head Cap Screw



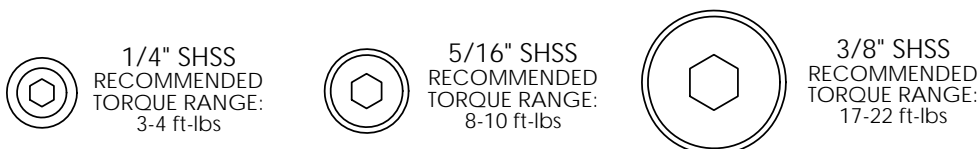
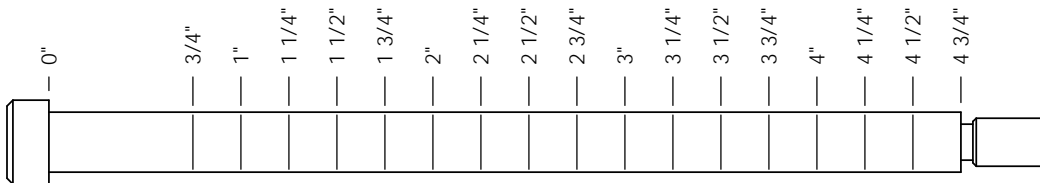
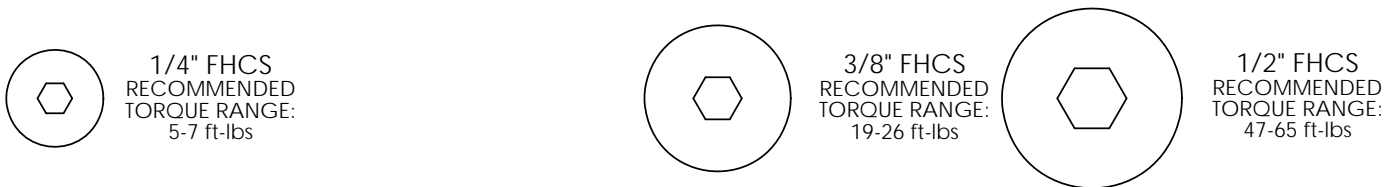
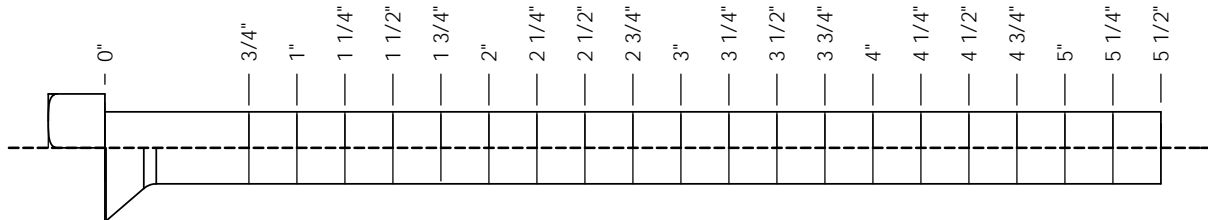
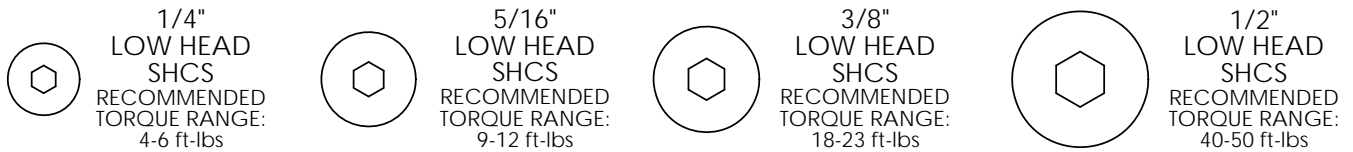
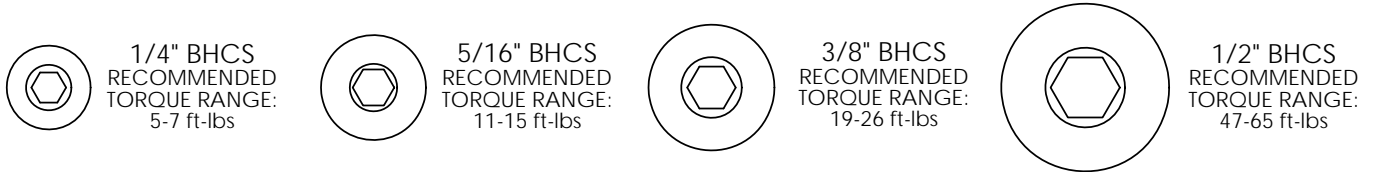
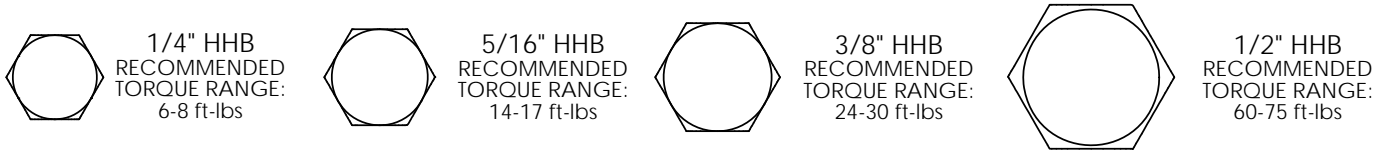
Low Head SHCS = Low Head Socket
Head Cap Screw



SHSS = Socket Head Shoulder Screw

OWNER'S MANUAL

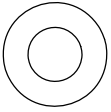
BOLT SIZING CHART



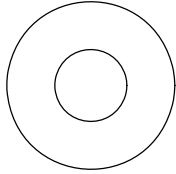
OWNER'S MANUAL

WASHER SIZING CHART

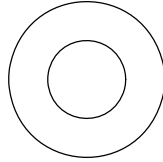
013-0002003
1/4"
FLAT WASHER
SMALL, SAE, 13mm



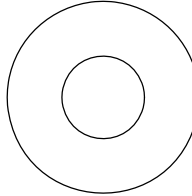
013-0102004
5/16"
FLAT WASHER
LARGE, USS, 22mm



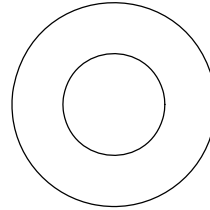
013-0002004
3/8"
FLAT WASHER
SMALL, SAE, 21mm



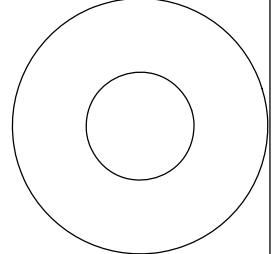
013-0402005
3/8"
FLAT WASHER
LARGE, USS, 25mm



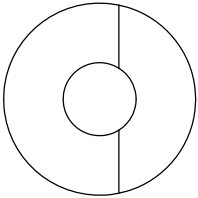
013-0102003
1/2"
FLAT WASHER
SMALL, SAE, 27mm



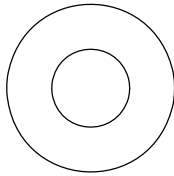
013-0102026
1/2"
FLAT WASHER
LARGE, USS, 34mm



013-0102028
3/8"
CURVED WASHER



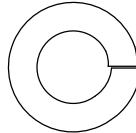
013-0402007
3/8"
FLAT WASHER
22mm O.D.



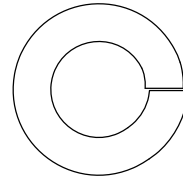
013-0102019
1/4"
LOCK WASHER



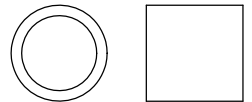
013-0102020
3/8"
LOCK WASHER



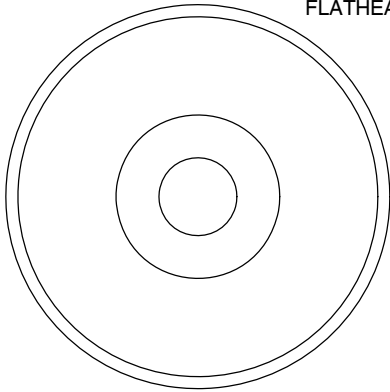
013-0102018
1/2"
LOCK WASHER



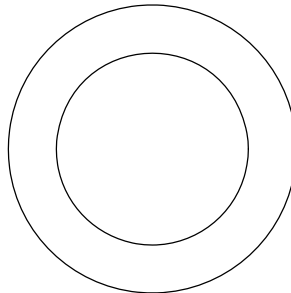
014-0018001
1/2" LONG
SPACER



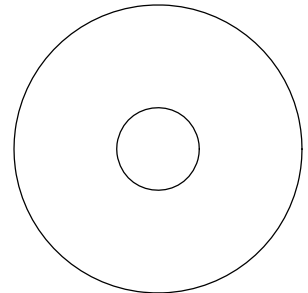
026-01M0238
2" ALUMINUM
FLATHEAD CAP



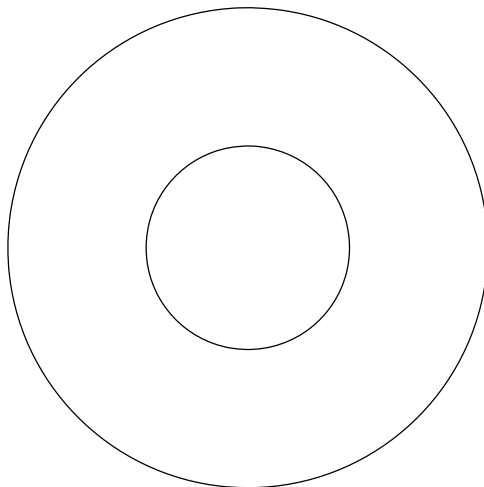
016-0009003
1" SHIM WASHER



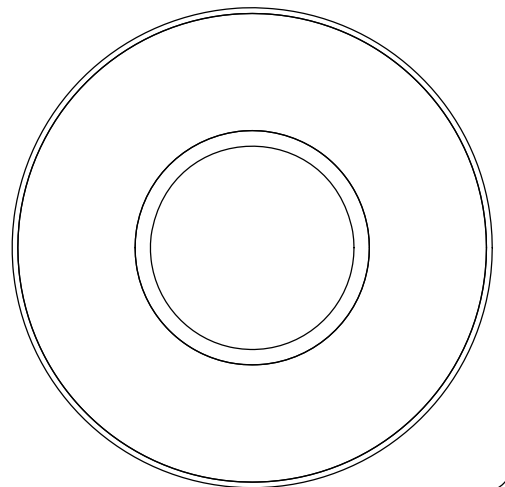
013-0003002
3/8" FENDER WASHER



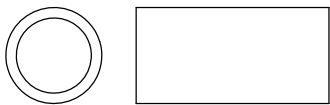
013-0003004
1 1/16"
FENDER WASHER



026-01PL151
PLASTIC 1 1/16"
FENDER WASHER



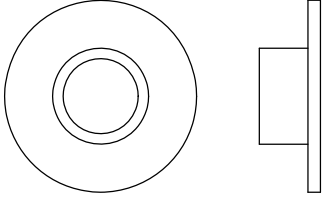
014-0018002
1" LONG
SPACER



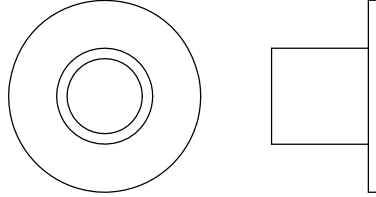
OWNER'S MANUAL

WASHER SIZING CHART (CONTINUED)

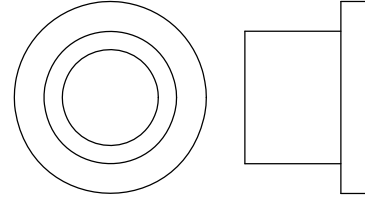
026-01M0211
1/4" LONG
FLANGED SPACER



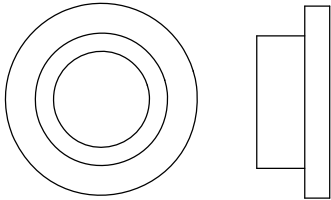
026-01M0198
1/2" LONG
FLANGED SPACER



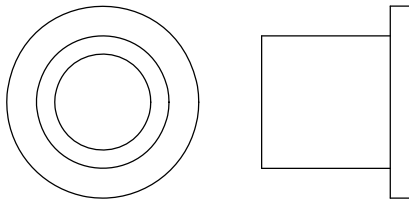
026-01M0760
1/2" LONG HEAVY
FLANGED SPACER



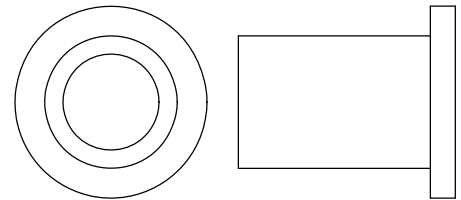
026-01M211T
1/4" LONG HEAVY
FLANGED SPACER



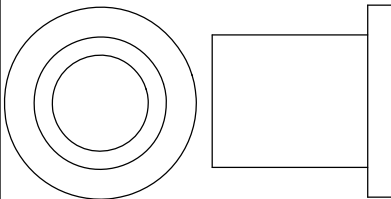
026-01M0532
11/16" LONG HEAVY
FLANGED SPACER



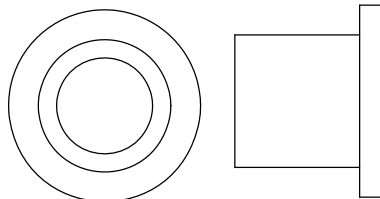
026-01M0551
1" LONG HEAVY
FLANGED SPACER



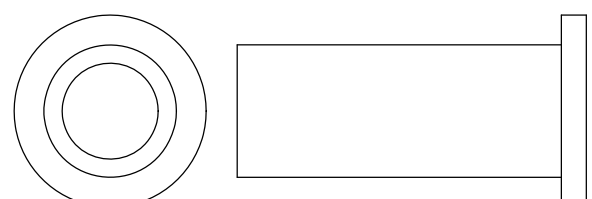
026-01M0788
.81" LONG HEAVY
FLANGED SPACER



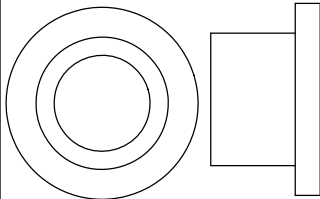
026-01M0780
.65" LONG HEAVY
FLANGED SPACER



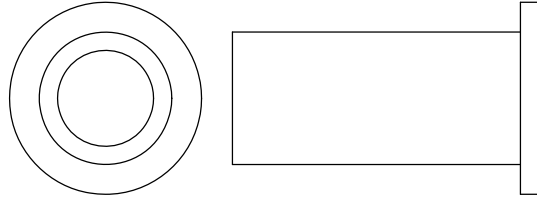
026-01M0761
1 11/16" LONG HEAVY
FLANGED SPACER



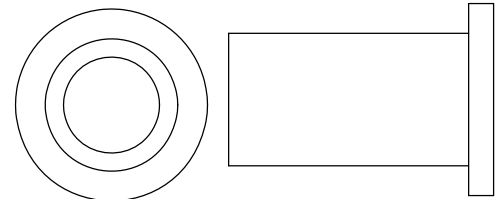
026-01M0789
.44" LONG HEAVY
FLANGED SPACER



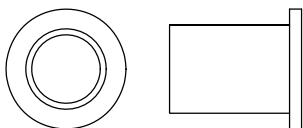
026-01M0762
1 1/2" LONG HEAVY
FLANGED SPACER



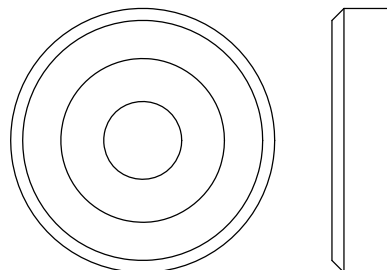
026-01M0768
1 1/4" LONG HEAVY
FLANGED SPACER



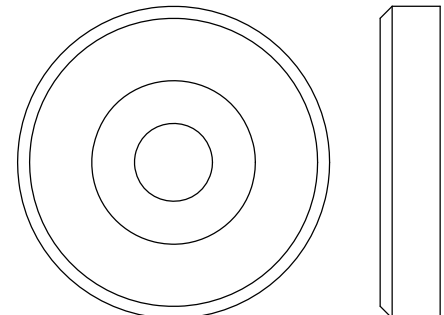
026-01M0600
.625" LONG
FLANGED SPACER



026-01M0240
1 3/8" ALUMINUM
FLATHEAD CAP



026-01M0239
1 5/8" ALUMINUM
FLATHEAD CAP



OWNER'S MANUAL

MAINTENANCE SCHEDULE

ROUTINE	COMMERCIAL / LIGHT COMMERCIAL MAINTENANCE	HOME MAINTENANCE	LATEST DATE ENTRY																	
Inspect; Links, Pull Pins, Snap Locks, Swivels, Weight Stack Pins	DAILY	WEEKLY																		
Clean; Upholstery	DAILY	WEEKLY																		
Inspect; Cables or Belts and their tension	DAILY	WEEKLY																		
Inspect; Accessory Bars, and Handles	WEEKLY	3 MONTHS																		
Inspect; All Decals	WEEKLY	3 MONTHS																		
Inspect; All Nuts and Bolts, Tighten if needed	WEEKLY	3 MONTHS																		
Inspect; Anti-Skid Surface	WEEKLY	3 MONTHS																		
Clean & Lubricate; Guide Rods with a Teflon (PTFE) based lubricant (Superlube)	MONTHLY	3 MONTHS																		
Lubricate; Seat Sleeves, Turcite Bushings, Linear Bearing	MONTHLY	3 MONTHS																		
Clean and Wax; All Glossy Finishes	6 MONTHS	YEARLY																		
Repack with Grease; Linear Bearings	6 MONTHS	YEARLY																		
Replace; Cables, Belts and Connecting Parts	YEARLY	3 YEARS																		

*Your equipment comes with a commercial maintenance decal.
For personal, in home use, please follow the home maintenance schedule listed above.*

Never use ammonia, acid-based, or petroleum-based solvents on any portion of the machine as it may damage the finish.

OWNER'S MANUAL

HOIST FITNESS SYSTEMS **GENERAL MAINTENANCE INFORMATION**

Links, Pull-Pins, Snap Hooks, Swivels, Weight Stack Pins:

- *Check all pieces for signs of visible wear or damage.
- *Check springs in snap hooks and pull-pins for proper tension and alignment.
- *If the spring sticks or has lost its rigidity, replace it immediately.

Upholstery:

- *To ensure prolonged upholstery life and proper hygiene, all upholstered pads should be wiped down with a damp cloth after every workout.
- *Periodically take the time to use a mild soap or an approved vinyl upholstery cleaner to deter the onset of cracking or drying. Avoid using any abrasive cleaners or cleaners not intended for use on vinyl.
- *Replace ripped or worn upholstery immediately.
- *Keep sharp or pointed objects clear of all upholstery.

Decals:

- *Inspect and familiarize yourself with any safety warnings or other user information posted on each decal.

Nuts and Bolts:

- *Inspect all nuts and bolts for any loosening and tighten if needed.
- *Go through a re-tightening sequence periodically to ensure that all hardware is tensioned proper.

Anti-Skid Surfaces:

- *These surfaces are designed to supply secure footing and need to be replaced if they appear worn or become slippery.

Belts and Cables:

- *Hoist uses only high quality belt, and mil-spec cables.
- *Visually inspect the belts and cables for fraying, cracking, peeling or discoloration.
- *While the machine is not in use, carefully run your fingers along the belt or cable to feel for thinning or bulging areas.
- *Replace belts and cables immediately at the first signs of damage or wear. Do not use equipment until belts or cables have been replaced.

Belt and Cable Tension:

- *Referring to the Owners Manual, when belts or cables are used check all bolts attachments to be sure they are properly attached.
- *Check slack in cables and re-adjust cable tension if needed.

Seat Sleeves, Guide Rods:

- *Wipe down adjusting tubes with a dust free rag before applying lubricant.
- *Lubricate seat sleeves and Guide Rods with a Silicon or Teflon based lubricant spray.

Linear Bearings:

- *Referring to the Owners Manual carefully disassemble the bearing from its housing and place a finger full of light grease (lithium, super lube, etc.) into the inside of the bearing. Using your finger, press the grease into the ball-bearings and their tracks. repeat until the ball-bearing tracks are full of grease. Insert the shaft back into the bearing and wipe off excess grease.

PLEASE KEEP THIS FOR YOUR RECORDS

OWNER'S MANUAL

WEIGHT TRAINING TIPS

Use this manual to guide you through the basic exercises you can perform on your HD-3700 HOIST® Fitness System. To gain maximum results and avoid possible injury, consult a fitness professional to develop your complete exercise program.

Always consult your physician before starting any exercise program.

To be successful in your exercise program, it is important to develop an understanding of the basic principles of strength training. Now that you have your HD-3700 HOIST® Fitness System, it is only natural that you want to get started immediately. First, determine a set of realistic goals and objectives for yourself. By deciding on an exercise plan that is right for you prior to starting, you will contribute significantly to your success.

Warm up properly before engaging in weight resistance training. Stretching, yoga, jogging, calisthenics or other cardiovascular exercise can help prepare your body for the heavier workload of lifting weights.

Learn how to perform the exercise correctly before using heavy weight. Correct form is important to avoid injury and to ensure that you work the proper muscle groups.

Know your limitations. If you are new to weight training or are embarking on an exercise regimen after a long layoff, start slowly and build foundational strength over a longer period of time.

Pay attention to your breathing. Exhale when you exert is a general rule of thumb. Never hold your breath.

Enjoy your HD-3700 HOIST® Fitness System!

OWNER'S MANUAL

HOIST FITNESS SYSTEMS **LIMITED LIFETIME WARRANTY**

Hoist Fitness Systems warrants this product to the **original purchaser** to be free from defects in workmanship and/or materials under normal use or service. If at any time a component part is defective, Hoist Fitness Systems shall repair or replace it (at Hoist Fitness Systems option) within a reasonable period of time. This warranty does not cover costs of removal, transportation or reinstallation. This warranty shall not apply if the defect was caused by misuse, neglect or normal wear and tear.

WARRANTY CLAIMS. All claims require: Model number, Serial number, Date of installation, and any information supporting the existence of the alleged defect.

To complete Warranty Registration visit:
www.HOISTFITNESS.com
and click on the Warranty Registration link

Starting from the original date of purchase, normal wear and tear shall be considered as the following:

COMMERCIAL USE: All malfunctions of upholstery, grips, and coatings that occur up to one year; all malfunctions of belts, or cables up to one year; all malfunctions of pulleys, bearings, or bushings that occur up to three years. The frame and body components are warranted for ten years, with structural moving parts warranted for five years.

LIGHT COMMERCIAL USE: All malfunctions of upholstery, grips, and coatings that occur up to one year; all malfunctions of belts, or cables up to one year; all malfunctions of pulleys, bearings, or bushings that occur up to three years. The frame and body components are warranted for ten years, with structural moving parts warranted for five years.

HOME USE: All malfunctions of grips, paint, and chrome that occur up to ten years; all malfunctions of electronic components, belts, cables, or upholstery that occur up to ten years; all malfunctions of pulleys, bearings, or bushings that occur up to ten years. The frame and all welded components are warranted for the life of the product.

PLEASE NOTE THAT NOT ALL HOIST PRODUCTS ARE MADE FOR COMMERCIAL USE. Refer to the instructions page of your owners manual or consult with you fitness product dealer to establish if a product is made for commercial use or not. Using a non-commercial product in a commercial setting can result in serious injury or death! Hoist Fitness Systems sole responsibility shall be to repair or replace the component within the terms stated above. Hoist Fitness Systems shall not be liable for any loss or damage of any kind including any incidental or consequential damages resulting, directly or indirectly from any warranty expressed or implied or any other failure of this product.

LIGHT COMMERCIAL USE: Our Light Commercial warranty applies to facilities that **DO NOT** charge monthly membership dues and where the equipment would be used by **no more than 50** people per day. Examples of Light Commercial facilities include hotels, apartment complexes, personal training studios, fire stations, police stations, etc., that meet the criteria stated above.

WHAT IS NOT COVERED BY THIS WARRANTY: Hoist's sole obligation under this warranty is limited to either repair or replacement of parts, subject to the additions below. This warranty neither assumes nor authorizes any person to assume obligations other than expressly covered by this warranty.

NO CONSEQUENTIAL DAMAGES: Hoist is not responsible for economic loss; profit loss; or special, indirect, or consequential damages.

WARRANTY IS NOT TRANSFERABLE: This warranty is not assignable and applies only in favor of the original purchaser/user to whom delivered. Any such assignment or transfer shall void the warranties herein made and shall void all warranties, expressed, implied or statutory, except the one (1) and five (5) year warranties described above. These warranties are exclusive and in lieu of all other warranties, including implied warranty and merchantability or fitness for a particular purpose. There are no warranties which extend beyond the description on the face hereof.

TRANSPORTATION COSTS: Hoist will accept parts covered under this warranty freight collect, provided that shipment has received prior approval. Hoist is not responsible for any other transportation costs, but will ship freight collect parts either repaired or replaced under these warranties.

Hoist Fitness Systems
11900 Community Rd.
Poway, CA. 92064
(800)548-5438

PLEASE KEEP THIS FOR YOUR RECORDS