

PROFESSIONAL PRODUCTS FOR PROFESSIONAL RESULTS



Derma MD[®]
Skincare

Beautiful Skin...At Any Age!

With Derma MD Skincare



Sheila Malmanis, L.E.
President~Founder



Cleanse

Enzyme Cleanser

- Gently Exfoliates
- Excellent Makeup Remover
- Non-Drying
- Deep Pore Cleansing

Ideal for : All skin types including sensitive & acne-prone skin

This cleanser is designed to gently exfoliate, hydrate & deep pore cleanse. The mild enzymes of papaya are non-abrasive to the skin. Added ingredients with amino acids, coconut oil, magnesium lactate & glycerin enhance conditioning, providing for a healthier skin.

Directions:

Apply dime size amount of cleanser to hand and foam with water. Massage face and neck area gently. Rinse with tepid water. Follow with Pink Silk Serum & Ultra Shield am—Matrixyl 3000 & Copper CoQ10 Moisturizer pm.

Key Ingredients:

Papaya Enzyme - Natural enzymes that help exfoliate dead skin cells.

Proline, Serine - Are amino acids that aid in skin elasticity and thickness and maintaining healthier skin.

Urea - Increases Moisture Retention.

Calcium Panthothenate, (vitamin B5) - Attracts water, providing increased moisturizing properties.

Available Sizes:

120ml/4oz

240ml/8oz

960ml/32oz PRO



Pineapple-Papaya Jojoba Enzyme Scrub

- Calming and Soothing
- Nourish and Hydrate
- Nourish and Soften
- Exfoliates Gently

Refines ~ Retextures ~ Renews Your Skin

PRODUCT PURPOSE:

Non Abrasive exfoliating combination of Bromelain (pineapple enzyme) and jojoba beads formulated to exfoliate, re-texture and refine the skin. Bromelain enzyme effectively removes excess surface cells, while the micro-spherical jojoba beads dissolve and release jojoba oil into the skin. Used once or twice a week, skin will appear more vibrant, softer and luminous.

Key Ingredients:

Chamomile Extract: Calming & Soothing

Seaweed: Nourish & Hydrate

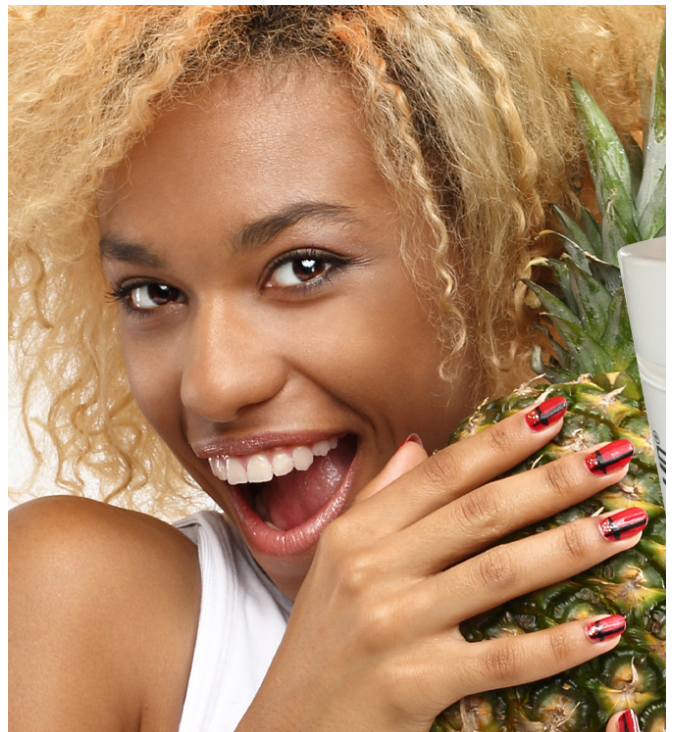
Jojoba Oil: Nourish And Soften

Papaya Extract: Exfoliate Gently

Bromelain (pineapple) Extract: Exfoliate Gently

Ingredients: Deionized Water, Aloe Vera Gel, Glycerin, Seaweed Extract (Laminaria Digitata), Hydrogenated Jojoba Oil, Chamomile Extract, Hydroxypropyl Methylcellulose, Carbomer, Sodium PCA, Papaya Extract, Pineapple Extract, Bromelain Enzymes and Papain Enzymes and Lecithin, Fragrance, Triethanolamine, Polysorbate 20, Phenoxyethanol, Sodium Benzoate, Citric Acid.

Size: 2 oz





Face Canvas

Invisible Flawless Primer



- Anti-aging
- Natural extracts
- Peptides
- Flawless skin

Nourishes Your Skin

INFORMATION:

An anti-aging invisible, flawless primer contains peptides, and natural extracts such as Sunflower, Grapeseed and Evening Primrose for nourishing and feeding the skin. Vitamins such as Vitamin E to protect the skin, while additional ingredients will even out the look of skin leaving a flawless and dewy finish. It's not just a primer, but an anti-aging formula to provide the application of makeup to glide on without the feel of oiliness. This formula is non-comedogenic & will not clog pores.

BENEFITS:

- Peptide Technology
- Firms & Smooths
- Creates Radiant Base
- Balance Skin
- Hydrates
- Non-Greasy

Ingredients:

cyclopentasiloxane, dimethicone crosspolymer, isopropyl myristate, polymethylsiloxane, dimethiconol, helianthus annuus (sunflower) seed oil, vitis inifera (grape) seed extract, camella sinensis leaf extract, vaccinium myrtillus leaf extract, oenothera biennis (evening primrose) flower extract, salix alba (willow) bark extract, lupinum albus seed extract, punical ganatum fruit extract, Arctostaphylos uva-ursi leaf extract, squalene, tocopheryl acetate, glycerin, aqua (deionized water), butylene glycol, carbomer, polysorbate 20, palmitoyl tripeptide-1, palmitoyl tetrapeptide-7, silica, titanium dioxide, mica, iron oxides.

Size: 1 oz



To revitalize the appearance of the eye area.

- Antioxidant Benefits
- Protects the Skin
- Decreases the Appearance of Dark Circles

Revitalizes the appearance of the eye area while protecting the skin.

Creamy, silky formulation developed to-revitalize the appearance of the eye area. Formulated with eyebright extract, Vitamins E, A and Vitamin K. Complex of three vitamins + Eye bright make this formulation one of a kind.

Eyebright is an herbal ingredient that is commonly found in natural skincare treatments for—you guessed it—the eyes... **Eyebright** contains flavonoids and tannins that have antioxidant benefits and protect **skin** from premature fine lines and wrinkles. **Eyebright** can also help decrease appearance of dark circles and inflammation.

Additional ingredients such as almond avocado and sesame seed oils will increase hydration and moisturize, while hyaluronic acid works to maintain moisture in the delicate skin area keeping it moisturized and hydrated.

Directions:

Apply a small pump and pat around eye area gently and allow to absorb. Recommended to be used twice daily for accelerated results.

Key Ingredients:

Glycolic Acid - Eye Bright: assists in brightening, reduce the appearance of dark circles and protects.

Vitamin A Palmitate: Reduce appearance of fine lines

Vitamin K: Helps reduce appearance of dark circles

Vitamin E: Antioxidant protection

Rosehip Seed Oil: Can be used to lighten your skin tone, thus allows for lessening appearance of under eye darkness.

Chamomile: Soothing to the eye area.

Directions: Purified Water, Aloe Vera Gel, Caprylic/Capric Triglycerides, Sweet Almond Oil, Avocado Oil, Sesame Seed Oil, Glyceryl Stearate, Vegetable Glycerin, Hyaluronic Acid, Sodium PCA, Dimethicone Copolyol, Rosehip Seed Oil, Evening Primrose (and) Borage Oil, Wheat Protein Amino Acid (and) Silk Protein Hydrolysate, Soy Isoflavonoids, Extracts of Ginseng, Eyebright, Chamomile, Ginkgo Biloba, Japanese Green Tea, Centella asiatica, Tocopherol Acetate (VitaminE), Vitamin A Palmitate, Vitamin K, Beta Glucan and Grape Seed Extract.

Size: 15ml



PINK SILK Firming Eye Gel

- Reduce fine lines
- Increase hydration
- Reduce puffiness
- Improve contour
- Firm and tighten

Firm and tighten the eye area as well as reduce fine lines.

Silky satiny feel eye gel with anti aging ingredients, retinyl palmitate and peptide and the # 1 antioxidant, astaxanthin. Astaxanthin helps protect the delicate eye area from developing future fine lines and wrinkles.

Directions:

Apply small amount onto ring finger, pat gently around corners of eye, underneath eye area and allow to absorb.

Key Ingredients:

Cyclopentasiloxane, Dimethicone, Vinyltrimethyl-Siloxysilicate Crosspolymer, Hesperidin, Alcohol Denatured, Tocopheryl Acetate, Retinyl Palmitate, Astaxanthin, Phytonadione, Palmitoyl Tetrapeptide-7

Available Sizes:

1/2 oz



Retail & Professional Recovery Hydro Boost Gel

- Intense Hydration
- Increases Moisture Retention
- Prevents Collagen Breakdown

Ideal for post microdermabrasion, laser treatments & peels. All skin types

Can be used immediately after treatments including peels to push hydration back into the skin. Hyaluronic Acid helps increase moisture retention.

Directions:

Apply with fan brush or spatula a thin layer of gel onto cleansed dry skin for increased hydration after drying treatments.

Key Ingredients:

Hyaluronic Acid - Increases moisture retention.

Available Sizes:

120ml/4oz PRO



Serums

Pink Silk



- Anti-Inflammatory Properties
- Reduce Redness
- Provides Increased Moisture
- Excellent Primer

Ideal for : All skin types including sensitive & acne-prone skin

The Pink Silk Face Firming Rejuvenator made with **caviar, peptide**, and a lipid and fat soluble antioxidant, Astaxanthin. This peptide is a red algae found primarily in Hawaiian waters is one of the more potent antioxidants to **REDUCE** appearance of redness and inflammation and help your skin feel more vibrant, smoother and younger looking instantly.

Directions:

Apply 1—2 pumps once or twice daily on clean skin. Massage gently all over face and neck. Follow with Ultra Shield SPF moisturizer am & Copper CoQ10 Moisturizer pm.

Key Ingredients:

Astaxanthin - An anti-inflammatory antioxidant, derived from the carotenoid family.

Palmitoyl Hexapeptide -12 - A lipopeptide that forms layers around and in between skin cells creating a barrier that keeps moisture intact and prevents it from escaping.

Copper Tripeptide-1 - Essential for collagen synthesis, and assists with tissue repair.

Caviar Extracts – Contains micro-nutrients to nourish the skin while improving elasticity.

Ascorbyl Palmitate - Vitamin C

Available Sizes:

30ml/1oz

120ml/4oz PRO



Moisturize

Collagen Boosting Vitamin C

- Plus Resveratrol
- Improve Broken Capillaries
- Reduce Inflammation
- Increase Collagen

Ideal for : All skin types including sensitive & oily.

This Vitamin C is a **daily treatment** for your face designed to help **promote new collagen** development and **improve skin elasticity, decreasing the appearance of fine lines and wrinkles**. The Enriched C will help lighten the appearance of **hyper pigmentation** as well as **improve the appearance of broken capillaries**.

Directions:

Apply 1-2 pumps all over face and neck twice daily. For anti-aging use daily with Matrixyl 3000 Peptide Serum for overall collagen building. Follow with Ultra Shield SPF am & Copper CoQ10 moisturizer pm.

Key Ingredients:

Pycnogenol® (pine bark): is found to be a super potent antioxidant that will help to inhibit collagen degradation.

Resveratrol - Antioxidant to help fight free radicals

Ascorbyl Palmitate - Vitamin C enhances collagen levels

Sodium Hyaluronate: Increases moisture retention

Chondrus Crispus Extract: Increases moisture.

Available Sizes:

30ml/oz



Retinoid Night Repair Skin Brightener

- Proven to stimulate the synthesis of collagen
- Reduces skin roughness
- Reduces hyperpigmentation
- Improves skin texture
- Prevents collagen breakdown
- Helps with skin repair
- No irritation
- Rejuvenation

Ideal for : Reversing the signs of aging.

Are you looking for the best treatment for **slowing down the aging process**, and **increasing collagen**?

This unique Retinoid Night Crème will decrease the appearance of **fine lines** and **wrinkles**. Thereby improving skin's texture, softening it and providing a more luminous appearance. Used 2x daily, your skin will be left rejuvenated, replenished and renewed.

Directions:

Apply a small amount all over face and neck starting with 3-4 nights a week. Gradually move into nightly application.

Key Ingredients:

Hydroxypinacolone Retinoate (HPR) related to Retinoic Acid Ester, binds directly to the retinoid receptors of the skin cells...no conversion needed such as retinols and retinyl palmitate

Tetrahexyldecyl Ascorbate stable, oil-soluble form of vitamin C...Helps reduce melanin production and brighten skin, potent antioxidant...found to remain stable in air & water up to 18 months. Has the ability to stimulate skin to produce glycosaminoglycans, the natural moisturizers that allow skin to absorb moisture from the body itself. Found to have a higher rate of conversion to Vitamin C within the dermis

Ferulic Acid, Tocopherol, (Vitamin E), Ascorbic Acid Ingredients:

Cyclopentasiloxane, Dimethicone Crosspolymer, Polysilicone-11, Ascorbic Acid, Bismuth Oxychloride, Ethylhexyl Hydroxystearate, Phenoxyethanol, Citrus Aurantium Dulcis (Orange) Oil, Tocopheryl Acetate, Retinyl Palmitate, Ferulic Acid, Hydroxypinacolone Retinoate, Glycine Soja (Soybean) Oil, Vitis Vinifera (Grape) Seed Oil, Prunus Armeniaca (Apricot) Kernel Oil, Carthamus Tinctorius (Safflower) Seed Oil, Borago Officinalis (Borage) Seed Oil, Oenothera Biennis (Evening Primrose) Oil, Linum Usitatissimum (Linseed) Seed Oil, Tocopherol, Tetrahexyldecyl Ascorbate, Dimethyl Isosorbide, Silica Dimethicone Silylate.

Available Sizes: 1.5 oz



Anti-Aging

Matrixyl 3000™

- Anti-Wrinkle—Hydra Firm
- Increase Moisture
- Less Lines & Wrinkles
- Firm & Tighten

Ideal for : Aging skin of all skin types including sensitive

Matrixyl 3000™, clinically proven ingredient **promotes wrinkle smoothing and improves tone and elasticity.** Combined with hyaluronic acid, skin is firmer, more hydrated, smoother and younger looking.

Directions:

Massage twice daily over entire face, neck, and under eye area and allow to absorb. Follow with Pink silk Face Firming Rejuvenator, Ultra Shield SPF am & Copper CoQ10 Moisturizer pm. Can be used immediately post op procedures.

Key Ingredients:

Matrixyl 3000™ - Works on decreasing density in wrinkles and overall improve-ment of skin surface.

Perfluorodecalin - Helps to increase oxygen content within tissue.

Cupric, Manganese & Zinc Sulfate - Allows for prompt skin penetration due to its low molecular weight.

Hyaluronic Acid - Increases moisture re-tention.

Octyl Methoxycinnamate -7.5%.

Available Sizes:

30ml/1oz

120ml/4oz PRO



Moisturize

Copper+Co - Enzyme Q10

- Mineral Moisturizer
- Reduce Redness
- Renew & Protect
- Reduce Wrinkles & Furrows

Ideal for : All skin types including rosacea, sensitive & acne-prone skin

Copper peptide complex **promotes collagen development** and **repairs skin** which in turn **reduces** the appearance of unsightly wrinkles or fine lines. Algae works to **reduce redness** appearance and helps standardize skin's moisture content leaving it feeling hydrated without being oily. **Distended capillaries appear less noticeable**. When used twice daily, it will also increase skin firmness leaving you feeling radiant and lovely every single day.

Directions:

Apply Pink Silk Serum and/or Matrixyl 3000 serum once or twice daily. Massage Copper CoQ10 Moisturizer gently all over face and neck. Light enough to use both day and night.

Key Ingredients:

Copper Peptide Complex - helps promote collagen levels.

Ceramides 3; 6; & 1 - increases moisture retention.

Algae - helps reduce appearance (redness).

Available Sizes:

30ml/1oz

240ml/8oz PRO



CHEBULA

BRIGHTENING
WHITENING LIGHTENING

PROBIOTIC

YOUTH RENEW MIST™

- Help improve redness such as with Rosacea
- Improves roughness found with Eczema
- Provides for healthier skin, hair, brows and lashes
- Calms Irritated Skin Soothes Sunburn

Formulated with JUST Proprietary Blend of Algae, Fungi & Bacteria.

Probiotics are recognized for making a healthy gut...Well Mist daily our ChebulaProbiotic Mist and see the difference in the overall appearance of your skin, hair and body.

Formulated with JUST Proprietary Blend of Algae, Fungi & Bacteria. No other additional ingredients to break down the probiotics and its own mechanisms. Just pure Probiotics.

Used daily will improve appearance of skin and hair by protecting and preserving skin's own Microbiome.

Directions:

Mist after shower, face & body. Can mist multiple times throughout the day. No residue. Just pat in and allow to absorb.

Ingredients:

Water + Proprietary Blend of Algae, Fungi and Bacteria

Size: 8 oz/240 ml



Sun Protection

SPF 30~Chebula Moisturizer

- Broad Spectrum
- Soothe~Hydrate~Nourish
- Antioxidants~Extracts
- Natural Moisturizers

Ideal for : All skin types including sensitive & acne-prone skin

This product is designed to protect the skin from UVA/UVB damaging sun rays. Safe enough to be after post procedures, yet effectively moisturizes skin and excellent for sensitive skin. Combination of stable & reflective properties of Zinc Oxide, antioxidant (Terminalia Chebula). Can be applied under makeup as a barrier.

Directions:

Apply daily a.m. to face, neck (include ears), décolleté, back of hands or any area as needing protection. Can be used immediately after post-laser procedures.

Size:

1.5oz
240ml/8oz

Key Ingredients:

Zinc Oxide Photostable mineral ingredient with a high refractive index. Helps to protect from both UVA & UVB rays of ultraviolet light. Chebula protects from Free Radicals, found to be more potent than Vitamin C & E, and has both lightening and brightening properties. Combination of both makes this formula maximized for protection.

Ingredients:

tocopheryl acetate (vitamin E), ethylhexyl triazone, allantoin, bisabolol, ethylhexyl purlin extract, aqua, alkyl silica, 25% zinc oxide, PEG-30, dipolyhydroxystearate, polyhydroxystearic acid, laureth-12, PEG-8, dimethicone, glycerin, sodium PCA, dextrin palmitate, zinc stearate, magnesium sulfate, ORG aloe vera, leaf juice, camelia sinensis (green tea) leaf extract, (milk thistle) seed extract, (cranberry) seed oil, (meadowfoam) seed oil, Rubus idaeus (red raspberry) seed oil, terminalia chebula.



CHEBULA

BRIGHTENING WHITENING LIGHTENING

Firmer More Vibrant Looking Skin

OVERNIGHT SLEEP MASK

- Power-packed mask
- 28% Collagen Peptides
- Leaves skin more vibrant
- Lightens dark spots
- Provides you with brighter skin tone

– Collagen Peptides & Glutathione –

A power-packed velvety smooth mask combined with 28% Collagen Peptides, “T” Chebula, Glutathione and Vitamin C changes your skin overnight!

“T” (Terminalia Chebula) a super antioxidant found from berries, is considered stronger than Vitamin C, Vitamin E, and BHT. The antioxidant activity of the extract is significantly higher than the standard ascorbic acid.

Terminalia Chebula, an Ayurvedic is recognized for its powerful anti-aging antioxidant properties. Now it has recently hit the beauty market in topical cosmetics. Similar to ingredients like Turmeric, this unique one of a kind, ingredient is now being used and talked about by movie stars such as Olivia Wilde, and other celebrities.

This natural ingredients is found to perform in 5 ways:

- Reduces appearance of fine lines & wrinkles
- Firms
- Brightens
- Smooths roughness
- Evens skintone

The combination of these clinically proven ingredients will firm, tone, lighten dark spots, increase hydration and improve the luminosity of the skin overnight. Used on a weekly basis, skin will appear more youthful, vibrant and overall healthier.

Directions:

Dispense 1-2 pumps onto hand or fan brush, apply all over face & neck... do not rub in, pat gently onto skin and leave overnight. In the morning, rinse mask off thoroughly. Proceed with routine regimen.

Enjoy your beauty sleep and wake up with a more vibrant, luminous and brighter skintone. Use the CHEBULA FACE & NECK serum to enhance quicker results for lighten dark pigment areas, improve brightening and hydration. Recommended 3-4 times weekly.

Ingredients:

Collagen Peptides, Vitamin C, Glutathione, Vitamin E, Aqua (water), Terminalia Chebula, Hyaluronic Acid, Vitamin B3, Vitamin B6, Glycerinum

Size: 2 oz/60 ml



CHEBULA

BRIGHTENING WHITENING LIGHTENING

Rejuvenating~Illuminating~Hydrating

ANTIOXIDANT SERUM

- Clinically proven lightening ingredients
- Improves discoloration/pigmentation
- Restores skin's radiance
- Increases moisture retention
- Pairs well with Vitamin C, Hyaluronic acid and Retinoids

– Terminalia Chebula –

This lightweight serum formulated with high percentages of clinically proven lightening ingredients. The synergy of "T" Chebula, combined with Tranexamic Acid, Azeglycic Optima Glutathione, and Alpha Arbutin work quickly to improve pigmentation, lighten dark spots, restore radiance and brighten the skin.

"T" (Terminalia Chebula) a super antioxidant found from berries, is considered stronger than Vitamin C, Vitamin E, and BHT. The antioxidant activity of the extract is significantly higher than the standard ascorbic acid.

Tranexemic Acid: Derivative of Amino Acid Lysine and performs in three ways

- Fades discoloration
- Moisturizes dehydrated skin
- Reduces appearance of acne scars

Directions:

Apply 1-2 pumps of serum all over face with fingertips. Massage gently and allow to absorb. Proceed with routine regime.

Key Ingredients: Terminalia Chebula, a powerful anti-aging antioxidant used by movie stars such as Olivia Wilde and other celebrities is found to perform in 5 ways:

- Reduces appearance of fine lines & wrinkles
- Firms
- Brightens
- Smooths roughness
- Evens skintone

Ingredients:

Alpha Arbutin, "T" Chebula, Tranexamic Acid, Azeglycic Optima, Cucumber Extract, Vitamin Extract oils, Hyaluronic Acid, Carrot Extract Oil, Orange Oil and Glutathione.

Size: 1 oz/30 gm



CHEBULA

BRIGHTENING WHITENING LIGHTENING

Rejuvenating~Illuminating~Hydrating

PIGMENTATION SERUM

- Visibly reduce patches of discoloration, sometimes referred to as melasma
- Helps to hydrate and improve skin tone
- Enlightens, Whitens and Lightens
- Increases moisture retention
- Nourish the skin

– Terminalia Chebula –

A potent, clinically proven serum with new cutting edge ingredients 8% Tranexamic acid , 10% Chebula and 7% Azeglycic Optima Extract.. These new cutting edge ingredients make this a one of a kind powerful lifting & lightening serum for conditions such as pigmentation, melasma and dark spots. Unlike Hydroquinone it is a NATURAL Based formulation. The additional anti-aging ingredients will help to reduce fine lines & wrinkles, increase moisture retention.

“T” (Terminalia Chebula) a super antioxidant found from berries, is considered stronger than Vitamin C, Vitamin E, and BHT. The antioxidant activity of the extract is significantly higher than the standard ascorbic acid.

Tranexemic Acid: Derivative of Amino Acid Lysine and performs in three ways

- Fades discoloration
- Moisturizes dehydrated skin
- Reduces appearance of acne scars

Directions:

Gradually introduce 3-4 times weekly at night. Start with 1-2 pumps on face & neck. Once skin has acclimated to the acid, apply 2x daily to accelerate results. Always use Sun Protect SPF 30 with 25% zinc oxide to protect from further discoloration and moisturize skin. To further enhance quicker results, use the Chebula Overnight Sleep Mask, apply on top of serum nightly.

Ingredients:

Alpha Arbutin, Tranexamic Acid, Azeglycic Optima Extract, “T” Chebula, Cucumber Extract, Vitamin Extract Oils, Hyaluronic Acid, Carrot Extract Oil, Orange Oil and Glutathione.

Size: 1 oz/30 gm



Moisturize

Soy Moisturizer

- Soften Dry, Patchy Skin
- Less Irritation & Itchiness
- Super Hydration

Ideal for: dry skin, rashes, irritations, sunburn, burns, eczema, rosacea, dermatitis & post treatment.

Soy bean oil helps to reduce inflammation, shea butter, olive oil, and rose hips seed oil will increase moisture retention, and additional conditioning ingredients such as algae will help to hydrate. Skin will be softer, less red and smoother. Excellent when used on broken fissures in heels, and callouses to increase smoothness and hydration. Also can be used after various non-invasive cosmetic procedures to keep skin and moist.

Directions:

Apply to affected areas twice daily or as needed.

Key Ingredients:

Soy Bean - Reduce inflammation.

Shea Butter, Olive Oil, and Rose Hips Seed Oil- Increase moisture retention.

Quercetin-Bioflavanoid - Helps with repair.

Available Sizes:

60ml/2oz

120ml/4oz PRO



Exfoliate

Exfoliating Micro Peel Crème

- Exfoliate Dead Skin Cells
- Reduce Lines & Wrinkles
- Reduce Pigmentation
- Improve Texture

Ideal for : All skin types

These professional, finely cut corundum crystals, as found in professional microdermabrasion treatments. These tiny crystals combined with olive oil and soy bean oil **exfoliate dead skin cells, hydrate and soften skin and improve texture.** Combined with astaxanthin, a natural red algae minimizes appearance of redness.

Directions:

Apply small amount of crème onto a clean dry face. Work crème into face in a circular motion, massaging onto skin. If too abrasive, use a small amount of water to soften the crystals. Rinse thoroughly with cool water, and remove all crystals with a warm washcloth, proceed with skincare regime.

Key Ingredients:

Aluminum Oxide Crystals - exfoliates dead skin cells

Soy and Olive Oil - increases moisture retention

Astaxanthin (red algae) - relieves redness

Available Sizes:

60ml/2oz

240ml/8oz PRO



Professional Oxygen Bubble Mask



Revives dull, tired skin leaving it clean

This oxygenating treatment helps to instantly revive dull, tired skin leaving it clean, soothed, glowing and refreshed. Provides immediate and long term benefits. Pure stabilized oxygen complex delivers important peptides, vitamins, amino acids and antioxidants to detoxify, hydrate and replenish skin. Helps to increase skin "plumpness" and decrease facial "puffiness". Ginseng Extract provides an additional oxygen boost to rejuvenate and purify the skin.

Directions: Apply over slightly moist skin, avoiding eye area. The gel will begin to lightly bubble and a slight tingling and cooling sensation will develop, indicating delivery of additional oxygen to skin's surface and oxygenation of active ingredients. Let remain on the skin 3 to 5 minutes. Rinse face thoroughly with warm water after using.

Professional Use: Excellent mask to be applied after procedures such as peels, microdermabrasion, and other non invasive procedures where skin needs calming and soothing. Excellent as a stand alone upgrade instant gratification mask.

Key Ingredients: Aloe Vera Gel, Glycerin, Disodium

Lauroamphodiacetate, Polyhydroxystearic acid and Isononyl Isononanoate and Ethylhexyl Isononanoate and Sodium Cocamidopropyl PG-Dimonium Chloride Phosphate and Perfluoroisohexane and Butylene Glycol, Sodium Trideceth Sulfate, Glucose and Fructose and Sucrose and Alanine and Glutamic Acid and Aspartic Acid, d-Penthanol, Tocopheryl Acetate, Retinyl Palmitate, Ginseng Extract, Xanthan Gum, Guar Gum, Chamomile Extract, Corn Extract, Sodium PCA, Pumpkin Seed Extract, Palmitoyl Oligopeptide, Palmitoyl Tetrapeptide-7, Phenoxyethanol and Caprylyl Glycol and Ethylhexylglycerin and Hexylene Glycol, Essential Oils, Glycosaminoglycans, Sea Buckthorn Oil.

Caution - If the skin becomes irritated, wash off immediately with warm water. Avoid contact with eyes and mucous membranes. Store the container.

Available Sizes: 4oz 10-12 applications PRO



Mask

Revitalizing Avocado & Pumpkin

- Exfoliate
- Reduce Fine Lines
- Increase Moisture Retention
- Improve Texture

Ideal for : All skin types

Exfoliating properties of pumpkin combined with papaya work synergistically to **remove dead skin cells, root out impurities**, while **softening and stimulating cell renewal**. Regular use improves skin's texture and feel, enhances micro-circulation, leaving the skin with a more vibrant and revitalize younger appearance.

Directions:

Pump 3-4 pumps product from airless jar. Apply masque onto thoroughly cleansed skin with spatula or cleansed finger tips. Allow to maintain on face and neck for about 15-20 minutes. Remove with a warm sponge or soft cloth, proceed to rinse thoroughly removing all product.

Key Ingredients:

Pumpkin (cucurbita pepo) - Fruit Extract exfoliates gently.

Avocado Oil - softens, hydrates and moisturizes.

Japanese Green Tea Extract - is an antioxidant (protects from free radicals).

Available Sizes:

60ml/2oz



Wasabi Acne Cleanser



- Anti-Bacterial Properties
- Increases Cell Turnover
- Non-Drying
- Non-Irritating

Ideal for : oily, acne-prone, blemish-prone, unbalanced & congested skin.

A gentle gel based cleanser with natural willow bark, algae extract and wasabi japonica root work to provide **Blemish Free Skin!** A combination of proven ingredients developed specifically for acneic and oily skin types help **reduce surface, oil, bacteria** and **debris** without stripping skin of its natural oils. Skin is left feeling hydrated and conditioned. **Natural Ingredients.**

Directions:

Moisten face and gently work cleanser in-to a circular motion. Best used 2x's daily. Rinse with warm water. Follow with Re-surfacing Gel, Refing Toner & SPF

Key Ingredients:

Wasabi Japonica Root -Anti-bacterial properties.

Glycerin - Conditions.

Algae Extract -Increase moisture, nourishing.

Available Sizes:

120ml/4oz

240ml/8oz

480ml/16oz PRO



Wasabi Acne Refining Toner

- Hydrates Dry Skin
- Soothes
- Unclogs Pores
- Kills Acne “P” Bacteria

Ideal for : all skin types including sensitive & acne-prone skin

This special blemish fighting toner is designed to hydrate and soothe as it alleviates congested skin. Niacinamide is known to be an antioxidant and anti-inflammatory ingredient that kills the acne “P” bacteria, leaving the skin free of blemishes. This toner helps to unclog pores without drying the skin.

Directions:

Cleanse face with Wasabi Cleanser. Proceed by misting Refining Toner all over face and other problem areas twice daily. Let dry. Follow with Wasabi Resurfacing Gel & SPF

Key Ingredients:

4-5% Niacinamide (vitamin b3) - anti-oxidant that also controls bacteria count.

Wasabi Japonica Root - helps control bacteria count.

Glycerin - Conditions.

Algae Extract - Increase moisture, nourishing.

Available Sizes:

120ml/4oz



Wasabi Acne Resurfacing Gel

- Reduces Bacteria Count
- Clears Up Blemishes
- Hydrates
- Non-Drying & Non-Irritating

Ideal for : oily, acne-prone, blemish-prone, unbalanced & congested skin.

Treat and prevent breakouts with this acne treatment gel that exfoliates, minimises the appearance of scarring, promotes healing and helps control acne 'p' bacteria. Physician strength without prescription.

Directions:

Cleanse face thoroughly with Wasabi Cleanser. Next mist on Wasabi Refining Toner. Make sure skin is dry, then apply 1-2 pumps of the Wasabi gel and allow to dry. Proceed with Moisturizer. Best when applied in the evening. If used during day, be sure to apply SPF.

Key Ingredients:

4-5% Niacinamide (vitamin b3) - anti-oxidant that also controls bacteria count.

Salicylic Acid - exfoliates.

Wasabi Japonica Root -helps control bacteria count.

Hyaluronic Acid - increases moisture retention.

Available Sizes:

30ml/1oz



Wasabi Acne

Zapper

- Spot Treatment
- Reduces Bacteria Count
- Clears Up Blemishes In 24-48 Hours
- Non-Irritating & Non-Drying

Ideal for : all skin types

For those occasional breakouts. Easy-to-use roller ball applicator formulated with anti-bacterial ingredients to **SLOW DOWN** oil production, **increase hydration** and **stop blemishes** before they start.

Directions:

Apply this roller ball onto area of irritation, and see the blemishes start to diminish almost instantly.

Key Ingredients:

4-5% Niacinamide (vitamin b3) - anti-oxidant that also controls bacteria count.

Salicylic Acid - exfoliates.

Wasabi Japonica Root - helps control bacteria count.

Available Sizes:

8ml





Retail & Professional Blue Bomb Gel

- Increases Hydration
- Soothes & Cools
- Reduces Irritation

Ideal for post microdermabrasion, laser treatments & peels. All skin types

Can be used immediately after waxing and extractions. Soothing, cooling gel combined with Aloe and Azulene will soothe and reduce irritation, increase hydrating, and additional ingredients of Lavender and Japanese Green Tea offer an immediate sensation of comforting freshness.

Directions:

Massage over entire face, neck, and under eye area and allow to absorb after professional procedures. Proceed with post treatment skin care regime. Recommended for all skin types, including sensitive.

Key Ingredients:

Azulene - Blue crystalline extract from the essential oil of matricaria & chamomile flowers. Recognized for soothing.

Hydrolyzed Glycosaminoglycans - Enhances elasticity & flexibility of skin.

Japanese Green Tea Extract - Helps reduce redness, irritation and protect from free radicals.

Aloe Vera Gel - The gelatinous inner leaf provides excellent hydrating, softening & soothing qualities.

Available Sizes:

120ml/4oz PRO



PINK SILK

Face Firming Mask

- Firm
- Tighten
- Hydrate
- Smooths
- Increases suppleness

Face Firming Rejuvenator

Anti-aging creamy smooth mask formulated with Astaxanthin, the # 1 antioxidant. Combined with Collagen (plant based), Vitamin E and Sunflower Seed Oil work synergistically to increase hydration and moisture retention, while providing younger looking skin.

Directions:

Apply onto clean face and neck. Smooth on and allow to maintain for 15-20 minutes. Remove thoroughly with warm tepid water. Proceed with other pink silk products or your favorite serums and moisturizers.

Key Ingredients:

Aqua (Deionized Water), Helianthus Annus (Sunflower) Seed Oil, Kaolin, Polyacrylate-21, Bentonite, Glyceryl Stearate Se, Hydrolyzed Collagen, Peg-100 Stearate, Acrylates/Dimethylaminoethyl Methacrylate Copolymer, Sorbitol, Cetyl Alcohol, Dimethicone, Astaxanthin, Tocopheryl Acetate, Phenoxyethanol, Ethylhexylglycerin, Red 40

Available Sizes:

2 oz



Retail & Professional Pumpkin & Papaya Masque

- Increases Hydration & Firmness
- Reduces Redness & Irritation
- Improves Texture

Ideal for anti-aging & acne facials—all skin types

This mask is designed for use in anti-aging and acne treatment programs to stimulate cell turnover.

Directions:

Gentle enough to be used two to three times a week. Apply with fan brush a thin layer of mask onto cleansed skin. Allow to dry and remain on skin approximately 15-20 minutes. Remove using warm, tepid water with sponges moistened or soft gauze. Proceed with skin care regimen. Avoid eye area.

Key Ingredients:

Papain & Pumpkin Seed - Exfoliates and digests dead skin cells.

Kaolin Clay - Brings impurities to the surface. Helps to tighten skin.

Japanese Green Tea - Antioxidant to scavenge free radicals.

Available Sizes:

120ml/4oz PRO



Professional Only

Seaweed Honey Masque

- Firm
- Tighten
- Hydrate
- Revitalize

Ideal for mature skin types

This mask was developed for mature skin types. This combination of ingredients will provide suppleness, moisture, tightening and firming as it nourishes and feeds the skin with additional antioxidants and calming properties.

Directions:

Apply with fan brush or spatula a thin layer of mask onto cleansed dry skin. **Note; For additional firming & tightening, apply a thin layer of Derma MD Matrixyl 3000 under the mask and allow to absorb.** Allow mask to dry and remain on skin approximately 15-20 minutes. Remove using tepid water and sponges or moistened soft gauze. Proceed with skin care regimen.

Key Ingredients:

Ascorbyl Palmitate - Antioxidant

Algae (seaweed extract) - Revitalizes and moisturizes, providing suppleness, tightening and firming while nourishing the skin.

Honey Hydrates - Moisturizes, tightens and occludes.

Apricot Kernel Oil - Occlusive and moisturizing. Contains high content of vitamin C.

Available Sizes:

120ml/4oz PRO



Professional Only

Gentle Corrector Peel

- Improves Cellular Turn Over
- Reduces Large Pores
- Lightens Dark Spots

Ideal for resurfacing & hyperpigmentation. All skin types except sensitive.

Improves the cellular turn over and reduces the appearance of large pores and gives a healthy glow to the skin. Kojic acid helps to lighten dark spots. Excellent for hyper-pigmentation.

Directions:

Prep skin. Apply gel to the face starting at the forehead to check sensitivity. Leave on for 5—10 minutes according to response of the skin. Remove the peel with Enzyme Cleanser using tepid water and pat dry. Follow with post treatment.

Key Ingredients:

Glycolic Acid - The smallest molecular structure of the AHA's, allows for better & deeper penetration.

Lactic Acid - Provides softening and effective exfoliating.

Pyruvic Acid - This acid helps for treating both oily/problematic skin. Excellent exfoliating properties.

Kojic Acid - a mild pigment inhibitor. Helps brighten skin and helps prevent activity of tyrosinase.

pH 2.0—3.0

Available Sizes:

120ml/4oz PRO



Professional Only

Medium Corrector Peel

- Improves Cellular Turn Over
- Reduces Large Pores
- Gives healthy Glow

Ideal for resurfacing . All skin types except sensitive.

Improves the cellular turn over and reduces the appearance of large pores and gives a healthy glow to the skin.

Directions:

Prep skin. Apply gel to the face starting at the forehead to check sensitivity. Leave on for 5—10 minutes according to response of the skin. Remove the peel with Enzyme Cleanser using tepid water and pat dry. Follow with post treatment.

Key Ingredients:

Glycolic Acid - The smallest molecular structure of the AHA's, allows for better & deeper penetration.

Lactic Acid - Provides softening and effective exfoliating.

Pyruvic Acid - This acid helps for treating both oily/problematic skin. Excellent exfoliating properties.

pH 1.5—2.0

Available Sizes:

120ml/4oz PRO

As a Super Powered Booster for Your Clinic's Professional Treatments



Using Derma MD's products to increase the effectiveness of your clinic's professional treatments is a popular way to boost the visible benefits and client satisfaction of more costly treatments such as collagen induction therapy, micro needling, IPL, RF skin tightening, microdermabrasion, and chemical peels.

For the days leading up to your client's appointment it is highly recommended they prep their skin for at least a week before their appointment by using the appropriate products according to the procedure being performed. Using these products before their professional treatment kick starts their skin's cellular turn over, brightening and tightening. Think of it as their warm up before working out. Prepping skin is essential to get the most from the professional treatment.

PRE TREATMENT SUGGESTED PROTOCOL:

The most beneficial features include:

Hydrating (HydroBoost)

Increasing cellular turnover (Retinoid/Micropeel Cream) so that your client's skin is at its best state for the professional treatment.

NOTE: Adding Collagen Boosting Vitamin C combined with the usage of Retinoid the week before their treatment will help the reduction of hyperpigmentation, dark spots and liver spots therefore an excellent recommendation to use as a preparation for any of your treatments aimed at reducing sun and age spots.

POST TREATMENT SUGGESTED PROTOCOL:

Following pro treatments, such as with Micro-Needling, Microdermabrasion and or certain Non-Invasive Laser Treatments, the skin can feel irritated, dry and even damaged.

Recommended: CBD Restore Recover Repair BioCellulose Gel Mask is the perfect post treatment mask to add to your professional treatment to calm, sooth and deliver peptides, amino acids, and additional anti-aging ingredients to increase hydration, detoxify and aid in the healing process.

Directions: Apply it to newly treated skin, allow to maintain on for 30 minutes, and then remove. Massage the remaining solution (gently) into skin and apply Ultra Shield SPF 30. Send client/patient home with remaining masks to continue to benefit your procedures

NOTE: If you do not use the CBD BioCellulose Mask, which can be used on majority of procedures performed, then suggested protocol would be as follows:

MICRONEEDLING: Hydro Boost, Copper Moisturizer and SPF (according to level of intensity, the HydroBoost and SPF may be enough).

MICRODERMABRASION: Blue Bomb Hydrating Gel Mask, apply a think layer, allow to absorb and apply small amount of Ultra Shield SPF 30

IPL (intense pulse light therapy): THE CBD mask really works on calming, soothing and cooling, reducing redness, but as an alternative use just the Copper Moisturizer and SPF 30.

For the first 48 hours following the majority of most professional treatment it is our suggestion to use the following three products only

- Hydro Boost (hyaluronic acid)
- Copper Moisturizer
- SPF 30 UltraShield

These products deliver the optimal ingredients needed for skin post treatment to keep hydrated/soothed, calm and moisturized.

The recommended post-treatment routine at home is recommended by the professional skin specialist according to the procedure performed. These suggested protocols are Derma MD® recommendation only.

Suggested Protocols for Rosacea



Rosacea is a chronic inflammatory condition resulting in swelling of the vessels, affecting generally people between 30-60, and women more than men.

- Manifest as a redness around the middle of the face, generally the nose and cheeks in a butterfly pattern
- Has telangiectasia (couperose)
- Is NOT acne, and does not have comedones
- On the sun exposure areas of the face, though sometimes the neck and chest also
- Especially occurring in fair skinned persons

HOME CARE

Each Stage of Rosacea will require different treatments and products. Following are the Derma MD recommended products of Rosacea.

Enzyme Cleanser	AM/PM
Pink Silk	AM
Ultra Shield Moisturizer SPF 30	AM
Copper CoQ 10 Moisturizer	PM

Optional treatments are now available that involve physician only treatments, such as VPL-IPL, LED and PDT/ALA

For detailed information on the suggested products, see the Product Information Sheet in the previous sections of this manual.

Suggested Protocols for Acne Care



Acne is the most common skin disorder in the United States, affecting 17 million+ persons at any given time. It is a physiologically and psychologically damaging skin condition. Acne scars develop to some degree in 95% of people who suffer from acne, and the lesions and scars cause both physical and emotional scars, according to the American Association of Dermatology.

Propionibacterium acnes, called *P. acnes*, is the anaerobic bacteria present in all follicles that can cause inflammation in the papillary area of the follicle. Dead cell matter and sebum clog the pores and cause inflammatory and non-inflammatory acne. Patients/clients with acne will constantly fight the condition and must treat it effectively, according to the Class of Acne, with a **daily routine** and **established routine clinical care**.

To treat an acne client effectively, a professional must know the Classes of Acne and how to treat them with professional and home care products. **Derma MD** has acne skin care products needed by the professional to treat them, but the aesthetician must recognize the Classes to define effective professional and home care. You are advised to learn these Classes and the products that treat them.

THE CLASSES OF ACNE

Class 1: Mild Acne “Occasional Break Outs”

Comedones:	0 to 10
Papulopustular Lesions:	0 to 10
Inflamed Cysts:	none to occasional (hormonal)

Class 2: Mild to Moderate Acne “Always Breaks Out Somewhere”

Comedones:	10-25
Papulopustular Lesions:	10-20
Inflamed Cysts:	None to occasional

Class 3: Moderate to Severe “Break Outs All Over”

Comedones:	10-50
Papulopustular Lesions:	20-30
Inflamed Cysts:	a few

Class 4: Severe “Pustular and Cystic” (Refer to a Physician)

Comedones:	50
Papulopustular Lesions:	30+
Inflamed Cysts:	Many

ACNE PRODUCTS

Acne can be a complex condition to work with, but if the care-giver knows the class of the acne, some structure can be provided in defining the treatment and home care. **Derma MD** has provided the following recommendations on the care according to the Class of Acne. For more understanding of each product, refer to the Product Information Sheets in the “Acne” section of this manual.

Class 1: Mild Acne “Occasional Break Outs”

Enzymatic Cleanser	AM/PM
Copper or Vitamin C for moisturising	PM
3 Step System Kit (follow directions on box)	PM
Wasabi Pads or Zapper to treat as needed	PM
Ultra Shield Moisturizer SPF 30	AM





Retail & Professional Tightening and Firming

- Reduce inflammation
- Immediate Results
- Provides Calming & Soothing
- Immediate Hydration
- Reduces Redness
- Smooths Skin/
Improves Texture
- Improves Elasticity and
Collagen when used
weekly.

Revolutionary multi tasked Biocellulose Mask with Nanotechnology delivery shows immediate tightening, firming, reduction of inflammation/redness and hydration after 30 minutes .

Revolutionary multi tasked Biocellulose Mask with Nanotechnology delivery shows immediate tightening, firming, reduction of inflammation/redness and hydration after 30 minutes due to the level of integrity of the nano particle size of the CBD molecule. Contains **hemp derived (Cannabidiol) CBD Isolate (300 mg)**. Provides maximum absorption and penetration that is far superior than most masks found in marketplace . Extracted exclusively from HEMP, manufactured in USA and has **NO “THC” psychoactive compounds**. Formulated with coconut fibers, adheres like a second skin. Contains 17 amino acids, Copper Tri-peptide 1 (GHK-Cu), Hydrolyzed Collagen (from plant), additional peptides, antioxidants and multiple anti-aging ingredient. Designed to be used post treatment and continued home care weekly.

NOTE: Maximum usage per mask (3 times). Not for different clients, for personal use only. Suggested Use: One for post treatment, the next three in box goes home with patient/client for continued home treatments.

NOTE: Excellent used for procedures such as Post Micro-Needling, RF Micro-Needling, Peels, Microdermabrasion, and other non-invasive procedures to reduce redness, calm inflammation, soothe and hydrate.

Size: Each Box Contains 4 Masks , each mask can be used 3 x = to 12 treatments for home care.

Directions:
Apply to face and neck daily by itself or with other topicals. Professional use: After microneedling, and other procedures, apply next day for ongoing benefits

Key Ingredients:
CBD (nanotechnology) – Recognized for its anti-inflammatory properties and has 10x more potency and allows for 100% absorption.
17 Amino Acids - Responsible for collagen production.
Copper Tripeptide-1 (GHK Cu) - Improve skin wrinkles, improves collagen synthesis for firmer tighter skin.
Acetyl Hexapeptide-8 - Lessens contractions and reduce depth of wrinkles.
Niacinamide - Brightens, protects and improves moisture retention.



Retail & Professional Lightens Skin



- Lightens Dark Spots
- Brightens Skin tone
- Reduce Redness
- Reduces Lines & Wrinkles
- Increases Collagen Synthesis
- Provides Soft, Silky Skin

Developed to be used both professionally post treatment and continued home care to enhance results.

Patent Pending Formulation with Hemp Derived CBD Isolate, 300 mg. Extracted exclusively from HEMP, manufactured in USA and has **NO "THC" psychoactive compounds.**

Developed to be used both professionally post treatment and continued home care to enhance results. A satiny, silky texture formulated with Ascorbyl Tetraisopalmitate (Ester C) that is a proven stable vitamin C and increases UVA/UVB protection. Niacinamide brightens and increases moisture retention, as the additional combined ingredients increase firming, tightening and moisturizes. Recommended to be used with RED Light Therapy to immediately re-hydrate the skin after treatment and prevent dryness.

Directions:

Apply 1 pump to face and neck daily. Proceed with rubbing upward on neck and finish with face. Very concentrated, do not overuse. Allow to absorb. Skin will feel silky.

Key Ingredients:

CBD (nanotechnology) – Recognized for its Anti-Inflammatory Properties.

Hyaluronic Acid - Increases moisture retention, plumps, and softens lines.

Vitamin A - Increases cellular turnover.

Alpha Lipoic Acid - Potent lipid and oil soluble antioxidant

Niacinamide - Brightens, protects and improves moisture retention

Ubiquinone (CO-Q10) - Antioxidant

Ascorbyl Tetraisopalmitate (Ester c) - The newest form of Vitamin C. A molecule derived from Vitamin C and isopalmitic acid, ascorbyl tetraisopalmitate has been shown to absorb into skin faster than any of the other forms of Vitamin C. Aside from that benefit, it appears to have similar collagen- rebuilding properties to other forms of Vitamin C as shown in its ability to increase UVA/UVB photoprotection and to aid in the healing of burns.



CBD Intensive Relief Balm

(1000 mg) **Hemp-Derived** (cannabidiol)

- 1000 MG CBD
- Immediate Relief
- 3.5 oz Airless Pump
- Relieves Muscle Aches
- Relieves Chronic Pain
- Soothing~Calming
- Nice Scent~NO strong Menthol Smell

Concentrated CBD Relief Balm

Concentrated CBD Relief Balm that delivers rapid absorption and immediate relief in matter of minutes.

CBD Isolate (hemp-derived) cannabidiol. Third party tested.

Directions:

Apply 2-3 pumps (according to size of area needed) and massage into areas to relieve pain & stiffness.

Absorbs instantly wash hands before and after application.

Do not apply to face or eye areas, can be applied to neck areas.

Ingredients:

Purified water, witch hazel extract, Japanese green tea, aloe barbadensis gel, hemp seed oil, vegetable glycerin, chamomile extract, white willow bark extract, dexapanthenol (vitaminB5), glucosamine sulfate, shea butter, methylsulfonylmethan (MSM), vitamin a palmitate, SD alcohol 40, hemp-derived cannabidiol (CBD), chondritin sulfate, comfrey root extract, sodium carbomer, wintergreen oil, polysorbate-20, peppermint oil, vitamin E acetate, allantoin and grapeseed extract.

Size: 3.5 oz



Derma MD[®]

Skincare

- Professional Products For Professional Results
- Post Treatment~CBD Technology
- Anti-Aging~Rosacea
- Acne

23025 N. 15th Avenue
Suite # 104
Phoenix, AZ 85027

O: 623-440-6812

C: 602-738-7307

www.dermamdskinicare.com

www.cuchishere.com