



## Twist Dynamics Transmission and Storage Mat Kit (2015-2024) Installation Instructions

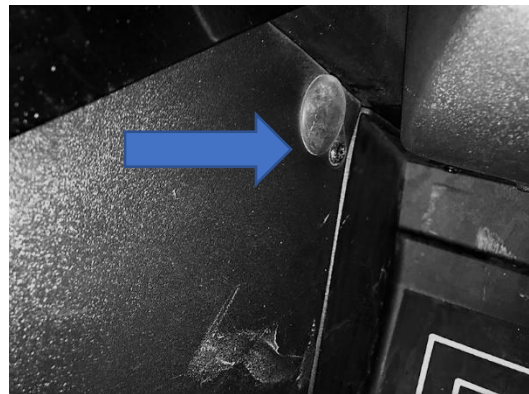


### Tools Required-

All you will need is a rag, a 16mm socket and wrench, and some sort of surface cleaner (such as isopropyl alcohol, primer, or water).

### STEP 1.

Locate and remove both seatbelt bolts (driver and passenger side) using the 16mm socket or wrench. Be sure to also remove any of the rubber caps/seals, located in the transmission tunnel section of the bike.





**STEP 2.**

Using your rag and denatured alcohol (isopropyl), wipe down/clean all surfaces that the adhesive backing of the mats will be applied to. This includes:

Transmission tunnel walls (driver and passenger sides), glove box, and the bottom of driver and passenger storage compartments (located behind the seats).

**STEP 3.**

Sort all pieces within the kit to familiarize yourself with them and where on the bike they need to be applied. All components to this kit are cut specifically for individual positions on the bike. Refer to the photos below for added assistance.



GLOVE BOX LINER



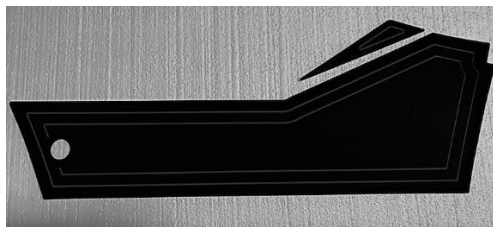
DRIVER'S SIDE STORAGE COMPARTMENT



PASSENGER'S SIDE STORAGE COMPARTMENT



DRIVER'S SIDE TRANSMISSION TUNNEL



PASSENGER'S SIDE TRANSMISSION TUNNEL

**\*2020+ Slingshot Owners – You will not need to utilize the smaller, triangular pieces depicted on the driver and passenger transmission tunnel mat photos. These components fill extra space on 2015-2019 transmission tunnels.**

**STEP 4.**

Begin mounting the individual mat pieces to the bike. We will start with the transmission tunnel mats for the purposes of this installation guide but feel free to begin wherever you feel most comfortable.

Passenger's side – Align the hole in the mat kit directly over the threading where the seatbelt bolt will be reinserted. From here, begin to slowly peel off the backside of the mat, exposing the adhesive backing. Slowly and carefully work your way from the back to the front of the bike, firmly applying pressure and smoothing out the mat as you do so. Use the top and bottom framing of the transmission tunnel as a guide and keep the mat as centered and level as possible. For 2015-2019 bikes, use the smaller, triangular piece to finish off the overall look and to fill in the void in the upper, front corner. Once complete, be sure to reinsert your seatbelt bolt and tighten properly!!!

Driver's side – Repeat steps above. Again, do not forget to reinsert and tighten your seatbelt bolts once finished with this portion of the install.

\*You should be able to complete this portion of the install while leaving the seats installed, if you have factory seats. Some aftermarket seat sets may require you to uninstall and then reinstall the set, in order to properly place the mat kit in its desired location.

Now, mount the remaining glove box and storage components in their proper location.

**\*\*For extra adhesion between mat and surface, try using some type of primer to prep surface prior to application of mat!**

**STEP 5.**

You're all finished! Now get out there and enjoy your next ride!

\*Red mats are known to fade over time if constantly exposed to sunlight. No warranty will be offered against fading for red mat options\*

\*\*mat kits are marine-grade quality, weather-proof mats that can be vacuumed and washed with mild soap. Patent Pending. For a more in-depth description of the product/material please visit our website or contact us.\*\*

*If you have any questions, comments, or concerns about this product, please contact Twist Dynamics directly at: (941) 323 – 5912 or email: [sales@twistdynamics.com](mailto:sales@twistdynamics.com) and we will be happy to help.*