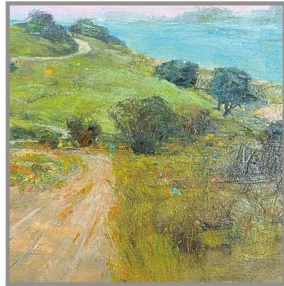


WORKS BY
ANDY BRAITMAN



"ISLAND BLUFF"
24X54 OIL



"WINTER WETLAND"
40X60 OIL



"PRYOR'S GARDEN III"
54X54 OIL



"PRYOR'S GARDEN VI"
54X24 OIL



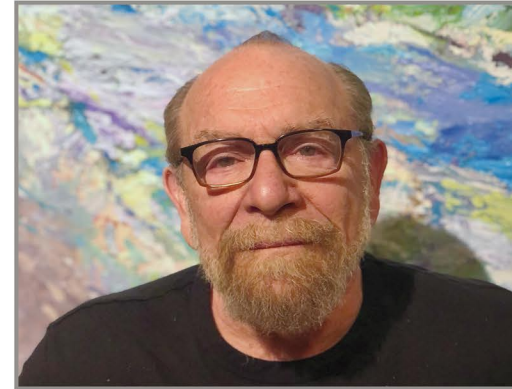
"PALETTE STUDY II"
10X8 OIL



"TANGERINE"
40X60 OIL

WWW.LEPRINCE.COM

LEPRINCE
FINE ART



Andy Braitman - Andy was selected to participate in the prestigious Maryland Biennial Juried Exhibition at the Charles Museum of Art in Baltimore as a young artist. He was later chosen by Nancy Reagan as one of America's Leading Artists, along with other notable artists such as Frank Stella and Andrew Wyeth, and asked to contribute a decorated Easter egg to the White House which is now on display at the Smithsonian Institute Castle. His work has been featured in one-man and group shows throughout the United States. Andy is a recipient of the Warton Award Grant for outstanding senior artist.

Born in Bethesda, Maryland. He attended the University of Maryland, and it was there that he discovered a true passion for art. He took every art class offered by the university. With the exception of a few part-time jobs, adjunct teaching positions at a few Baltimore area colleges, and six years as a visiting artist, Andy has supported himself solely through the sale of his paintings. In his visiting artist role, he has been guest lecturer at area colleges, conducted workshops, judged art competitions, and participated in public art projects.

WWW.LEPRINCE.COM

CHARLESTON, SC
183 & 184 KING ST, CHARLESTON, SC 29401 | (843) 452-3935

NAPLES, FL
639 8TH ST S, NAPLES, FL 34102 | (239) 571-2566