



KS 2000i S

START UP / SHUTDOWN



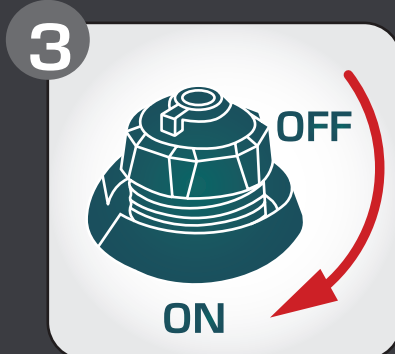
GENERATOR START UP



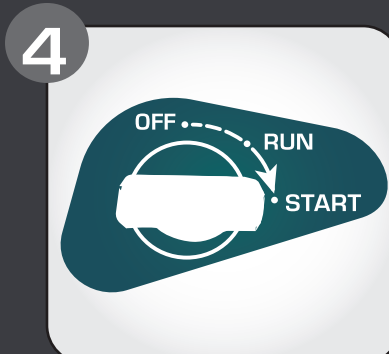
1 Add/check fuel



2 Add/check the oil level



3 Open vent (ON)



4 Turn air choke to START

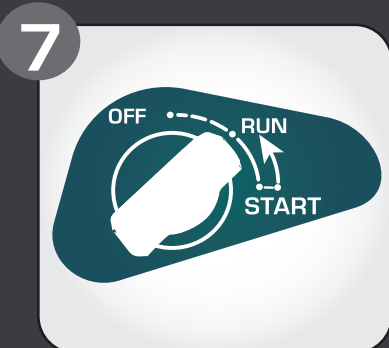


5 Pull up to the tension



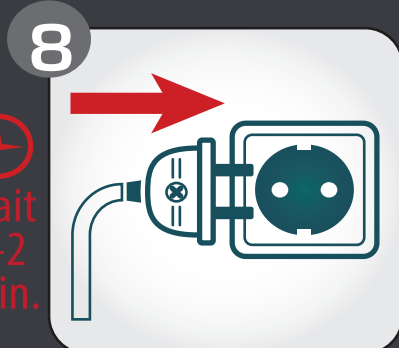
6 Pull sharply

⚠ READ MANUAL BEFORE START



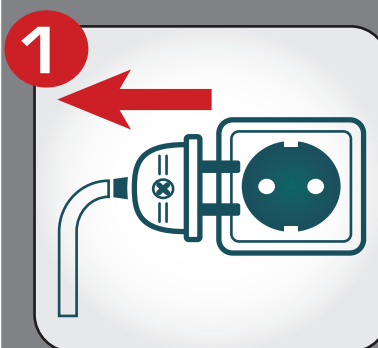
7 Turn air choke to RUN

⌚
Wait
1-2
min.



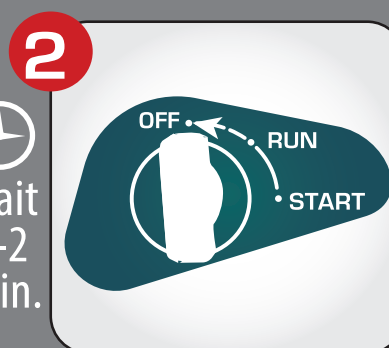
8 Connect electrical appliances

GENERATOR SHUTDOWN

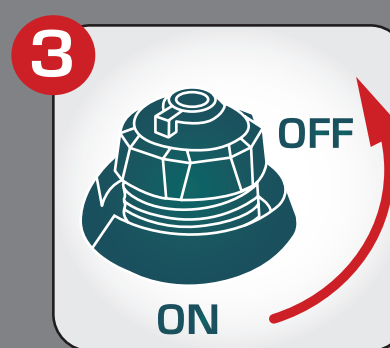


1 Disconnect electrical appliances

⌚
Wait
1-2
min.



2 Turn air choke to OFF



3 Cool down generator, then close vent (OFF)

