



# ASBL2D

## BIG GREEN EGG LARGE 4 DOOR CART



**Classic  
RUGGEDNESS**

MADE IN  
SHIPSHAWANA  
INDIANA, USA



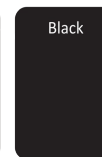
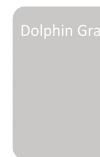
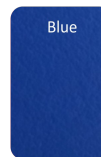
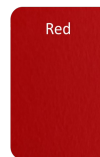
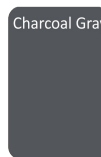
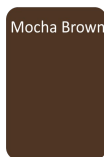
### Additional Accessories

Vinyl Grill Cover  
Silicone Fiberglass Mat  
Leg Kit

The **Alpha Series** is the original line of powder coated aluminum, all welded, outdoor grill carts by Wellspring. The finish is designed to last in all weather environments and can be cleaned up with mild soap and a soft cloth. Counter tops are the same material but, like all counter tops, require the use of hot plates or heat resistant protective mats. Marine grade Polyethylene doors are extremely durable and sturdy, providing weatherproof protection and security for various grilling equipment.

The frame and top are all fully welded and extremely solid. Combined with the 4" casters, it can be easily moved on a variety of outdoor surfaces. Once positioned, the 2 way locking casters also provide a stable and stationary work station.

### DOOR COLOR OPTIONS



### POWDER COAT OPTIONS



### HARDWARE OPTIONS

STAINLESS STEEL

BLACK POWDERCOAT



NOTE: Due to the inconsistency of many printers and computer screens, the color rendering of this document may be effected.

## Product Specifications

Grill	Big Green Egg Large
Weight	113 lbs.
Dimensions	53"L x 23"W x 34"H.
Packaged Weight	160 lbs.
Shipping Size	60"L x 32"W x 36"H.
Cabinet	All Welded 8 Ga. Aluminum Body.
Finish	UV Resistant Powder Coating. 140 degrees F. Maximum w/ Remelt Temp at 350 Degrees F.
Door Material	Marine Grade HDPE Polyethylene. Heat Deflection 66 psi, 183 Degrees F. Expands 1/4 inch at 300 Degrees F.
Door Seal	D Trim All Weather Stripping.
Latches	Polished 316 Stainless or UV Resistant Powder Coat.
Hinges	Polished 316 Stainless or UV Resistant Powder Coat.
Casters	4" Heavy Duty Full Locking.
Leg Kit	Adjustable Leveling, all Welded Powder Coated Aluminum.

