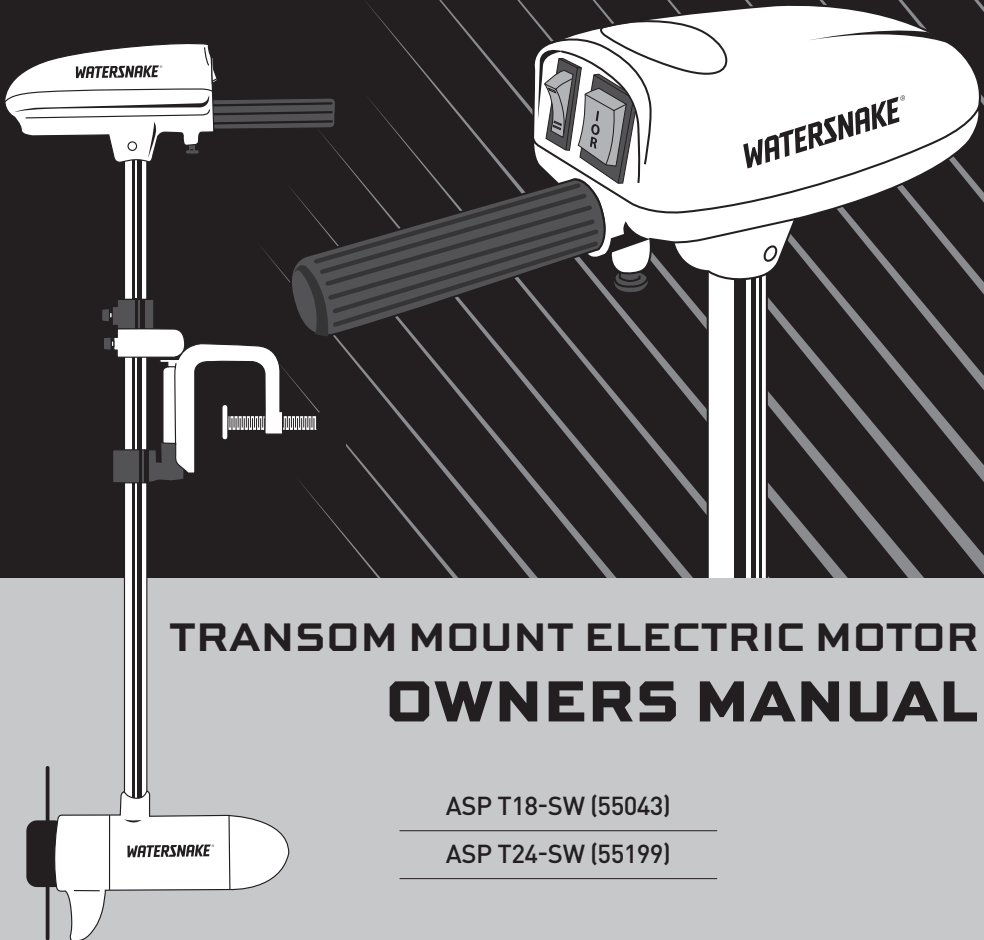




WATERSNAKE®

ASP TRANSOM MOUNT



TRANSOM MOUNT ELECTRIC MOTOR OWNERS MANUAL

ASP T18-SW (55043)

ASP T24-SW (55199)



BEFORE YOU BEGIN:

Trolling motors are high-current devices that require an ideal power supply. Follow these steps to avoid problems:

1

12V DEEP CYCLE OR 12V LIFEPO4 BATTERIES ONLY

MORE INFO ON PAGE 7

2

USE AN IN-LINE FUSE OR CIRCUIT BREAKER (NOT INCLUDED)

MORE INFO ON PAGE 8

3

BATTERY CAN BE CHARGED WHILE USING THE MOTOR ONLY IF VOLTAGE INPUT TO THE MOTOR IS EQUAL OR LESS THAN 14.5V

MORE INFO ON PAGE 9

4

EXTENDING THE BATTERY CABLES?

IMPORTANT INFO ON PAGE 9

5

SUGGESTED BATTERY SIZE:

MOTOR SIZE	BATTERY SIZE
18LB - 24LB	40AH OR LARGER
34LB	60AH OR LARGER
44LB	80AH OR LARGER
54LB - 65LB	100AH OR LARGER

WELCOME TO WATERSNAKE

Congratulations and welcome to a world of silent motoring.

Powerful yet silent, the Watersnake electric motors are built to suit all angling conditions. High quality materials, superior design and precision engineering make these motors long-wearing and reliable.

IMPORTANT

Please read this manual completely before starting installation and using the electric motor.

Disclaimer: The information provided in this Watersnake Motor Manual is correct at time of printing. For the most up to date information, check for the latest version on our website at <https://www.watersnake.com.au/pages/watersnake-user-manuals>

CONTENTS

KNOW YOUR BOAT 4

FEATURES OF YOUR MOTOR 5

INSTALLATION

PRE INSTALLATION CHECKLIST 6

BATTERY AND POWER 7

 Best practices and battery type 7

 Inline fuse or circuit breaker 8

 Extending battery leads 9

 Battery charging 9

 Connecting your motor to the battery 10

ATTACHING THE PROPELLER 11

ATTACHING THE MOTOR TO YOUR BOAT 12

USING THE MOTOR

PRE USE CHECKLIST 12

TILTING YOUR T24 ASP MOTOR 12

DEPTH ADJUSTMENT 13

STEERING COUNTER-FORCE 13

HEAD UNIT AND SPEED CONTROL 14

RECOMMENDATIONS WHEN USING YOUR MOTOR 15

AFTER EVERY USE 15

MOTOR MAINTENANCE AND STORAGE 16

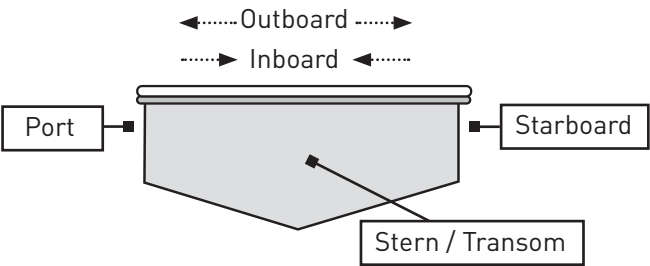
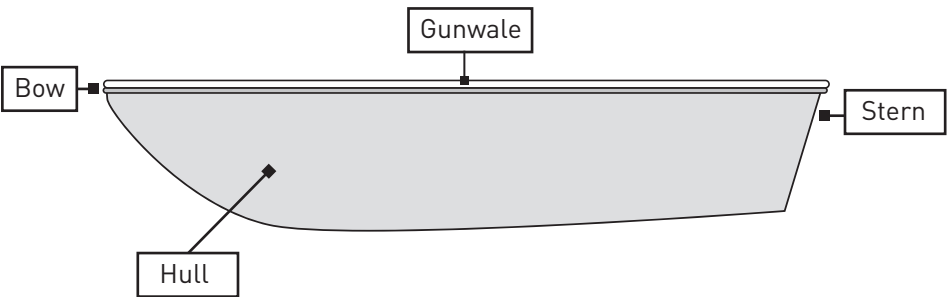
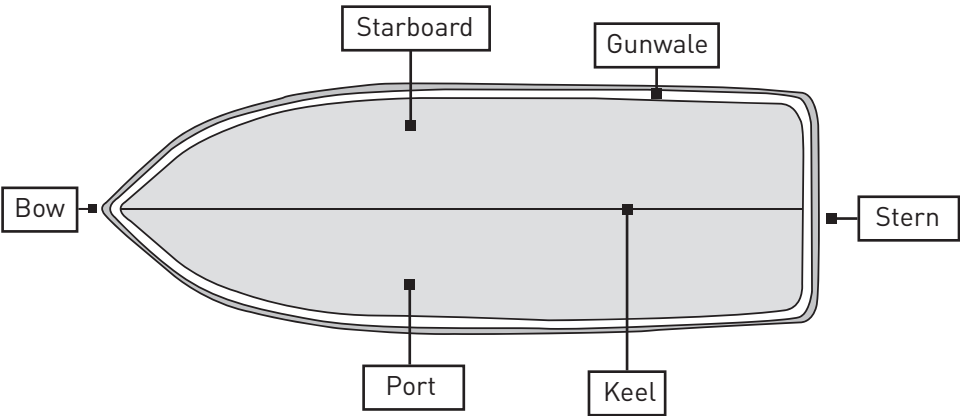
TROUBLESHOOTING 17

OPTIONAL ACCESSORIES 18

MOTOR SPECIFICATIONS 19

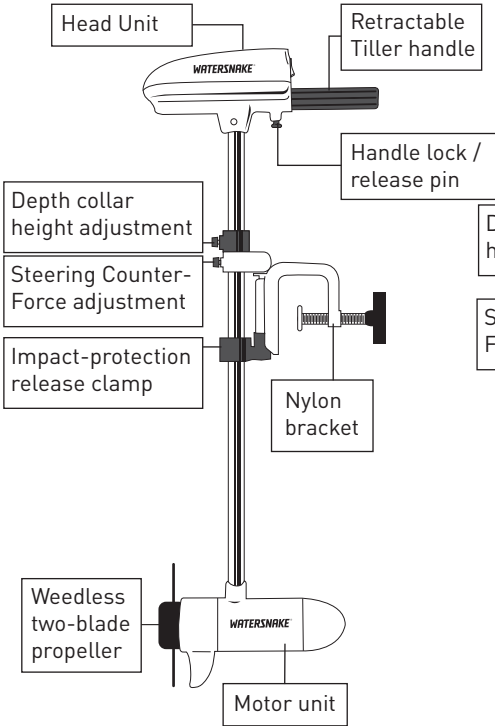
MOTOR SCHEMATICS AND PARTS LISTS 20

KNOW YOUR BOAT

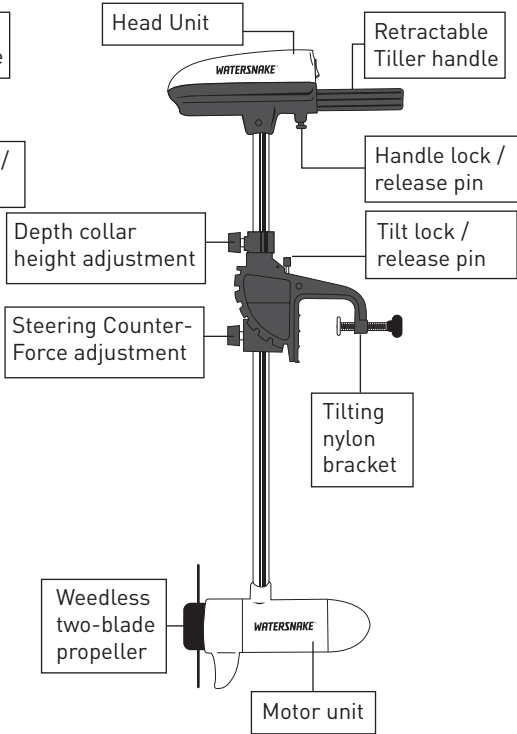


FEATURES OF YOUR MOTOR

ASP T18



ASP T24



Please note: the ASP T18 model does not have a tilting feature.

PLEASE NOTE: Specifications are subject to change without notice. Diagram of motor is for reference only and may be different from your actual motor.

INSTALLATION

PRE INSTALLATION CHECKLIST

1. Familiarise yourself with the user manual and the various parts of your Watersnake motor.
2. Select desired mounting location on boat/kayak.
3. 12V deep cycle or 12V LiFePO4 battery (your Watersnake motor **IS NOT** designed for use with car / truck /motorcycle type batteries) – for more information about appropriate batteries for your Watersnake motor, refer to page 7.
4. Check battery cable length in relation to location of your 12v deep cycle or 12V LiFePO4 battery. If extension to battery cable is required, refer to table on page 9. NOTE – if extending battery cable, ensure that the circuit breaker remains in place on the positive wire.



PLEASE NOTE:

TERNARY LITHIUM BATTERIES MUST NOT BE USED WITH THIS WATERSNAKE MOTOR. Refer to information on page 7.

THE BELOW INFORMATION IS FOR THE USA ONLY.



WARNING: This product can expose you to chemicals including Lead and Lead Compounds, which is known to the state of California to cause Cancer, Birth Defects or other reproductive harm. For more information, go to **www.P65Warnings.ca.gov**.

BATTERY AND POWER



CAUTION: Please read the following information before you connect your electric motor to your battery.

BEST PRACTICES

INSTALLING AND CONNECTING YOUR MOTOR

1. Your Watersnake motor is designed to be powered by a 12v deep cycle or LifePO4 battery that should output no more than 14.5v. If the voltage input to your Watersnake motor exceeds 14.5v it may damage the sensitive electronics and void your warranty. A dedicated battery system is preferable. Do not connect other items like fish finders or lighting to the trolling motor battery. **If you are unsure about the voltage output of your battery, contact your battery supplier or consult a marine auto electrician.**
2. This Watersnake motor is compatible with a battery system that is being charged by an alternator or solar system, so long as the voltage input to the Watersnake motor does not exceed 14.5v whilst the battery is being charged.
3. Route the wiring from the battery to the trolling motor on an alternate route or path to other wiring on the boat. If possible, it is preferable the wire is fitted to the opposite side of the boat to other wiring.
4. If you have to extend the wiring to connect the motor please review the extending battery leads section of the manual (page 9) so you fully understand this process.
5. This trolling motor requires a circuit breaker or inline fuse to protect the motor. See page 8 for more information.

BATTERY TYPE

USE A 12 VOLT DEEP CYCLE OR A 12V LIFEPO4 BATTERY

12V DEEP CYCLE BATTERY

Deep-cycle batteries deliver sustained power with low current draw over extended periods. They can be drained to low levels without developing a “memory” and can be fully recharged hundreds of times over their working lives. Do not use a standard car, truck or marine batteries (called a cranking battery). They are designed to provide a pulse of “cranking power” over a short period, can develop a “memory” preventing complete recharge and can produce current surges that may damage sensitive electronic components on your Watersnake.

LITHIUM BATTERIES



TERNARY LITHIUM BATTERY WARNING

Ternary Lithium batteries must not be used with this Watersnake motor as their voltage output is too high.

BATTERY AND POWER CONTINUED

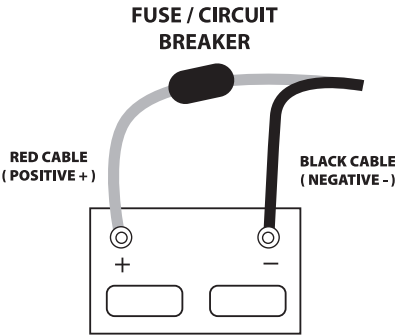
12V LIFEPO4 LITHIUM BATTERY

Lithium Iron Phosphate (LiFePO₄) is the safest lithium battery type. We recommend doing your research on a LiFePO₄ battery before purchasing to make sure you are purchasing from a reputable company and the battery has a maximum voltage output under 14.5V. There are many cheap lithium batteries on the market that can be harmful to your Watersnake motor.

INLINE FUSE OR CIRCUIT BREAKER

An inline fuse or circuit breaker is required when connecting your Watersnake Asp motor to the battery. This is a connection that joins the motor battery cable to the battery and protects the motor by shutting off power in the event of an overload or short circuit.

CIRCUIT BREAKER EXAMPLE



12V DEEP CYCLE OR LIFEPO4 LITHIUM BATTERY

SUGGESTED FUSE OR CIRCUIT BREAKER SIZE

Asp T18	20A
Asp T24	25A

EXTENDING BATTERY LEADS

The longer your battery cable needs to be, the thicker it needs to be to avoid damaging voltage drop. The supplied cable has the correct wire gauge (thickness) for its length. But if you need to extend the length by more than 30%, you will need to replace the existing cable completely with a new longer thicker cable. This means the entire cable will be the correct wire gauge for the new length. See below to find the correct wire gauge for your motor thrust and required cable length. Only use twin-sheathed tinned cable.

MOTOR MODEL	MAX AMP DRAW	WIRE EXTENSION LENGTH / WIRE GAUGE FOR ENTIRE CABLE (American Wire Gauge - AWG) Note: Lower AWG# is thicker wire.		
Asp T18	15A	1 Metre / 12AWG	1-3 Metres / 10AWG	3-5 Metres / 10AWG
Asp T24	20A	1 Metre / 12AWG	1-3 Metres / 10AWG	3-5 Metres / 8AWG

Note: The above table is intended as a guide only. Your local electrical supplier will be able to advise in greater detail based on your particular set up and requirements.

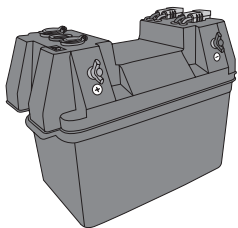
BATTERY CHARGING

Charging a battery while it is powering the motor will increase the voltage delivered to the motor. This motor can be powered by a charging battery (e.g. charging with an alternator or solar panels) as long as the voltage it receives does not exceed 14.5 volts. Exceeding 14.5 volts will potentially damage electrical components in the motor and is not covered by warranty.

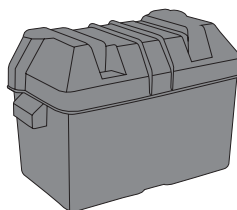
When you are off the water and are charging your battery at home for long periods of time via a 240v or 110v AC charger we recommend you disconnect the motor from the battery.

AVOID USING STORE-BOUGHT BATTERY BOXES WITH BUILT-IN CIRCUITRY

Battery Boxes use low quality electrical components that cannot handle the high current loads that trolling motors draw. We recommend connecting your Watersnake motor directly to a deep cycle or LiFePO4 battery using the provided battery leads.



**BATTERY BOX WITH
BUILT IN CIRCUITRY.
DO NOT USE!**

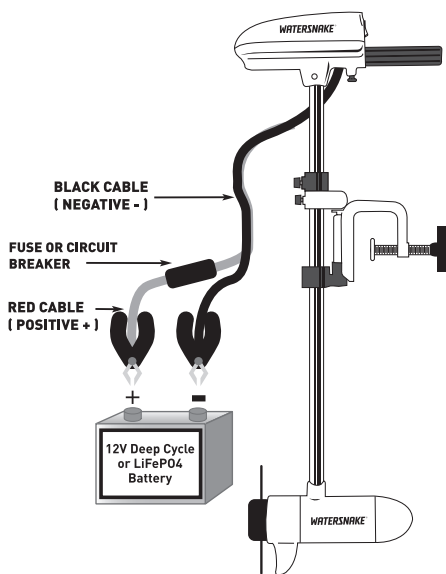


**SIMPLE BATTERY
BOX WITH NO
CONNECTIONS
OK TO USE!**

CONNECTING YOUR MOTOR TO THE BATTERY

All Watersnake wiring connections should conform to best marine standards. Soldered, sealed and heat-shrink protected. If you doubt your ability to produce quality waterproof connections or lack the equipment, consult a marine technician or auto electrician.

- Your Watersnake comes factory-fitted with a standard length of twin flex wiring with alligator clips to attach to the battery.
- Before connecting the motor's cables to the battery terminals, ensure all switches are in the OFF position and stand clear of the propeller.
- Connect the red cable to the positive (+) terminal and the black cable to the negative (-) terminal, making sure the terminals are clean before doing so. A clean connection will minimise power wastage and give you maximum power from the battery.
- The voltage input must be 14.5V or lower. Voltage input above 14.5V will damage the motor and void the warranty.
- If you intend to charge your battery via an alternator or solar panel, it is important that the battery voltage output does not exceed 14.5v. If you are unsure of the voltage your battery will output, consult a marine technician or auto electrician.

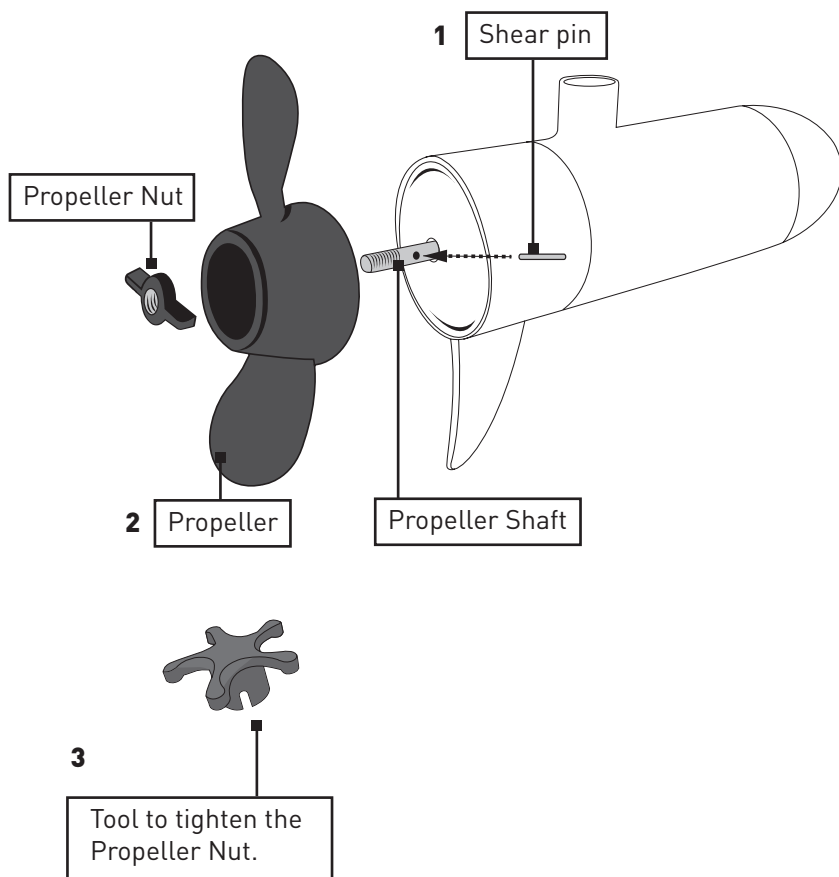


ATTACHING THE PROPELLER



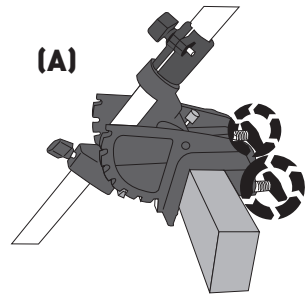
WARNING: Before doing anything with the propeller, ensure the cables from the electric motor to the battery are disconnected.

1. Place the Shear Pin in the hole of the Propeller Shaft as shown below.
2. Note on the inside of the Propeller there is a groove for the Shear Pin to slot into. Place the Propeller over just the end of the Propeller Shaft, then rotate the propeller to align the groove to the Shear Pin. Push the Prop fully onto the Shaft, making sure the Pin sits in the groove.
3. While holding the Propeller, tighten the Propeller Nut firmly with the provided tool.

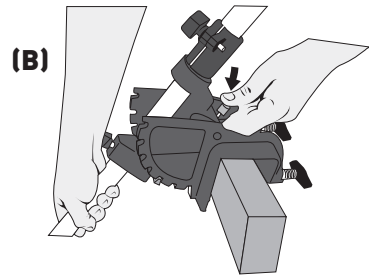


ATTACHING THE MOTOR TO YOUR BOAT

Place the motor's mounting bracket over the centre of your boat's transom or your chosen mounting position on your kayak. Tighten both mounting bolts securely while taking care not to over-tighten. **(A) Note:** if the motor is on the side of your kayak, position it as close as possible to the kayak hull. This minimises unwanted turning.



TILTING THE ASP T24 MOTOR: The Asp T24 model has a bracket that can adjust the angle of the the motor. To adjust the motor angle, hold the motor head with one hand and depress the positioning pin at the top of the mounting bracket with your other hand. While pressing the positioning pin, move the motor to your desired angle. Release the pin and ensure the tilting mechanism locks in securely. **(B) Note:** The Asp T18 model does not have a tilt function.



PLEASE NOTE: Watersnake Distribution Pty Ltd accepts no liability for personal injury or property damage caused while mounting, deploying or stowing this motor.

USING THE MOTOR

PRE-USE CHECKLIST – CHECK BEFORE EACH USE

- Ensure that your Watersnake motor is securely attached to your boat.
- Fully charged 12v deep cycle or 12V LiFePO4 battery (your Watersnake motor is not designed to be used with a car / truck / motorcycle type or Ternary Lithium battery).
- Check battery cable for any signs of damage or exposed wiring.
- Check battery terminals for any signs of corrosion or debris.
- Check fuse assembly / circuit breaker – clean if any signs of corrosion or debris. Replace fuse if necessary. (If your motor is equipped with one.)

NOTE: Please ensure this Watersnake motor is not your only means of propulsion. Please follow the marine safety guide lines set by your state or country of use.

BATTERY CHARGING

Please refer to battery charging section on page 9.



CAUTION: Please keep your fingers and hands away from all hinge points and the propeller at all times.

DEPTH ADJUSTMENT

The depth of the motor in the water can be adjusted. Hold the motor shaft with one hand, loosen the Depth Collar Adjustment Screw and set the motor to the desired depth, then retighten the adjusting screw of the depth collar securely **(A)**.

The motor should be just deep enough in the water so air does not get sucked down to the propeller during operation (called ventilation). This reduces the motor efficiency.

STEERING COUNTER-FORCE

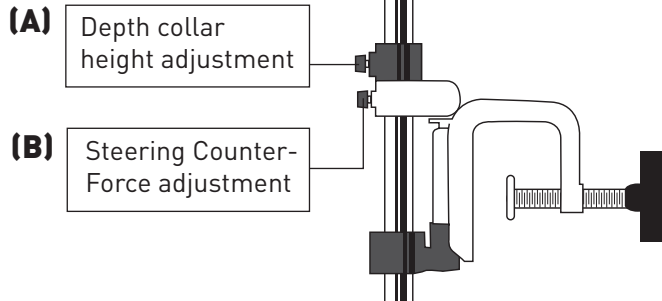
The motor is steered by pivoting the Tiller Handle side-to-side. You can fine-tune the steering counter-force so the motor will stay in the direction you are aiming without the need for continual correction:

Adjust the amount of steering counter-force by loosening or tightening the counter-force bolt so it is just tight enough to maintain the same direction **(B)**.

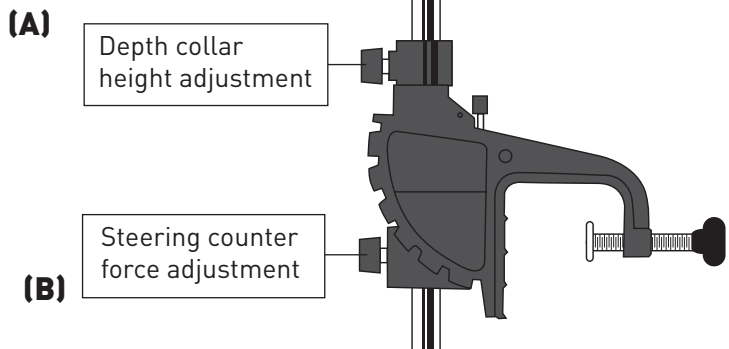
STOWING

When your Watersnake motor is not in use always stow and store it properly.

ASP T18 BRACKET

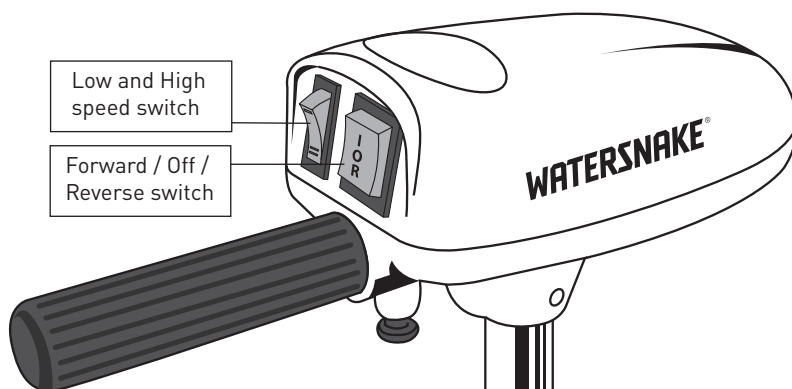


ASP T24 TILTING BRACKET

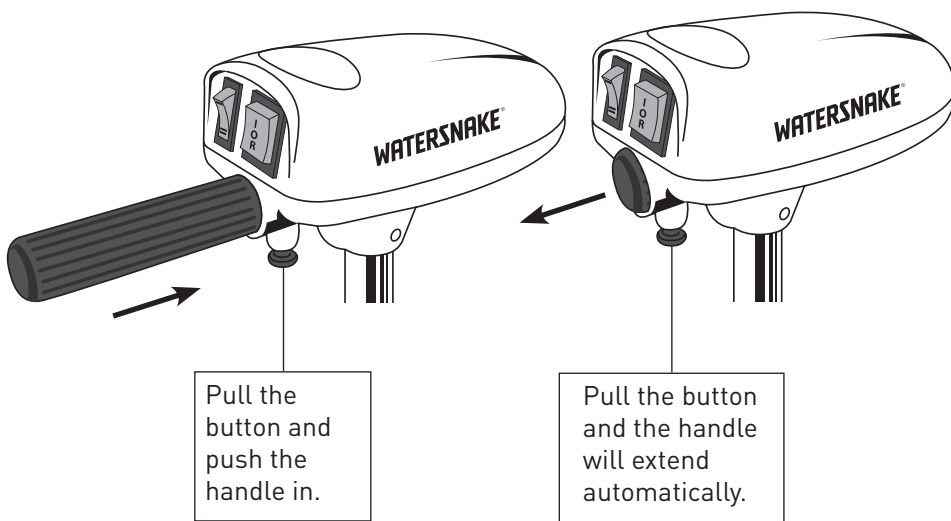


HEAD UNIT & SPEED CONTROL

The Head Unit controls are easy to use. There is a switch for Forward, Off and Reverse (I o R) and a switch for Low (-) or High speeds (=).



The Tiller Handle on the motor head is stowable and extends with the pull of a button. This makes the motor more compact and easier to store away when not in use.



RECOMMENDATIONS

WHEN USING YOUR WATERSNAKE MOTOR IN THE WATER

Upon connecting your battery to your motor, and before setting off in your boat, make sure that your trolling motor is mounted correctly and stowed securely. Of course once you engage your Watersnake motor for use make sure that it is in the right place, not too low or too high. Once you are in deep water, you should make sure that you gradually increase the speed of your trolling motor, do not accelerate it up to full speed right away. It is recommended not to run your trolling motor out of water for long periods of time.

AFTER EVERY USE

- Disconnect the motor from the battery.
- Recharge the battery as soon as possible.
- **DO NOT PRESSURE WASH, EVEN AFTER FRESHWATER USE.**
- Wipe your motor down with a wet rag. Concentrate on areas where salt, dirt and weed fragments are likely to lodge – propeller, motor housing, alloy shaft, depth collar and exposed parts of the mount assembly.
- Wipe these areas with a cloth soaked in warm soapy water and allow to dry.
- Apply a light coating of a non-staining silicone, petroleum-based or lanolin spray to protect and lubricate exposed parts. Wipe over with a soft, dry cloth.
- Store your Watersnake motor **DISCONNECTED** from its battery.
- If the boat is stored outdoors, remove the Watersnake motor and store securely indoors in a cool, dry place.
- If the Watersnake motor is permanently mounted to the boat outdoors, consider protecting it from harsh sunlight and the elements with a tarpaulin or other cover.

MAINTENANCE

MAINTENANCE PERIODICALLY DURING THE SEASON

- Disconnect motor from battery. Inspect battery terminals and cables for signs of corrosion. Remove buildup with a small wire brush and treat with anti-corrosion spray.

END OF SEASON, LONG-TERM STORAGE

- Disconnect motor from battery.
- Inspect battery terminals and cables for signs of corrosion. Remove buildup with a wire brush and treat with anti-corrosion spray.
- Remove motor from boat and store in a cool, dry place away from temperature extremes.

TROUBLESHOOTING

QUICK REFERENCE GUIDE

A significant number of issues can be caused by a disruption of power supplied to your Watersnake motor. Careful inspection of your 12v deep cycle battery, wiring and fuse / circuit breaker set up should be completed before assuming that there is a fault with your motor.

NO POWER / REDUCED POWER

- Check that battery connection has not been reversed (reversed polarity).
- Check that your 12v deep cycle or LiFePO4 battery is fully charged (+ 12v).
- Check terminals / connections are secure and not loose.
- Check terminals / connections / fuse or circuit breaker for any signs of damage, corrosion or build up of debris.
- If the battery cable has been extended but not replaced, you may be experiencing damaging voltage drop. Check the table on page 9 to see if you have the correct gauge wire for the length of cable extension.
- With the battery disconnected remove propeller and check for any build up of fishing line / weed or any other debris.
- With the battery disconnected check that propeller pin (shear pin) is in place.
- Armature or magnet cracked or dislodged – grinding noise will come from motor (Contact the Watersnake distributor in your region.)

NOISE OR VIBRATION COMING FROM MOTOR

- With the battery disconnected check that propeller is securely tightened and shear pin is in place. Remove propeller and check for any build-up of fishing line / weed or any other debris. Rotate the propeller 180° and then recheck for vibration.
- Check that your 12v deep cycle or LiFePO4 battery is fully charged (+ 12v).

STILL HAVING MOTOR ISSUES?

More information like wiring diagrams, spare parts and motor repair videos can be found on our Watersnake motor support webpage:

<https://www.watersnake.com.au/pages/electric-motor-servicing>

For more help you can also contact the Watersnake distributor for your region. (Please see the back cover.)



Scan the QR code to go to the Watersnake support page.

WATERSNAKE MOTOR ACCESSORIES

SOLD SEPARATELY

(SEE YOUR NEAREST DEALER FOR MORE INFORMATION)

55000

Watersnake Two-Blade Mini Propeller Replacement (18lb, 24lb)



Watersnake Propeller Kits contain a propeller, nut and shear pin. It is recommended you keep a spare propeller on your boat at all times.



55550

Lower Motor Unit Brush Kit for Asp (18lb & 24lb)

Contents:

- 2 Springs.
- 2 Brushes
- 2 Holders
- 2 Screws

PLEASE NOTE:

Spare parts may not be available in all areas. Please check with your local stockist. Online ordering available please see back page for details.

MOTOR SPECIFICATIONS

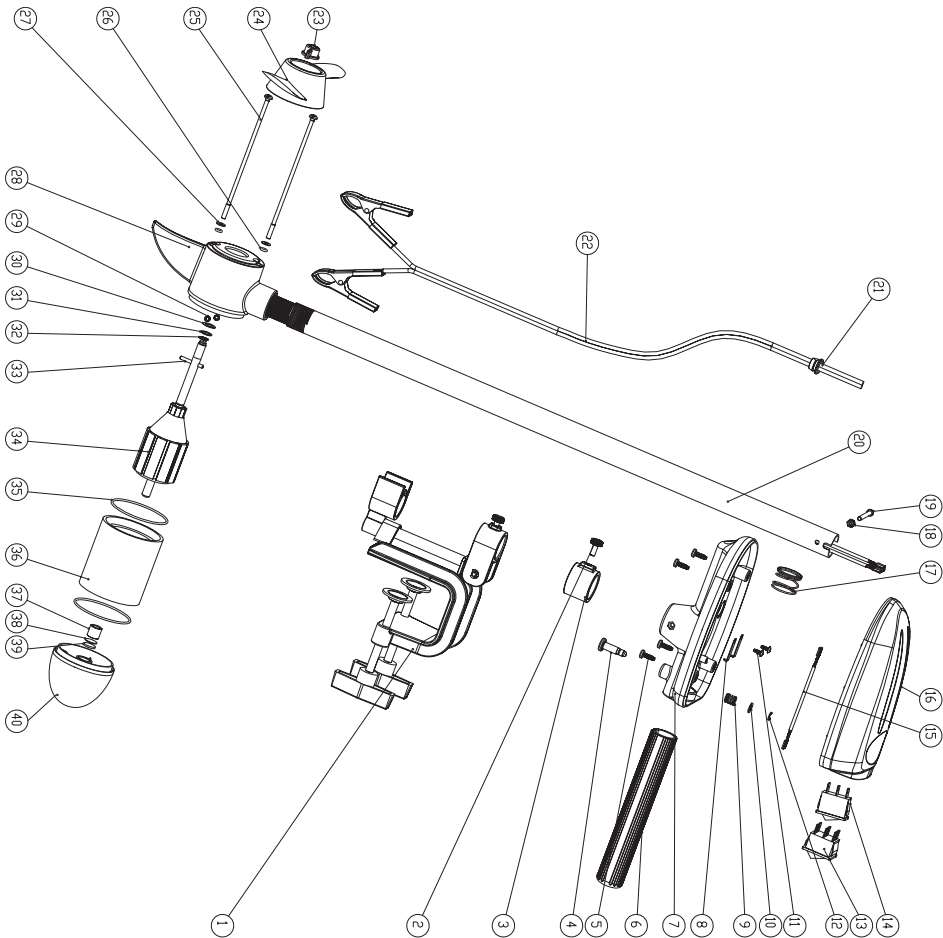
MODEL	CODE: 55043	NAME: ASP T18-SW (White Saltwater)
VOLTAGE (V)	12v	
MAX.THRUST (LB)	18lb	
SHAFT LENGTH (IN)	24"	
MIN. / MAX. AMP DRAW (A)	MIN.7A MAX.15A	
MAX. PROP RPM (NO LOAD)	1400rpm	
SPEEDS	2 FORWARD AND 2 REVERSE	
PROPELLER	2 BLADE	
MOUNTING BRACKET	NON-TILTING TRANSOM	
REQUIRED BATTERY	12v DEEP CYCLE or LiFePO4	
RECOMMENDED BATTERY SIZE (AH)	40 AMP HOUR OR LARGER*	
BATTERY CABLE GAUGE	14AWG	
MOTOR WEIGHT	2.35kg	

MODEL	CODE: 55199	NAME: ASP T24-SW (White Saltwater)
VOLTAGE (V)	12v	
MAX.THRUST (LB)	24lb	
SHAFT LENGTH (IN)	24"	
MIN. / MAX. AMP DRAW (A)	MIN.9A MAX.20A	
MAX. PROP RPM (NO LOAD)	1700rpm	
SPEEDS	2 FORWARD AND 2 REVERSE	
PROPELLER	2 BLADE	
MOUNTING BRACKET	TILTING TRANSOM	
REQUIRED BATTERY	12V DEEP CYCLE or LiFePO4	
RECOMMENDED BATTERY SIZE (AH)	40 AMP HOUR OR LARGER*	
BATTERY CABLE GAUGE	14AWG	
MOTOR WEIGHT	3.1kg	

*** NOTE** - this is to be used as a guide only. Check with your battery supplier to confirm required size of 12 volt Deep Cycle or LiFePO4 battery that will be appropriate for your situation.

SCHEMATIC & PARTS LIST 55043 ASP T18-SW

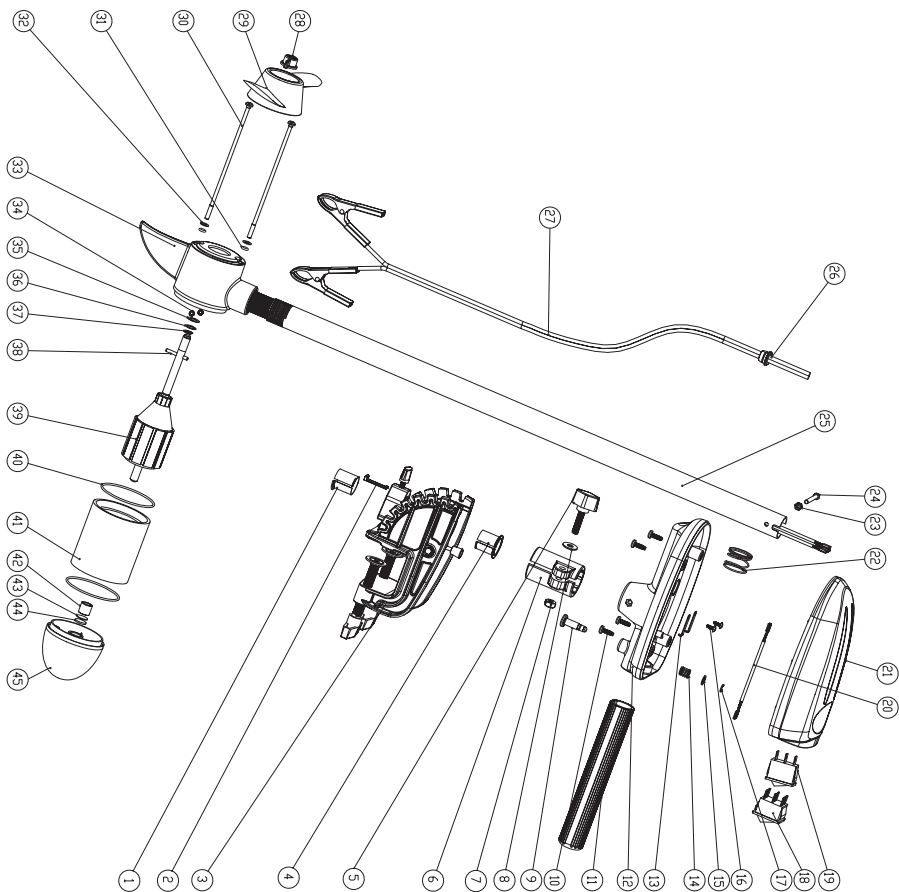
55043 T18-SW



Part No.

40	HP6,171,041.00	front cover	1
39	HP8,940,672.00	gasket	1
38	HP8,940,671.00	gasket	1
37	HP8,251,004.00	oil bearing	1
36	HP6,652,007.00	stator assy	1
35	HP8,662,074.00	O-sealing ring	2
34	HP6,656,014.00	rotor assy	1
33	HP8,264,157.00	pin	1
32	HP8,245,079.00	C-retaining ring	1
31	HP8,940,138.00	washer	1
30	HP8,940,266.00	washer	1
29	HP8,382,154.16	spring	2
28	HP6,171,043.00	back cover assy	1
27	HP8,940,673.00	washer	2
26	HP8,662,073.00	O-sealing ring	2
25	HP8,926,035.45	The connecting rod bolt	2
24	HP8,325,004.00	prop	1
23	HP8,939,001.00	prop nut	1
22	HP6,647,006.00	main battery cable	1
21	HP8,667,025.00	Retaining clip	1
20	HP8,626,041.27	shaft	1
19	HP8,902,213.00	bolt	1
18	HP8,379,059.00	lock nut	1
17	HP8,382,152.08	spring	1
16	HP8,076,055.00	top cover	1
15	HP6,647,007.00	wire assy	1
14	HP7,330,006.00	Wave switch	1
13	HP7,330,005.00	Wave switch	1
12	HP8,245,078.45	C-retaining ring	1
11	HP8,903,023.00	Screw	2
10	HP8,940,269.00	washer	1
9	HP8,382,153.08	spring	1
8	HP8,263,088.00	sheet metal	2
7	HP8,076,056.00	bottom cover	1
6	HP8,621,034.00	handle	1
5	HP8,903,059.00	bolt	4
4	HP8,264,360.00	pin	1
3	HP8,242,123.00	depth adjustment collar	1
2	HP8,904,059.00	hangar assembly	1
1	HP6,152,009.00	Hangar assembly	1

SCHEMATIC & PARTS LIST 55199 ASP T24-SW



Part No.

45	HP6,17104,100	front cover	1
44	HP8,940,672,00	gasket	1
43	HP8,940,671,00	gasket	1
42	HP8,251,004,00	oil bearing	1
41	HP6,652,010,01	stator assy	1
40	HP8,662,071,00	O-seeding ring	2
39	HP6,656,018,00	rotor assy	1
38	HP8,654,157,00	pin	1
37	HP8,245,079,00	C-reelthing ring	1
36	HP8,940,138,00	washer	1
35	HP8,940,266,00	washer	1
34	HP8,382,154,16	spring	2
33	HP6,17104,300	lock cover assy	1
32	HP8,940,673,00	washer	2
31	HP8,662,073,00	O-seeding ring	2
30	HP8,926,042,45	The connecting rod bolt	2
29	HP8,325,004,00	prop	1
28	HP8,939,001,00	prop nut	1
27	HP6,647,006,00	main battery cable	1
26	HP8,667,025,00	Retaining clip	1
25	HP8,626,041,24	shaft	1
24	HP8,902,219,00	bolt	1
23	HP8,379,059,00	lock nut	1
22	HP8,382,152,08	spring	1
21	HP8,076,055,70	top cover	1
20	HP6,647,007,00	wire assy	1
19	HP7,330,006,00	Wave switch	1
18	HP7,330,005,00	Wave switch	1
17	HP8,450,78,00	C-reelthing ring	1
16	HP8,903,023,06	Screw	2
15	HP8,940,269,00	washer	1
14	HP8,382,153,08	street metal	1
13	HP8,263,088,00	bottom cover	2
12	HP8,076,056,70	handle	1
11	HP8,621,034,00	bolt	1
10	HP8,903,059,00	nut	4
9	HP8,264,360,00	pin	1
8	HP8,940,313,00	washer	1
7	HP8,379,073,00	nut	1
6	HP8,245,032,00	depth adjustment collar	1
5	HP6,480,014,00	bushing	1
4	HP8,210,459,00	Handle assembly	1
3	HP6,152,020,00	Locking block	1
2	HP8,602,012,10	bushing	1
1	HP8,210,500,00		1

No.	DRAWING NO.	PART NAME	QTY
-----	-------------	-----------	-----

55199 T24-SW

THE BELOW INFORMATION IS FOR THE USA ONLY.



Watersnake Limited One Year Warranty (USA)

All watersnake products are covered by a one year Limited Warranty covering faults in workmanship and materials from the date of original retail purchase. The purchaser should return the defective product postage prepaid, insured, with proof of purchase (a dated sales receipt) and the reason for return to the address below:

**Innovative Procurement
124, Opportunity Rd, Camdenon,
MO 65020, United States
PH: +1 573-346-7447**

Online Store for spare parts and accessories: watersnakeusa.com

Note: Residents of Hawaii, Alaska, and U.S. territories shall be billed for return shipping via registered priority mail. Watersnake will repair or replace the product at its option and return direct to purchaser.

Terms

This Limited Warranty does not cover Watersnake products damaged due to abuse, misuse, normal wear, or excessive wear caused by neglect of cleaning and lubrication required or general service requirements due to owner's failure to provide reasonable and necessary maintenance.

This Warranty does not extend to products which are put into commercial use. Commercial use is defined as any work or employment related use of the product which generates income.

Watersnake products not covered by this Limited Warranty may be repaired at a nominal charge to the purchaser, provided parts are available and the product is returned with return postage prepaid.

The warranties described herein shall be the sole and exclusive warranties granted by Watersnake and shall be the sole and exclusive remedy available to the purchaser. Correction of defects, in the manner and time period described herein, shall constitute complete fulfillment of all liabilities and responsibilities of Watersnake to the purchaser with regard to this product, and shall constitute full satisfaction of all claims, whether based on contract, negligence, strict liability or otherwise. Watersnake shall not be liable or in any way responsible for any damages or defects caused by repairs or attempted repairs performed by anyone other than a Watersnake authorised service agent. Watersnake reserves the right to amend or change this Limited Warranty at any time. This Limited Warranty is non-transferable. The provisions of this Limited Warranty are in addition to, and not a modification of, or a subtraction from, the statutory warranties and other rights and remedies contained in any applicable legislation. To the extent that any provision of this Limited Warranty is inconsistent with any applicable law, such provision shall be deemed voided or amended as necessary, to comply with such law.

"ALL INCIDENTAL AND/OR CONSEQUENTIAL DAMAGES ARE EXCLUDED FROM THIS WARRANTY INSERT. IMPLIED WARRANTIES ARE LIMITED TO THE LIFE OF THIS WARRANTY. SOME STATES DO NOT ALLOW LIMITATIONS ON HOW LONG AN IMPLIED WARRANTY LASTS OR THE EXCLUSION OR LIMITATION OF THE INCIDENTAL OR CONSEQUENTIAL DAMAGES, SO THE ABOVE LIMITATIONS OR EXCLUSIONS MAY NOT APPLY TO YOU. THIS WARRANTY GIVES YOU SPECIFIC LEGAL RIGHTS, AND YOU MAY ALSO HAVE OTHER LEGAL RIGHTS THAT MAY VARY FROM STATE TO STATE."

For Your Records:

Model Number:.....

Serial Number:.....



DISTRIBUTORS

CONTACT INFORMATION

Full and up to date contact information can be found at:

www.watersnake.com.au

REGION/COUNTRY	DISTRIBUTOR	CONTACT
Asia Pacific		
Australia	Watersnake	+61 3 8789 7949
New Zealand	Brittain Wynyard	+64 9 306 7200
South Korea	Plady Co.	+82 10 9894 9938
USA		
USA	Innovative Procurement, LLC	+1 573 346 7447
Africa		
South Africa	Apex Walker	+27 11 4621 302
Europe		
Italy	Europesca Sport	+39 06 6500 2449
Sweden	Wiggler AB	+46 303 798 744
UK and Ireland	Dennet Outdoor	+44 0 2871 38 3033
Germany	World Fishing Tackle	info@wft.de

SPARE PARTS

CONTACT YOUR NEAREST DISTRIBUTOR FOR AVAILABILITY OF SPARE PARTS.

SPARE PARTS CAN ALSO BE PURCHASED ONLINE.

USA:

watersnakeusa.com

AUSTRALIA AND OTHER MARKETS:

anglerscentral.com.au

www.watersnake.com.au

Watersnake Distribution Pty. Ltd.
297-305 South Gippsland Highway
Dandenong South, Victoria 3175 Australia
ACN: 143 230 175

Watersnake® and Jarvis Marine® are registered
trademarks of Watersnake Distribution Pty. Ltd.

© Watersnake Distribution Pty. Ltd. All Rights Reserved.
Specifications are subject to change
without notice.