

TimeCess Beauty
Bioprogramming

HAIRBEAURON 3D Plus [STRAIGHT]

Safety Guide and
Operating Manual

HBRST3D-US



Thank you for purchasing the
HAIRBEAURON 3D Plus [STRAIGHT].
Please make sure to read this
manual in its entirety to ensure
proper use. Save this manual for
future reference.

CONTENTS

IMPORTANT SAFETY INSTRUCTIONS	1
RATINGS & SPECIFICATIONS	4
MAJOR PARTS	5
OPERATING INSTRUCTIONS	6
General Operation	
Basic Use	
Instructions for Storing Device	
Device Inspection	
Maintenance	
Overseas / International Use	
TROUBLESHOOTING	14
CUSTOMER SUPPORT & LIMITED WARRANTY	16

IMPORTANT SAFETY INSTRUCTIONS

READ ALL INSTRUCTIONS BEFORE USE

IMPORTANT SAFETY INSTRUCTIONS

When using electrical devices, especially when children are present, basic safety precautions should always be followed, including the following:

READ ALL INSTRUCTIONS BEFORE USE

KEEP AWAY FROM WATER

DANGER – As with most electrical devices, electrical parts are electrically live even when the switch is off.

To reduce the risk of death by electric shock:

1. After use, always turn off the device and unplug immediately.
2. Do not place or store the device where it can fall or be pulled into a tub or sink.
3. Do not use while bathing.
4. Do not place in or drop into water or any other liquid.
5. Do not store in a place with high humidity such as a bathroom, or a place where it may come into contact with water such as near a sink.
6. If the device falls into water, unplug it immediately. Do not reach into the water to retrieve the device.
7. Do not insert or remove the power plug with wet hands.
8. Do not immerse the device in water when cleaning.

WARNING – To reduce the risk of burns, electrocution, fire, or injury to persons:

1. The device should never be left unattended when plugged in.
2. Close supervision is necessary when the device is used by, on, or near children or people with certain disabilities. Do not use it on infants or pets.
3. Use this device only for its intended use as described in this manual. Only use attachments/accessories specified by the manufacturer.
4. Never operate this device if it has an excessively hot or damaged cord or plug, if the plug is not able to be firmly inserted into the electrical outlet, if it is not working properly, if it has been dropped or damaged, or if it has been dropped into water. Do not attempt to disassemble, repair, or modify the device. Contact the Bioprogramming Information Center immediately for further instructions/support.
5. Keep the cord away from heated surfaces. Do not damage, forcibly bend, pull, tie up in a bundle, place heavy objects on, pinch, or modify the power cord. During storage, do not wrap the power cord around the body of the device. If it becomes twisted during use, straighten it out prior to storage.
6. During and immediately after use do not directly touch the plates and/or the area around the plates. Please wait until the device has completely cooled down.

IMPORTANT SAFETY INSTRUCTIONS

READ ALL INSTRUCTIONS BEFORE USE

7. Do not store the device with small objects such as bobby pins or clips as they may get trapped inside the device.
8. Do not use outdoors or operate near aerosol (spray) products or other flammable materials such as alcohol, gasoline, paint thinner, petroleum-based solvents, or nail polish remover.
9. Do not use an extension cord with this device.
10. When pulling out the power cord, always grip the plug itself. Never pull it out by the cord.
11. Do not use this device for any purpose other than the styling of hair. Do not use it to dry any objects.
12. After use, do not leave the device with the power on.
13. To prevent fire, discoloration and/or warping of surrounding objects, always make sure that the device has completely cooled down before placing it next to or inside objects made of plastic that may melt due to excess heat.
14. Ensure that your fingers do not come into contact with the plates when gripping a section of hair.
15. Ensure that the plates remain at least 1½ in. from skin when in use. Caution is especially necessary near the bangs, roots of the hair (near the scalp,) and near the ears.
16. Only use the device with a 100-240V AC power supply.
17. The plates and the area around the plates (high-temperature area) are hot when in use. Do not let eyes or skin come into contact with the high-temperature area.
18. Do not place the device directly on any surface while it is hot or plugged in.
19. If the power cord is damaged, it must be replaced by the manufacturer, its service agent, or qualified service personnel to avoid a hazard.

WARNING – Do not use this device near bathtubs, showers, sinks, or other vessels containing water.

SAVE THESE INSTRUCTIONS

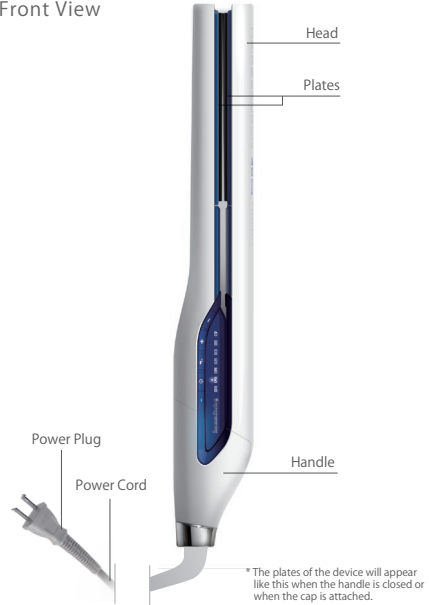
This device is for use on a circuit having a nominal rating of 100-240V and is factory equipped with a specific electric cord and plug to permit connection to a proper electric circuit. Make sure that the device is connected to an outlet having the same configuration as the plug. Do not modify the plug provided; if it does not fit the outlet, have the proper outlet installed by a qualified electrician. If the device must be reconnected for use on a different type of electric circuit, the reconnection should be made by qualified service personnel.

RATINGS AND SPECIFICATIONS

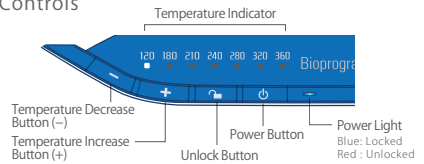
Product Name	HAIRBEAURON 3D Plus [STRAIGHT]
Model Name	HBRST3D-G-US
Power Supply	AC 100 - 240V 50/60Hz
Power Consumption	41W ±10%
Temperature	Approx. 120°F - 360°F
Size	11.6(H) × 1.2(W) × 3.4(D) in. (When in use)
	12.2(H) × 1.3(W) × 1.7(D) in. (With cap)
Weight	Approx. 1 lb./16.08 oz.
Safety Mechanism	Current fuse
Power Cord Length	9 ft.
Accessories	Cap × 1

MAJOR PARTS

Front View

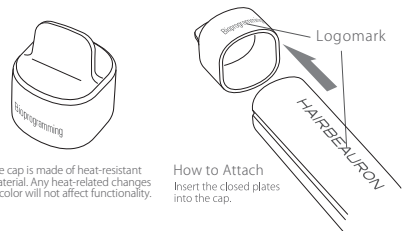


Controls



Storage Cap

Please attach the cap when storing the device.



* The cap is made of heat-resistant material. Any heat-related changes in color will not affect functionality.

How to Attach
Insert the closed plates into the cap.

Be careful to not touch the high temperature area immediately after use as it may be extremely hot. Doing so may lead to burns.

OPERATING INSTRUCTIONS

General Operation



[Before Use]

Brush your hair

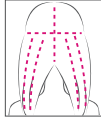
Thoroughly brush your hair to remove any tangles or loose strands and straighten the flow of your hair.

* Dry your hair before using this device.

* Do not apply any styling products to your hair.

Sectioning

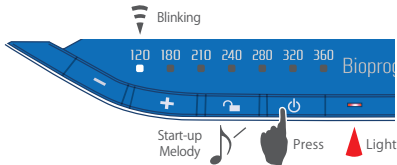
Divide your hair into upper and lower sections. Hold back sections of hair with clips, etc. The number of sections can be adjusted according to the volume of hair.



1 Insert power plug into outlet

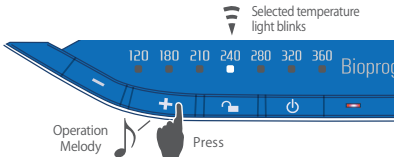
Make sure the power plug is firmly inserted into the outlet.

2 Press power button

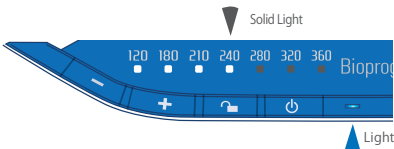


3 Select temperature (e.g. when using at 240°F)

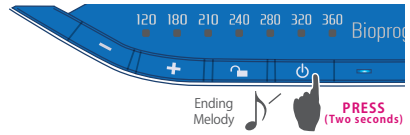
Raise temperature with the Temperature Increase Button (+), and lower temperature with the Temperature Decrease Button (-).



After 5 seconds the device will lock, and the temperature light will blink. Once the device has reached the selected temperature, the light switches to a solid light.



4 After use, press power button to turn off power



[After Use]

After use, turn the power OFF. **Make sure to remove the power plug** from the outlet.

Wait until the device has cooled before storing.

Temperature Memory Function

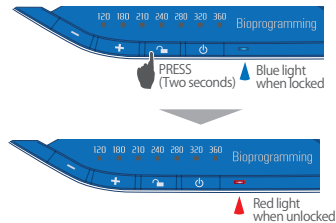
When the power is turned off and the device is still plugged in, it will stay at the last selected temperature. When the power is turned on again, it will automatically be set to that temperature. (* The temperature resets once the device is unplugged.)

Automatic Off Function

The device will automatically shut OFF after approximately 90 minutes. To resume use, press the power button again.

Automatic Lock Function

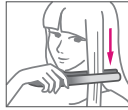
This device is equipped with an automatic lock function to prevent unintentionally changing the settings during use. If a setting change is not made within 5 seconds, the device will return to its locked state.



OPERATING INSTRUCTIONS

Basic Use

- 1 Turn on the power and select the desired temperature. Take a section of hair and clamp between the plates.



- 2 Smoothly slide the plates through the length of your hair to the ends as if brushing it.
 - * Prolonged use at high temperatures may cause the head (near the plates) to become hot, leading to burns.

For more information, please access the official website below:



bioprogramming.com

Danger

-  **Do not use hairspray or any other flammable styling product when using this device.**
(Risk of fire, electric shock, burns, etc.)

Warning



Caution:
Burns

During and immediately after use be sure that hands or skin (ears, forehead or neck etc.) do not come in contact with the highlighted area below.



When in use, make sure the high temperature area is kept more than 1 1/2 in. from skin.
Caution is especially necessary near the bangs, roots of the hair (near the scalp), and near the ears.

Do not open the plates near the skin.

Be careful that fingers etc. do not come into contact with the high temperature area when clamping a section of hair.

Instructions for Storing Device

Warning



Unplug

After use, always turn the device OFF and unplug it.
(Risk of combustion, fire etc.)



Caution:
Burns

The device will still be hot immediately after use. Please keep the device from coming into direct contact with hands or skin.



Prohibited

Do not place anything near the device such as plastic or any other material that may melt until the device has completely cooled. Do not immediately store the device while still hot.
(Risk of malfunction, discoloration or warping, etc.)

Do not wrap the power cord around the body of the device or handle. Do not pull excessively on the cord or allow it to get twisted.

Straighten out the cord prior to storage.
(Risk of disconnection, short circuit, electric shock, fire, etc.)



Do not store near children or pets.
(Risk of electric shock, burns, injury, or malfunction, etc.)



Do not use in the
shower or tub

Do not store the device in a place with high humidity such as a bathroom, or somewhere where it may get wet (near a bathtub or sink.)
(Risk of deterioration of insulation, electric shock, malfunction, etc.)

OPERATING INSTRUCTIONS

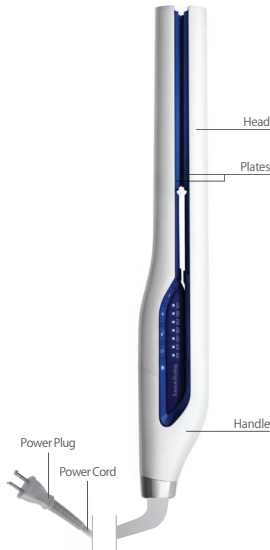
Device Inspection

Regular inspection is recommended for safe use.

*** Deterioration may happen over time due to heat, etc.**

In case of the following, immediately stop use and contact the Bioprogramming Information Center.

- Plates do not consistently heat up when power is turned on.
- Part of the power cord is abnormally hot.
- Power cord abnormalities, such as twisting, swelling or denting.
- Power plug is abnormally hot.
- Plates do not heat up when power is turned on.
- Set temperature cannot be maintained.
- Unusual sound when using.
- No melody or operating sound when pressing button.
- Light does not illuminate.
- Plates do not open.



Maintenance

Regular maintenance is recommended to keep your device in optimal condition.

- Always turn off the power and remove the power plug from the outlet. Wait until the device has completely cooled down before conducting any maintenance.
- If the body becomes dirty or covered with hair, debris, dust, and/or styling products, remove the foreign substances. Next wipe the exterior with a damp cloth that has been soaked in a neutral detergent diluted with water and well wrung out.



- * Using the device when it is dirty or covered with styling products may lead to discoloration, deterioration, or peeling of the coating. Regular cleaning is recommended.
- * Discoloration of the device may happen over time.

Danger



Unplug

Turn OFF the power and remove the power plug from the outlet before conducting maintenance.
(Risk of fire, burns, etc.)



Prohibited

Do not use alcohol, paint thinner, benzine, or nail polish remover, etc. on the device.
(Risk of malfunction, cracking, discoloration, etc.)

Do not attempt to wash the device.
(Risk of short circuit, electric shock, etc.)

OPERATING INSTRUCTIONS

Overseas / International Use



Required

Please confirm the following before taking this device overseas.

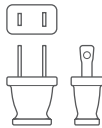


This device features Universal Voltage and can be used in any country which supports AC100-240V 50/60 Hz.

The HAIRBEAURON 3D Plus [STRAIGHT] plug is

A-2 TYPE

Voltage : 100-240V
Plug : A-2



Able to be used in any country/region with this type of electrical outlet.

When using the device in a region that does not have this type of outlet, use a commercially-available international plug adapter*.

* A plug adapter does not perform as a voltage converter.

* A plug adapter allows a device from one country to be plugged into a local outlet. They can be purchased at travel goods stores or electric appliance shops.

Plugs other than A-2 type:

C-2	B-3
BF (S-3)	O
	<small>Plugs with a ground connector can be used as well.</small>

Examples :

Italy	Commercially-available C-2 plug adapter required
Australia	Commercially-available O plug adapter required
Hawaii	No adapter necessary (can be used as-is)
Singapore	Commercially-available B-3 plug adapter, or BF plug adapter required

CAUTION

- There are some countries where the voltage and plug standards vary depending on the particular area. In some areas, homes or hotels may use a high-voltage industrial power supply (380V etc.) Please confirm before you travel that the power supply is 100-240V.
- This device is not compatible with hotel "shavers only" outlets.

Global Voltage & Plugs

Region	Country / Region	Voltage	Plug
North America	United States	120/208/240	A-2
	Canada	120/208/240	A-2, BF
	Hawaii	120/208/240	A-2
Europe	United Kingdom / England	230/240	B-3, BF, O
	Italy	125/220/230	C-2
	Austria	220/230	C-2, B-3
	Netherlands	220/230	C-2
	Greece	220/230	C-2, B-3
	Switzerland	220/230	C-2, B-3, BF
	Sweden	220/230	C-2
	Spain	127/220	A-2, C-2
	Denmark	220/230	C-2
	Germany	127/220/230	C-2
	Norway	230	C-2
	Hungary	220	C-2
	Finland	220/230	C-2
	France	127/220/230	C-2, O
	Belgium	127/220/230	C-2
Oceania	Russia	127/220	A-2, C-2
	Australia	240/250	O
	Guam	110/120/240	A-2
	Saipan	110	A-2
	Tonga	240	O
	New Zealand	230/240	O
	Fiji	120/240	A-2, C-2, O
Asia	Japan	100 (Gen.household)	A-2
	India	230/240/250	C-2, B-3, BF
	Indonesia	127/220/230	A-2, C-2, B-3, BF
	Singapore	110/230	B-3, BF
	Thailand	220/240	A-2, C-2, BF
	South Korea	220	C-2
	Taiwan	110/220	A-2, O
	China	110/220	A-2, C-2, B-3, BF, O
	Philippines	110/115/220 / 230/240	A-2, C-2, B-3, BF, O
	Vietnam	110/120/220 / 230	A-2, C-2
	Hong Kong	200/220	C-2, B-3, BF
	Macao	115/127/220	A-2, C-2, B-3
	Malaysia	240	C-2, B-3, BF
Central and South America	Argentina	220/225	C-2, BF, O
	Puerto Rico	120	A-2
	Brazil	127/220	A-2, C-2
	Mexico	120/125/127	A-2
Middle East and Africa	United Arab Emirates	220/230/240	C-2, B-3, BF
	Egypt	220	C-2, B-3, BF
	Kuwait	240	C-2, B-3, BF
	Turkey	220/230	A-2, C-2
	South Africa	220/230/240 / 250	C-2, B-3, BF
	Morocco	115/127/220	C-2

Some countries/areas may have voltages and/or plug types not listed above.

TROUBLESHOOTING

Problem	Possible Cause	Treatment
Plates do not consistently heat up when power is turned on.	Power cord may have started to burn out.	Immediately stop use and contact the Bioprogramming Information Center.
Part of the power cord is abnormally hot.		
Power cord abnormalities such as twisting, swelling or denting.	Weight and/or object is being applied to a section of the cord.	
Power plug is abnormally hot.	Cord connection to outlet may be loose.	Use an outlet that is not loose.
Plates do not heat up when power is turned on.	—	Immediately stop use and contact the Bioprogramming Information Center.
Set temperature cannot be maintained.		
Unusual sound when using.		
No melody or operating sound when pressing button.		
Light does not illuminate.		
Plates do not open.		
Device has been dropped.		
There is a burning smell.	Hair, debris, dust, styling products, etc. are stuck on the plates.	Turn off and unplug the device. Wait until device has completely cooled before removing foreign substances. (Refer to page 11)

If the above troubleshooting measures do not resolve the current issue, do not attempt to repair the device by yourself. Please contact the Bioprogramming Information Center. For details, please refer to page 16.

MEMO

CUSTOMER SUPPORT & LIMITED WARRANTY

CUSTOMER SUPPORT

THANK YOU FOR PURCHASING A LUMIELINA BIOPROGRAMMING DEVICE.

If you have a question about your device or your device requires service, please call the Bioprogramming Information Center with your serial number and details of when and where you purchased the device.

If your device is under Limited Warranty and it is a covered repair, it will be repaired at no cost.

If your Limited Warranty period has ended, please contact the Bioprogramming Information Center with questions regarding repair.

Product, Order, and Repair Inquiries

Bioprogramming Information Center

1-888-585-LUMI (5864)

10:00 AM to 6:00 PM ET (Except for weekends and holidays)
customersupport@lumielina.com

* Changes may occur to the above contact information and hours of operation.

BIOPROGRAMMING REGISTRATION REQUIREMENTS

The Limited Warranty period is six (6) months from date of purchase unless extended by registering your device.

To ensure you receive prompt and efficient service, please register online as a Bioprogramming device owner by visiting bioprogramming.com/register

Following the successful registration of a Bioprogramming device, your official Extended Warranty Registration Certificate will be sent via email. Please print and save this Extended Warranty Registration Certificate for your records.

*Please note, if the submitted product registration form is incomplete, the Extended Warranty Registration Certificate may not be generated and the extension to the initial Limited Warranty period may not be approved.

*Personal information submitted by customers may be used while processing any repair requests submitted during the Limited Warranty period, for device inspections, or for marketing and communication purposes.

BIOPROGRAMMING LIMITED WARRANTY TERMS & CONDITIONS

This Limited Warranty is only valid in the U.S. and Canada.

This Limited Warranty covers the device against defects in material or workmanship for six (6) months from the date of purchase. This Limited Warranty may be extended for up to eighteen (18) months if the product is registered in accordance with the Bioprogramming Registration Requirements.

PLEASE NOTE: This Limited Warranty is only valid with a copy of the original proof of purchase or Extended Warranty Registration Certificate. If there is no proof of purchase or Extended Warranty Registration Certificate, the device will not be covered.

The device must be purchased from an authorized Bioprogramming retailer or distributor. Proof of purchase from any unauthorized sellers or unauthorized online merchants is not accepted.

The Terms and Conditions of this Limited Warranty are subject to change without notice. Please visit the Bioprogramming website for further details regarding the Limited Warranty. To apply for the Limited Warranty extension, please register your device at:

bioprogramming.com/register





LUMIELINA

LUMIELINA USA, INC.

505 5th Avenue, 28th floor, New York, NY, 10017-4917

Lumielina.com

Design and Technology by Lumielina in Japan / Assembled in Korea

*Bioprogramming, Honshitsubi (本質美), TimeCess Beauty, Future Beautism, Time-Transcending Beauty (時を超える美), REPRONIZER, HAIRBEAURON, CUREINA, HairTimecess, SkinTimecess, and ColorTimecess are all trademarks or registered trademarks of LUMIELINA INTERNATIONAL INC. and its related entities.

Performance-based improvements in the use or design of the product may occur without advance notice.

HBRST7D-US 220112