




## Replacing and Installing a New Server Motor

**Elite Models that Apply: EL0A, Liberty, 1, 2, 2.10, 3, 3.10, Pickle, Pickle2, EL05-LE**

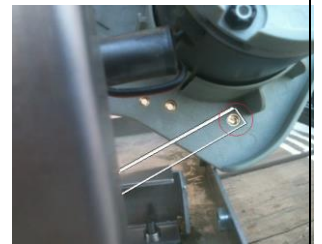
Step	Description	Tools	Picture
1	<p>Unscrew the (6) phillips-head screws along the bottom of the red case where it attaches to the chassis of the machine. (2-front, 2-rear, one on each side) Lift the red case off the chassis and set it aside being careful not to disconnect any wires.</p>	<p>Phillips Screw Driver</p>	 <p>Case Screws (Front &amp; Rear)</p> <p>Case Screws (Side)</p> <p>Case Removed</p>
2	<p>Remove server wheel assembly that corresponds to the server motor that is to be replaced. (top or bottom server motor) Remove the set screw by inserting the 1/8" Allen on the server wheel shaft (right hand side). Be sure to remove bottom server wheel to gain access to detach the shoulder bolt and nut.</p>	<p>1/8" Allen Wrench</p>	 <p>Server wheel &amp; set screw</p>
3	<p>Remove yoke bolt. This is the large bolt that passes through the yoke and support arms (Davit).</p>	<p>(2) 9/16" Wrenches</p>	 <p>Yoke bolt w/washer and</p>

**Replacing and Installing a New Server Motor**

plastic spacer

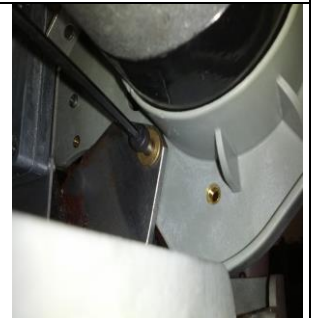


**EL01 and Pickle 2 models only:**  
Remove the elevation shoulder screw from the lower screw hole in the yoke.

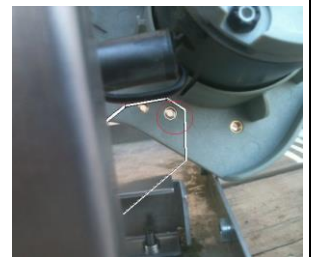


Elite 1 link and shoulder bolt

**EL02 & EL03 models only:**  
Remove the elevation shoulder screw from the upper screw hole in the yoke.



Upper & Lower Screw Hole in Yoke



Elite 2&3 and Pickle 2 link and shoulder bolt.



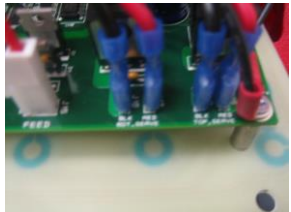

4

Remove shoulder bolt that connects the elevation link to the yoke. Set yoke aside being careful not to disconnect any wires.



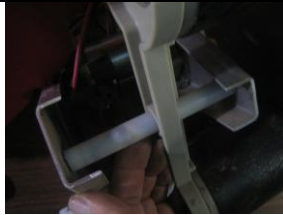




Elevation Link Shoulder Bolt

**Replacing and Installing a New Server Motor**

<p>5</p>	<p>Remove server motor mounting nuts from plastic motor mount. Ensure that the (2) mounting nuts from each motor is removed so that proper positioning can take place. Set motor mount aside.</p>	<p>#8 Socket</p>	 <p>Server Motor Mounting Nuts</p>
<p>6</p>	<p>Remove the (3) server motor mounting screws from the yoke that corresponds with the server motor that is being replaced. Pull motor off of yoke.</p>		 <p>Server Motor Mounting Screws</p>
<p>7</p>	<p>Cut the zip-tie(s) that are securing the server motor wires.</p>		
<p>8</p>	<p>Follow the red (positive) and black (negative) wires leading from the server motor to the back of the control panel. Disconnect both wire connection clips from the tabs on the green electronic board that corresponds with the server motor that is being replaced (Top or Bottom Server Motor).</p>		 <p>Server Motor Connections</p>
<p>9</p>	<p>Insert new motor into yoke. The existing motor screws should be visible through the holes in the yoke to ensure proper alignment.</p>		 <p>Server Motor Holes in Yoke</p>
<p>10</p>	<p>Insert the (3) motor mounting screws into the yoke to attach motor. Ensure all (3) screws are in each of the screw holes before tightening.</p>		

**Replacing and Installing a New Server Motor**

<p>11</p>	<p>Reattach motor mount using the (4) motor mount nuts ensuring all nuts are "snug" tight.</p>		 <p>Reattach Motor Mount</p>
<p>12</p>	<p>Insert the white plastic yoke spacer into the center hole of the motor mount.</p>		 <p>Insert Large Plastic Spacer</p>
<p>13</p>	<p>Align the yoke assembly so that the yoke spacer sits in between the metal support arms (Davit)</p>		 <p>Align Yoke Between Support Arms (Davit)</p>
<p>14</p>	<p>Insert yoke bolt into the yoke ensuring the washer is against the bolt head. Once the yoke bolt is through the yoke place the small white plastic spacer between the yoke and the support arm (Davit) and pass the bolt through the small spacer. Before proceeding to push the yoke bolt through the long spacer, put 3 washers between the long spacer and the support arm (Davit).</p>		 <p>Slide yoke bolt through long plastic spacer and davit</p>
<p>15</p>	<p>Push the yoke bolt through the yoke support arm, large plastic spacer, and into the second support arm (Davit) and place the washer over the end of the yoke bolt. Tighten the yoke bolt nut until "snug". Do not over tighten.</p>		 <p>Yoke Bolt through Support Arms and Attach Nut</p>

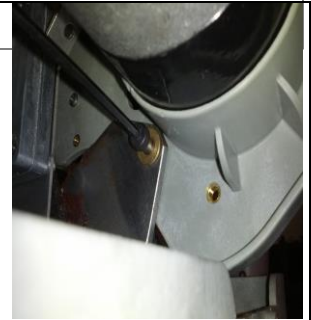
**For EL02 & EL03 models Go To Step 16. For EL01, and Pickle 2 models Go To Step 17. For all other models Go To Step 18.**

**Replacing and Installing a New Server Motor**

16

**EL02 & EL03 models only:**

Reattach the elevation shoulder screw into the upper screw hole in the yoke.



Upper & Lower Screw Hole in Yoke



Elite 2&3 and Pickle 2 link and shoulder bolt.

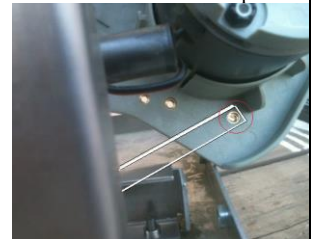
17

**EL01 model only:**

Reattach the elevation shoulder screw into the lower screw hole in the yoke.



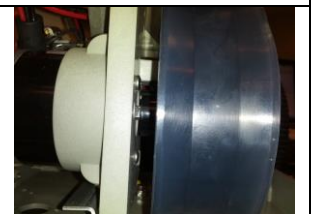
Shoulder Bolt Nut Cap






Elite 1 link and shoulder bolt

18

Reattach the server wheel to the server motor shaft ensuring server wheel hub (inner portion of server wheel) is pushed in as close to the server motor without touching. (approximately 1/16")



Position Server Wheel 1/16"

<b>Replacing and Installing a New Server Motor</b>			from Server Motor
19	Connect the red (positive) and black (negative) wires from the server motor to the corresponding connection tabs on the green electronic PCB board on the back of the control panel. (Top or Bottom Server Motor)		 <p>Server Motor Connections</p>
20	Reattach the red case using the (6) phillips-head screws being careful not to disconnect any wires and turn on machine.		 <p>Case Screws (Front &amp; Rear)</p>  <p>Case Screws (Side)</p>
	<b>E872 Server Motor</b> <b>E484 Yoke Bolt</b> <b>E526 Server Wheel Assembly</b>		