


Replacing and Installing a small Battery.

Step	Description	Tools	Picture
	<p>Models that Apply: Liberty, Pickle</p> <p>Here is what the E882 Small Battery Looks Like.</p> 		

Replacing and Installing a small Battery.

Removing The Case

Unscrew the (6) Phillips-head screws along the bottom of the red case where it attaches to the chassis of the machine. (2-front, 2-rear, one on each side) Remember to also unscrew the Elevation knob on the right hand side of the machine.

Lift the red case off the chassis and set it aside next to the machine.

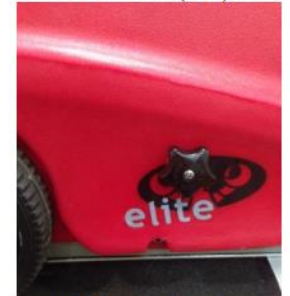
Philips
Screw
Driver



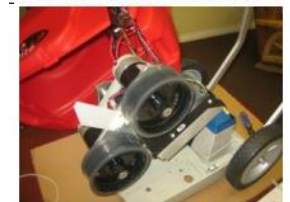
Case Screws (Front & Rear)



Case Screws (Side)



Rosetta Elevation Knob Screw.



Case Removed

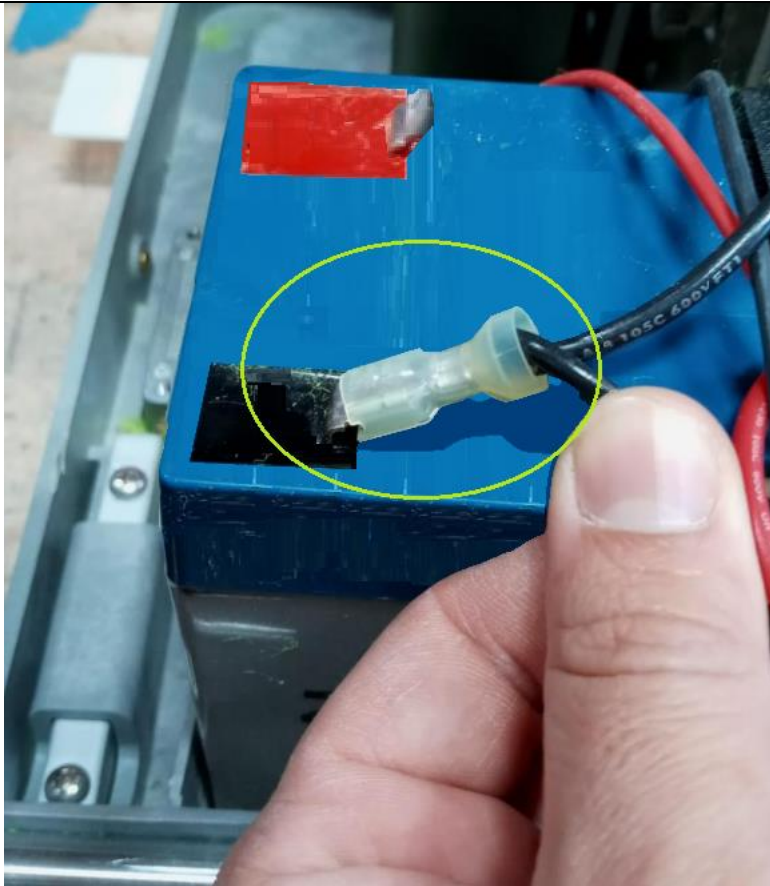
Removing the Small Battery

Disconnect the Negative (black wire) wire from the battery terminal on the battery.



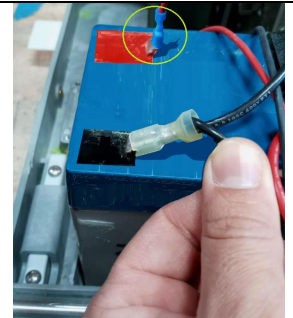
Negative wire being disconnected from Battery.

Replacing and Installing a small Battery.

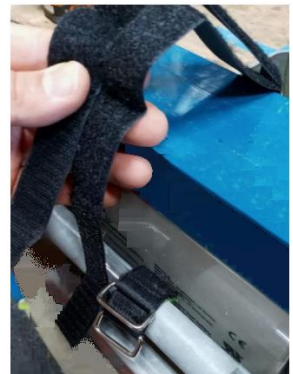


(Black wire circled in Green)

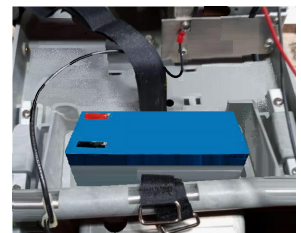
Disconnect the Positive (red wire) wire from the battery terminal on the battery.



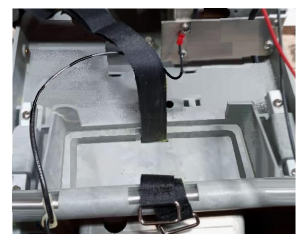
Red wire being disconnected from battery.



Velcro Straps holding battery in place.



(Small Battery inside of machine)



Battery Removed from Machine.

Replacing and Installing a small Battery.



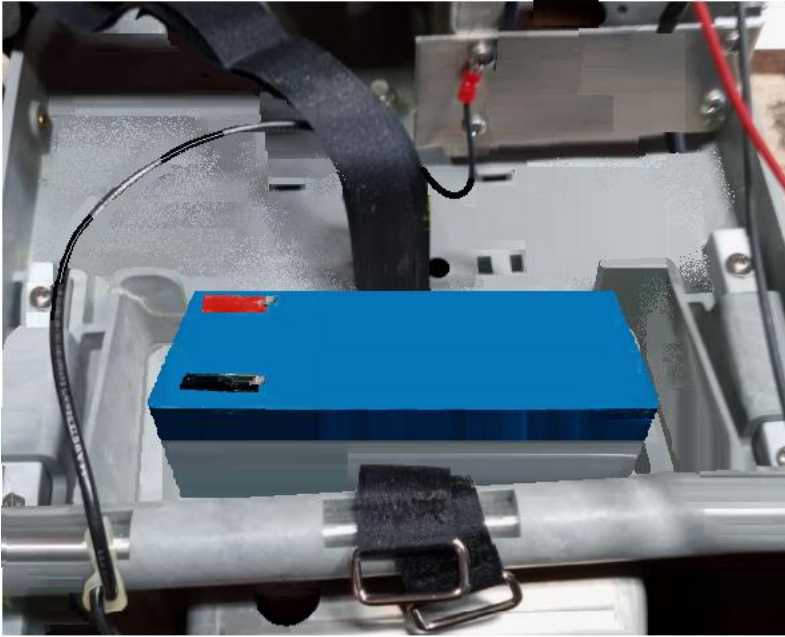
(Red wire circled in Green)

Unstrap the Velcro strap(s) that hold the small battery in place.



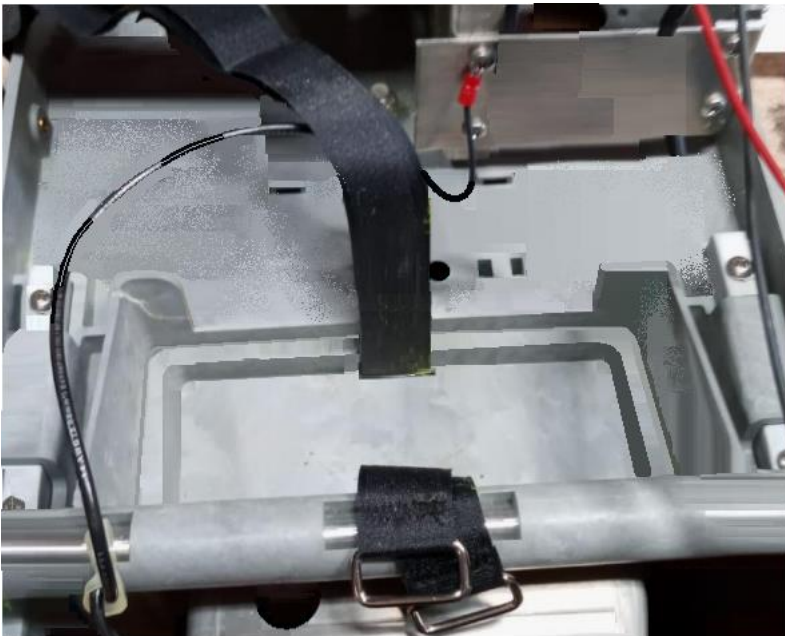
Replacing and Installing a small Battery.

(Small Battery Straps)



(Small Battery inside of machine)

Pull the small battery out of the machine.

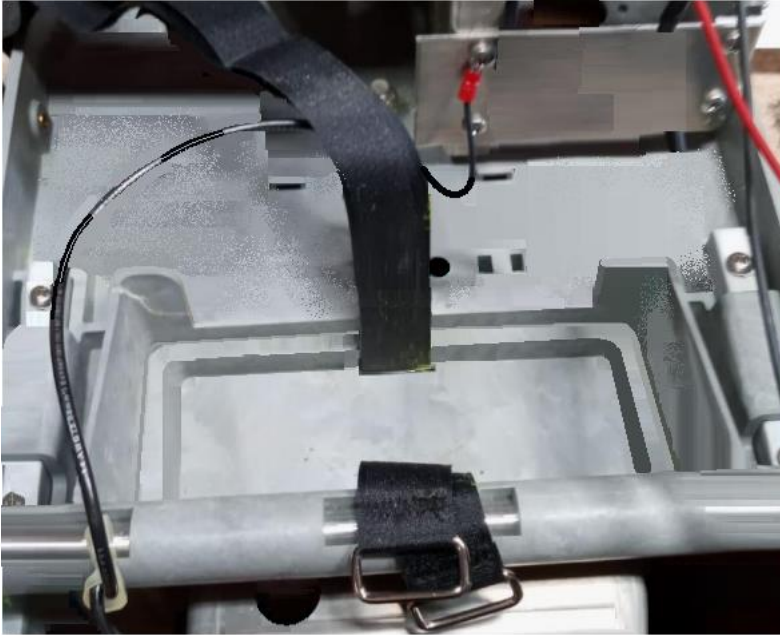


(Small battery removed from machine)

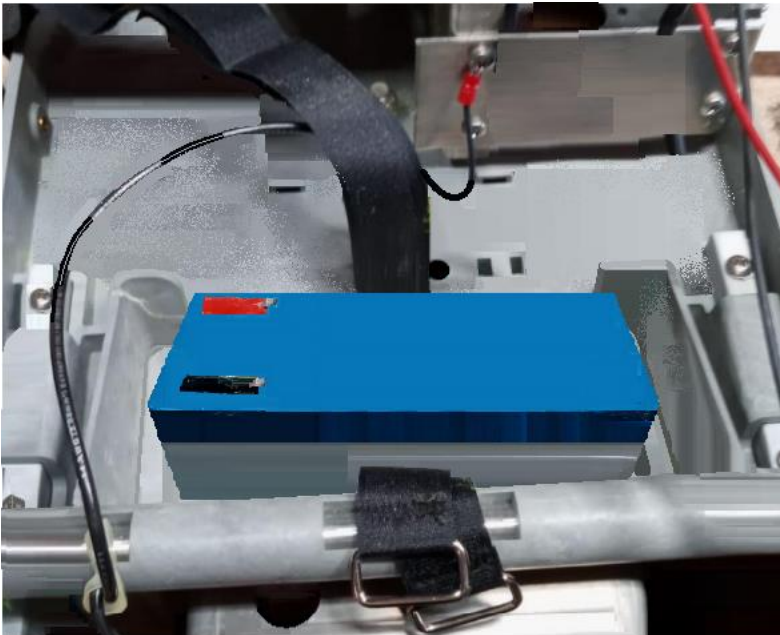
Replacing and Installing a small Battery.

Installing the New Small Battery

Put the small battery in empty slot where the old battery was previously housed.

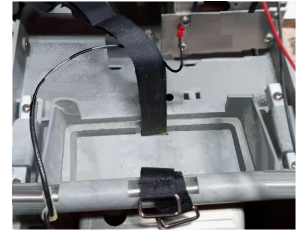


(Small battery removed from machine)

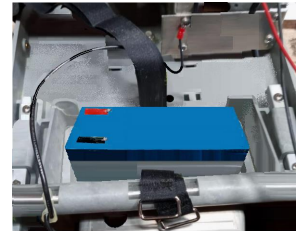


(Small Battery inside of machine)

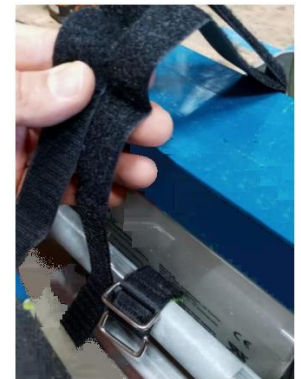
Adjust the small Velcro strap(s) and tighten until the battery



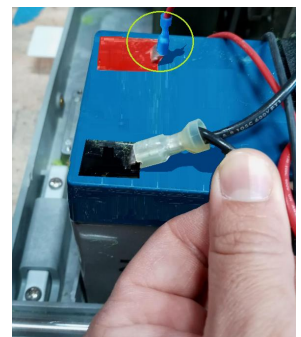
Battery Removed from Machine.



(Small Battery inside of machine)



Velcro Straps holding battery in place.



Red wire being connected to Battery.

Replacing and Installing a small Battery.

is secure.



(Small Battery Straps)

Re-connect the Positive (red wire) wire to the red terminal on the battery.



Negative wire being connected to Battery.

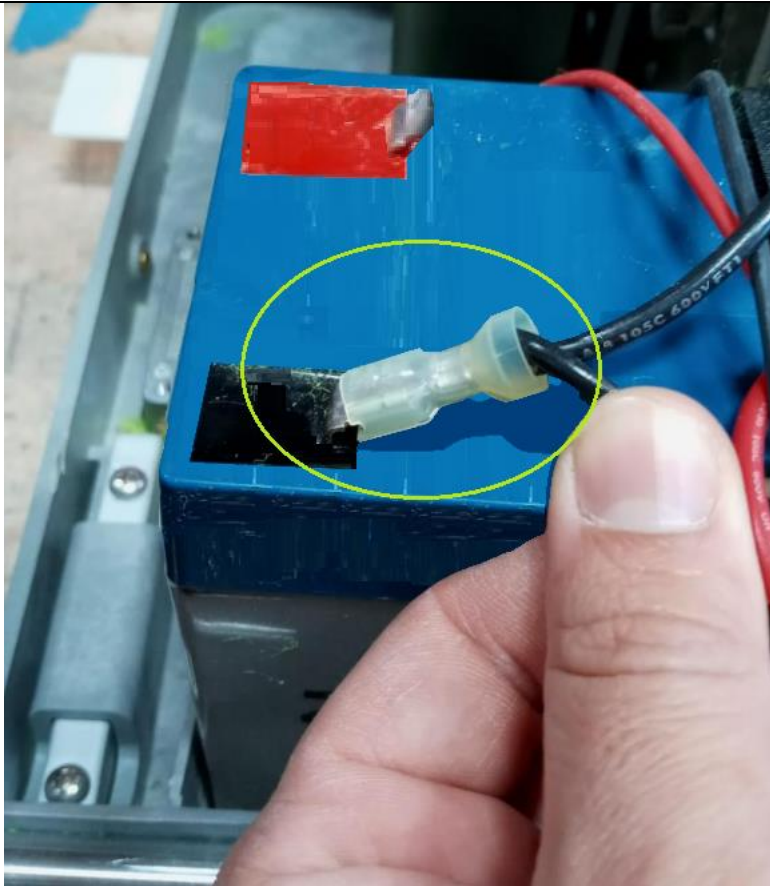
Replacing and Installing a small Battery.



(Red wire circled in Green)

Re-connect the Negative (black wire) wire to the black terminal on the battery.

Replacing and Installing a small Battery.



(Black wire circled in Green)

Re-attaching The Case

Lift the red case and lower until it is covering the whole Chassis of the machine.

Screw the (6) Philips-head screws along the bottom of the red case where it attaches to the chassis of the machine. (2-front, 2-rear, one on each side) Screw in the Elevation Knob on the right-hand side of the machine.

Philips
Screw
Driver

Replacing and Installing a small Battery.



Case Removed



Case Screws (Front & Rear)



Case Screws (Side)



Rosetta Elevation Knob Screw.