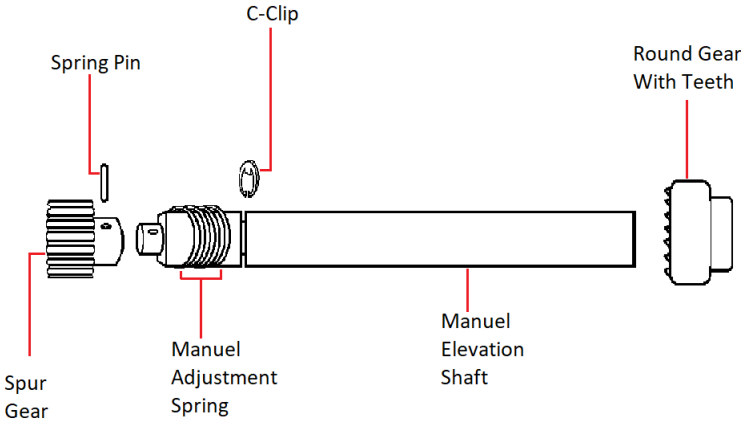




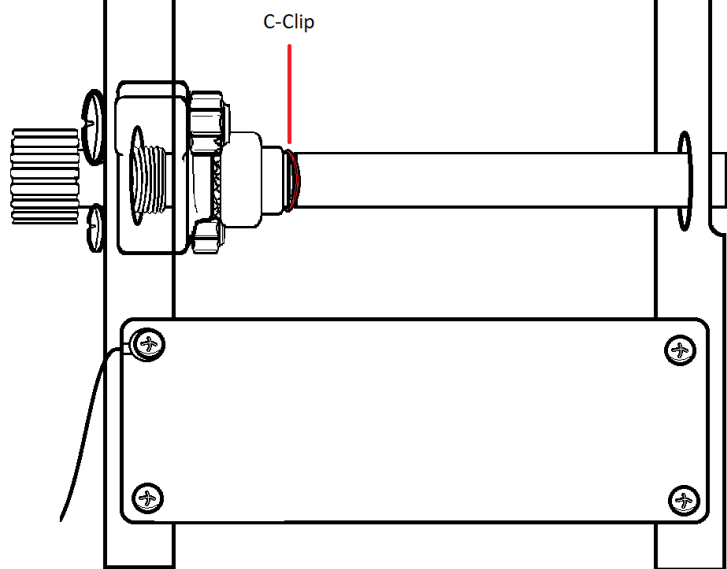
Replacing and Installing a Manual Elevation Shaft and Spur Gear

Step	Description	Tools	Picture
	<p>Models that Apply: Elite Freedom, Liberty, and Pickle.</p> <p>Please use the diagram below to help identify the parts.</p> 		
	<p style="text-align: center;"><b>Removing The Case</b></p> <p><b>Step 1.)</b> Unscrew the (6) Phillips-head screws along the bottom of the red case where it attaches to the chassis of the machine. (2-front, 2-rear, one on each side) Remember to also unscrew the Elevation knob on the right hand side of the machine.</p> <p><b>Step 2.)</b> Lift the red case off the chassis and set it aside next to the machine.</p>	<p>Crescent Wrench</p> <p>P2 Phillips Screw Driver/ Screw Gun</p>	

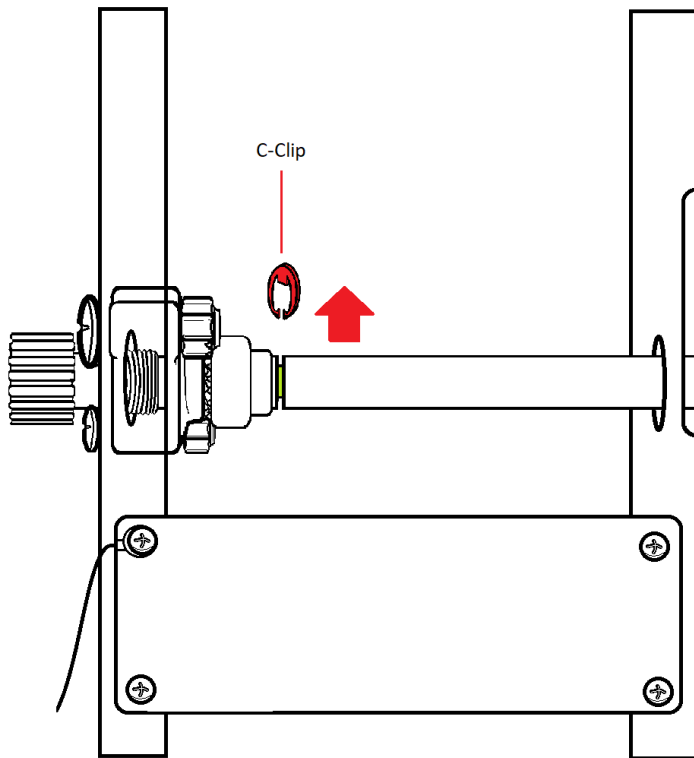
Replacing and Installing a Manual Elevation Shaft and Spur Gear

			<p>Rosetta Elevation Knob Screw.</p>  <p>Case Removed</p>
	<p><b>Removing The Old Manual Elevation Assembly Shaft.</b></p> <p><b>Step 1.)</b> Make sure the elevation is at its lowest position (this will make it easier to remove the shaft.).</p> <p><b>Step 2.)</b> Pop out the C-clip to allow the shaft to be free. You might need to rotate the C-clip so that it shows the 2 edges of its opening, then using something flat, to push it until the clip pops off of the elevation shaft (be sure to keep the C-clip in a safe place as you will need this again.).</p>	<p>Crescent Wrench</p> <p>P2 Phillips Screw Driver/ Screw Gun</p>	

Replacing and Installing a Manual Elevation Shaft and Spur Gear

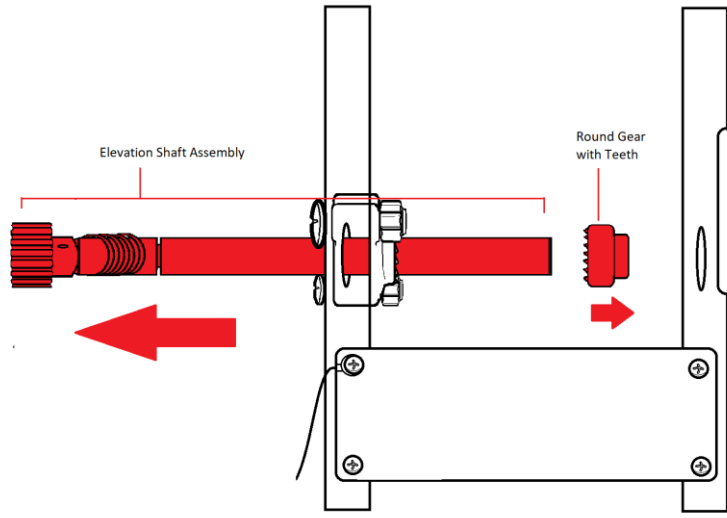


Replacing and Installing a Manual Elevation Shaft and Spur Gear



**Step 3.)** Slide out the elevation shaft by pushing it towards direction of the inside of the machine (if you are standing behind the machine this is the left direction). Hold onto the spring, elevation shaft, and spur gear, and Gear with Teeth, (if spur gear is disconnected from elevation shaft.).

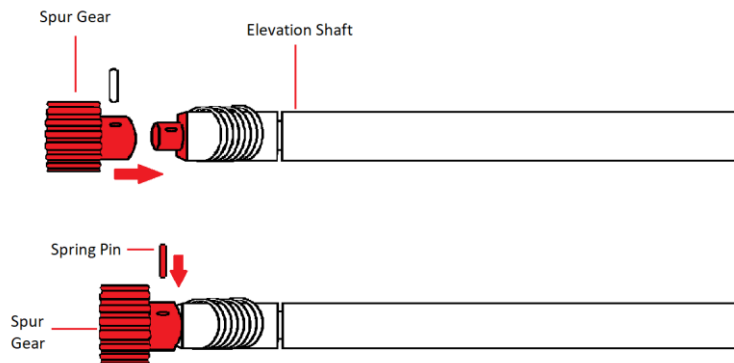
Replacing and Installing a Manual Elevation Shaft and Spur Gear



**Attaching The Spur Gear To The Elevation Shaft**

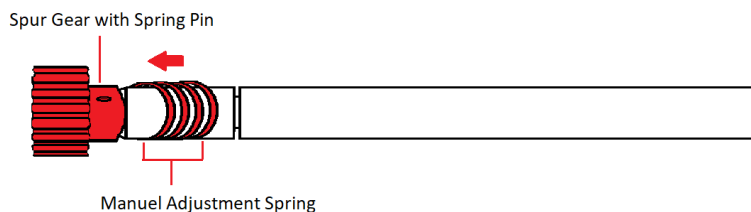
**Step 1.)** Using a pair of needle nose pliers, hold the spring pin in place, make sure the hole in the Spur Gear and Elevation Shaft are lined up by pushing the round part of the Elevation Shaft into the larger hole in the Spur Gear. Use a hammer to get the spring pin started (set) into the Elevation Shaft. Use a pair of Channel Locks to finish squeezing the spring pin until it comes out slightly on the other side (or is flush with the other side).

Replacing and Installing a Manual Elevation Shaft and Spur Gear



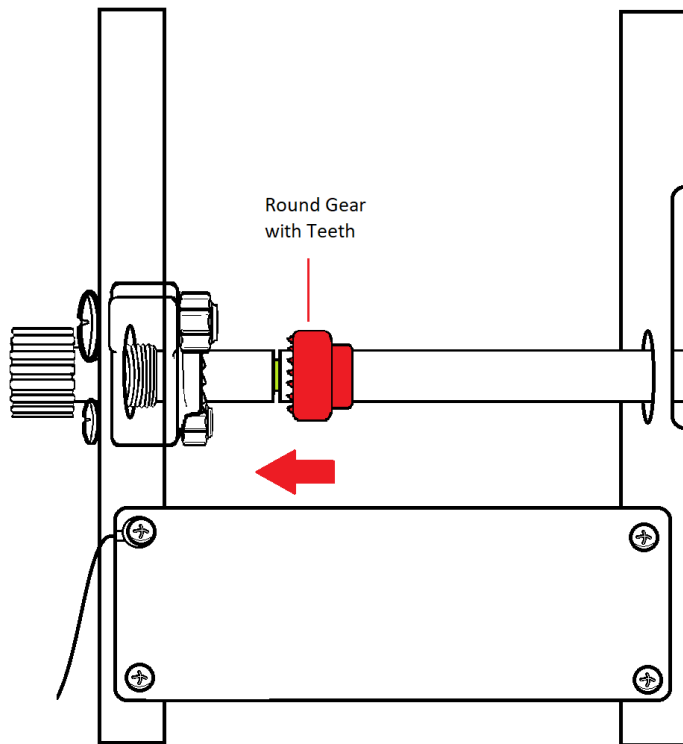
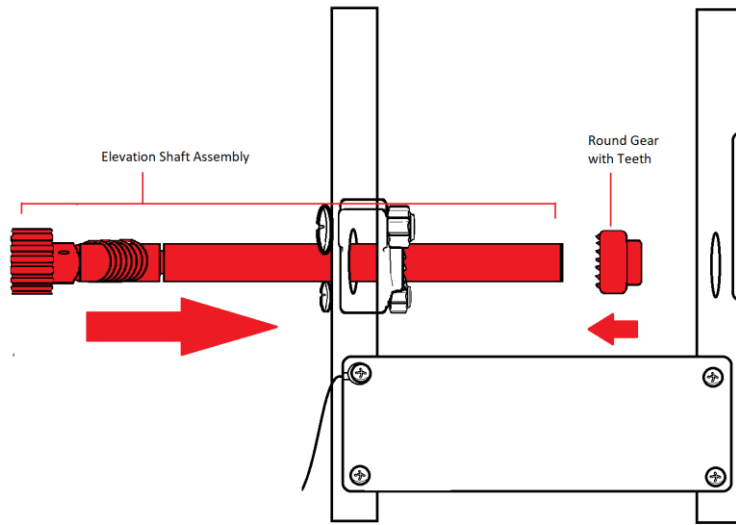
**Re-Attaching The Elevation Shaft to the Manual Elevation Assembly.**

**Step 1.)** Slide the spring onto the Elevation Shaft until it hits the Spur Gear. Take the Elevation Shaft and push it through the Elevation Shaft Mount starting on the left hand side, and pushing through the Davit Left to right.

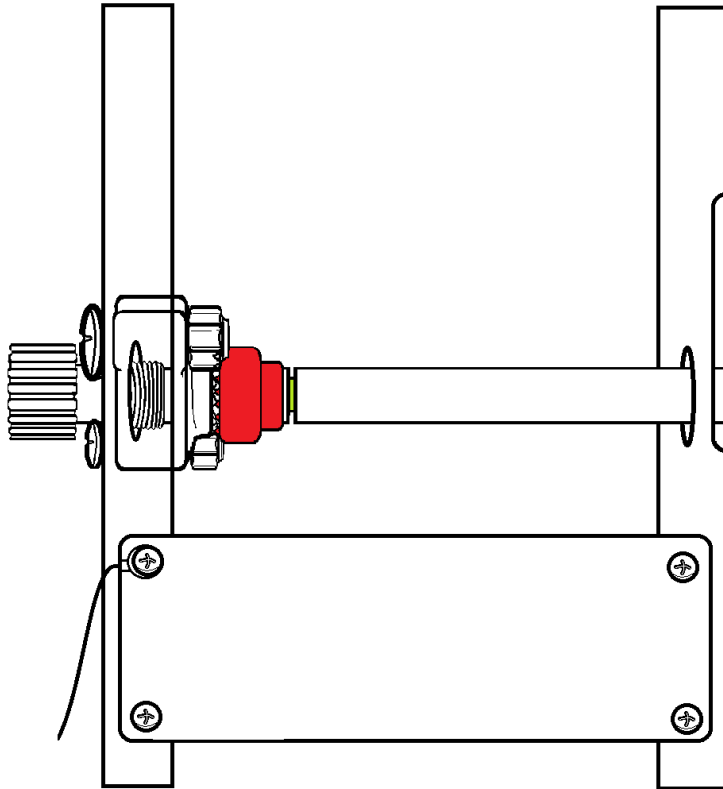


**Step 2.)** Push the Elevation Shaft in, as you are doing so, you can slide the Round Gear Teeth (make sure the teeth are pointing towards the left), on the square Elevation Shaft until it crosses over the small groove in the Elevation Shaft.

Replacing and Installing a Manual Elevation Shaft and Spur Gear



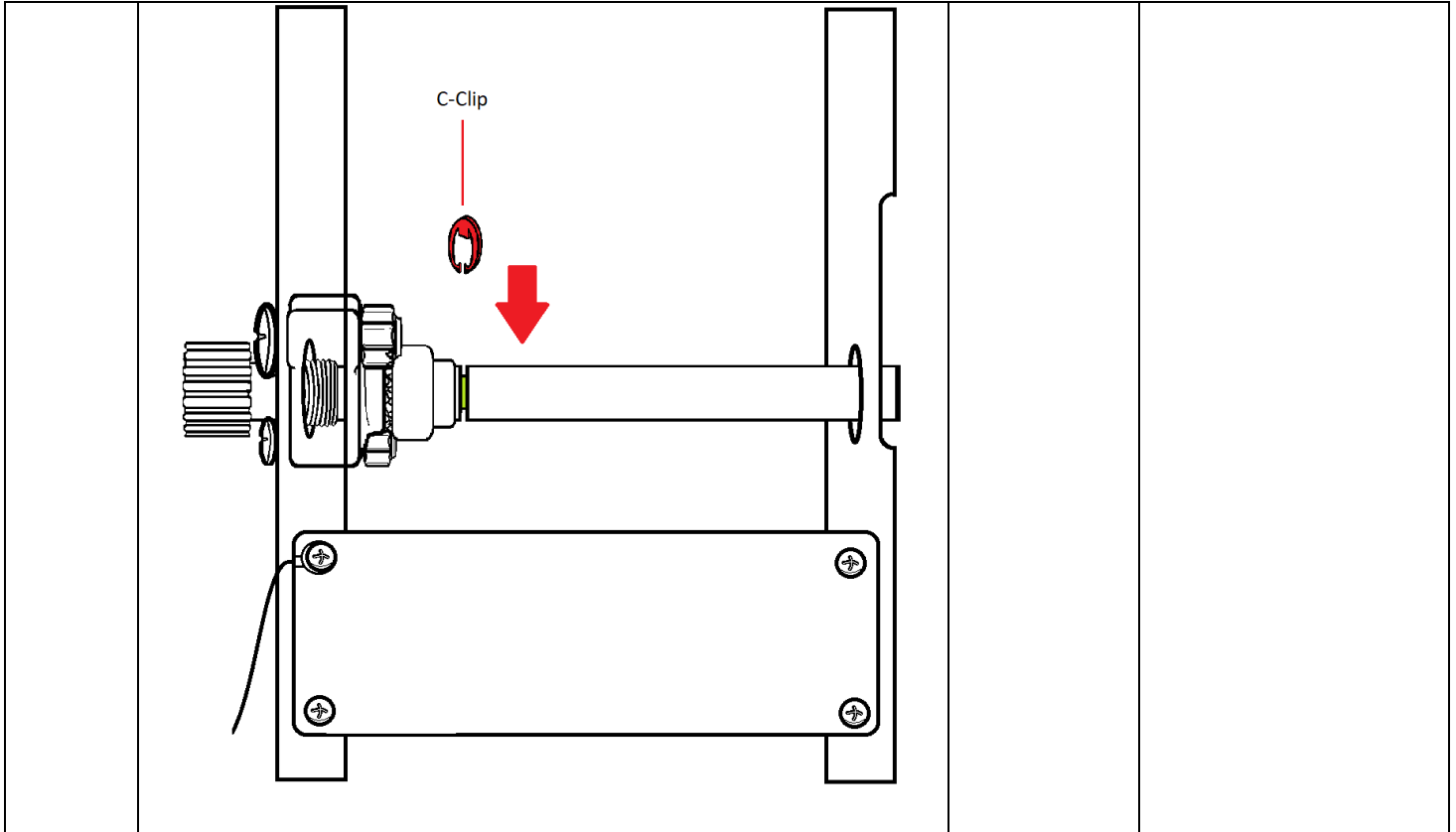
## Replacing and Installing a Manual Elevation Shaft and Spur Gear



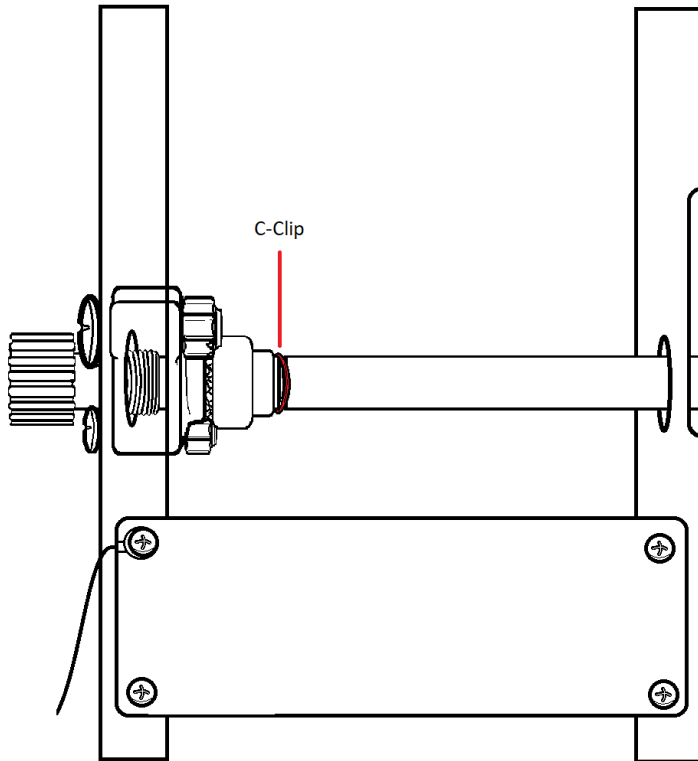
**Step 3.)** You can use a Hammer to help push the C-Clip into the groove on the Elevation Shaft. You can also use Channel Locks to try to get it to go in, it once in place it will lock everything securely in position.



Replacing and Installing a Manual Elevation Shaft and Spur Gear



Replacing and Installing a Manual Elevation Shaft and Spur Gear

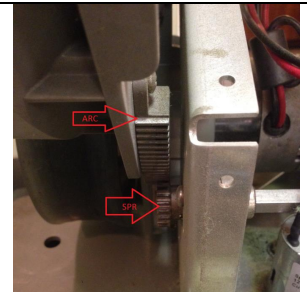


**Aligning The Elevation Spur and Rack Gear**

**Step 1.)** Check the alignment of the Rack Gear (as seen on Yoke Assembly, marked as ARC in diagram), and the Spur Gear (as seen on Elevation Assembly, marked as SPR in diagram) are lined up as shown below.

Crescent Wrench

P2 Phillips Screw Driver/  
Screw Gun

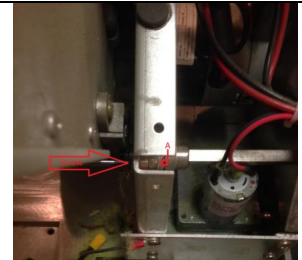
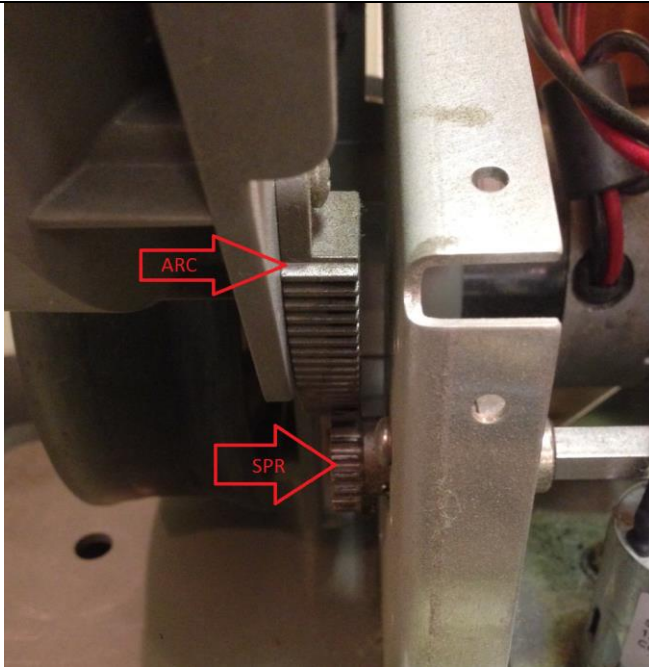


Rack Gear and Spur Gear placement.

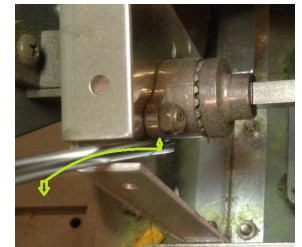


A. of diagram Showing where nut is.

Replacing and Installing a Manual Elevation Shaft and Spur Gear



Screw location and nut location.



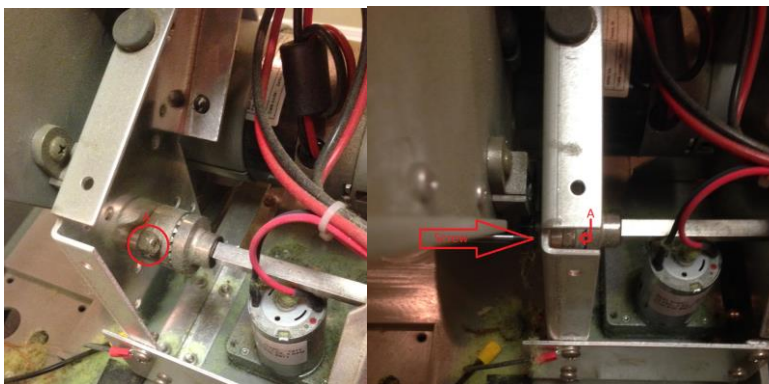
Pushing Elevation Gear Assembly in place.



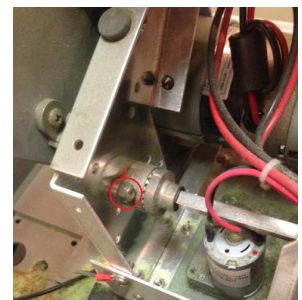
Gear lined up.



Gear lined up.

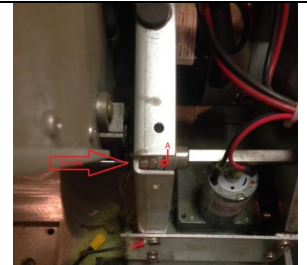
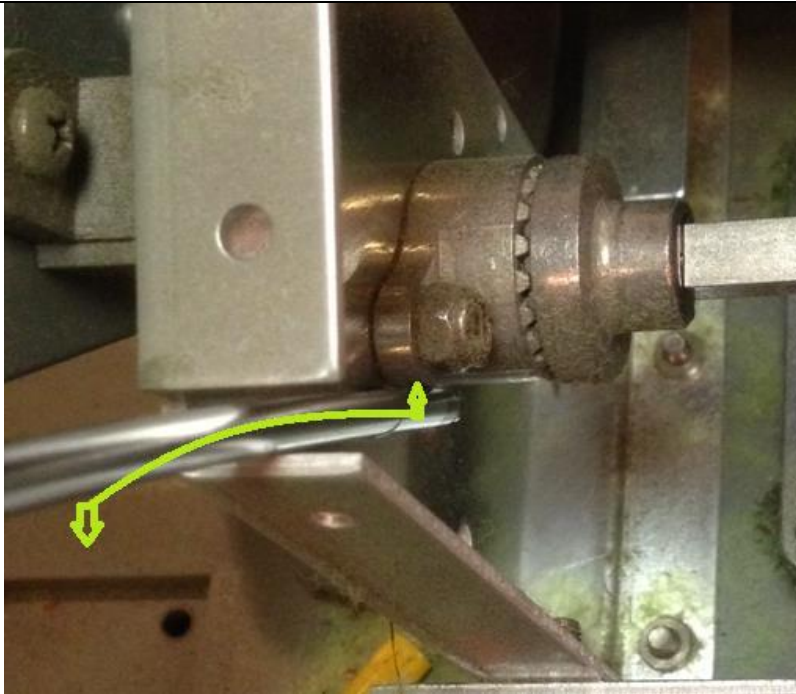


**Step 2.)** Push the Elevation Assembly so that the teeth from the gear of the Elevation Assembly line up with the gear from the Yoke Assembly. (See diagram below).



A. of diagram Showing where nut is.

Replacing and Installing a Manual Elevation Shaft and Spur Gear



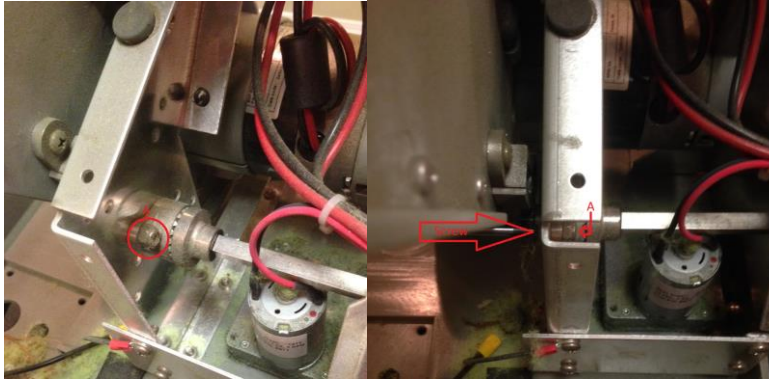
Screw location and nut location.



**Step 3.)** Using a Crescent Wrench, grab on to the nut (marked as item A. in the diagram), making sure you have a tight grip. On the opposite end, use your

Replacing and Installing a Manual Elevation Shaft and Spur Gear





drill gun with a Phillips bit, and or a screw driver with a Phillips bit to tighten the nut. This should lock the elevation in place.



**Step 4.)** Attach Elevation Knob (previously removed when taking off the Red Case). Adjust the elevation to ensure that the elevation moves up and down at full range, and does not slip. Unscrew Elevation knob after testing.



Replacing and Installing a Manual Elevation Shaft and Spur Gear

	<p style="text-align: center;"><b>Re-attaching The Case</b></p> <p><b>Step 1.)</b> Lift the red case and lower until it is covering the whole Chassis of the machine.</p> <p><b>Step 2.)</b> Screw the (6) Philips-head screws along the bottom of the red case where it attaches to the chassis of the machine. (2-front, 2-rear, one on each side) Screw in the Elevation Knob on the right hand side of the machine.</p>	<p>Crescent Wrench</p> <p>P2 Phillips Screw Driver/ Screw Gun</p>	 <p>Case Removed</p>  <p>Case Screws (Front &amp; Rear)</p>  <p>Case Screws (Side)</p>  <p>Rosetta Elevation Knob Screw.</p>