



## KEY FEATURES

- o Power height, back, foot and tilt
- o 19" Low Entry Height (adjustable to ~40")
- o Self leveling and removable arms
- o Emergency CPR positioning lever
- o Retracting wheels for positioning and cleaning
- o 400 lbs Weight Capacity (700 lbs. Maximum Bariatric Optional)
- o Hand Control Remote
- o Seamless Easy to Clean Upholstery Made of Artificial Leather on Polyurethane Foam
- o Paper Holder
- o Push Handles Behind Headrest
- o Auto 'return-to-home'
- o Standard Color (Black, Blue, Grey)

## TECHNICAL SPECIFICATIONS

Anti-bacterial ABS Platform

Height	: 19"-39.5" 50-100cm
Width	: 30" 76cm
Length	: 74.5" 189.5cm
Back Section Width	: 19" 49cm
Seat Section Width	: 24" 61cm
Foot Section Length	: 14" 35cm
Armrests Weight Capacity	: 90lbs 41kg
Back Section Tilt	: 0-90°
Foot Section Tilt	: 0-90°
Trendelenburg	: Optional
Reverse Trendelenburg	: N/A
Weight of Chair	: 195 lbs. 89kg
Safe Load (maximum)	: 700 lbs. 317.5kg
Electrical Requirements:	110-230 VAC nominal, 50-60HZ, 5.8 amps max
Power Input	: 4N2A
Duty Cycle (10%)	: 2 minutes on / 18 minutes off (motor run time)

## DESCRIPTIONS

This powered phlebotomy chair is primarily used in general procedural examination rooms for general examinations and minor procedures. The wide range of positions achievable by the four electric powered motors allow for full control over patient positioning and comfort for most examinations and procedures performed in the doctor's office.

The hand control provided with the chair provides ease of access to easily adjust the backrest, leg rest, as well as the height positioning feature. The table height can be adjusted from 19" to ~40" with the positioning wheelbase and with the flat wheelbase the chair can lower to 15-16". In addition to these power positioning features; several manual adjustments are available.

## INTENDED USE

Phlebotomy, Hi-Lo Blood Drawing Chair is designed to comfort and support patients during diagnostic, general procedures, and minor surgeries by qualified medical professionals.

## COLOR OPTIONS





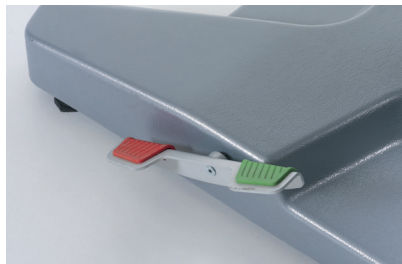
Hand Control Unit



Barrier Free Adjustable Armrests



Emergency Positioning CPR Lever



Retracting Positioning Wheels

## ADD-ON OPTIONS

1. Dual-Mounted membrane controls
2. Foot controller
3. Back Basket
4. Battery Backup

