



KEY FEATURES

- o Power lift, back, foot
- o 400 lbs Weight Capacity (700 lbs Maximum Bariatric Optional)
- o 19"-40" Low Entry Height (available on flatbase)
- o Retracting wheels for positioning and cleaning (available on positioning wheels base)
- o Dual-Mounted membrane controls
- o Barrier free adjustable armrest
- o Emergency CPR positioning lever
- o Standard Color (Black, Blue, Grey)
- o Auto 'return-to-home' function

TECHNICAL SPECIFICATIONS

- | | |
|-----------------------------|---|
| 1. Height (flat base) | :19" – 40" (48,25 cm – 100 cm) |
| 2. (Positioning Wheels) | : 22,4" – 42," (57 cm – 107 cm) |
| 3. Width | :30" (76 cm) |
| 4. Length | :74,5" (189,50 cm) |
| 5. Back Section | :21,6" (55 cm) wide x 31,4" (80 cm) long |
| 6. Seat Section | :24" (61 cm) wide x 17" (43 cm) long |
| 7. Foot Section | :19,6" (50 cm) wide x 13,4"(34 cm) long |
| 8. Armrests Weight Capacity | :90 lbs (41 kg) |
| 9. Back Section Tilt | :0-90° |
| 10. Foot Section Tilt | :0-90° |
| 11. Trendelenburg | :0-13° |
| 12. Weight of Chair | :195 lbs (89 kg) |
| 13. Safe Load (Max) | :400 lbs (181 kg.) optional: 700 lbs (317 kg) |
| 14. Electrical Requirements | :110-230 VAC nominal,50-60HZ 5,8 amps max |

DESCRIPTIONS

Purpose

600042 (6ENT42) ENT Exam Chair is designed to provide a positioning and comfortable support for patients during ENT procedures by qualified medical professionals.

Intended Use

The ENT power exam chair is primarily used in examination rooms for general ear, nose and throat (ENT) examinations and minor procedures. The wide range of positioning provided for by powered motors allow for extensive patient positioning and comfort for most examinations and procedures performed in the doctor's office. The ease of access for practitioner at the backrest for quick control and necessary adjustments for Ophthalmologists, optometrists and general physicians for minor surgical or operational and diagnostic need is essential. The tapering back allows for close access to the ear, nose and throat region. The plush seating, extendable footrest for comfort of patient and the ADH compliant low seat height with extra weight capacity offers ENT practitioners and patients everything they need for safe and comfortable use.

The hand control provided with the chair provides ease of access to easily adjust the backrest, leg rest, as well as the height positioning feature. An optional patient and controller set attached to the backrest for quick and accessible access includes extra convenience for practitioner positioning. The table height can be adjusted from 19" to 38,5". In addition to these power positioning features, several manual adjustments are available.



COLOR OPTIONS





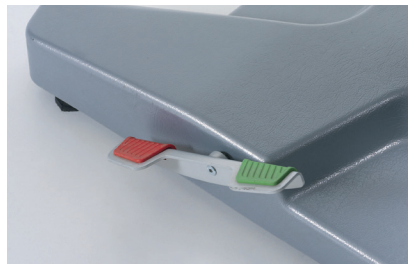
Hand Control Unit



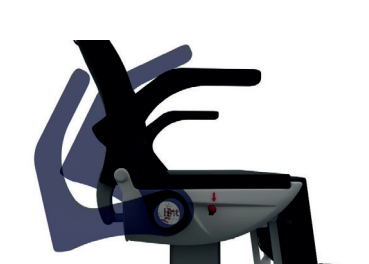
1. Foot Support Platform



Emergency Positioning CPR Lever



Retracting Positioning Wheels



Barrier Free Adjustable Armrests



Dual Membrane Side Control Switches

ADD-ON OPTIONS

1. Foot Control Panel
2. Back Basket
3. Ri-Magic Light
4. Battery Backup

