



## KEY FEATURES

- o Power lift, back, tilt, foot
- o 400 lbs Weight Capacity (700 lbs Maximum Bariatric Optional)
- o 19" Low Entry Height (adjustable to 40")
- o Retracting wheels for positioning and cleaning
- o Seamless easy to clean upholstery
- o Standard Color (Black, Blue, Grey)
- o All steel frame

## TECHNICAL SPECIFICATIONS

Height	:19" – 40" (48,25 cm – 100 cm)
Width	:23,6" (60 cm)
Length	:69,3" (176 cm)
Back Section Width	:23,6" (60 cm)
Seat Section Length	:18,9" (48 cm)
Foot Section Length	:12,6" (32 cm)
Back Section Tilt	:0-90°
Foot Section Tilt	:0-90°
Trendelenburg	:Standart
Weight of Chair	:195 lbs (89 kg)
Safe Load (Max)	: 400 lbs (181 kg.) optional: 700 lbs (317 kg)
Electrical Requirements:	110-230 VAC nominal, 50-60HZ 5,8 amps max

## DESCRIPTIONS

### PURPOSE

Pedia Pals 600041 series Proctology Exam Chair is designed to provide a positioning and comfortable support for patients during diagnostic, general procedures and minor surgeries by qualified medical professionals.

### INTENDED USE

This Power Procedures Chair is primarily used in general proctology procedures and other general examinations and minor procedures. The wide range of positioning provided for by powered motors allow for extensive patient positioning and comfort for most examinations and procedures performed in the doctor's office. The Proctology chair offers a variety of extras to include plush seating, optional foot controls, and extra weight capacity for all circumstances and needs in proctology exams.

The hand control provided with the chair provides ease of access to easily adjust the backrest, leg rest, as well as the height positioning feature. An optional foot controller set offers extra convenience for practitioner positioning. The table height can be adjusted from 19" to 40". In addition to these power positioning features, several manual adjustments are available.

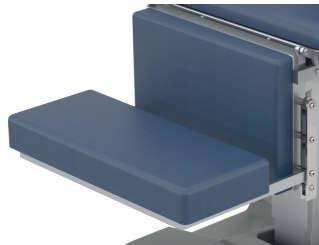


### COLOR OPTIONS





Hand Control Unit



Foot Support Platform



Proctology Support



Retracting Positioning Wheels



Grab Bars



Articulating Universal Legholder

## ADD-ON OPTIONS

1. Foot Control Panel
2. Back Basket
3. Battery Backup

