

Andiamo!

"Let's go!"
(A Viola Section Feature*)

Sarah Siegler (ASCAP)
Edited by J. Cameron Law

Allegro (♩ = ca. 120)

Violin I

Violin II

Viola
**(Optional violin 3 available)*

Violoncello

Double Bass

Vln. I

Vln. II

Vla.

Vc.

Db.

PREVIEW ONLY

GRAND MESA STRINGS

6

Andiamo!

Vln. I

Vln. II

Vla.

Vc.

Db.

Vln. I

Vln. II

Vla.

Vc.

Db.

PREVIEW ONLY

GRAND MESA STRINGS

8 9 10

3 2

4 2

3rd pos.

4 1 4

Andiamo!

14

Musical score for strings, measures 14 through 21. The score includes parts for Violin I (Vln. I), Violin II (Vln. II), Viola (Vla.), Violoncello (Vc.), and Double Bass (Db.). Dynamics include *mf* and *f*. A large blue watermark "PREVIEW ONLY" is overlaid across the score.

PREVIEW ONLY
GRAND
MESA
STRINGS



Andiamo!

22

Vln. I *mf*

Vln. II *mf*

Vla. *mf*

Vc. *mf*

Db. *mf*

PREVIEW ONLY

GRAND MESA STRINGS



Vln. I *f* 2nd pos.

Vln. II *f*

Vla. *f*

Vc. *f*

Db. *f*

Andiamo!

Vln. I

Vln. II

Vla.

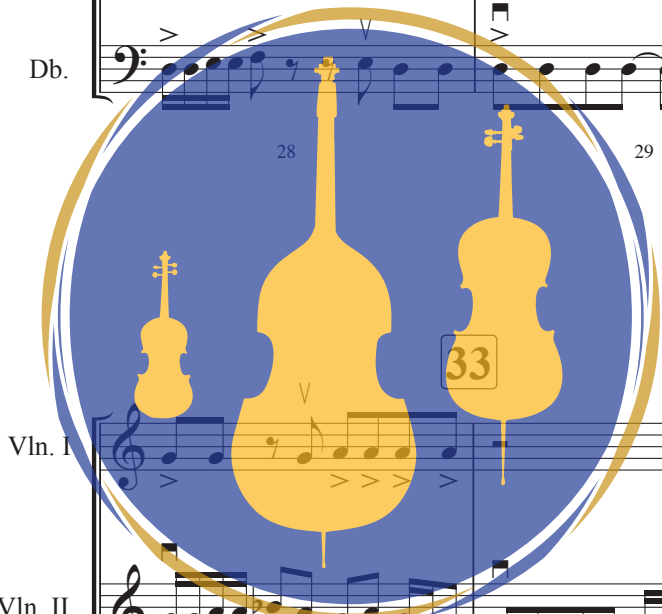
Vc.

Db.



PREVIEW ONLY

GRAND
MESA
STRINGS



Vln. I

Vln. II

Vla.

Vc.

Db.

mf

mf

mf

mf

mf

32

33

34



Andiamo!

Vln. I

Vln. II

Vla.

Vc.

Db.

f *ff*

1 2 3 4

PREVIEW ONLY

GRAND MESA STRINGS

41 Slower Andante ♩ = 108

Vln. I

Vln. II

Vla.

Vc.

Db.

f *mp* solo

38 39 40 41 42 43



Andiamo!

Vln. I

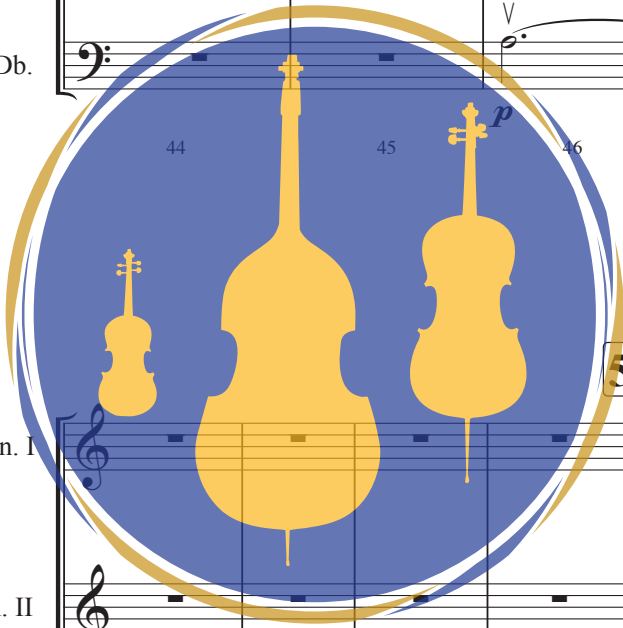
Vln. II

Vla.

Vc.

Db.

PREVIEW ONLY



GRAND MESA STRINGS

Vln. I

Vln. II

Vla.

Vc.

Db.

Andiamo!

61

Vln. I

Vln. II

Vla.

Vc.

Db.

PREVIEW ONLY

f

f

f

f

f

div. V

3

V V

3

V V

1 X 4



GRAND MESA STRINGS

Vln. I

Vln. II

Vla.

Vc.

Db.

ff

ff

ff

ff

ff

2

2

3

3

1 X 4

0

0

1

3

3

4

Andiamo!

70

Vln. I

Vln. II

Vla.

Vc.

Db.

3

4

3

unis.

pp

pp

mf

pp

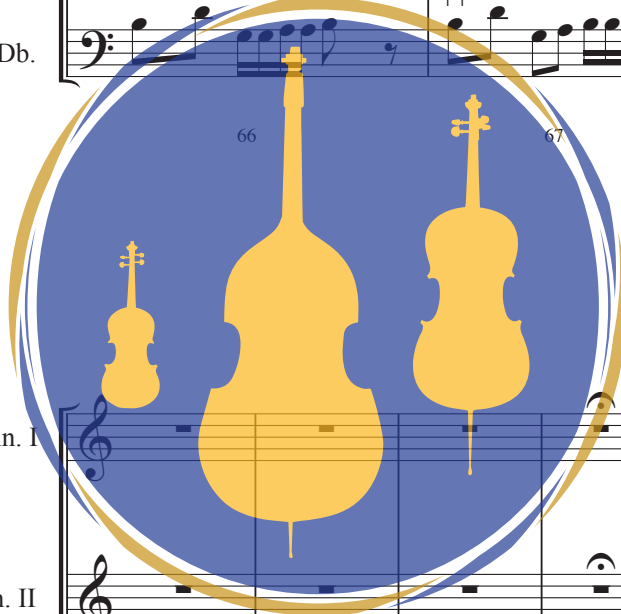
1 X 4

3

7

PREVIEW ONLY

GRAND MESA STRINGS



Fast, Andiamo!

$\text{♩} = 120$

77

Vln. I

Vln. II

Vla.

Vc.

Db.

mf

f

mf

f

mf

f

f

Andiamo!

Vln. I

Vln. II

Vla.

Vc.

Db.

78 79 80 81

PREVIEW ONLY

GRAND MESA STRINGS

Vln. I

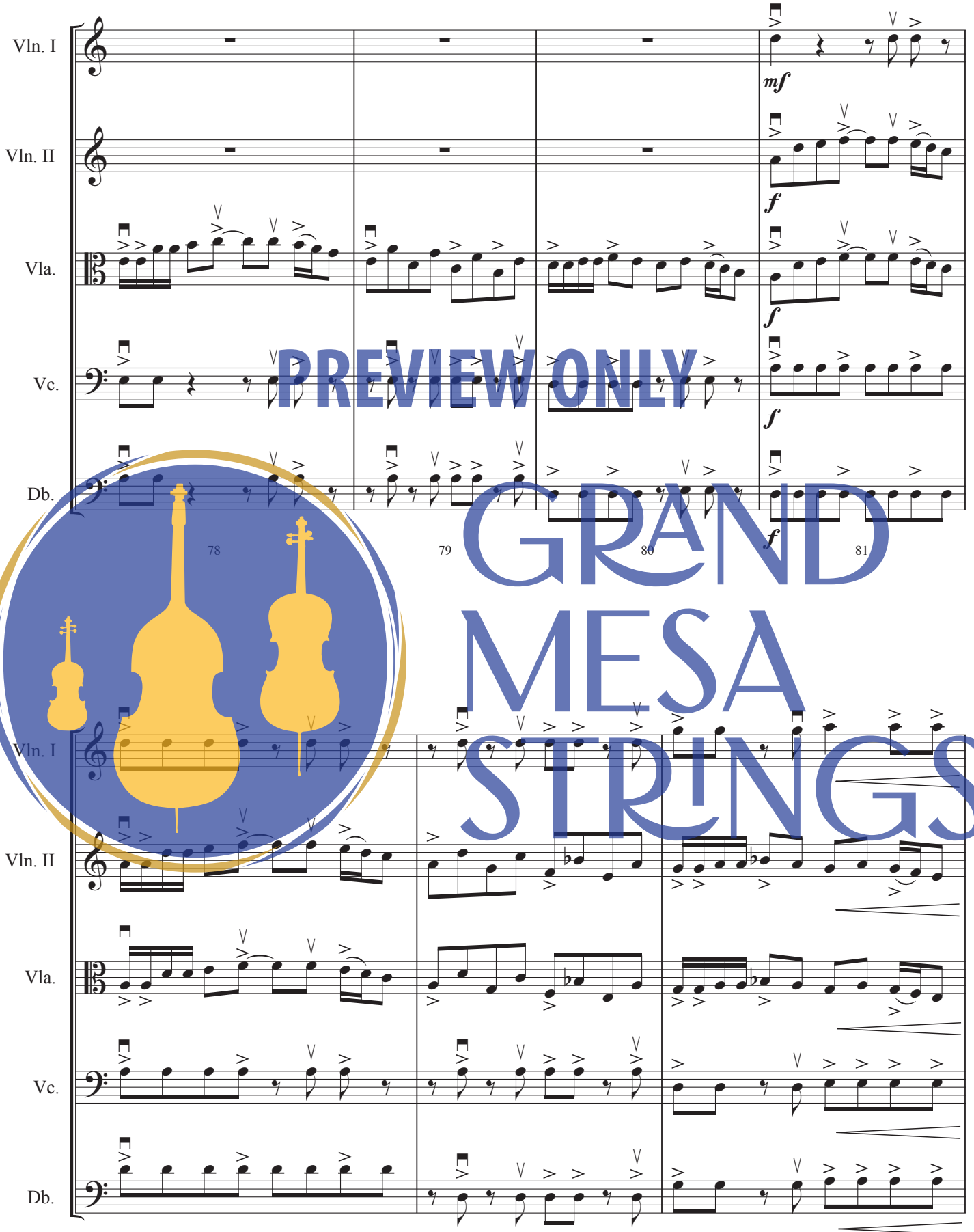
Vln. II

Vla.

Vc.

Db.

82 83 84



The image displays a musical score for a string ensemble, including Violin I, Violin II, Viola, Violoncello, and Double Bass. The score is divided into two systems, with measures 78-81 in the first system and measures 82-84 in the second. The tempo is marked 'Andiamo!'. The first system includes dynamic markings of *mf* and *f*. A large blue watermark 'PREVIEW ONLY' is overlaid across the first system. A circular logo on the left side of the page features silhouettes of a violin, viola, and cello in yellow and blue. The text 'GRAND MESA STRINGS' is written in large blue letters across the middle of the page.

Andiamo!

85

Vln. I *f*

Vln. II *f*

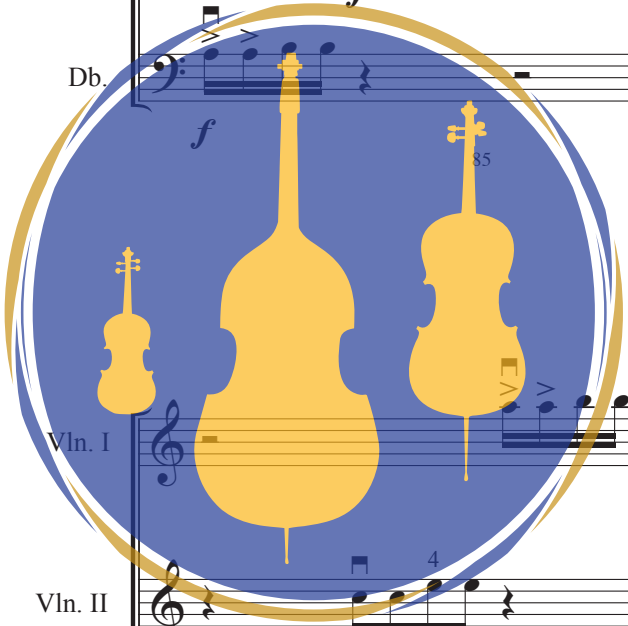
Vla. *f*

Vc. *f*

Db. *f*

PREVIEW ONLY

GRAND MESA STRINGS



Vln. I *mf*

Vln. II *mf*

Vla. *mf*

Vc. *mf*

Db. *mf*

89

Andiamo!

Vln. I *f*

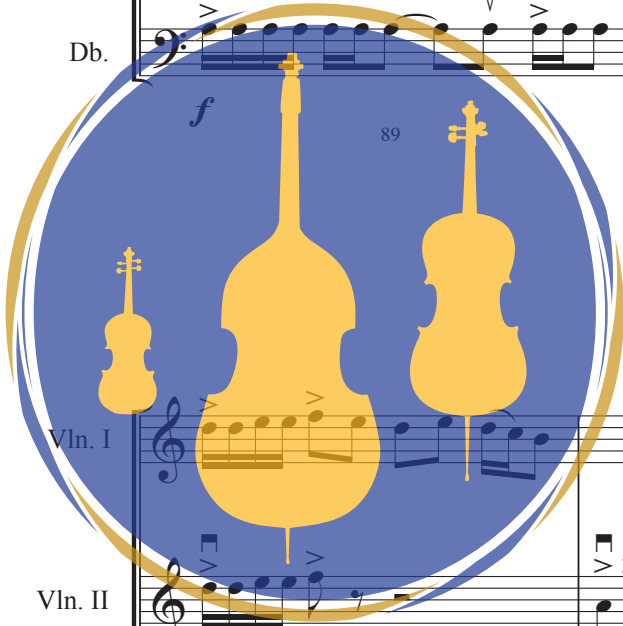
Vln. II *f*

Vla. *f*

Vc. *f*

Db. *f*

PREVIEW ONLY



**GRAND
MESA
STRINGS**

Vln. I *ff*

Vln. II *ff*

Vla. *ff*

Vc. *ff*

Db. *ff*

92 *ff* 93 94

Andiamo!

97

Vln. I

Vln. II

Vla.

Vc.

Db.

PREVIEW ONLY

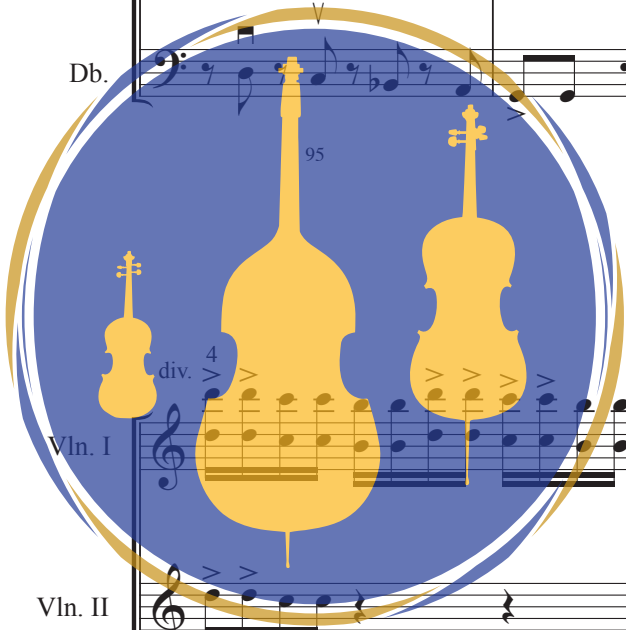
mf

mf

mf

mf

mf



**GRAND
MESA
STRINGS**

Vln. I

Vln. II

Vla.

Vc.

Db.

95

96

97

f

f

f

f

f

Andiamo!

Vln. I *ff*

Vln. II *ff*

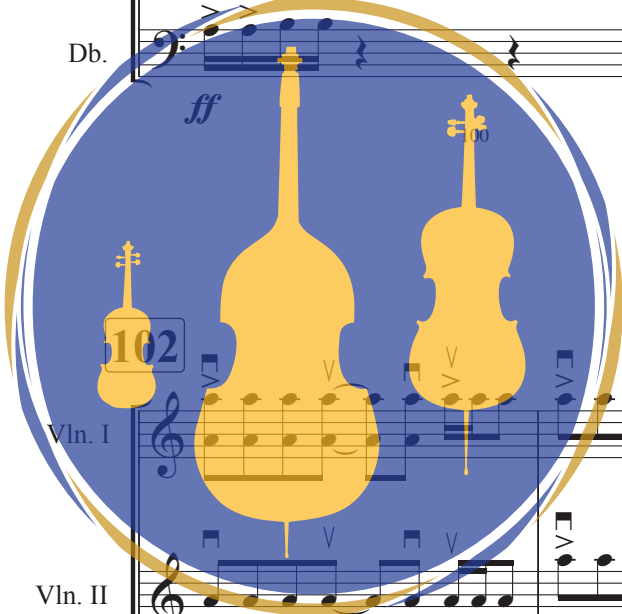
Vla. *ff*

Vc. *ff*

Db. *ff*

PREVIEW ONLY

GRAND MESA STRINGS



Vln. I

Vln. II

Vla.

Vc.

Db.