

JORDAN  FABRICS

# *Tranquility*

Finished Size 75 x 75"



**Requirements:**

9 panels measuring about 18" each

23 Jelly Roll - 2 ½" strips (15 for 4-patch blocks and 8 for star points) OR 7 fat quarters.

3 Yards - Solid white for background

1 ¼ Yards - Dark blue accent for small flange borders around panels and binding

Backing required 4 ½ yards

Trim each of the 9 panels to 17 ½" square.

**Jelly roll strips:** Select 8 jelly roll strips for the star points in the cornerstone blocks. Cut 16 – 2" squares from each for a total of 128 – 2" squares. (If you are using fat quarters, cut 2 of the fat quarters into 128 – 2" squares).

Select 15 jelly roll strips for the 4-patch blocks. Cut each strip in half so it measures about 2 ½ x 20". (If you are using fat quarters, cut 5 of them into 30 - 2 ½ x 20" strips).

**Dark blue accent:** Cut 1 @ 17 ½" WOF (width of fabric) strip. Sub-cut 36 - 1 x 17 ½" strips for flanges around the panels. Remaining fabric is for your binding.

**White background:**

Cut 3 @ 2 ½" WOF strips. Cut each strip in half so it measures about 2 ½" x 20" for the 4-patch blocks

Cut 5 @ 7 ½" WOF strips. Sub-cut to 24 - 7 ½" squares. Cut each square along **both** diagonals to create 96 side setting triangles for the sashing units.

Cut 6 @ 4 ¼" WOF strips. Sub-cut to 48 - 4 ¼" squares. Cut each square along **one** diagonal to create 96 corner triangles for the sashing units.

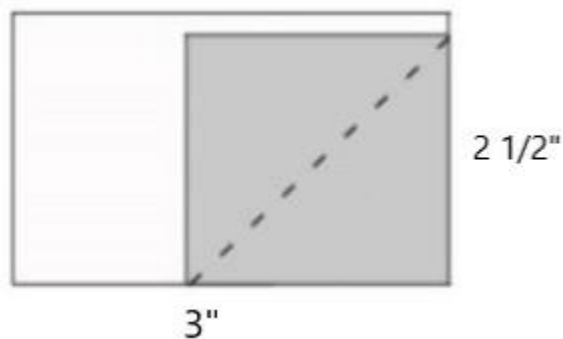
Cut 4 @ 2 ½" WOF strips. Sub-cut to 64 – 2 ½" squares for star block corners.

Cut 4 @ 3" WOF strips. Sub-cut to 64 – 3 x 2 ½" rectangles for backgrounds of star points.

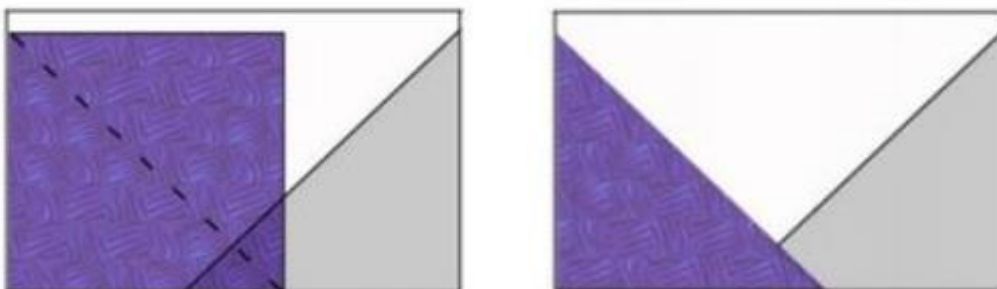
Cut 2 @ 3" WOF strips. Sub-cut to 16 – 3" squares for star centers.

**Star Blocks:**

To make the star points draw a diagonal line on the back side of all the 2" squares that you cut from the jelly roll strips.



Place one 2" square on the lower right-hand corner of a 3 x 2 ½" white background rectangle. Stitch along the drawn line. Fold the top half of the 2" square along the stitching line and steam press flat. The raw edges of the square and the rectangle should match. Open the fold and trim off the lower 2 layers leaving a ¼" seam allowance. Place a second 2" square onto the lower left corner of the rectangle unit. Stitch along the line. Fold, iron, and trim as you did with the first square. The finished rectangle unit now measures 3 x 2 ½". Repeat to make 64 units.

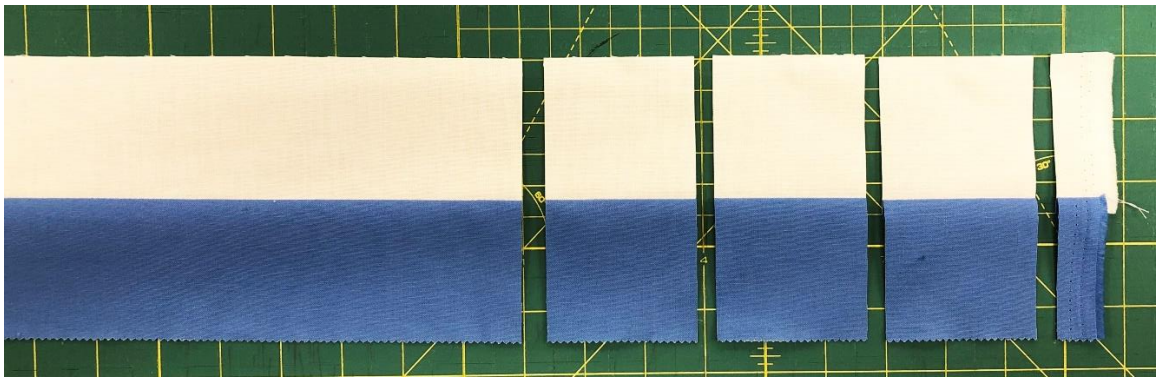


Take 4 of the star point units, 4 of the 2 1/2" squares, and 1 of the 3" squares and lay out as shown in the pictures below. Stitch together. Trim the pieced block down to measure 6" square. Repeat to make 16 star blocks.

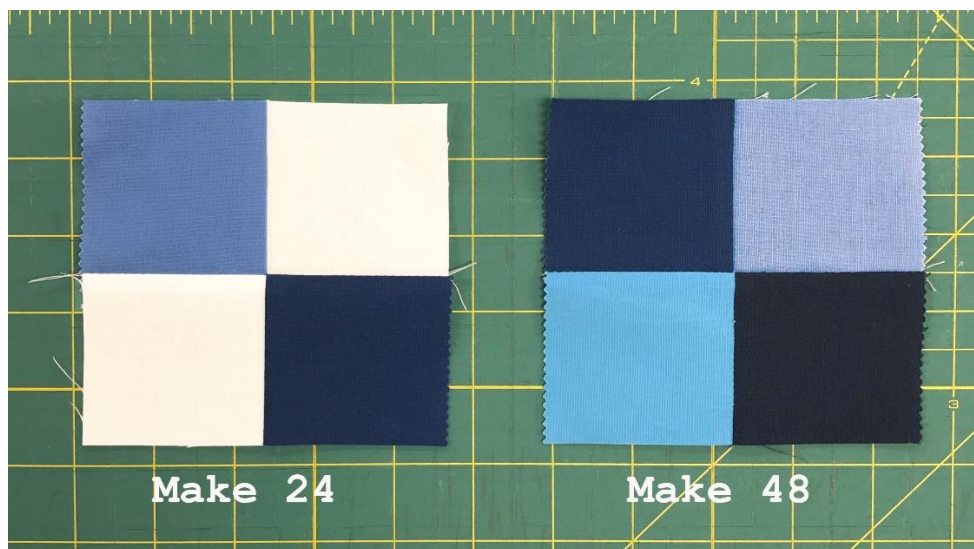


**Pieced sashing sections:**

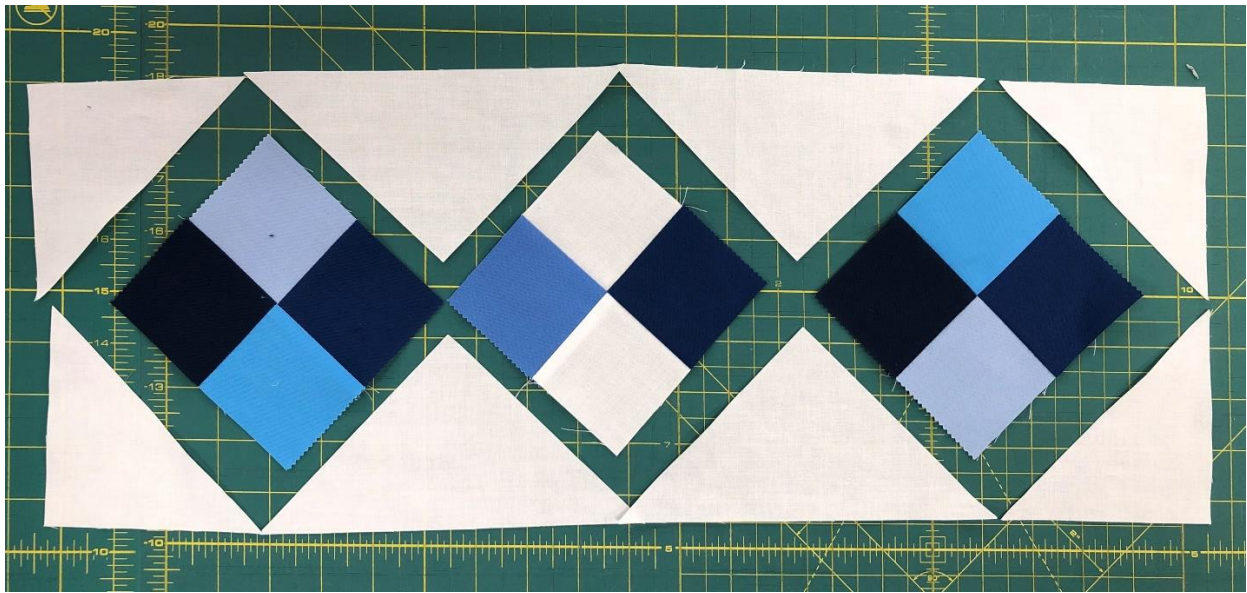
**4 Patch blocks:** Take one jelly roll half-strip and one background half-strip and stitch together along on long edge. Press the seam allowances toward the darker fabric. Cut the strip unit into 8 - 2 1/2" segments as shown below. Repeat with 5 remaining background and 5 jelly roll half-strips to get a total of 48 - 2 1/2 x 4 1/2" segments. Take 2 segments and stitch together creating a 4 1/2" block.



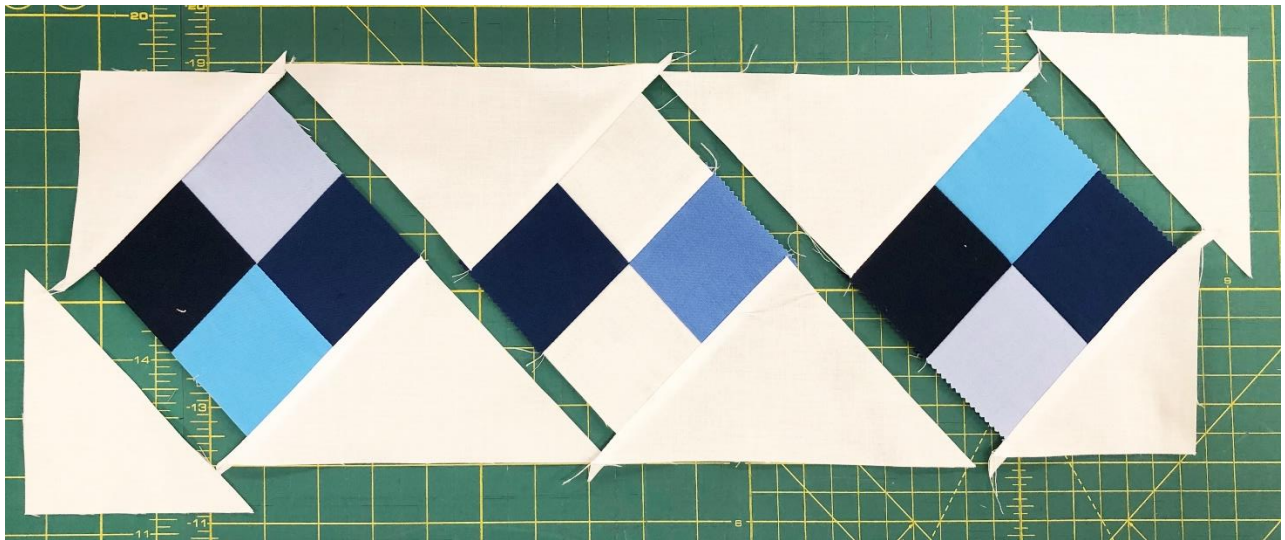
Use the same method with the remaining 24 jelly roll half-strips to create 12 strip units and 48 - 4 1/2" blocks.



Lay out the 4 patch blocks, the side setting triangles, and the corner triangles as shown below.



Stitch into rows and stitch rows together.



Trim to 6 x 17 ½”.



Iron each of the dark blue 1” flange strips in half so each measures ½” wide. With the raw edges even, machine baste the flange onto one side of a panel and trim off excess length. This is easiest if you use sew slightly less than ¼” from the edges so your stitches won’t show when you sew the sashing sections on. Repeat for all 4 sides of each panel.

Lay out the panels, the star cornerstones, and the pieced sashing sections. Stitch into rows and stitch rows together. Quilt, bind, and enjoy!



JordanFabrics.com

[info@jordanfabrics.com](mailto:info@jordanfabrics.com)

(541) 476-0214

1595 NW 6<sup>th</sup> St.

Grants Pass, OR 97526