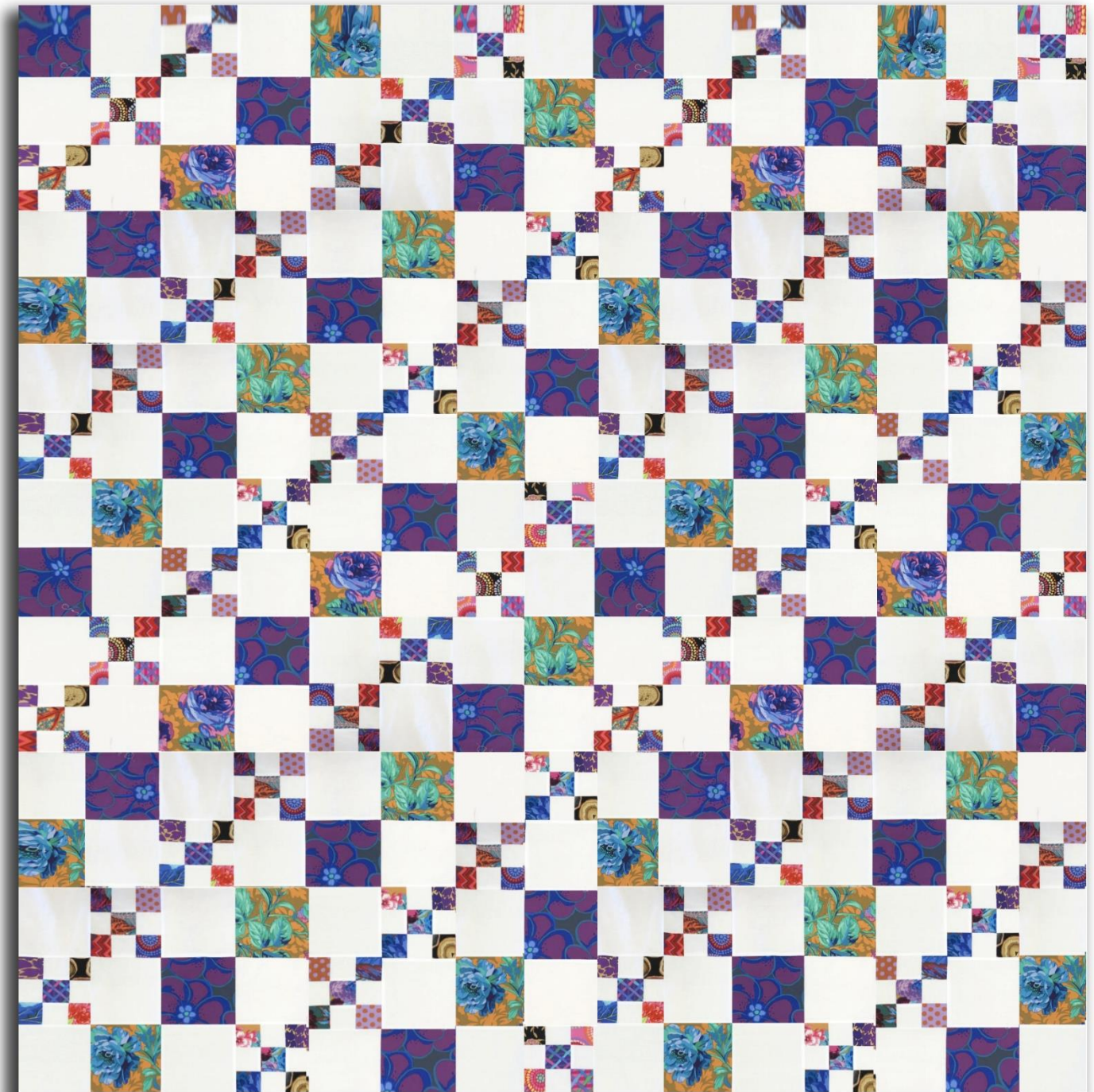


Chain Links

Designed by Donna Jordan for Jordan Fabrics

Finished Size 90 x 96"



Fabric requirements:

20 – 2 ½" Jelly Roll Strips

5 Yards Background

1 Yard Accent Fabric A

1 Yard Accent Fabric B

7/8 Yards Binding (or 10 Jelly Roll Strips)

Backing – 8 yards

Cutting Instructions:

Accent 1 – Cut 5 @ 6 ½” WOF (width of fabric). Sub-cut to 30 – 6 ½” squares.

Accent 2 – Cut 5 @ 6 ½” WOF. Sub-cut to 30 – 6 ½” squares.

Background: Cut 16 @ 2 ½” WOF.

Cut 20 @ 6 ½” WOF. Sub-cut to 120 – 6 ½” squares.

Sewing Instructions:

Select two printed 2 ½” strips and one 2 ½” background strip and make a strip unit as shown below. Press seam allowances toward the darker prints. Repeat to make 8 strip units.

Sub-cut each strip unit to 16 – 2 ½” units for a total of 128.



Take two 2 ½” background strips and one 2 ½” printed strip and make a strip unit as shown below. Press seam allowances toward the darker print. Repeat to make 4 strip units. Each should measure 6 ½” tall.

Sub-cut each strip unit to make 16 – 2 ½” units for a total of 64.



Take two of the first units and one of the second unit and stitch together as shown below. Repeat to make 60 blocks. Each should measure 6 ½" square.



Using the picture of the finished quilt as a guide, lay out the patchwork blocks, the background blocks, and the accent blocks into a 15 x 16 block quilt top.

Stitch into rows alternating the direction that the seam allowances lay. Stitch rows together.

Quilt, bind, and enjoy!



JordanFabrics.com

info@jordanfabrics.com

(541) 476-0214

1595 NW 6th St. Grants Pass, OR 97526