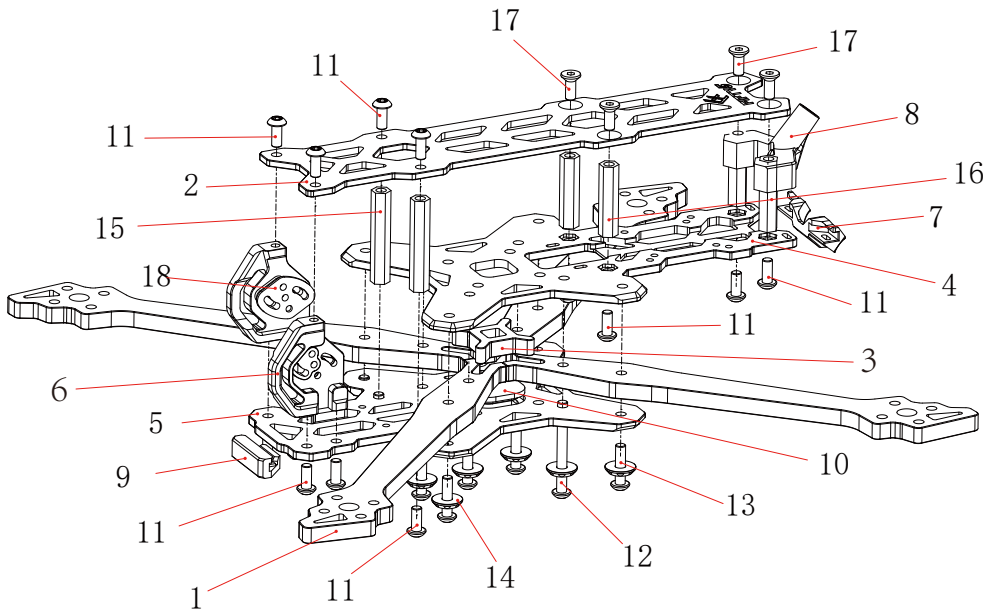


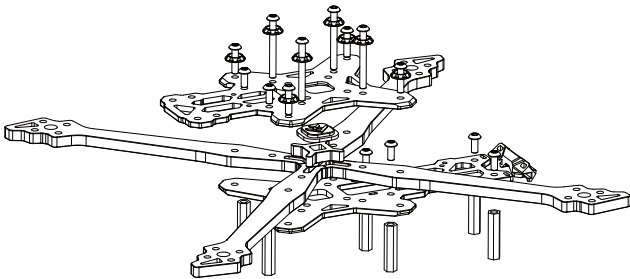
FIFTY5

Frame Instructions

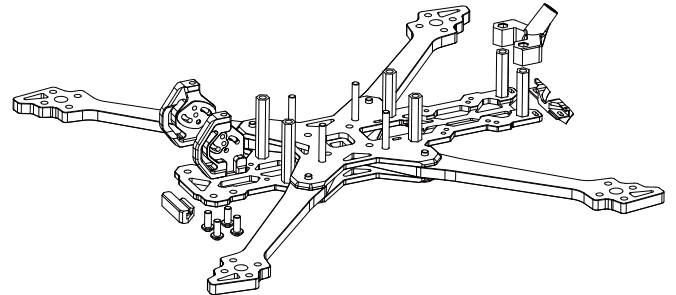


- 1. 5mm Arm x4
- 2. 2mm Top Plate x1
- 3. 5mm Keystone x1
- 4. 2.5mm Middle Plate x1
- 5. 2.5mm Bottom Plate x1
- 6. CNC Camera Mount x2
- 7. RX TPU x1
- 8. Antenna TPU x1
- 9. Front Bumper TPU x1
- 10. LED Silicone Logo x1
- 11. M3*7 Screw x14
- 12. M3*28 Screw x4
- 13. M3*11 Screw x4
- 14. Aluminum washer x8
- 15. M3*28 Hex Al.Standoff x2
- 16. M3*22 Hex Al.Standoff x4
- 17. M3*8 Countersunk Screw x4
- 18. Vibration Silicone Dampers x2

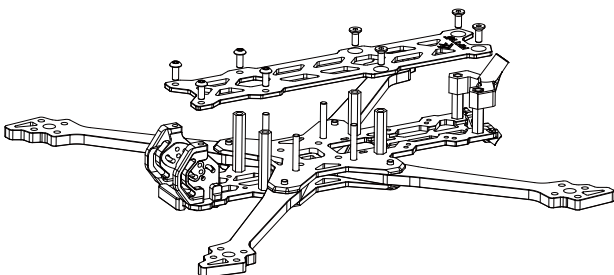
1/4



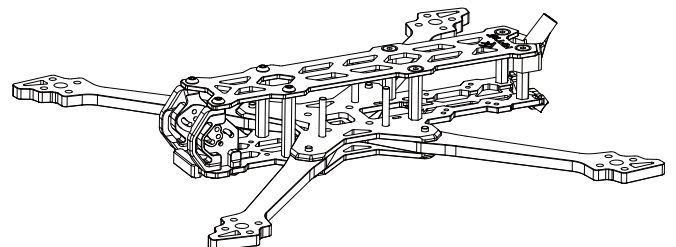
2/4



3/4

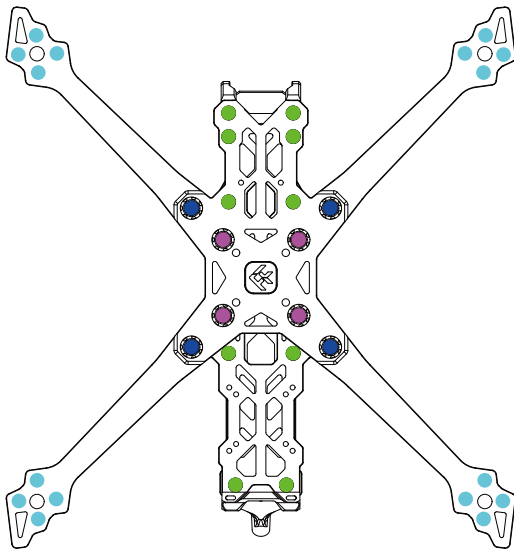
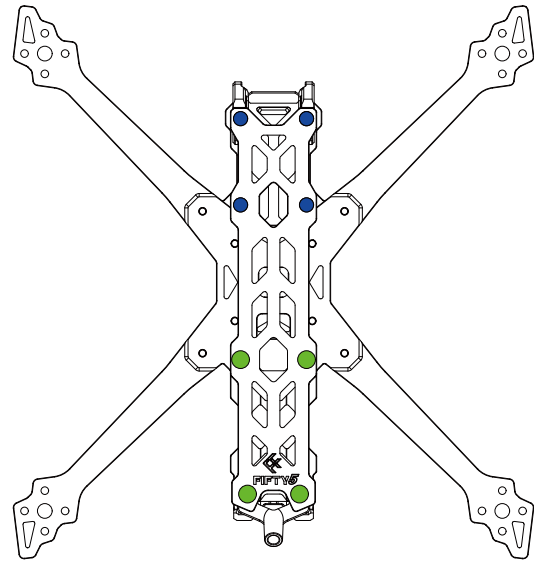


4/4



Top mounting diagram

- M3*7 Screw x4
- M3*8 Countersunk Screw x4



Bottom mounting diagram

- M3*7 Screw x10
- M3*11 Screw x4
- M3*28 Screw x4
- M3*8 Screw x16

