

powermaster

CGH

Center Mounted Gearhead Operator for Sectional Doors requiring high speed manual operation in case of power failure.

STANDARD FEATURES

- HIGH STARTING TORQUE MOTOR WITH FULL OVERLOAD PROTECTION
- WORM GEAR REDUCTION & SOLENOID BRAKE
- SOLID STATE CIRCUITRY WITH POWER AND PROGRAM FEEDBACK LEDs
- ON BOARD OPEN/CLOSE/STOP BUTTONS FOR SERVICE AND ADJUSTMENTS
- AUTO-DETECT MONITORED PHOTOBEAM FOR SIMPLIFIED INSTALLATION
- FLOOR LEVEL DISCONNECT & ELECTRICAL INTERLOCK SWITCH FOR MANUAL OPERATION IN CASE OF POWER FAILURE



*Complete selection of control stations
& accessories are available.*

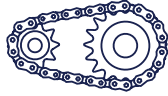


Power Door Products

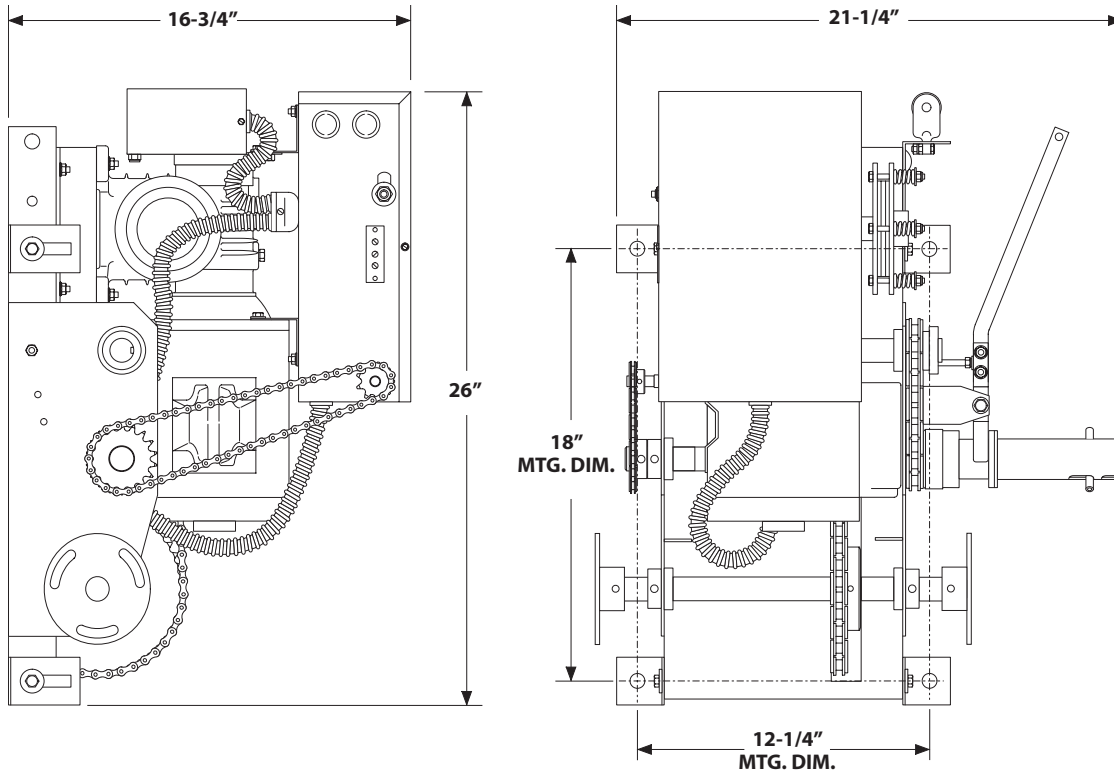
(914) 698-5083

www.PowerDoorProducts.com

SERVICING THE INDUSTRY SINCE 1969



SPECIFICATIONS & FEATURES



AVAILABLE HORSE POWER: 1/2 HP - 1 HP

POWER REQUIREMENTS: 115/230V 1Ø; OR 208/230/460V 3Ø

SELECTABLE OPERATING MODES B2, C2, D1, E2, T, TS

FIELD ADJUSTABLE BUILT IN FUNCTIONS INCLUDING: TIMER TO CLOSE, MID-STOP, DELAY ON REVERSE, LOCK BAR SENSING, MAXIMUM RUN TIME, ETC.

POSITIVE CHAIN DRIVEN ROTARY LIMIT SWITCHES

HEAVY DUTY #50 ROLLER CHAIN AND DRIVE SPROCKET INCLUDED

ADJUSTABLE TORQUE LIMITING CLUTCH

BAKED ON, BLACK POWDER COAT FINISH

SHIPPING WEIGHT: APPROX. 185 LBS

CAUTION

A moving door can cause serious injury or death! Carefully read and follow all safety instructions, precautions, and guidelines when installing and using this product. Motorized doors are for vehicles only. Pedestrians must use a separate entrance. NO ONE SHOULD CROSS THE PATH OF A MOVING DOOR! Proper reversing devices must be installed to avoid all hazards and entrapment. Eliminate all hazards and entrapment areas. Warning signs must be permanently installed and visible to traffic and pedestrians. Never allow children to operate or play with controls. Follow UL 325 and ASTM F220-02 standards. Do not install this product unless all hazards and entrapment points are protected.

