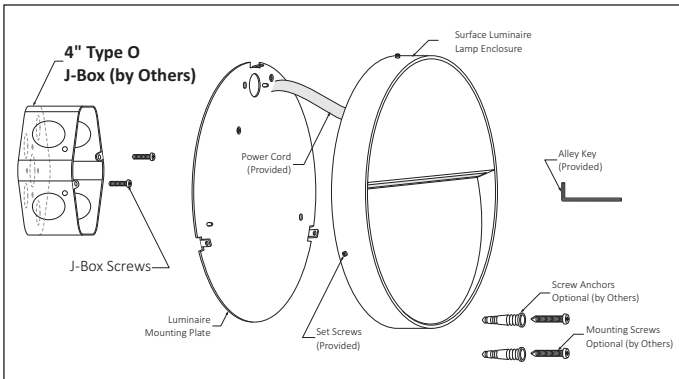


PREPARING THE LUMINAIRE

SURFACE MOUNT LUMINAIRE SLS1000 / 1400 / 1500

SAVE THIS INSTRUCTIONS



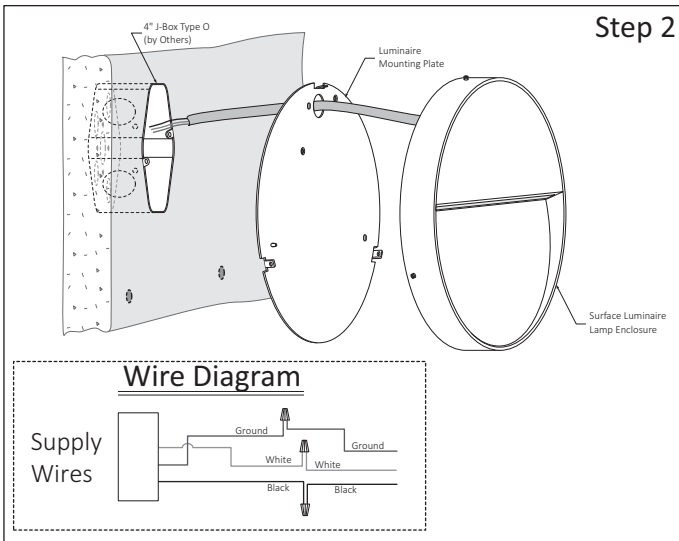
READ AND UNDERSTAND ALL INSTRUCTIONS BEFORE INSTALLATION. IF YOU ARE NOT FAMILIAR WITH THE NATIONAL ELECTRICAL CODE (NEC), CONTACT A QUALIFIED ELECTRICIAN TO INSTALL THIS LUMINAIRE.

WARNING.- Before installing this luminaire or doing any maintenance, turn off the power supply at the circuit breaker or fuse box. Turning the power off using the light switch is not sufficient to prevent electrical shock.

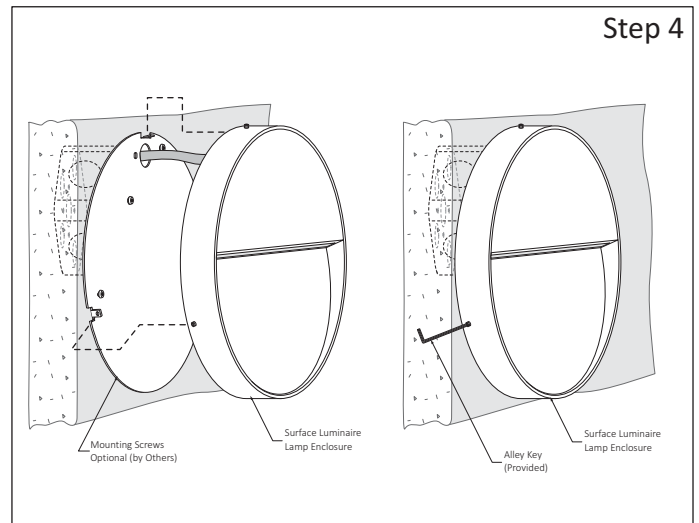
NOTE:

To re-lamp, replacement parts or additional information, contact or visit manufacturer at www.lumux.net

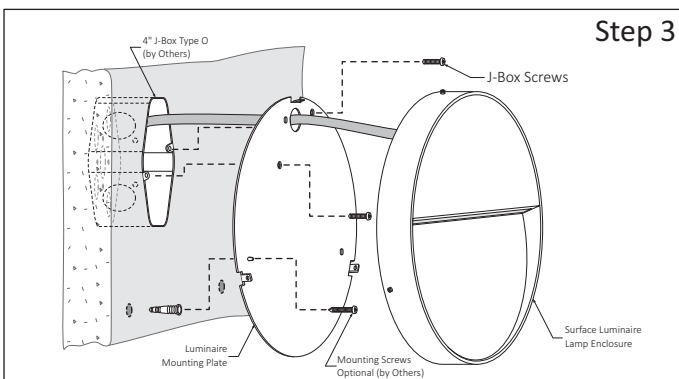
Step 1 - Get Luminaire and proper Parts for Installation:
a.- Remove Mounting Plate and prepare all parts as needed for water-tight Installation.



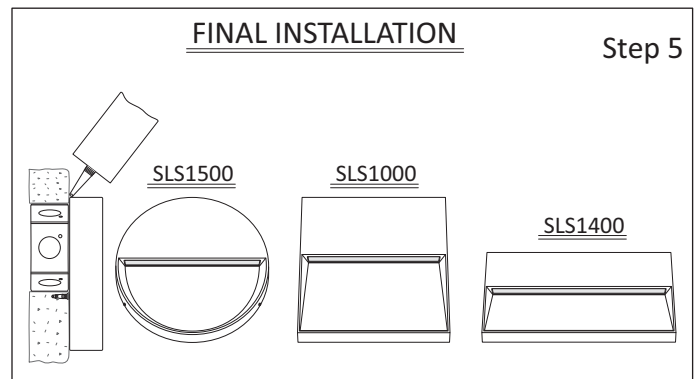
Step 2 - Make Wiring Connections:
a.- Place Luminaire close to Mounting surface, run Power Cord through the Plate hole and make electrical connection, see Wire Diagram.



Step 4 - Install Surface Mount Luminaire:
a.- Push the Power Cord into the J-Box and align Mounting Plate Taps to Luminaire grooves "set Screws" and fasten the Set Screws using the Alley Key (provided).



Step 3 - Install Luminaire Mounting Plate:
a.- Place Mounting Plate and align holes to J-Box tap holes and fasten using the Screws provided by J-Box Manufacturer. Installer may use additional mounting screws and anchors (by others).



Step 5 - Final Installation:
a.- It is recommended to apply silicone around the Luminaire Base and wall surface for a watertight seal on Outdoor Application.