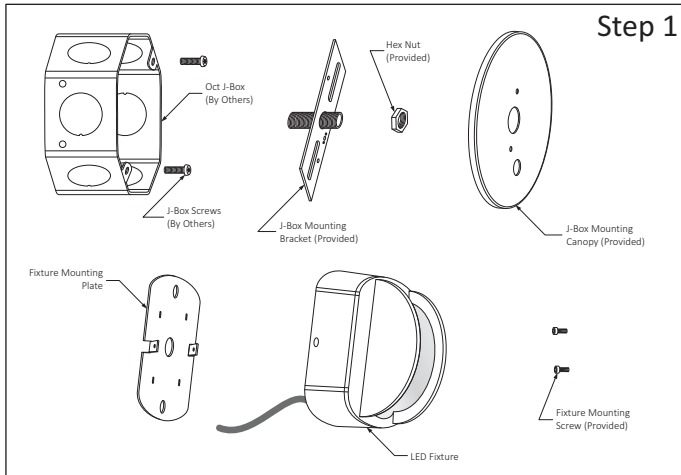


PREPARING THE LUMINAIRE

SURFACE WALL / CEILING MOUNT LUMINAIRE: WW400

SAVE THIS INSTRUCTIONS



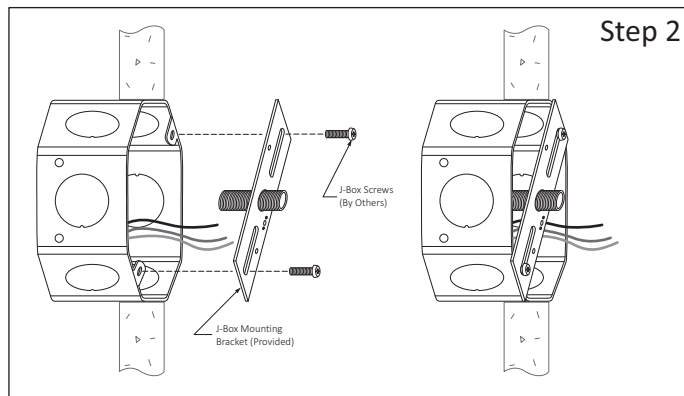
READ AND UNDERSTAND ALL INSTRUCTIONS BEFORE INSTALLATION. IF YOU ARE NOT FAMILIAR WITH THE NATIONAL ELECTRICAL CODE (NEC), CONTACT A QUALIFIED ELECTRICIAN TO INSTALL THIS LUMINAIRE.

WARNING.- Before installing this luminaire or doing any maintenance, turn off the power supply at the circuit breaker or fuse box. Turning the power off using the light switch is not sufficient to prevent electrical shock.

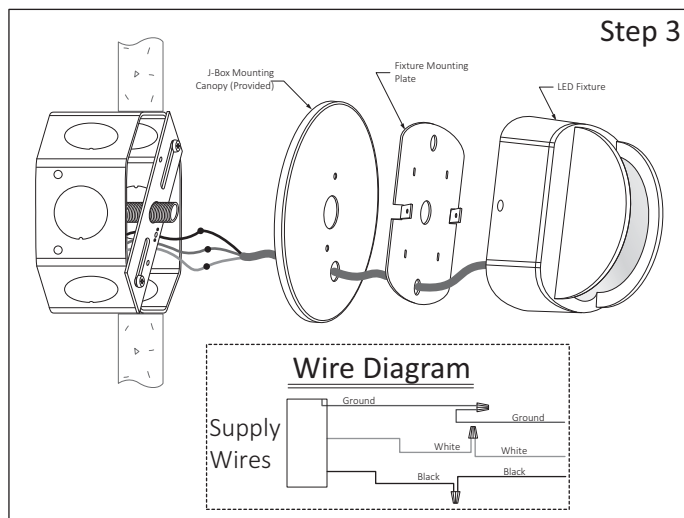
NOTE:

To re-lamp, replacement parts or additional information, contact or visit manufacturer at www.lumux.com

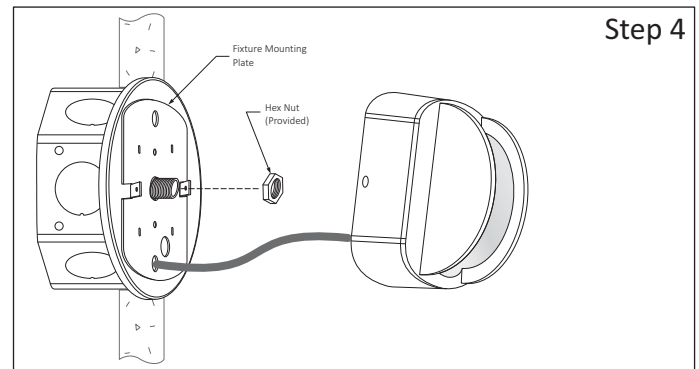
Step 1 - Disassemble Luminaire Parts for easy Installation:
a.- Remove J-Box Bracket and Mounting Plate from LED Fixture.



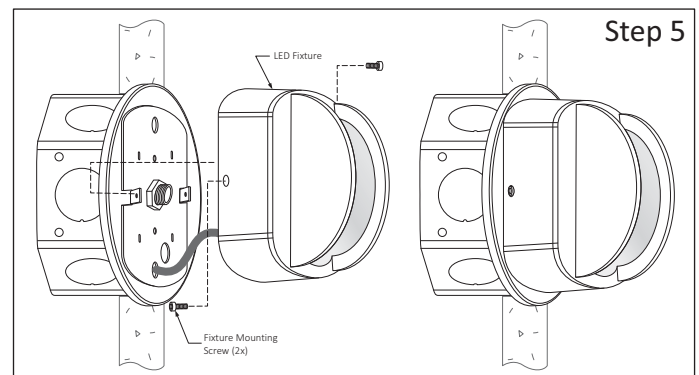
Step 2 - Install J-Box Mounting Plate:
a.- Place the J-Box Plate (provided) onto the Electrical Box and secure it using two J-Box Screws (By others).



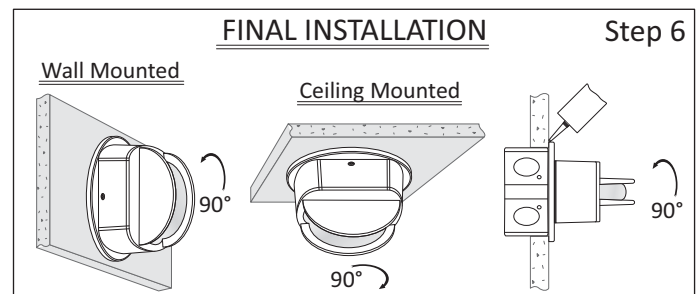
Step 3 - Make Wiring Connections:
a.- Run the Electrical Wires through all the Parts and make hard-wire connections, see Wire Diagram.



Step 4 - Install Fixture Mounting Plate:
a.- Place Mounting Plate allowing the Niple (provided) pass through the holes and fasten using the Hex Nut (provided).



Step 5 - Install LED Fixture:
a.- Place LED Fixture against the Mounting Plate, align the Taps and fasten using the two Mounting Screw (provided).



Step 6 - Final Installation:
a.- It is recommended to apply silicone around the Luminaire Base and wall surface for a watertight seal for Outdoor Application.