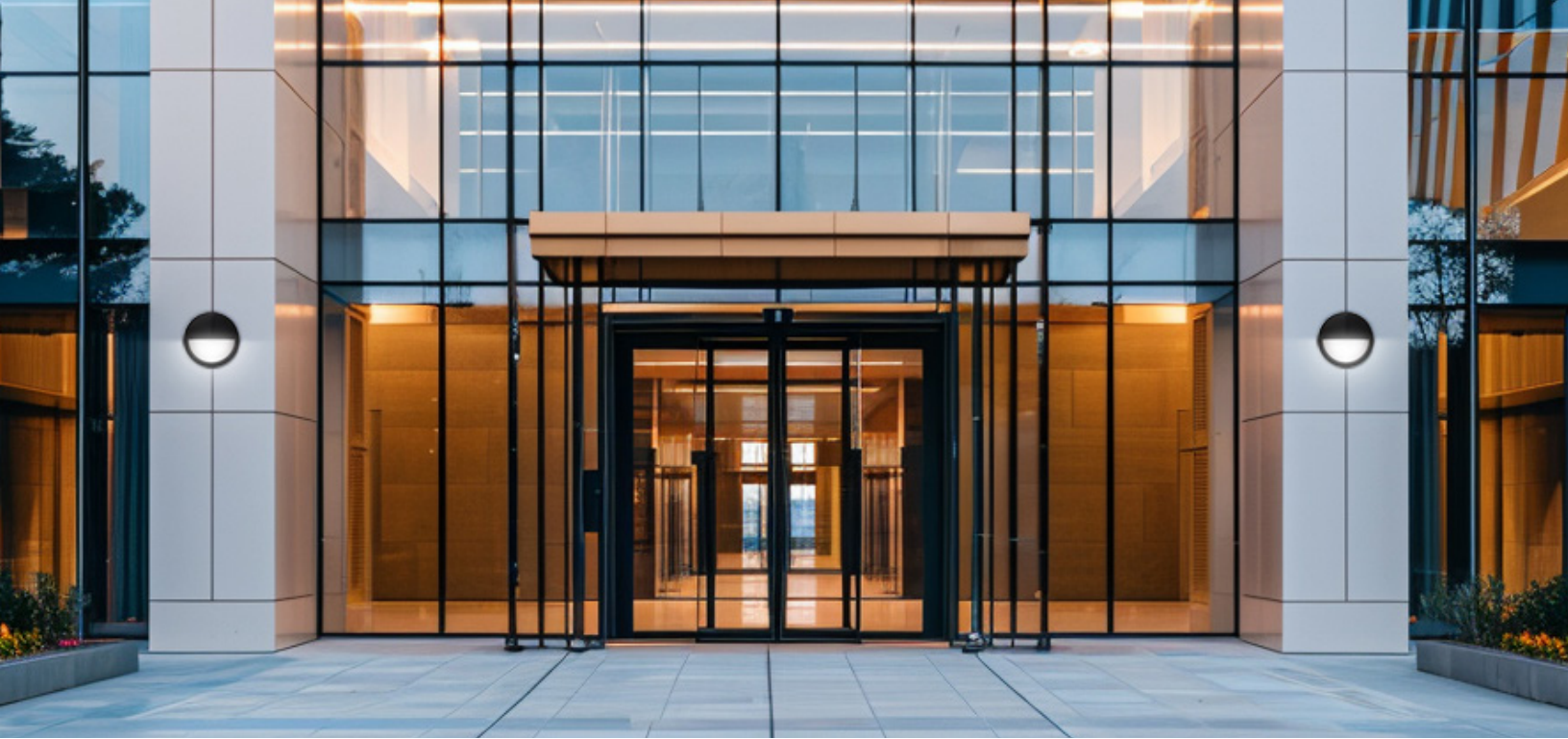


LUMUX

WALL SCNCE

WS750

DATE: _____
PROJECT: _____
FIRM: _____
CATALOG NO.: _____
COMMENTS: _____



WS750 from Lumux is an elegant, architectural wall sconce that excels at defining spaces, both during the day and at night.

WS750 offers a distinctively contemporary design suited for wall or column installation. Ideal for illuminating porches and porticos, as a wall accent, and for lighting walks alongside buildings, WS750 is a powerful outdoor LED solution with an ADA design. WS750 is constructed from heavy-duty diecast aluminum, providing durability that meets the highest standards. WS700 Series luminaires are part of a varied collection of surface mount luminaires that includes the larger WS500 Series.

minimum **1,350** lm **36**W minimum **38** lm/W

LUMUX LIGHTING

7803 Industry Ave, Pico Rivera, CA 90660
sales@lumux.com | 562-801-5100

Content of specification sheet subject to change

LUMUX

WALL SCNCE WS750

WS750 is a high-efficacy surface mount luminaire with optional 0-10v dimming, occupancy sensor, and photocell daylight sensor.

Ordering Guide

Catalog No.	Wattage	LED Color	Color Temp ¹	Voltage	Finish	Options ²
WS750	25W	White	2700K	120-277v	Black	<input type="checkbox"/> 0-10v Dimming <input type="checkbox"/> Photocell <input type="checkbox"/> Occupancy Sensor
	36W		3000K		White	
			3500K		Silver	
			4000K		Bronze	
					Custom RAL ²	

¹Consult factory for additional options;

²Consult factory for additional pricing.

Catalog No.: _____

Performance Specifications WS750 36W	
Flux 1,350 lm (4000K)	LER 38 lm/W (4000K)
Power 36W	120-277v input voltage
Starting temp. rated to -20°F	Photocell option
0-10v dimming driver option	Occupancy Sensor option
Lumen Maintenance*: L70 100K hrs	

Environmental Specifications	
BUG rating 36W: B0-U3-G2	BUG rating 25W: B0-U3-G1
CRI 80	Color temperature options
IP65	ETL listed for wet-locations
Effective Projected Area: < 1 sq.ft.	Marine Grade option
5-year limited warranty	Made in the USA

Delivered Lumens & Wattage per color temperature:

	2700K	3000K	3500K	4000K	WATTS
WS750 - 25W	700 lm	700 lm	700 lm	700 lm	25W
WS750 - 36W	1350 lm	1350 lm	1350 lm	1350 lm	36W



Housing: Heavy-duty construction of corrosion resistant, low-copper diecast aluminum, secured with vandal-resistant, stainless steel screws.

Lens: Sealed one-piece, shatter-proof, UV-rated polycarbonate.

Gasket: Closed-cell silicone foam gasket that seals out moisture, dust, and insects, for weather-tight operation.

Mounting: Surface mounting to wall, column or ceiling. Mounting bracket provided fits to any standard 3" or 4" J-Box.

Installation: Please refer to installation instructions.

Finish: Zinc polyester powder coat finish in black, white, silver, bronze, or any custom RAL color. Consult factory for marine grade or anti-microbial finish.

Dimensions

*Lumen Maintenance Report: Nichia
Test Documentation No.: NFSW757GT-V3

Content of specification sheet subject to change

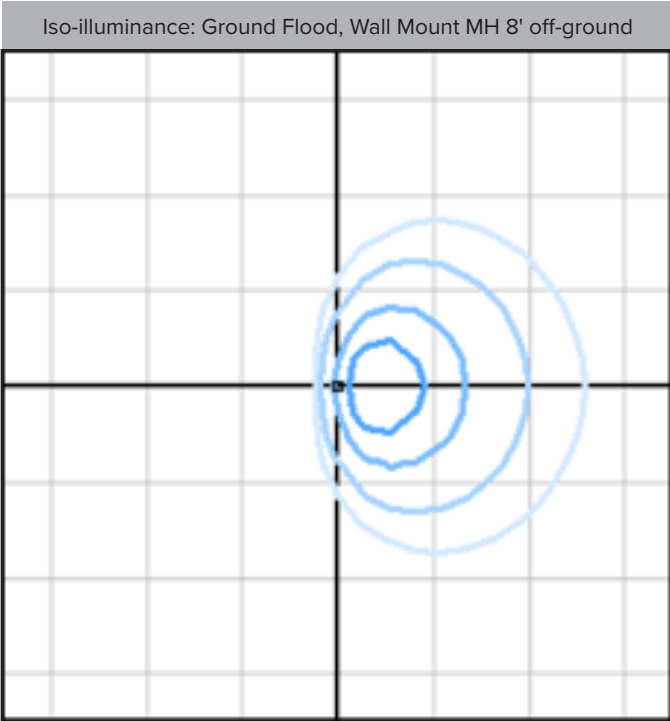
LUMUX

WALL SCONCE

WS750

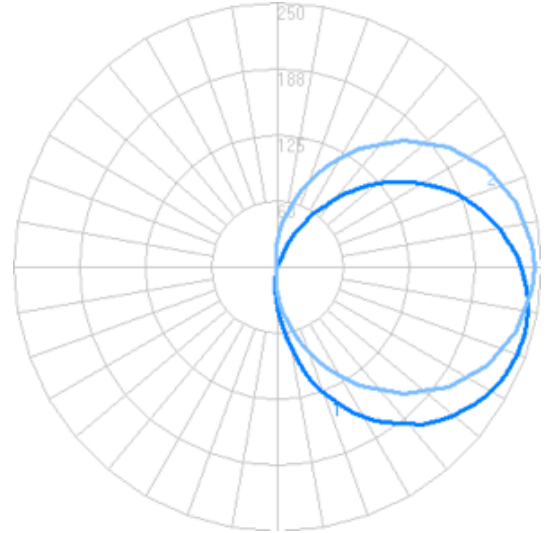
Photometry	IESNA: LM-63-2002
TEST: 14165719.11	TEST LAB: UL LLC
LUMINAIRE: WS700-25W	DATE: 2022-02-21
IES Classification: Type IV	Longitudinal Class: Very Short
Luminaire Lumens	716 (4000K)
Luminaire Efficacy Rating (LER)	29 lm/W
Total Luminaire Watts	24.5521W
Upward Waste Light Ratio	0.36
Max. Candela	243.5
Max. Cd. < 90° Vertical	243.5
Max. Cd. (At 90 Deg. Vert.)	230.8 (32.2% Luminaire)
Max. Cd. (80 to <90 Deg. Vert.)	241.4 (33.7% Luminaire)
Cutoff Classification: N.A.	Wall Mount BUG Rating: B0-U3-G1

Technical aspects may change without notice.
 *Estimation at 1250mA reduced from 1400mA per IES report.



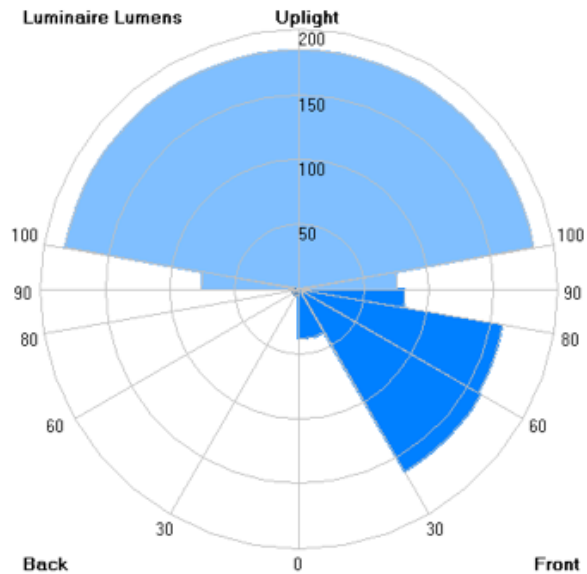
Foot-candles: 0.1, 0.2, 0.5, 1 | Grid spacing 10'

Candela



Zonal Lumens - Wall Mount

LCS	Zone	Lumens	%Lum.
FL	(0-30)	38.2	5.3
FM	(30-60)	162.0	22.6
FH	(60-80)	159.7	22.3
FVH	(80-90)	81.3	11.4
BL	(0-30)	5.1	0.7
BM	(30-60)	5.5	0.8
BH	(60-80)	3.0	0.4
BVH	(80-90)	1.1	0.2
UL	(90-100)	75.7	10.6
UH	(100-180)	184.0	25.7
Total		716	100



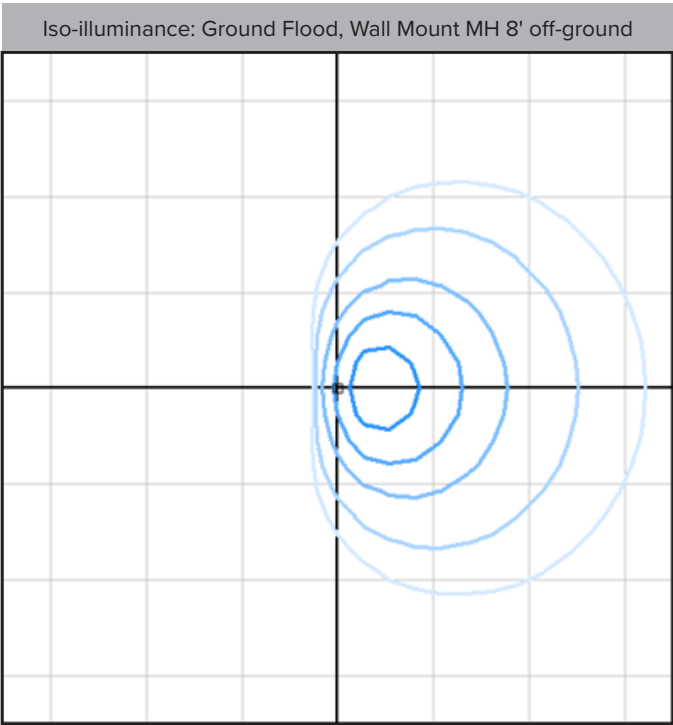
Content of specification sheet subject to change

LUMUX

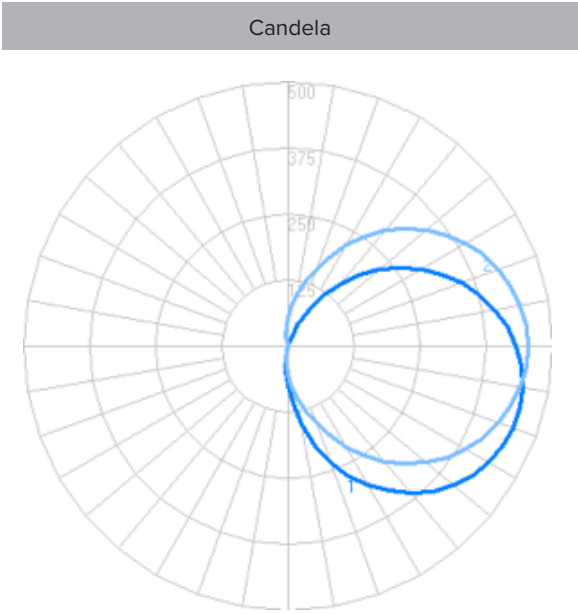
WALL SCNCE WS750

Photometry	IESNA: LM-63-2002
TEST: L032310504	TEST LAB: Light Laboratory Inc.
LUMINAIRE: WS700-35W	DATE: 2023-09-03
IES Classification: Type IV	Longitudinal Class: Very Short
Luminaire Lumens	1343 (4000K)
Luminaire Efficacy Rating (LER)	38 lm/W
Total Luminaire Watts	35.29W
Upward Waste Light Ratio	0.36
Max. Candela	455
Max. Cd. < 90° Vertical	455
Max. Cd. (At 90 Deg. Vert.)	431 (32.1% Luminaire)
Max. Cd. (80 to <90 Deg. Vert.)	452 (33.7% Luminaire)
Cutoff Classification: N.A.	Wall Mount BUG Rating: B0-U3-G2

Technical aspects may change without notice.
*Estimation at 1250mA reduced from 1400mA per IES report.

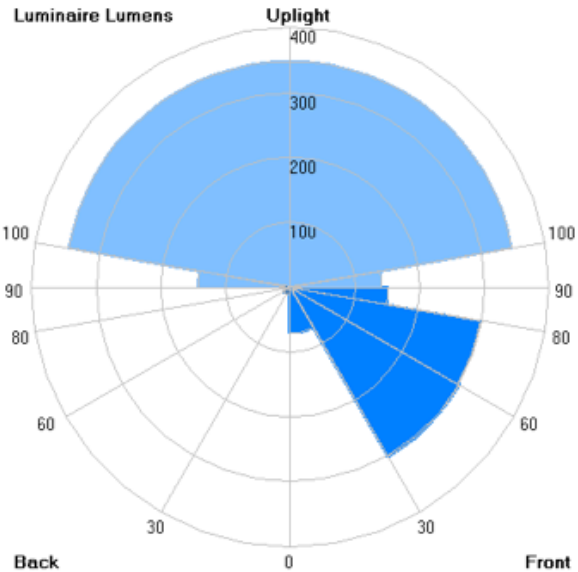


Foot-candles: 0.1, 0.2, 0.5, 1, 2 | Grid spacing 10'



Zonal Lumens - Wall Mount

LCS	Zone	Lumens	%Lum.
FL	(0-30)	71.1	5.3
FM	(30-60)	301.7	22.5
FH	(60-80)	298.5	22.2
FVH	(80-90)	151.6	11.3
BL	(0-30)	10.9	0.8
BM	(30-60)	11.2	0.8
BH	(60-80)	6.2	0.5
BVH	(80-90)	2.4	0.2
UL	(90-100)	141.6	10.5
UH	(100-180)	347.8	25.9
Total		1343	100



Content of specification sheet subject to change

LUMUX

WALL SCNCE

WS500 & WS700 SERIES COLLECTION



WS500 & WS500-ADA 14" housing
impact-resistant opal polycarbonate diffuser



WS700 10.7" housing
impact-resistant opal polycarbonate diffuser



WS520 14" housing
protective window grille over opal diffuser



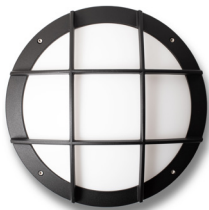
WS740 10.7" housing
protective window grille over opal diffuser



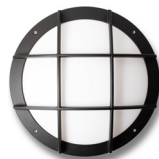
WS533 14" housing
protective slatted grille over opal diffuser



WS733 10.7" housing
protective slatted grille over opal diffuser



WS534 14" housing
protective nautical grille over opal diffuser



WS734 10.7" housing
protective nautical grille over opal diffuser



WS550 14" housing
cutoff hood over opal polycarbonate diffuser



WS750 10.7" housing
cutoff hood over opal polycarbonate diffuser