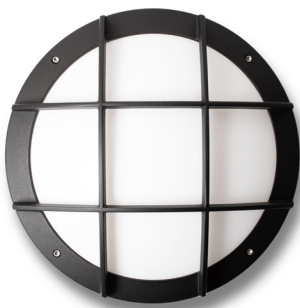


# LUMUX

## WALL SCONCE

WS734

DATE: \_\_\_\_\_  
PROJECT: \_\_\_\_\_  
FIRM: \_\_\_\_\_  
CATALOG NO.: \_\_\_\_\_  
COMMENTS: \_\_\_\_\_



**WS734 from Lumux is an elegant, architectural ADA wall sconce that excels at defining spaces, both during the day and at night.**

WS734 offers a distinctively contemporary ADA design suited for wall, column or ceiling installation. Ideal for illuminating porches and porticos, as a wall accent, and for lighting walks alongside buildings, WS734 is a powerful outdoor LED solution. WS734 is constructed from heavy-duty diecast aluminum, providing durability that meets the highest standards. WS700 Series luminaires are part of a varied collection of surface mount luminaires that includes the larger WS500 Series.

up to **2,500** lm      **41**w      minimum **61** lm/W

Content of specification sheet subject to change

# LUMUX

## WALL SCNCE WS734

WS734 is a high-efficacy ADA surface mount luminaire with optional 0-10v dimming, occupancy sensor and photocell daylight sensor.

### Ordering Guide

Catalog No.	Wattage	LED Color	Color Temp <sup>1</sup>	Voltage	Finish	Options <sup>2</sup>
WS734	25W	White	2700K	120-277v	Black	<input type="checkbox"/> 0-10v Dimming <input type="checkbox"/> Photocell <input type="checkbox"/> Occupancy Sensor
	41W		3000K		White	
			3500K		Silver	
			4000K		Bronze	
					Custom RAL <sup>2</sup>	

<sup>1</sup>Consult factory for additional options

<sup>2</sup>Consult factory for additional pricing

Catalog No.: \_\_\_\_\_

Performance Specifications WS734 41W	
Flux 2,500 lm (4000K)	LER 61 lm/W (4000K)
Power 41W	120-277v input voltage
Starting temp. rated to -20°F	Photocell option
0-10v dimming driver option	Occupancy Sensor option
Lumen Maintenance*: L70 100K hrs	

Environmental Specifications	
BUG rating 41W: B0-U4-G3	BUG rating 25W: B0-U4-G2
CRI 80	Color temperature options
IP65	ETL listed for wet-locations
Effective Projected Area: < 1 sq.ft.	Marine Grade option
5-year limited warranty	Made in the USA

### Delivered Lumens & Wattage per color temperature:

	2700K	3000K	3500K	4000K	WATTS
WS734 - 25W	1500 lm	1500 lm	1500 lm	1500 lm	25W
WS734 - 41W	2500 lm	2500 lm	2500 lm	2500 lm	41W

For higher lumen packages, please consult the Lumux sales team.



**Housing:** Heavy-duty construction of corrosion resistant, low-copper diecast aluminum, secured with vandal-resistant, stainless steel screws.

**Lens:** Sealed one-piece, shatter-proof, UV-rated polycarbonate.

**Gasket:** Closed-cell silicone foam gasket that seals out moisture, dust, and insects, for weather-tight operation.

**Mounting:** Surface mounting to wall, column or ceiling. Mounting bracket provided fits to any standard 3" or 4" J-Box.

**Installation:** Please refer to installation instructions.

**Finish:** Zinc polyester powder coat finish in black, white, silver, bronze, or any custom RAL color. Consult factory for marine grade or anti-microbial finish.

### Dimensions

\*Lumen Maintenance Report: Nichia  
Test Documentation No.: NFSW757GT-V3

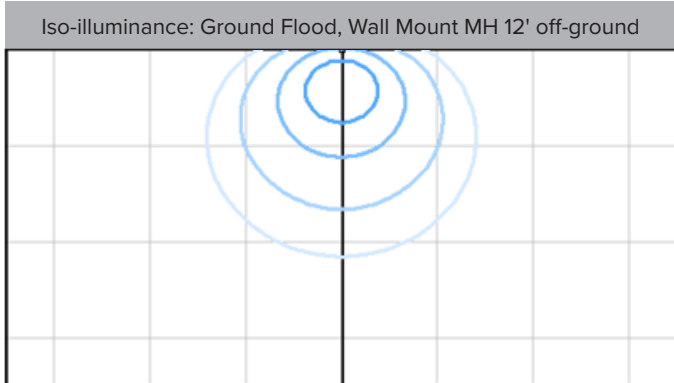
Content of specification sheet subject to change

# LUMUX

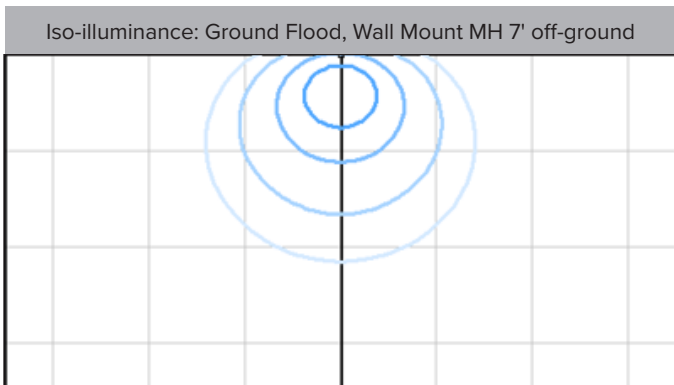
## WALL SCNCE WS734

Photometry	IESNA: LM-63-2002
TEST: 14507470.01	TEST LAB: UL LLC
LUMINAIRE: WS700	DATE: 2022-09-30
IES Classification: n/a	Longitudinal Class: n/a
Luminaire Lumens	2504 (4000K)
Luminaire Efficacy Rating (LER)	61 lm/W
Total Luminaire Watts	41.05W
Upward Waste Light Ratio	0.50
Max. Candela	774.2
Max. Cd. < 90° Vertical	771.3
Max. Cd. (At 90 Deg. Vert.)	771 (30.8% Luminaire)
Max. Cd. (80 to <90 Deg. Vert.)	771.3 (30.8% Luminaire)
Cutoff Classification: N.A.	Wall Mount BUG Rating: B0-U4-G3

Technical aspects may change without notice.  
\*Estimation at 1250mA reduced from 1400mA per IES report.

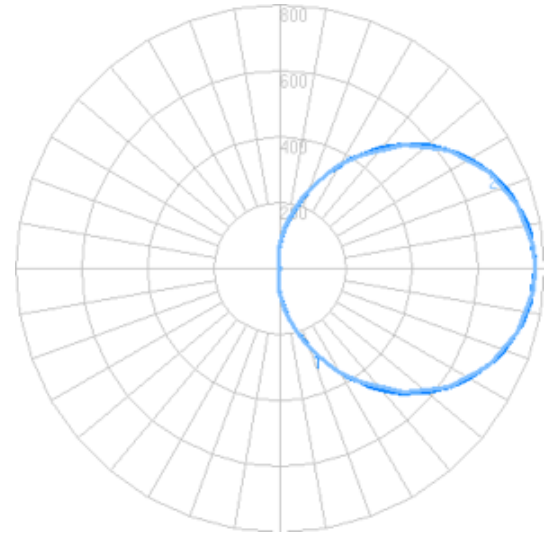


Foot-candles: 0.1, 0.2, 0.5, 1 | Grid spacing 20'



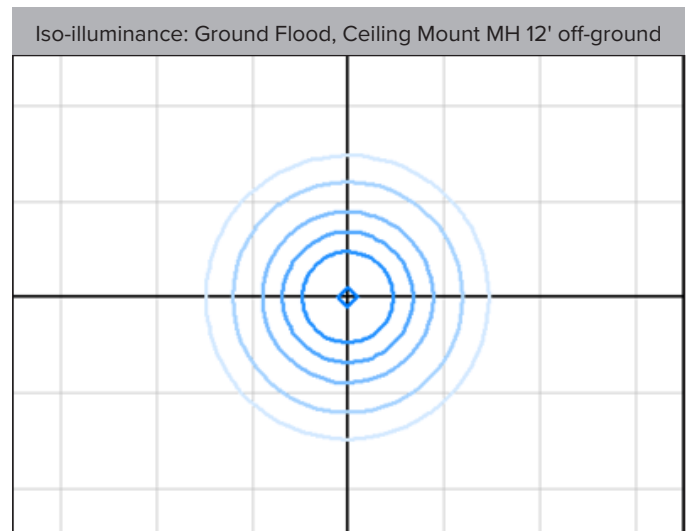
Foot-candles: 0.1, 0.2, 0.5, 1 | Grid spacing 20'

### Candela



### Zonal Lumens - Wall Mount

LCS	Zone	Lumens	%Lum.
FL	(0-30)	77.2	3.1
FM	(30-60)	402.7	16.1
FH	(60-80)	469.6	18.7
FVH	(80-90)	264.7	10.6
BL	(0-30)	12.7	0.5
BM	(30-60)	16.6	0.7
BH	(60-80)	11.8	0.5
BVH	(80-90)	5.9	0.2
UL	(90-100)	270.5	10.8
UH	(100-180)	972.8	39.8
Total		2504.5	100



Foot-candles: 0.1, 0.2, 0.5, 1, 2, 5 | Grid spacing 20'

Content of specification sheet subject to change

# LUMUX

## WALL SCNCE

### WS500 & WS700 SERIES COLLECTION



**WS500 & WS500-ADA 14" housing**  
impact-resistant opal polycarbonate diffuser



**WS700 10.7" housing**  
impact-resistant opal polycarbonate diffuser



**WS520 14" housing**  
protective window grille over opal diffuser



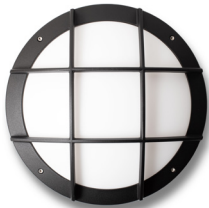
**WS740 10.7" housing**  
protective window grille over opal diffuser



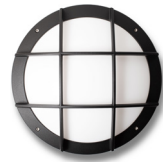
**WS533 14" housing**  
protective slatted grille over opal diffuser



**WS733 10.7" housing**  
protective slatted grille over opal diffuser



**WS534 14" housing**  
protective nautical grille over opal diffuser



**WS734 10.7" housing**  
protective nautical grille over opal diffuser



**WS550 14" housing**  
cutoff hood over opal polycarbonate diffuser



**WS750 10.7" housing**  
cutoff hood over opal polycarbonate diffuser