

LUMUX

WALL SCNCE

WS550

DATE: _____
PROJECT: _____
FIRM: _____
CATALOG NO.: _____
COMMENTS: _____



WS550 from Lumux is an elegant, architectural wall sconce that excels at defining spaces, both during the day and at night.

WS550 offers a distinctively contemporary design suited for wall, column or ceiling installation. Ideal for illuminating porches and porticos, as a wall accent, and for lighting walks alongside buildings, WS550 is a powerful outdoor LED solution. WS550 is constructed from heavy-duty diecast aluminum, providing durability that meets the highest standards. WS500 Series luminaires are part of a varied collection of surface mount luminaires that includes the smaller WS700 Series.

up to **1,550** lm **50**W up to **34** lm/W

LUMUX LIGHTING

7803 Industry Ave, Pico Rivera, CA 90660
sales@lumux.com | 562-801-5100

Content of specification sheet subject to change

LUMUX

WALL SCNCE WS550

WS550 is a high-efficacy surface mount luminaire with optional integral battery pack, occupancy sensor, and photocell daylight sensor.

Ordering Guide

Catalog No.	Wattage	LED Color	Color Temp ¹	Voltage	Finish	Options ²
WS550	21W	White	2700K	120-277v	Black	<input type="checkbox"/> 0-10v Dimming <input type="checkbox"/> Photocell <input type="checkbox"/> Occupancy Sensor <input type="checkbox"/> Integral Battery Pack
	46W		3000K		White	
			3500K		Silver	
			4000K		Bronze	
					Custom RAL ²	

¹Consult factory for additional options;
color temp applies to white light only.

²Consult factory for additional pricing.

Catalog No.: _____

Performance Specifications WS550 46W	
Flux 1,550 lm (4000K)	LER 34 lm/W (4000K)
Power 46W	120-277v input voltage
Starting temp. rated to -20°F	Photocell option
0-10v dimming driver option	Occupancy Sensor option
Lumen Maintenance*: L70 100K hrs	Integral Battery Pack option

Environmental Specifications	
BUG rating 46W: B0-U3-G2	BUG rating 21W: B0-U3-G2
CRI 80	Color temperature options
IP65	ETL listed for wet-locations
Effective Projected Area: < 1 sq.ft.	Marine Grade option
5-year limited warranty	Made in the USA

Delivered Lumens & Wattage per color temperature:

	2700K	3000K	3500K	4000K	WATTS
WS550 - 21W	500 lm	550 lm	600 lm	625	21W
WS550 - 46W	1350 lm	1400 lm	1500 lm	1550 lm	46W

For higher lumen packages, please consult the Lumux sales team.

Housing: Heavy-duty construction of corrosion resistant, low-copper diecast aluminum, secured with vandal-resistant, stainless steel screws.

Lens: Sealed one-piece, shatter-proof, UV-rated polycarbonate.

Gasket: Closed-cell silicone foam gasket that seals out moisture, dust, and insects, for weather-tight operation.

Mounting: Surface mounting to wall, column or ceiling. Mounting bracket provided fits to any standard 3" or 4" J-Box.

Installation: Please refer to installation instructions.

Finish: Zinc polyester powder coat finish in black, white, silver, bronze, or any custom RAL color. Consult factory for marine grade or anti-microbial finish.



Dimensions

*Lumen Maintenance Report: Nichia
Test Documentation No.: NFSW757GT-V3

Content of specification sheet subject to change

LUMUX

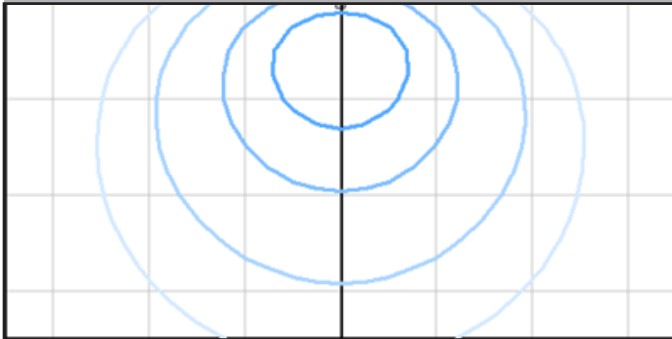
WALL SCONCE

WS550 46W

Photometry	IESNA: LM-63-2002
TEST: L032310503	TEST LAB: Light Laboratory Inc.
LUMINAIRE: WS550	DATE: 2023-09-03
IES Classification: IV	Longitudinal Class: Very Short
Luminaire Lumens	1579 (4000K)
Luminaire Efficacy Rating (LER)	34 lm/W
Total Luminaire Watts	46.29W
Upward Waste Light Ratio	0.35
Max. Candela	525
Max. Cd. < 90° Vertical	525
Max. Cd. (At 90 Deg. Vert.)	496 (31.4% luminaire)
Max. Cd. (80 to <90 Deg. Vert.)	522 (33.1% luminaire)
Cutoff Classification: N.A.	BUG Rating: B0-U3-G2

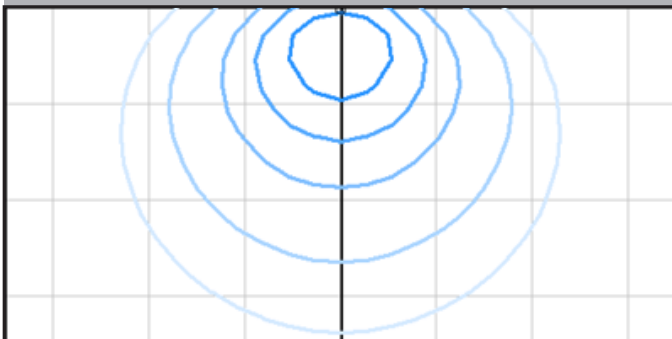
Technical aspects may change without notice.

Iso-illumination: Ground Flood, Wall Mount MH 12' off-ground



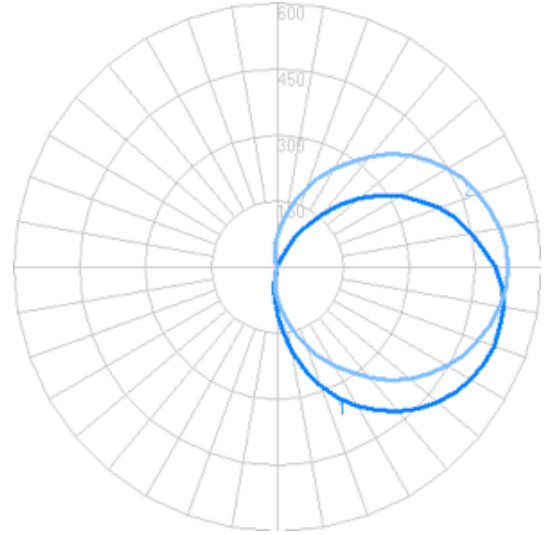
Foot-candles: 0.1, 0.2, 0.5, 1 | Grid spacing 10'

Iso-illumination: Ground Flood, Wall Mount MH 8' off-ground



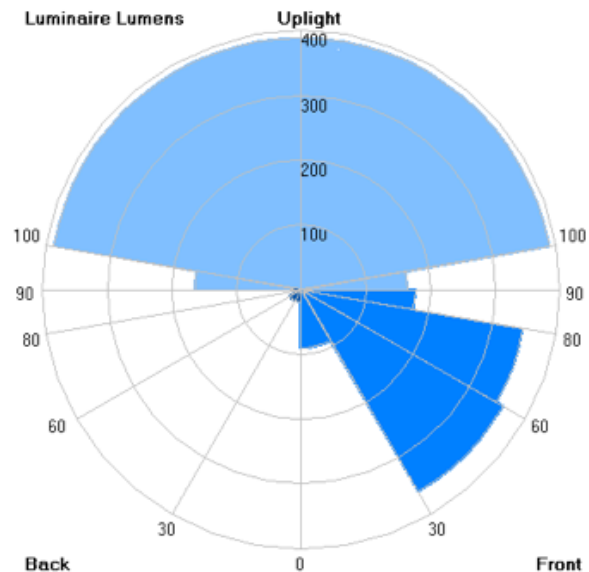
Foot-candles: 0.1, 0.2, 0.5, 1, 2 | Grid spacing 10'

Candela



Zonal Lumens

LCS	Zone	Lumens	%Lum.
FL	(0-30)	90.3	5.7
FM	(30-60)	360.0	22.8
FH	(60-80)	347.9	22.0
FVH	(80-90)	175.6	11.1
BL	(0-30)	18.7	1.2
BM	(30-60)	19.6	1.2
BH	(60-80)	10.5	0.7
BVH	(80-90)	4.0	0.3
UL	(90-100)	164.0	10.4
UH	(100-180)	388.5	24.6
Total		1579	100



Back 0 Front

Content of specification sheet subject to change

LUMUX

WALL SCNCE

WS500 & WS700 SERIES COLLECTION



WS500 & WS500-ADA 14" housing
impact-resistant opal polycarbonate diffuser



WS700 10.7" housing
impact-resistant opal polycarbonate diffuser



WS520 14" housing
protective window grille over opal diffuser



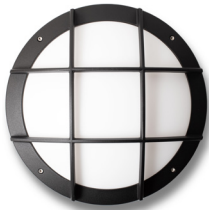
WS740 10.7" housing
protective window grille over opal diffuser



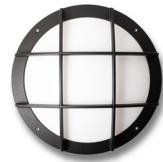
WS533 14" housing
protective slatted grille over opal diffuser



WS733 10.7" housing
protective slatted grille over opal diffuser



WS534 14" housing
protective nautical grille over opal diffuser



WS734 10.7" housing
protective nautical grille over opal diffuser



WS550 14" housing
cutoff hood over opal polycarbonate diffuser



WS750 10.7" housing
cutoff hood over opal polycarbonate diffuser