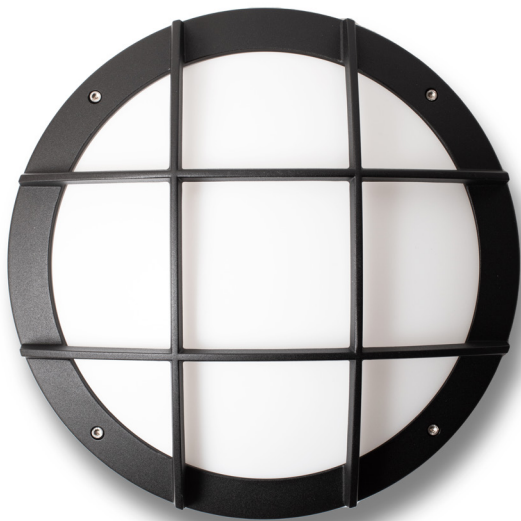


# LUMUX

## WALL SCONCE

WS534

DATE: \_\_\_\_\_  
PROJECT: \_\_\_\_\_  
FIRM: \_\_\_\_\_  
CATALOG NO.: \_\_\_\_\_  
COMMENTS: \_\_\_\_\_



WS534 from Lumux is an elegant, architectural wall sconce that excels at defining spaces, both during the day and at night.

WS534 offers a distinctively contemporary design suited for wall, column or ceiling installation. Ideal for illuminating porches and porticos, as a wall accent, and for lighting walks alongside buildings, WS534 is a powerful outdoor LED solution. WS534 is constructed from heavy-duty diecast aluminum, providing durability that meets the highest standards. WS500 Series luminaires are part of a varied collection of surface mount luminaires that includes the smaller WS700 Series.

up to **5,400** lm      **54**W      up to **100** lm/W

LUMUX LIGHTING

7803 Industry Ave, Pico Rivera, CA 90660  
sales@lumux.com | 562-801-5100

Content of specification sheet subject to change

# LUMUX

## WALL SCNCE WS534

WS534 is a high-efficacy surface mount luminaire with optional integral battery pack, occupancy sensor, and photocell daylight sensor.

### Ordering Guide

Catalog No.	Wattage	LED Color	Color Temp <sup>1</sup>	Voltage	Finish	Options <sup>2</sup>
WS534	25W	White	2700K	120-277v	Black	<input type="checkbox"/> 0-10v Dimming <input type="checkbox"/> Photocell <input type="checkbox"/> Occupancy Sensor <input type="checkbox"/> Integral Battery Pack
	54W		3000K		White	
			3500K		Silver	
			4000K		Bronze	
					Custom RAL <sup>2</sup>	

<sup>1</sup>Consult factory for additional options;  
color temp applies to white light only.

<sup>2</sup>Consult factory for additional pricing.

Catalog No.: \_\_\_\_\_

Performance Specifications WS534 54W	
Flux 5,400 lm (4000K)	LER 100 lm/W (4000K)
Power 54W	120-277v input voltage
Starting temp. rated to -20°F	Photocell option
0-10v dimming driver option	Occupancy Sensor option
Lumen Maintenance*: L70 100K hrs	Integral Battery Pack option

Environmental Specifications	
BUG rating 54W: B0-U5-G4	BUG rating 25W: B1-U2-G1
CRI 80	Color temperature options
IP65	ETL listed for wet-locations
Effective Projected Area: < 1 sq.ft.	Marine Grade option
5-year limited warranty	Made in the USA

### Delivered Lumens & Wattage per color temperature:

	2700K	3000K	3500K	4000K	WATTS
WS534 - 25W	1750 lm	1800 lm	1850 lm	1900 lm	25W
WS534 - 54W	4950 lm	5100 lm	5250 lm	5400 lm	54W

For higher lumen packages, please consult the Lumux sales team.

**Housing:** Heavy-duty construction of corrosion resistant, low-copper diecast aluminum, secured with vandal-resistant, stainless steel screws.

**Lens:** Sealed one-piece, shatter-proof, UV-rated polycarbonate.

**Gasket:** Closed-cell silicone foam gasket that seals out moisture, dust, and insects, for weather-tight operation.

**Mounting:** Surface mounting to wall, column or ceiling. Mounting bracket provided fits to any standard 3" or 4" J-Box.

**Installation:** Please refer to installation instructions.

**Finish:** Zinc polyester powder coat finish in black, white, silver, bronze, or any custom RAL color. Consult factory for marine grade or anti-microbial finish.



### Dimensions

\*Lumen Maintenance Report: Nichia  
Test Documentation No.: NFSW757GT-V3

Content of specification sheet subject to change

# LUMUX

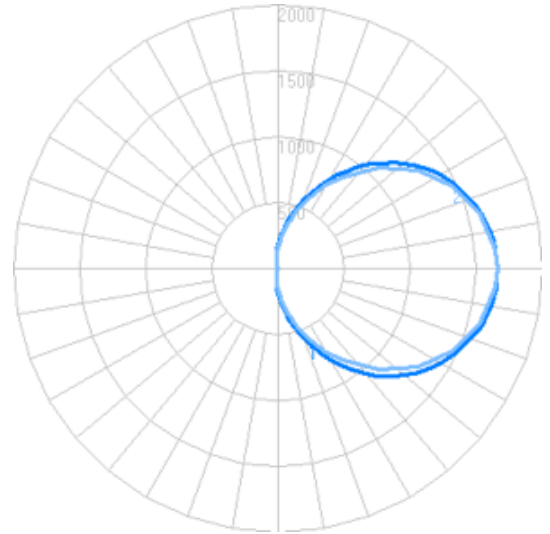
## WALL SCONCE

### WS534

Photometry	IESNA: LM-63-2002
TEST: 14507470.02	TEST LAB: UL LLC
LUMINAIRE: WS500	DATE: 2022-09-30
IES Classification: n/a	Longitudinal Class: n/a
Luminaire Lumens	5431 (4000K)
Luminaire Efficacy Rating (LER)	100 lm/W
Total Luminaire Watts	53.5W
Upward Waste Light Ratio	0.50
Max. Candela	1662.4
Max. Cd. < 90° Vertical	1660.4
Max. Cd. (At 90 Deg. Vert.)	1662.4 (31.2% Luminaire)
Max. Cd. (80 to <90 Deg. Vert.)	1660.4 (31.2% Luminaire)
Cutoff Classification: N.A.	Wall Mount BUG Rating: B0-U5-G4

Technical aspects may change without notice.

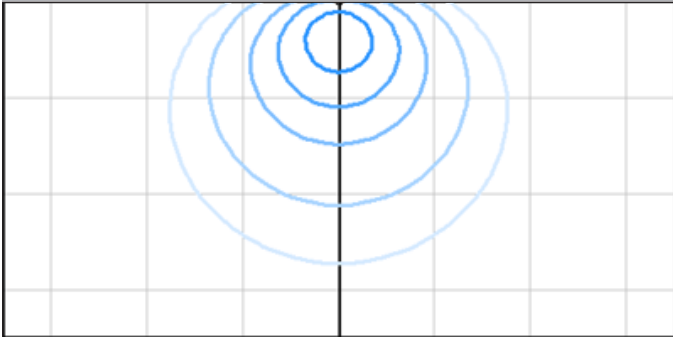
#### Candela



#### Zonal Lumens - Wall Mount

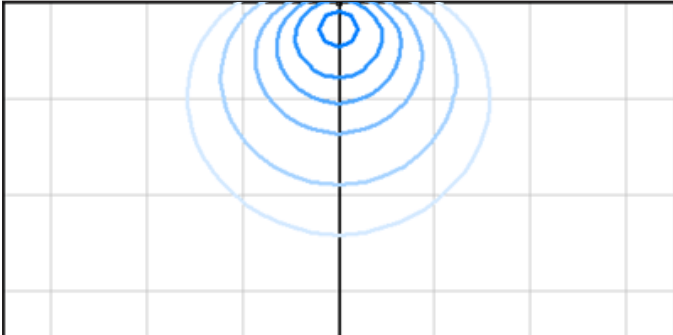
LCS	Zone	Lumens	%Lum.
FL	(0-30)	172.1	3.2
FM	(30-60)	852.1	16.0
FH	(60-80)	979.8	18.4
FVH	(80-90)	552.4	10.4
BL	(0-30)	31.2	0.6
BM	(30-60)	33.4	0.6
BH	(60-80)	21.1	0.4
BVH	(80-90)	10.4	0.2
UL	(90-100)	578.3	10.9
UH	(100-180)	2093.4	39.3
Total		5324.2	100

#### Iso-illuminance: Ground Flood, Wall Mount MH 12' off-ground



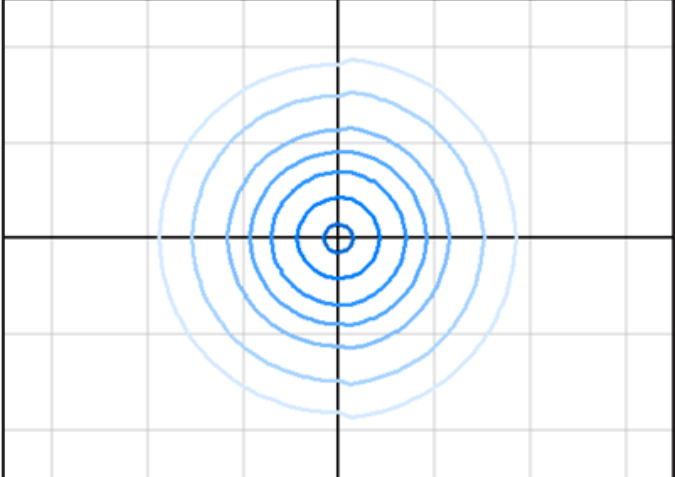
Foot-candles: 0.1, 0.2, 0.5, 1, 2 | Grid spacing 20'

#### Iso-illuminance: Ground Flood, Wall Mount MH 8' off-ground



Foot-candles: 0.1, 0.2, 0.5, 1, 2, 5 | Grid spacing 20'

#### Iso-illuminance: Ground Flood, Ceiling Mount MH 12' off-ground



Foot-candles: 0.1, 0.2, 0.5, 1, 2, 5, 10 | Grid spacing 20'

Content of specification sheet subject to change

# LUMUX

## WALL SCNCE

### WS500 & WS700 SERIES COLLECTION



**WS500 & WS500-ADA 14" housing**  
impact-resistant opal polycarbonate diffuser



**WS700 10.7" housing**  
impact-resistant opal polycarbonate diffuser



**WS520 14" housing**  
protective window grille over opal diffuser



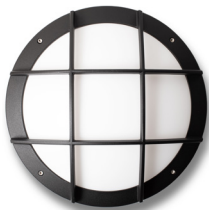
**WS740 10.7" housing**  
protective window grille over opal diffuser



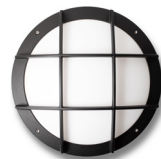
**WS533 14" housing**  
protective slatted grille over opal diffuser



**WS733 10.7" housing**  
protective slatted grille over opal diffuser



**WS534 14" housing**  
protective nautical grille over opal diffuser



**WS734 10.7" housing**  
protective nautical grille over opal diffuser



**WS550 14" housing**  
cutoff hood over opal polycarbonate diffuser



**WS750 10.7" housing**  
cutoff hood over opal polycarbonate diffuser