

LUMUX

WALL SCONCE

WS520

DATE: _____
PROJECT: _____
FIRM: _____
CATALOG NO.: _____
COMMENTS: _____



WS520 from Lumux is an elegant, architectural wall sconce that excels at defining spaces, both during the day and at night.

WS520 offers a distinctively contemporary design suited for wall, column or ceiling installation. Ideal for illuminating porches and porticos, as a wall accent, and for lighting walks alongside buildings, WS520 is a powerful outdoor LED solution. WS520 is constructed from heavy-duty diecast aluminum, providing durability that meets the highest standards. WS500 Series luminaires are part of a varied collection of surface mount luminaires that includes the smaller WS700 Series.

up to **5,400** lm **54**W up to **100** lm/W

LUMUX

WALL SCNCE WS520

WS520 is a high-efficacy surface mount luminaire with optional integral battery pack, occupancy sensor, and photocell daylight sensor.

Ordering Guide

Catalog No.	Wattage	LED Color	Color Temp ¹	Voltage	Finish	Options ²
WS520	25W	White	2700K	120-277v	Black	<input type="checkbox"/> 0-10v Dimming <input type="checkbox"/> Photocell <input type="checkbox"/> Occupancy Sensor <input type="checkbox"/> Integral Battery Pack
	54W		3000K		White	
			3500K		Silver	
			4000K		Bronze	
					Custom RAL ²	

¹Consult factory for additional options;

²Consult factory for additional pricing.

Catalog No.: _____

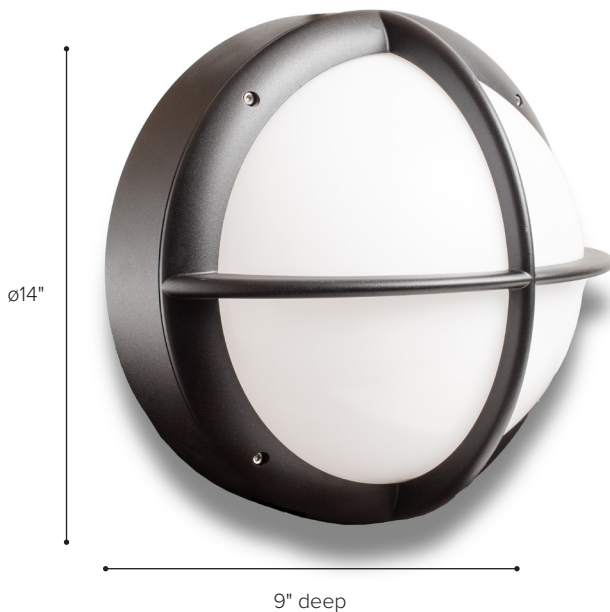
Performance Specifications WS520 54W	
Flux 5,400 lm (4000K)	LER 100 lm/W (4000K)
Power 54W	120-277v input voltage
Starting temp. rated to -20°F	Photocell option
0-10v dimming driver option	Occupancy Sensor option
Lumen Maintenance*: L70 100K hrs	Integral Battery Pack option

Environmental Specifications	
BUG rating 54W: B0-U5-G4	BUG rating 25W: B1-U2-G1
CRI 80	Color temperature options
IP65	ETL listed for wet-locations
Effective Projected Area: < 1 sq.ft.	Marine Grade option
5-year limited warranty	Made in the USA

Delivered Lumens & Wattage per color temperature:

	2700K	3000K	3500K	4000K	WATTS
WS520 - 25W	1750 lm	1800 lm	1850 lm	1900 lm	25W
WS520 - 54W	4950 lm	5100 lm	5250 lm	5400 lm	54W

For higher lumen packages, please consult the Lumux sales team.



Housing: Heavy-duty construction of corrosion resistant, low-copper diecast aluminum, secured with vandal-resistant, stainless steel screws.

Lens: Sealed one-piece, shatter-proof, UV-rated polycarbonate.

Gasket: Closed-cell silicone foam gasket that seals out moisture, dust, and insects, for weather-tight operation.

Mounting: Surface mounting to wall, column or ceiling. Mounting bracket provided fits to any standard 3" or 4" J-Box.

Installation: Please refer to installation instructions.

Finish: Zinc polyester powder coat finish in black, white, silver, bronze, or any custom RAL color. Consult factory for marine grade or anti-microbial finish.

Dimensions

*Lumen Maintenance Report: Nichia
Test Documentation No.: NFSW757GT-V3

Content of specification sheet subject to change

LUMUX

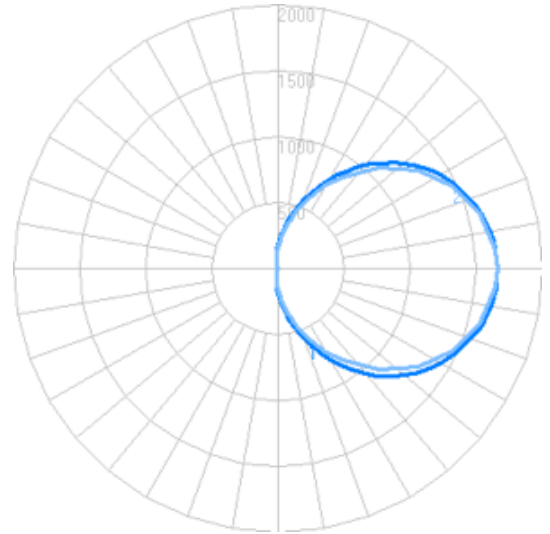
WALL SCONCE

WS520

Photometry	IESNA: LM-63-2002
TEST: 14507470.02	TEST LAB: UL LLC
LUMINAIRE: WS500	DATE: 2022-09-30
IES Classification: n/a	Longitudinal Class: n/a
Luminaire Lumens	5431 (4000K)
Luminaire Efficacy Rating (LER)	100 lm/W
Total Luminaire Watts	53.5W
Upward Waste Light Ratio	0.50
Max. Candela	1662.4
Max. Cd. < 90° Vertical	1660.4
Max. Cd. (At 90 Deg. Vert.)	1662.4 (31.2% Luminaire)
Max. Cd. (80 to <90 Deg. Vert.)	1660.4 (31.2% Luminaire)
Cutoff Classification: N.A.	Wall Mount BUG Rating: B0-U5-G4

Technical aspects may change without notice.

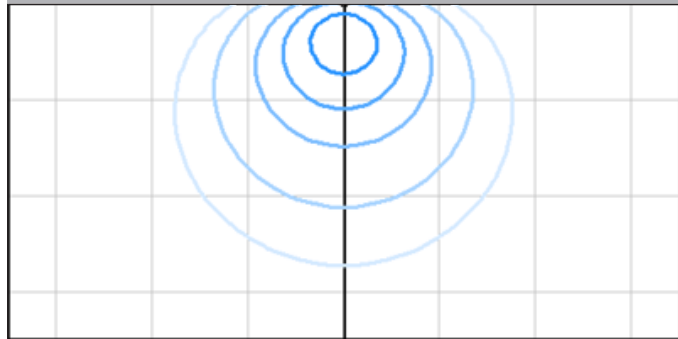
Candela



Zonal Lumens - Wall Mount

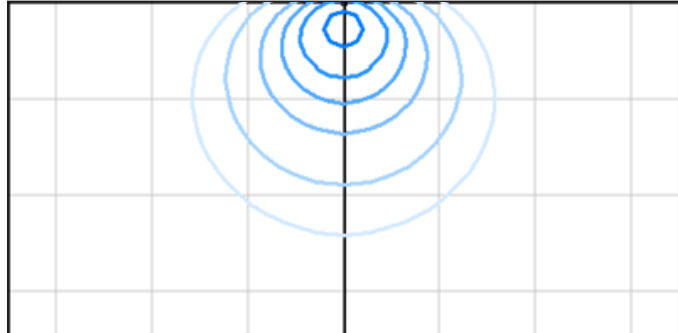
LCS	Zone	Lumens	%Lum.
FL	(0-30)	172.1	3.2
FM	(30-60)	852.1	16.0
FH	(60-80)	979.8	18.4
FVH	(80-90)	552.4	10.4
BL	(0-30)	31.2	0.6
BM	(30-60)	33.4	0.6
BH	(60-80)	21.1	0.4
BVH	(80-90)	10.4	0.2
UL	(90-100)	578.3	10.9
UH	(100-180)	2093.4	39.3
Total		5324.2	100

Iso-illuminance: Ground Flood, Wall Mount MH 12' off-ground



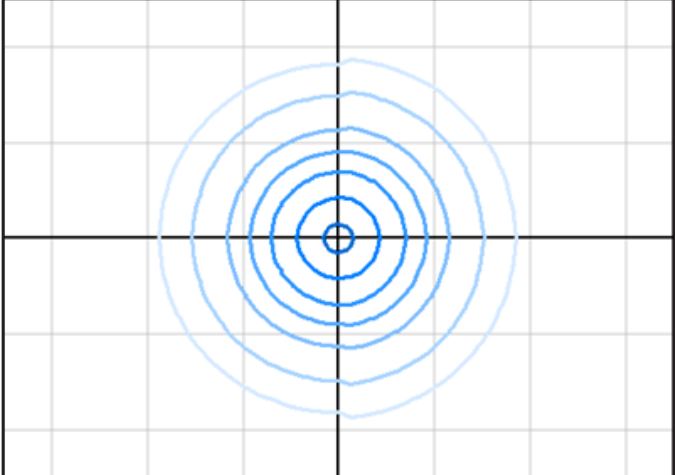
Foot-candles: 0.1, 0.2, 0.5, 1, 2 | Grid spacing 20'

Iso-illuminance: Ground Flood, Wall Mount MH 8' off-ground



Foot-candles: 0.1, 0.2, 0.5, 1, 2, 5 | Grid spacing 20'

Iso-illuminance: Ground Flood, Ceiling Mount MH 12' off-ground



Foot-candles: 0.1, 0.2, 0.5, 1, 2, 5, 10 | Grid spacing 20'

Content of specification sheet subject to change

LUMUX

WALL SCNCE

WS500 & WS700 SERIES COLLECTION



WS500 & WS500-ADA 14" housing
impact-resistant opal polycarbonate diffuser



WS700 10.7" housing
impact-resistant opal polycarbonate diffuser



WS520 14" housing
protective window grille over opal diffuser



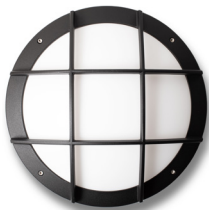
WS740 10.7" housing
protective window grille over opal diffuser



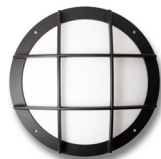
WS533 14" housing
protective slatted grille over opal diffuser



WS733 10.7" housing
protective slatted grille over opal diffuser



WS534 14" housing
protective nautical grille over opal diffuser



WS734 10.7" housing
protective nautical grille over opal diffuser



WS550 14" housing
cutoff hood over opal polycarbonate diffuser



WS750 10.7" housing
cutoff hood over opal polycarbonate diffuser