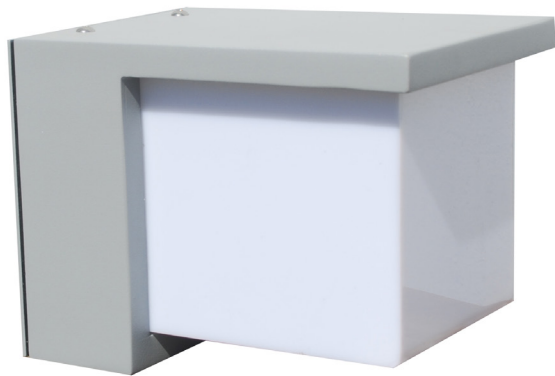


LUMUX

WALL SCNCE

WS100

DATE: _____
PROJECT: _____
FIRM: _____
CATALOG NO.: _____
COMMENTS: _____



WS100 from Lumux is an elegant, architectural wall sconce that excels at defining spaces, both during the day and at night.

WS100 offers a distinctively contemporary design suited for wall or column installation. Ideal for illuminating porches and porticos, as a wall accent, and for lighting walks alongside buildings, WS100 is a powerful outdoor LED solution. WS100 is constructed from heavy-duty diecast aluminum, providing durability that meets the highest standards.

450 lm **18**w minimum **26** lm/W

Content of specification sheet subject to change

LUMUX

WALL SCONCE WS100

WS100 for surface or wall mount, with optional 0-10v dimming & color temp options.

Ordering Guide

| Catalog No. | LED Color | Color Temp ¹ | Voltage | Finish | Options ² |
|-------------|-----------|-------------------------|----------|-------------------------|--|
| WS100 | White | 2700K | 120-277v | Black | <input type="checkbox"/> 0-10v Dimming |
| | Amber-TF | 3000K | | White | |
| | | 3500K | | Silver | |
| | | 4000K | | Bronze | |
| | | | | Custom RAL ² | |

¹Consult factory for additional options;

²Consult factory for additional pricing.

Catalog No.: _____

| Performance Specifications | |
|-------------------------------|------------------------|
| Flux 450 lm (4000K) | LER 26 lm/W (4000K) |
| Power 18W | 120-277v input voltage |
| Starting temp. rated to -20°F | |
| 0-10v dimming driver option | |

| Environmental Specifications | |
|--|-----------------------------------|
| BUG Rating B0-U3-G1 | Amber-TF (turtle friendly) option |
| CRI 80 | Color temperature options |
| IP65 | ETL listed for wet-locations |
| Effective Projected Area: ≤ 0.5 sq.ft. | Marine Grade option |
| 5-year limited warranty | Made in the USA |

Delivered Lumens & Wattage per color temperature:

| | 2700K | 3000K | 3500K | 4000K | WATTS |
|-------|--------|--------|--------|--------|-------|
| WS100 | 375 lm | 400 lm | 425 lm | 450 lm | 18W |

Housing: Heavy-duty construction of corrosion resistant, low-copper diecast aluminum, retaining the diffuser securely with with vandal-resistant, stainless steel screws.

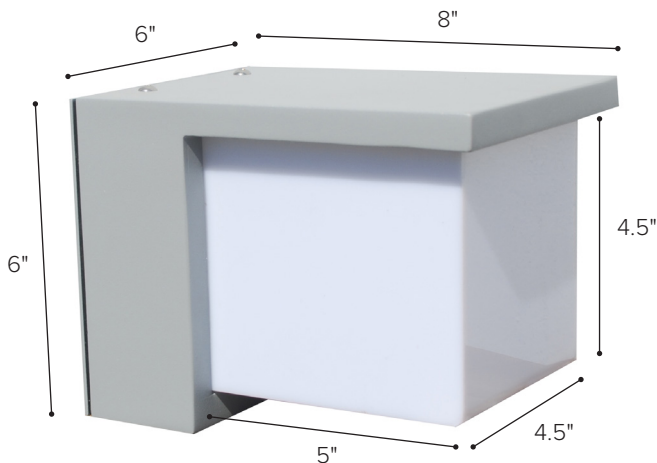
Lens: One piece injection molded white opal diffuser made from shatter-proof, UV-rated polycarbonate.

Gasket: Closed-cell silicone foam gasket that seals out moisture, dust, and insects, for weather-tight operation.

Mounting: Surface or wall mounted.

Installation: Please refer to installation instructions.

Finish: Zinc polyester powder coat finish in black, white, silver, bronze, or any custom RAL color. Consult factory for marine grade or anti-microbial finish.



Dimensions

*Lumen Maintenance Report: Nichia
Test Documentation No.: NFSW757GT-V3

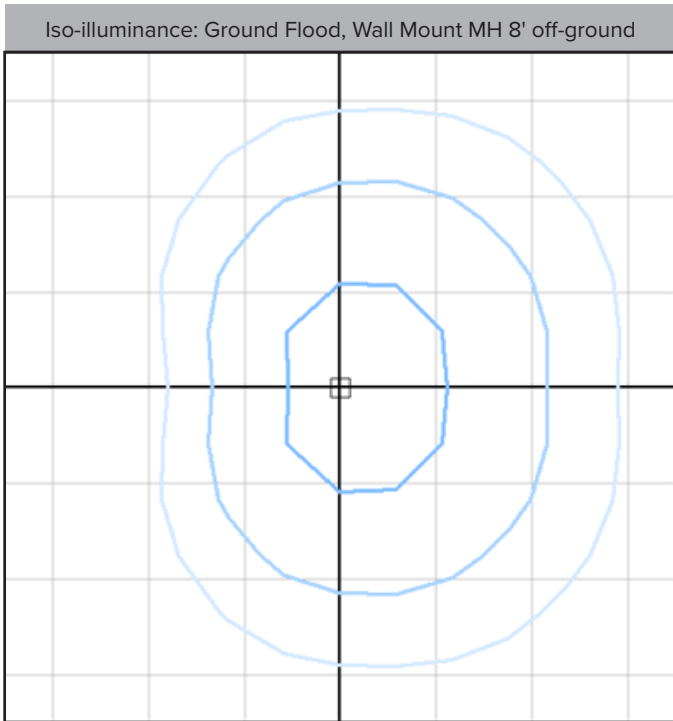
Content of specification sheet subject to change

LUMUX

WALL SCNCE WS100

| Photometry | IESNA: LM-63-2002 |
|---------------------------------|-------------------------------|
| TEST: 11062757.001 | TEST LAB: ULVerification Svs. |
| LUMINAIRE: WS100 | DATE: 2015-03-12 |
| IES Classification: Type IV | Longitudinal Class: Short |
| Luminaire Lumens | 457 (4000K) |
| Luminaire Efficacy Rating (LER) | 26 lm/W |
| Total Luminaire Watts | 17.52W |
| Upward Waste Light Ratio | 0.35 |
| Max. Candela | 69.3 |
| Max. Cd. < 90° Vertical | 69.3 |
| Max. Cd. (At 90 Deg. Vert.) | 57.7 (12.6% Luminaire) |
| Max. Cd. (80 to <90 Deg. Vert.) | 62 (13.6% Luminaire) |
| Cutoff Classification: N.A. | B0-U3-G1 |

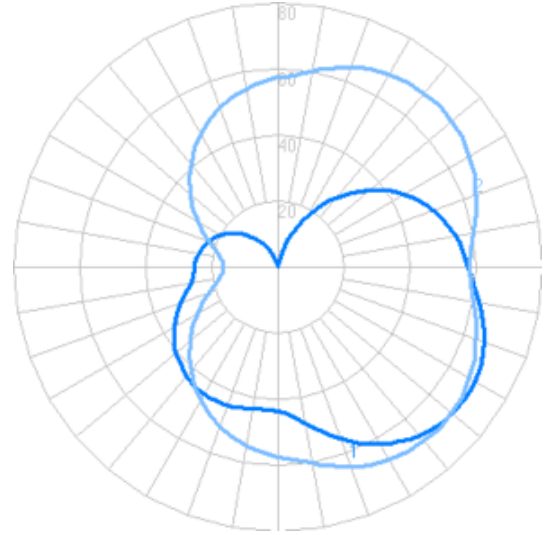
Technical aspects may change without notice.



Foot-candles: 0.1, 0.2, 0.5 | Grid spacing 5'

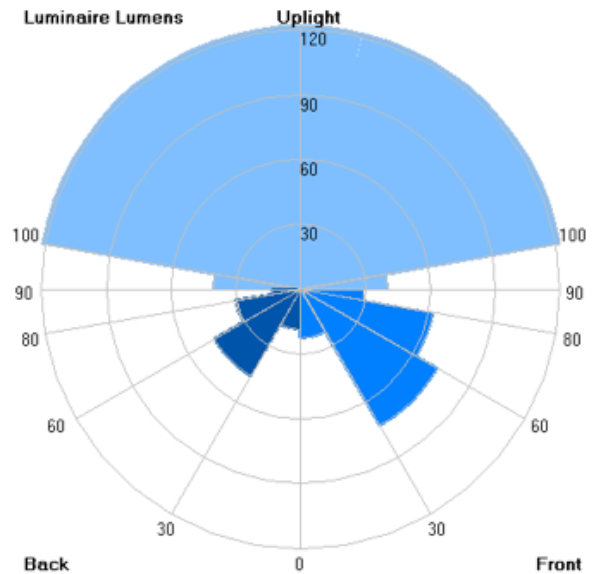
Sample isoillumincance plot. For actual values, use Lumux IES file with photometry software and correct surface reflectances.

Candela



Zonal Lumens

| LCS | Zone | Lumens | %Lum. |
|-------|-----------|--------|-------|
| FL | (0-30) | 22.7 | 5.0 |
| FM | (30-60) | 72.9 | 16.0 |
| FH | (60-80) | 62.0 | 13.6 |
| FVH | (80-90) | 29.3 | 6.4 |
| BL | (0-30) | 18.6 | 4.1 |
| BM | (30-60) | 46.1 | 10.1 |
| BH | (60-80) | 30.5 | 6.7 |
| BVH | (80-90) | 13.1 | 2.9 |
| UL | (90-100) | 40.2 | 8.8 |
| UH | (100-180) | 121.6 | 16.6 |
| Total | | 457 | 100 |



Content of specification sheet subject to change