

LUMUX

UP / DOWN LIGHT

UD900

DATE: _____
PROJECT: _____
FIRM: _____
CATALOG NO.: _____
COMMENTS: _____



UD Series luminaires from Lumux are elegant architectural up and down lights, precision engineered for durability and performance.

UD900 offers a distinctively contemporary, minimalist design. Ideal for illuminating walkways and porches, and as accent lighting, UD900 is a powerful outdoor LED solution available in three different lengths and lumen packages. UD900 features an extruded aluminum housing with shatter-proof plate glass diffusers, and optional photocell and occupancy sensor. UD Series luminaires are energy-efficient for long-lasting indoor and outdoor applications.

up to **3,900** lm **45** w up to **87** lm/W

Content of specification sheet subject to change

LUMUX

UP / DOWN LIGHT UD900

UD900 is a high-efficacy luminaire with integrated 0-10v dimming, uplight and downlight options, and length and power options.

Ordering Guide

Catalog No.	Wattage	LED Color	Color Temp ¹	Voltage	Finish	Options ²
UD900-12	28W	White	2700K	120-277v	Black	<input type="checkbox"/> Uplight & Downlight <input type="checkbox"/> Uplight only <input type="checkbox"/> Downlight only <input type="checkbox"/> Photocell <input type="checkbox"/> Occupancy Sensor
UD900-15	35W		3000K		White	
UD900-20	45W		3500K		Silver	
			4000K		Bronze	
					Custom RAL ²	

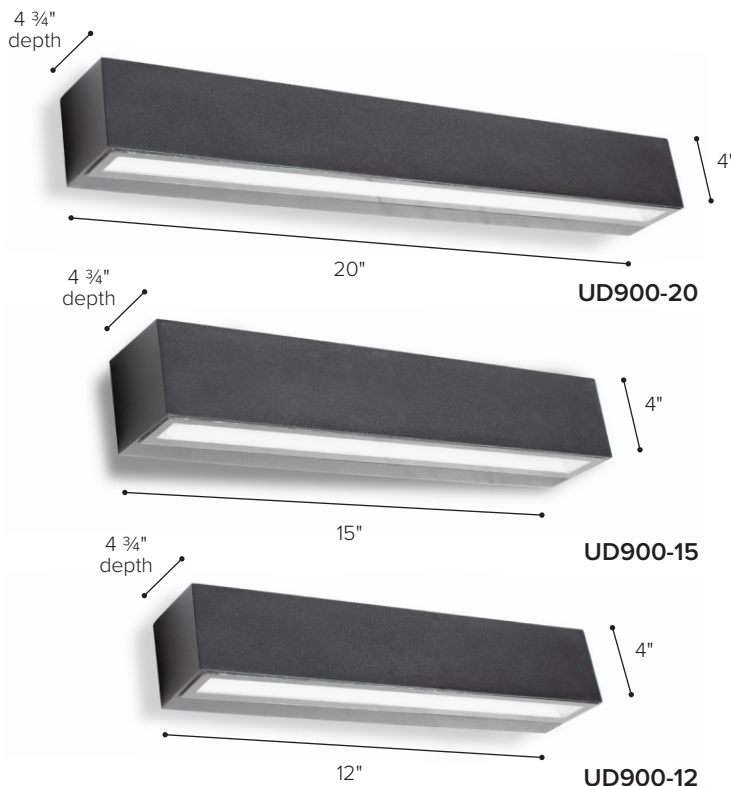
¹Consult factory for additional options

²Consult factory for additional pricing

Catalog No.: _____

Performance Specifications	
Flux 3,900 lm (4000K)	LER 87 lm/W (4000K)
Power 45W	120-277v input voltage
Starting temp. rated to -20°F	
Integrated 0-10v Dimming	
Lumen Maintenance*: L70 > 60K hrs	

Environmental Specifications	
17W Downlight BUG Rating B1-U0-G0	23W Downlight BUG Rating B1-U0-G1
CRI 80	Color temperature options
IP65	ETL listed for wet-locations
Effective Projected Area: ≤ 1 sq.ft.	Marine Grade option
5-year limited warranty	Made in the USA



Delivered Lumens & Wattage per color temperature:

	2700K	3000K	3500K	4000K	WATTS
UD900-12	2200 lm	2200 lm	2200 lm	2200 lm	28W
UD900-15	2800 lm	2800 lm	2800 lm	2800 lm	35W
UD900-20	3900 lm	3900 lm	3900 lm	3900 lm	45W

For higher lumen packages, please consult the Lumux sales team.

Housing: Heavy-duty construction of corrosion resistant, low-copper diecast aluminum, secured with vandal-resistant, stainless steel screws.

Lens: Sealed one-piece shatter-proof clear glass optic.

Gasket: Closed-cell silicone foam gasket seals out moisture, dust, and insects, for weather-tight operation. IP65 - ETL listed for wet-locations.

Mounting: Surface mounted to wall or column. Mounting bracket provided fits any standard 3" or 4" junction box.

Finish: Zinc polyester powder coat finish in black, white, silver, bronze, or any custom RAL color. Consult factory for marine grade or anti-microbial finish.

Light Engine: Constant Current driver with integrated 0-10v dimming, powering high quality LEDs.

*Lumen Maintenance Report: Nichia
Test Documentation No.: NFSW757GT-V3

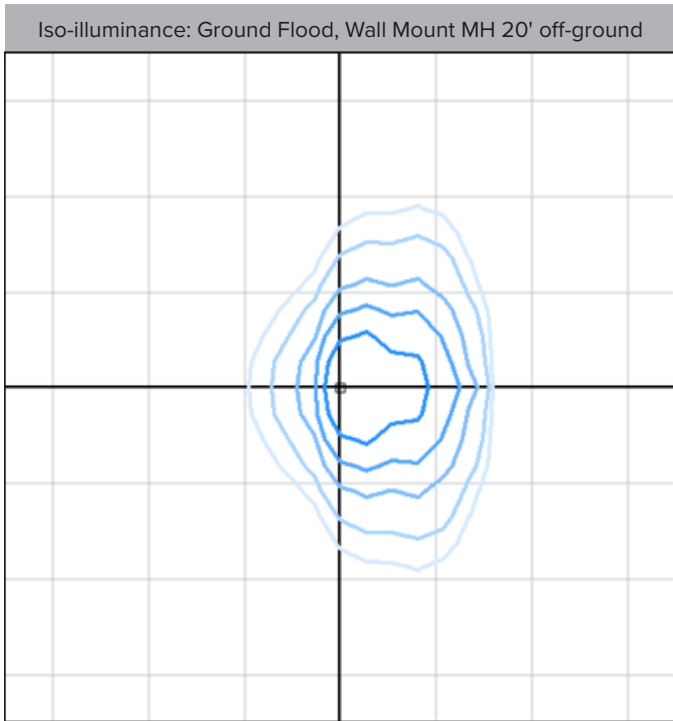
Content of specification sheet subject to change

LUMUX

UP / DOWN LIGHT UD900

Photometry	IESNA: LM-63-2002
TEST: 14626184.05	TEST LAB: UL Verification Svs
LUMINAIRE: UD900	DATE: 2023-01-09
IES Classification: N.A.	Longitudinal Class: N.A.
Luminaire Lumens	1004 (4000K)
Luminaire Efficacy Rating (LER)	32 lm/W
Total Luminaire Watts	31.83W
Upward Waste Light Ratio	0.63
Max. Candela	519.2
Max. Cd. < 90° Vertical	240.2
Max. Cd. (At 90 Deg. Vert.)	1.1 (0.1% Luminaire)
Max. Cd. (80 to <90 Deg. Vert.)	10.8 (1.1% Luminaire)
Cutoff Classification: N.A.	B0-U4-G0

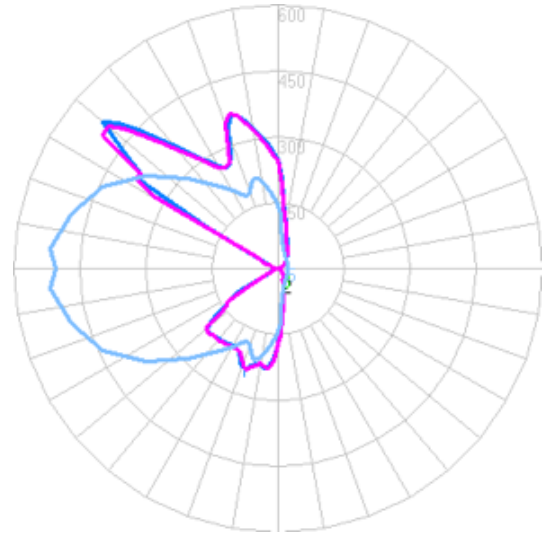
Technical aspects may change without notice.



Foot-candles: 0.1, 0.2, 0.5, 1, 2 | Grid spacing 5'

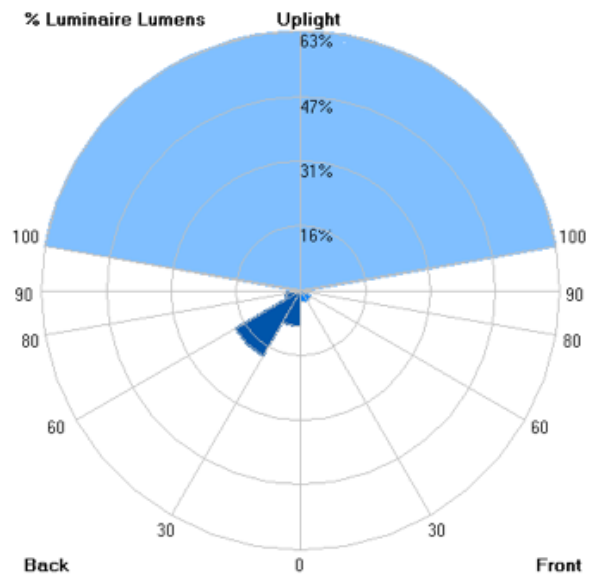
Sample isoilluminance plot. For actual values, use Lumux IES file with photometry software and correct surface reflectances.

Candela



Zonal Lumens

LCS	Zone	Lumens	%Lum.
FL	(0-30)	26.9	2.7
FM	(30-60)	28.3	2.8
FH	(60-80)	7.3	0.7
FVH	(80-90)	0.8	0.1
BL	(0-30)	87.2	8.7
BM	(30-60)	182.5	18.2
BH	(60-80)	36.5	3.6
BVH	(80-90)	1.0	0.1
UL	(90-100)	1.9	0.1
UH	(100-180)	631.8	62.9
Total		1004	100



Content of specification sheet subject to change

LUMUX

LUMINAIRES IN THE COLLECTION

UP & DOWN LIGHTS - RECTANGULAR



DL800
5" housing



UD800
5" housing



UD440
10 1/4" housing



UD900-12
12" housing



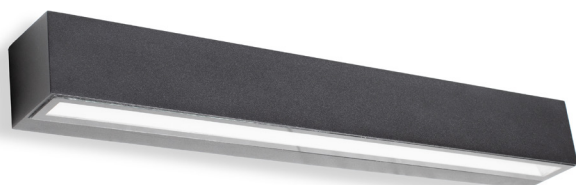
DL300
6 1/2" wall pack



UD900-15
15" housing



DL300-IBP
11 3/4" wall pack w/ IBP option



UD900-20
20" housing



UD500
16" wall pack w/ IBP option