

LUMUX

UP / DOWN LIGHT

UD430

DATE: _____
PROJECT: _____
FIRM: _____
CATALOG NO.: _____
COMMENTS: _____



UD Series luminaires from Lumux are elegant architectural up and down lights, precision engineered for durability and performance.

UD430 offers a distinctively contemporary, minimalist design. Ideal for illuminating walkways, porches and porticos, and as accent lighting, UD430 is a powerful outdoor LED solution. UD430 features a diecast aluminum housing with a shielded light source to enhance visual comfort, with RGBW and 30° and 60° beam angle options. An optional external emergency battery pack delivers 1,000 lm over 90 min. UD Series luminaires are energy-efficient for long-lasting indoor and outdoor applications.

2,300 lm **25** w up to **94** lm/W

Content of specification sheet subject to change

LUMUX

UP / DOWN LIGHT UD430

UD430 is a high-efficacy luminaire with independent up and down specification, beam angle, RGBW, and emergency battery pack options.

Ordering Guide

Catalog No.	Beam Angle	Wattage	LED Color	Color Temp ¹	Voltage	Finish	Options ²
UD430	30° 60°	25W	White RGBW	2700K 3000K 3500K 4000K	120-277v	Black White Silver Bronze Custom RAL ²	<input type="checkbox"/> Uplight & Downlight <input type="checkbox"/> Uplight only <input type="checkbox"/> Downlight only <input type="checkbox"/> Photocell <input type="checkbox"/> External Battery Pack

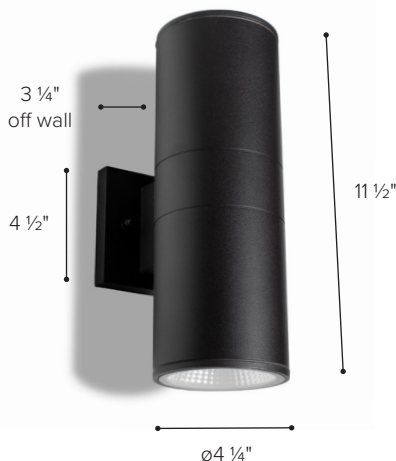
¹Consult factory for additional options

²Consult factory for additional pricing

Catalog No.: _____

Performance Specifications	
Flux 2,300 lm (4000K)	LER 94 lm/W (4000K)
Power 25W	120-277v input voltage
Starting temp. rated to -20°F	Photocell option
Integrated 0-10v Dimming	External Battery Pack option
Lumen Maintenance*: L70 > 60K hrs	

Environmental Specifications	
Downlight BUG Rating: B1-U0-G0	RGBW option
CRI 80	Color temperature options
IP65	ETL listed for wet-locations
Effective Projected Area: < 0.5 sq. ft.	Marine Grade option
5-year limited warranty	Made in the USA



Delivered Lumens & Wattage per color temperature:

	2700K	3000K	3500K	4000K	WATTS
UD430 (30° beam)	2000 lm	2100 lm	2200 lm	2300 lm	25W
UD430 (60° beam)	1900 lm	2000 lm	2100 lm	2200 lm	25W
IBP	1000 lm	1000 lm	1000 lm	1000 lm	10W

For higher lumen packages, please consult the Lumux sales team.

Housing: Heavy-duty construction of corrosion resistant, low-copper diecast aluminum, enclosing a glass optic and anodized aluminum reflector with a step baffle frame, secured with vandal resistant, stainless steel screws.

Lens: Sealed one-piece shatter-proof clear glass optic.

Gasket: Closed-cell silicone foam gasket seals out moisture, dust, and insects, for weather-tight operation. IP65 - ETL listed for wet-locations.

Mounting: Surface mounted to wall or column. Mounting bracket provided fits any standard 3" or 4" junction box.

Finish: Zinc polyester powder coat finish in black, white, silver, bronze, or any custom RAL color. Consult factory for marine grade or anti-microbial finish.

Light Engine: Constant Current driver with integrated 0-10v dimming, powering high quality LEDs.

External Emergency Battery Pack: Optional external emergency 10W EBK provides 1,000 lumens with 90 minute battery life.

*Lumen Maintenance Report: Nichia
Test Documentation No.: NFSW757GT-V3

Content of specification sheet subject to change

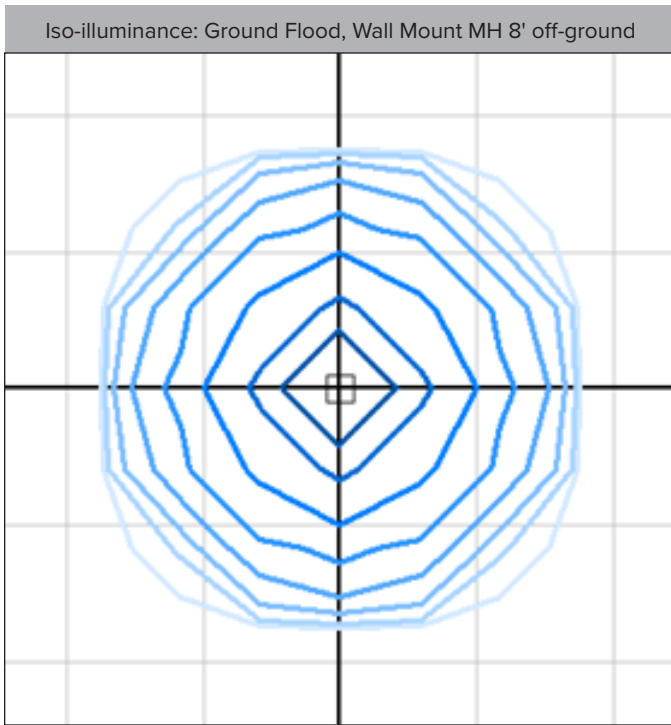
LUMUX

UP / DOWN LIGHT

UD430 - 30° BEAM

Photometry	IESNA: LM-63-2002
TEST: 14626184.03	TEST LAB: UL LLC
LUMINAIRE: UD440	DATE: 2023-01-06
IES Classification: n/a	Longitudinal Class: n/a
Luminaire Lumens	2302 (4000K)
Luminaire Efficacy Rating (LER)	94 lm/W
Total Luminaire Watts	24.64W
Upward Waste Light Ratio	0.49
Max. Candela	2751.2
Max. Cd. < 90° Vertical	2751.2
Max. Cd. (At 90 Deg. Vert.)	2.4 (0.1% Luminaire)
Max. Cd. (80 to <90 Deg. Vert.)	3.3 (3.3% Luminaire)
Cutoff Classification: N.A.	BUG Rating: B1-U5-G0

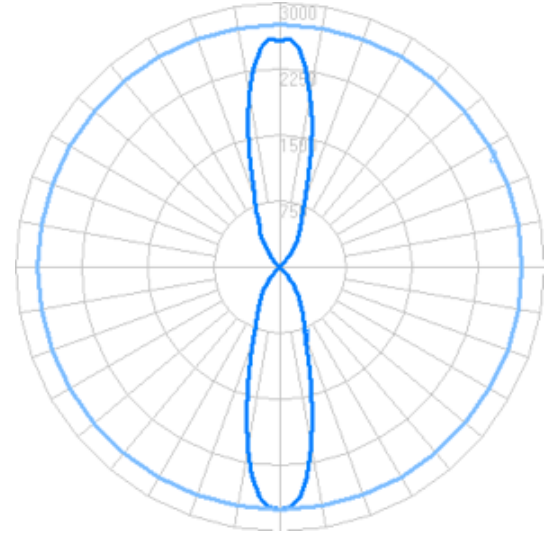
Technical aspects may change without notice.



Foot-candles: 0.1, 0.2, 0.5, 1, 2, 5, 10, 20 | Grid spacing 5'

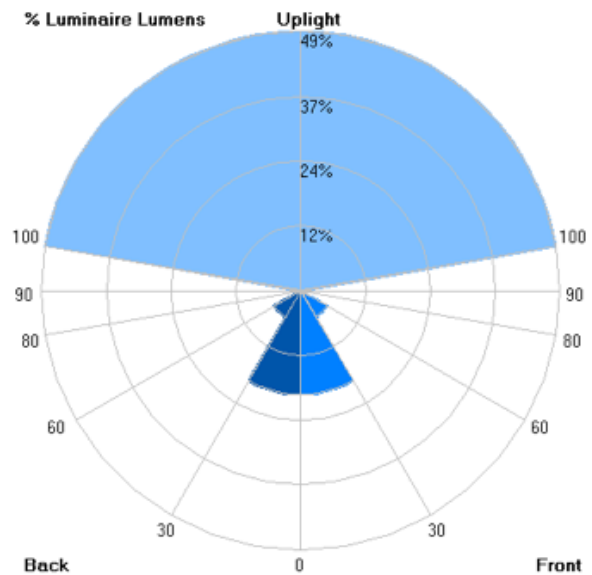
Sample isoilluminance plots. For actual values, use Lumux IES file with photometry software and correct surface reflectances.

Candela



Zonal Lumens - Wall Mount

LCS	Zone	Lumens	%Lum.
FL	(0-30)	452.0	19.6
FM	(30-60)	131.1	5.7
FH	(60-80)	4.3	0.2
FVH	(80-90)	1.5	0.1
BL	(0-30)	452.0	19.6
BM	(30-60)	131.1	5.7
BH	(60-80)	4.3	0.2
BVH	(80-90)	1.5	0.1
UL	(90-100)	3.2	0.1
UH	(100-180)	1128.3	48.9
Total		2309	100



Content of specification sheet subject to change

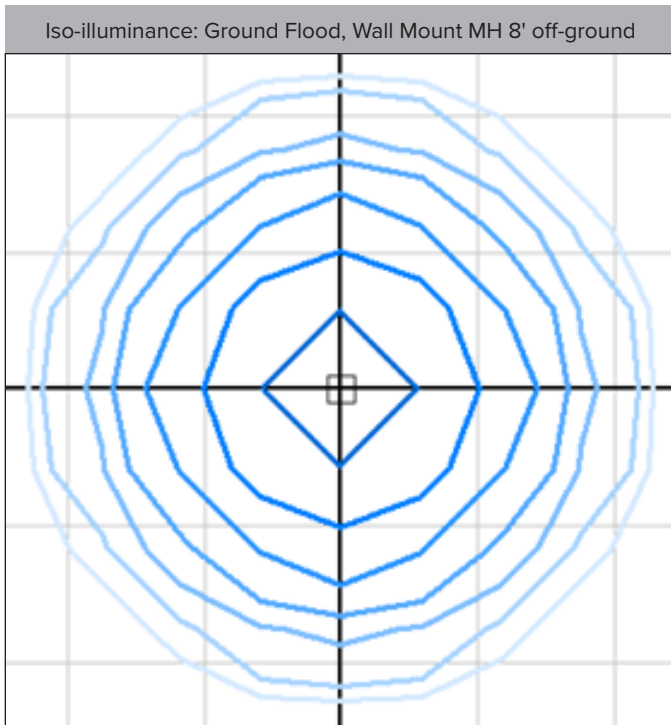
LUMUX

UP / DOWN LIGHT

UD430 - 60° BEAM

Photometry	IESNA: LM-63-2002
TEST: 14626184.02	TEST LAB: UL LLC
LUMINAIRE: UD430	DATE: 2023-01-06
IES Classification: n/a	Longitudinal Class: n/a
Luminaire Lumens	2208 (4000K)
Luminaire Efficacy Rating (LER)	94 lm/W
Total Luminaire Watts	23.5W
Upward Waste Light Ratio	0.52
Max. Candela	1262
Max. Cd. < 90° Vertical	1110.8
Max. Cd. (At 90 Deg. Vert.)	2.5 (0.1% Luminaire)
Max. Cd. (80 to <90 Deg. Vert.)	4.4 (0.2% Luminaire)
Cutoff Classification: N.A.	BUG Rating: B1-U5-G0

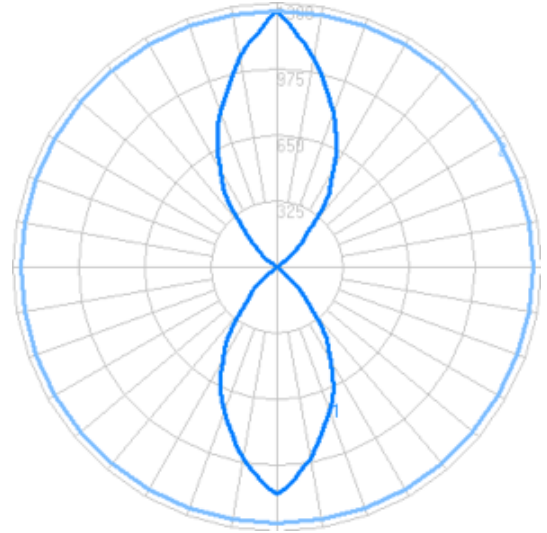
Technical aspects may change without notice.



Foot-candles: 0.1, 0.2, 0.5, 1, 2, 5, 10 | Grid spacing 5'

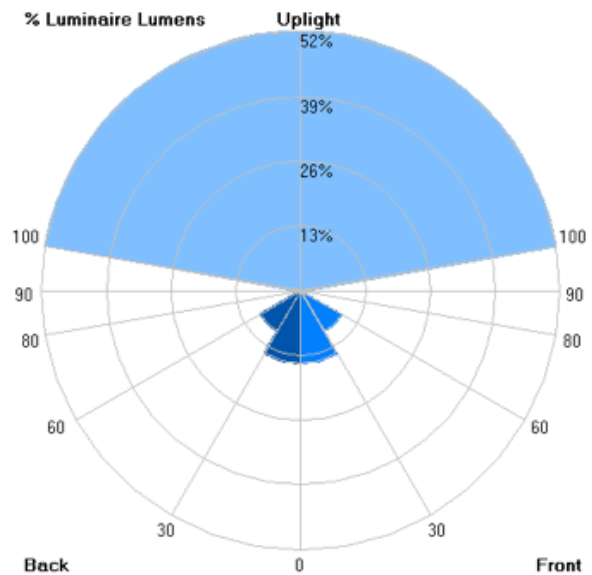
Sample isoilluminance plots. For actual values, use Lumux IES file with photometry software and correct surface reflectances.

Candela



Zonal Lumens - Wall Mount

LCS	Zone	Lumens	%Lum.
FL	(0-30)	317.4	14.2
FM	(30-60)	205.2	9.3
FH	(60-80)	8.3	0.4
FVH	(80-90)	1.7	0.1
BL	(0-30)	317.4	14.4
BM	(30-60)	205.2	9.3
BH	(60-80)	8.3	0.4
BVH	(80-90)	1.7	0.1
UL	(90-100)	3.5	0.2
UH	(100-180)	1139.5	51.6
Total		2208	100



Content of specification sheet subject to change

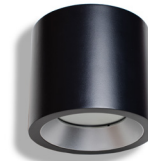
LUMUX

LUMINAIRES IN THE COLLECTION

UP & DOWN LIGHTS - CYLINDRICAL



DL100



DL500



UD110



UD410



UD420



UD430



UD440