

LUMUX

UP / DOWN LIGHT

UD420

DATE: _____
PROJECT: _____
FIRM: _____
CATALOG NO.: _____
COMMENTS: _____



UD Series luminaires from Lumux are elegant architectural up and down lights, precision engineered for durability and performance.

UD420 offers a distinctively contemporary, minimalist design. Ideal for illuminating walkways, porches and porticos, and as accent lighting, UD420 is a powerful outdoor LED solution. UD420 features a diecast aluminum housing with a shielded light source to enhance visual comfort, with field-selectable CCT and Wattage, and 30°, 40°, and 60° beam angle options. An optional external emergency battery pack delivers 1,000 lm over 90 min. UD Series luminaires are energy-efficient for long-lasting indoor and outdoor applications.

1,150 lm **12** w up to **100** lm/W

LUMUX

UP / DOWN LIGHT UD420

UD420 is a high-efficacy luminaire with independent up and down specification, beam angle options, and field-selectable CCT and Wattage.

Ordering Guide

Catalog No.	Beam Angle	Wattage	LED Color	Color Temp ¹	Voltage	Finish	Options ²
UD420	30°	6W	White	2700K	120-277v	Black	<input type="checkbox"/> Uplight & Downlight <input type="checkbox"/> Uplight only <input type="checkbox"/> Downlight only <input type="checkbox"/> Photocell <input type="checkbox"/> External Battery Pack
	40°	9W		3000K		White	
	60°	12W		3500K		Silver	
			4000K	Bronze			
					Custom RAL ²		

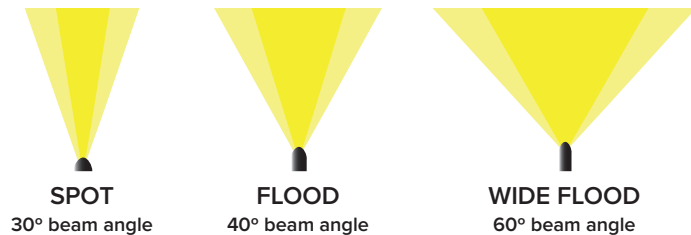
¹Consult factory for additional options

²Consult factory for additional pricing

Catalog No.: _____

Performance Specifications	
Flux 1,150 lm (4000K)	LER 100 lm/W (4000K)
Power 12W	120-277v input voltage
Starting temp. rated to -20°F	Photocell option
Integrated 0-10v Dimming	External Battery Pack option
Lumen Maintenance*: L70 > 60K hrs	

Environmental Specifications	
Downlight BUG Rating: B1-U0-G0	Field-selectable CCT
CRI 80	Color temperature options
IP65	ETL listed for wet-locations
Effective Projected Area: < 0.4 sq.ft.	Marine Grade option
5-year limited warranty	Made in the USA



Delivered Lumens & Wattage per color temperature:

	3000K	4000K	5000K	WATTS
UD420 6W (30°/40° beam)	550 lm	600 lm	600 lm	6W
UD420 9W (30°/40° beam)	850 lm	900 lm	900 lm	9W
UD420 12W (30°/40° beam)	1050 lm	1150 lm	1150 lm	12W
IBP	1000 lm	1000 lm	1000 lm	10W

Housing: Heavy-duty construction of corrosion resistant, low copper diecast aluminum, enclosing a glass optic and anodized aluminum reflector with a step baffle frame, secured with vandal resistant, stainless steel screws.

Lens: Sealed one-piece shatter-proof clear glass optic.

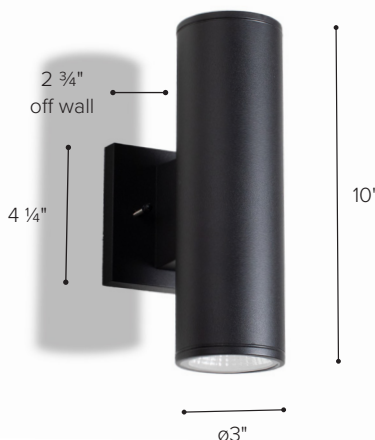
Gasket: Closed-cell silicone foam gasket seals out moisture, dust, and insects, for weather-tight operation. IP65 - ETL listed for wet-locations.

Mounting: Surface mounted to wall or column. Mounting bracket provided fits any standard 3" or 4" junction box.

Finish: Zinc polyester powder coat finish in black, white, silver, bronze, or any custom RAL color. Consult factory for marine grade or anti-microbial finish.

Light Engine: Constant Current driver with integrated 0-10v dimming, powering high quality LEDs with field-selectable color temperature and wattage: 6W, 9W, and 12W.

External Emergency Battery Pack: Optional external emergency 10W EBK provides 1,000 lumens with 90 minute battery life.



*Lumen Maintenance Report: Nichia
Test Documentation No.: NFSW757GT-V3

Content of specification sheet subject to change

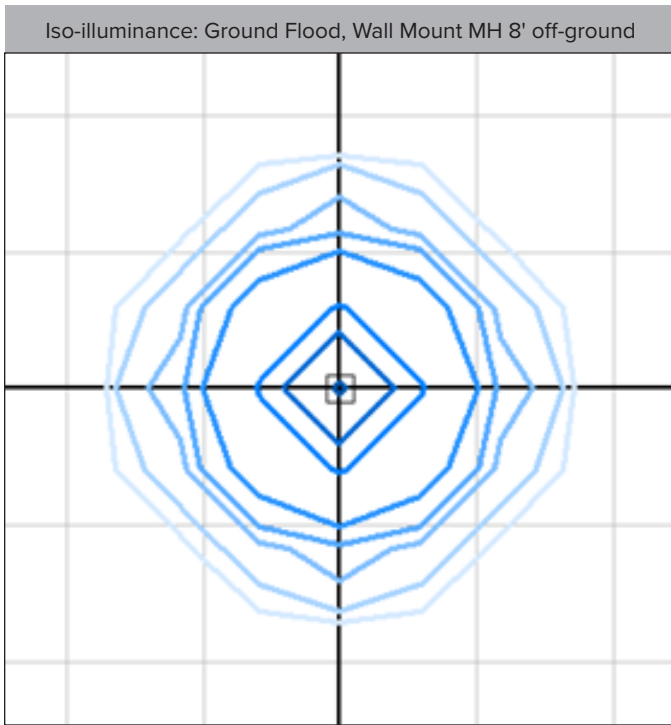
LUMUX

UP / DOWN LIGHT

UD420 - 30° BEAM

Photometry	IESNA: LM-63-2002
TEST: 14626184.01	TEST LAB: UL Verification Svs
LUMINAIRE: UD420	DATE: 2023-01-06
IES Classification: n/a	Longitudinal Class: n/a
Luminaire Lumens	1156 (4000K)
Luminaire Efficacy Rating (LER)	100 lm/W
Total Luminaire Watts	11.53W
Upward Waste Light Ratio	0.52
Max. Candela	1643.2
Max. Cd. < 90° Vertical	1521.8
Max. Cd. (At 90 Deg. Vert.)	1.4 (0.1% Luminaire)
Max. Cd. (80 to <90 Deg. Vert.)	2 (0.2% Luminaire)
Cutoff Classification: N.A.	BUG Rating: B1-U4-G0

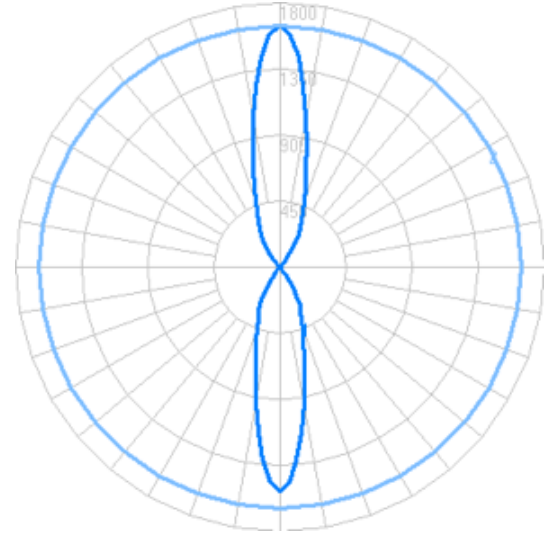
Technical aspects may change without notice.



Foot-candles: 0.1, 0.2, 0.5, 1, 2, 5, 10 | Grid spacing 5'

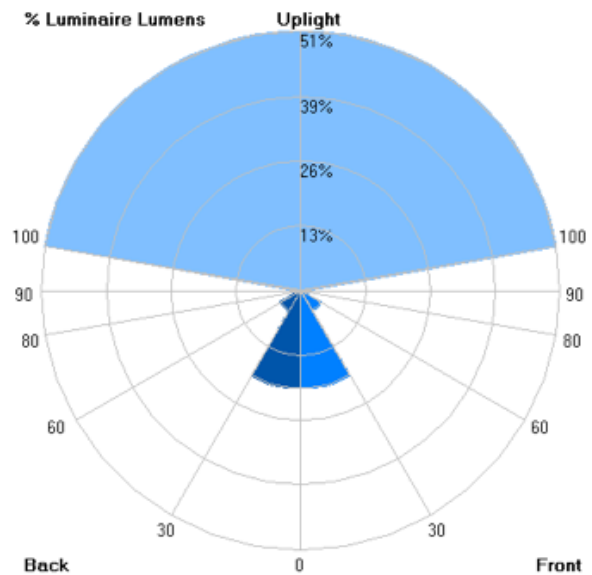
Sample isoilluminance plots. For actual values, use Lumux IES file with photometry software and correct surface reflectances.

Candela



Zonal Lumens - Wall Mount

LCS	Zone	Lumens	%Lum.
FL	(0-30)	224.9	19.4
FM	(30-60)	52.2	4.5
FH	(60-80)	3.4	0.3
FVH	(80-90)	0.9	0.1
BL	(0-30)	224.9	19.4
BM	(30-60)	52.2	4.5
BH	(60-80)	3.4	0.3
BVH	(80-90)	0.9	0.1
UL	(90-100)	1.7	0.1
UH	(100-180)	596.2	51.4
Total		1161	100



Content of specification sheet subject to change

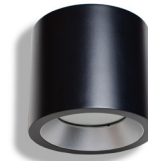
LUMUX

LUMINAIRES IN THE COLLECTION

UP & DOWN LIGHTS - CYLINDRICAL



DL100



DL500



UD110



UD410



UD420



UD430



UD440