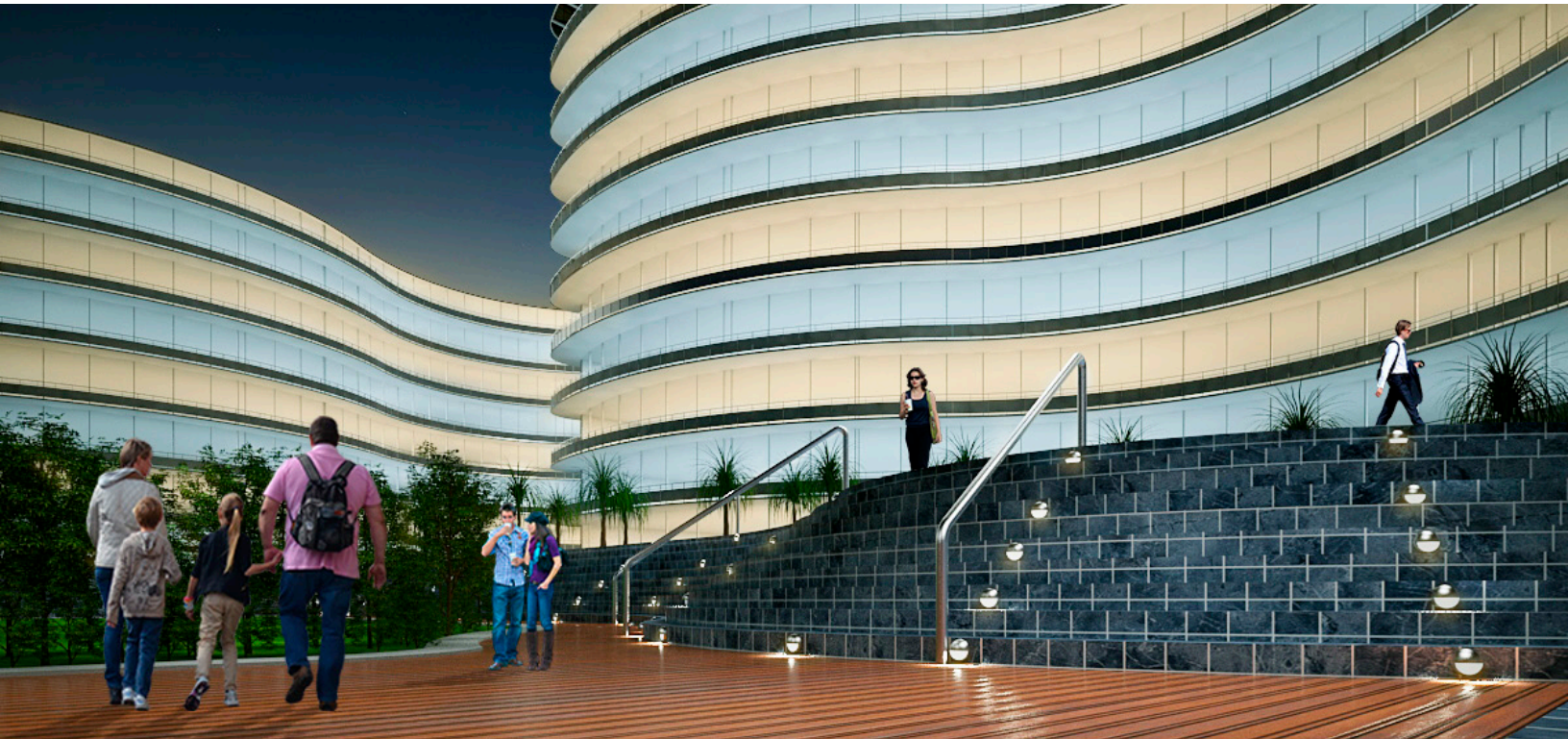


LUMUX

STEP LIGHT

SLS750

DATE: _____
PROJECT: _____
FIRM: _____
CATALOG NO.: _____
COMMENTS: _____



SLS750 from Lumux is a classic architectural step light, precision engineered for durability and performance.

SLS750 offers an ADA LED solution with a distinctively classic design, ideal for illuminating steps, facades, and walls along access ways. SLS Series step lights are energy-efficient for long-lasting indoor and outdoor applications. SLS750 features a durable powder coated diecast aluminum housing retaining an impact-resistant glass lighting window, with a glare-hood to shield the light source.

up to
220 lm

9w

up to
24 lm/W

LUMUX

STEP LIGHT SLS750

SLS750 is a classic architectural ADA step and wall light with faceplate finish options, perfect for campus, resort and residential use.

Ordering Guide

Catalog No.	Wattage	LED Color	Color Temp ¹	Voltage	Finish	Options ²
SLS750	9W	White Amber-TF	2700K 3000K 3500K 4000K	120-277v	Black White Silver Bronze Custom RAL ²	<input type="checkbox"/> 0-10V Dimming

¹Consult factory for additional options

²Consult factory for additional pricing

Catalog No.: _____

Performance Specifications	
Flux 220 lm (4000K)	LER 24 lm/W
Power 9W	120-277v input voltage
Starting temp. rated to -20°F	
0-10v Dimming Driver option	
Lumen Maintenance*: tbd	

Environmental Specifications	
BUG rating: tbd	Amber-TF turtle-friendly option
CRI 80	Color temperature options
IP65	ETL listed for wet-locations
Effective Projected Area: 0.1 sq.ft.	Marine Grade option
5-year limited warranty	Made in the USA

Delivered Lumens & Wattage per color temperature:

	2700K	3000K	3500K	4000K	WATTS
SLS750	150 lm	170 lm	195 lm	220 lm	9W

For higher lumen packages, please consult the Lumux sales team.

Housing: SLS750 features a powder coated housing surface mounted to a standard junction box with vandal-resistant stainless steel screws.

Lens: Sealed one-piece shatter-proof glass window.

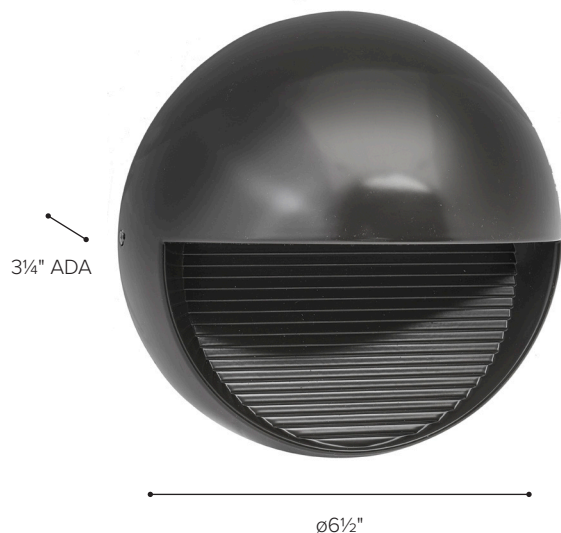
Gasket: Closed-cell silicone foam gasket that seals out moisture, dust, and insects, for weather tight operation.

Mounting: Surface-mounted with mounting bracket to standard 3" and 4" junction box.

Installation: Please refer to installation instructions.

Finish: Zinc-polyester powder coat finish in black, white, silver, bronze, or any custom RAL color. Consult factory for marine grade or anti-microbial finish.

Light Engine: Standard constant current non-dimming driver powering high quality LEDs. 0-10v dimming driver optional.



Dimensions

Content of specification sheet subject to change

LUMUX

STEP LIGHT

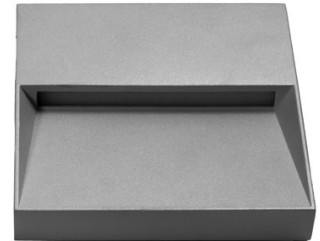
SLS SERIES COLLECTION



SLS100



SLS250



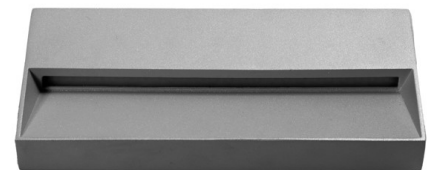
SLS1000



SLS130



SLS650



SLS1400



SLS150



SLS750



SLS1500



SLS350



SLS755

Content of specification sheet subject to change