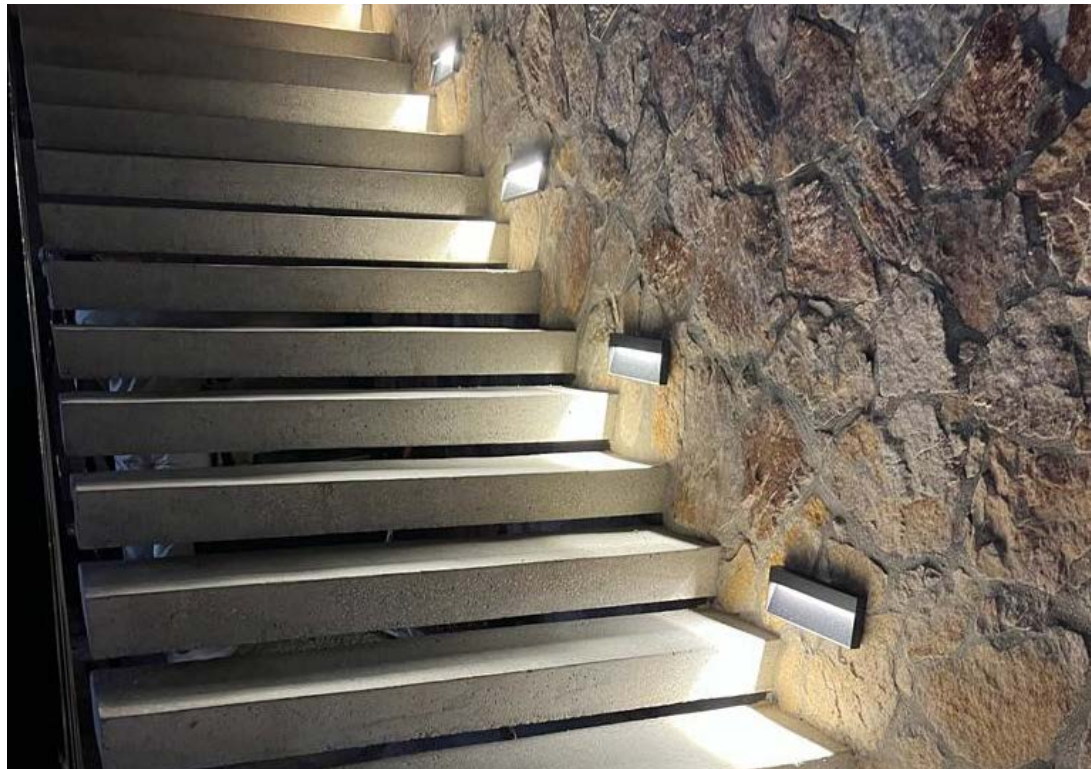


LUMUX

STEP LIGHT

SLS650

DATE: _____
PROJECT: _____
FIRM: _____
CATALOG NO.: _____
COMMENTS: _____



SLS650 powder coated faceplate
glare-hood over impact-resistant glass diffuser

SLS650 from Lumux is an elegant architectural step light featuring a glare hood, precision engineered for durability and performance.

SLS650 offers a distinctively contemporary, minimalist design. Ideal for illuminating steps, facades, and walls, SLS650 is a powerful outdoor LED solution. SL650 step lights are energy-efficient for long-lasting indoor and outdoor applications. SLS650 features a recessed emitting surface behind a glare-hood to shield the light source, and may be surface mounted or recessed mounted with an integrated CPX housing.

up to
85 lm

8w

up to
11 lm/W

LUMUX

STEP LIGHT SLS650

SLS650 is a bold step, facade, and wall light with a modern design and glare hood, perfect for campus, resort and residential use.

Ordering Guide

Catalog No.	LED Color	Color Temp ¹	Voltage	Finish	Options ²
SLS650	White	2700K	120-277v	Black	<input type="checkbox"/> 0-10v Dimming <input type="checkbox"/> Surface Mount <input type="checkbox"/> Recessed Mount
	Amber-TF	3000K		White	
	Amber	3500K		Silver	
	Red	4000K		Bronze	
	Green			Custom RAL ²	
	Blue				

¹Consult factory for additional options

²Consult factory for additional pricing

Catalog No.: _____

Performance Specifications	
Flux 85 lm (4000K)	LER 11 lm/W
Power 8W	120-277v input voltage
Starting temp. rated to -20°F	Constant Current
Dimmable driver (0-10v) option	
Lumen Maintenance*: TBD	

Environmental Specifications	
BUG rating: B0-U1-G0	LZ1 Dark Sky Compliant
CRI 80	Color temperature options
IP65	ETL listed for wet-locations
Effective Projected Area n/a	Marine Grade option
5-year limited warranty	Made in the USA

Delivered Lumens & Wattage per color temperature:

	2700K	3000K	3500K	4000K	WATTS
SLS650	75 lm	80 lm	80 lm	85 lm	8W

For higher lumen packages, please consult the Lumux sales team.



SLS650 powder coated faceplate
glare-hood over impact-resistant glass diffuser

Housing: SLS650 features a powder-coated glare hood faceplate mounted to a diecast low-copper aluminum housing with vandal-resistant stainless steel screws.

Lens: Sealed one-piece shatter-proof frosted glass diffuser.

Gasket: Closed-cell silicone foam gasket that seals out moisture, dust, and insects, for weather tight operation.

Mounting: Surface-mounted or recessed, with the housing acting as the concrete pour-box.

Installation: Please refer to installation instructions.

Finish: Zinc-polyester powder coat finish in black, white, silver, bronze, or any custom RAL color. Consult factory for marine grade or anti-microbial finish.

Dimensions

*Lumen Maintenance Report: TBD

Content of specification sheet subject to change

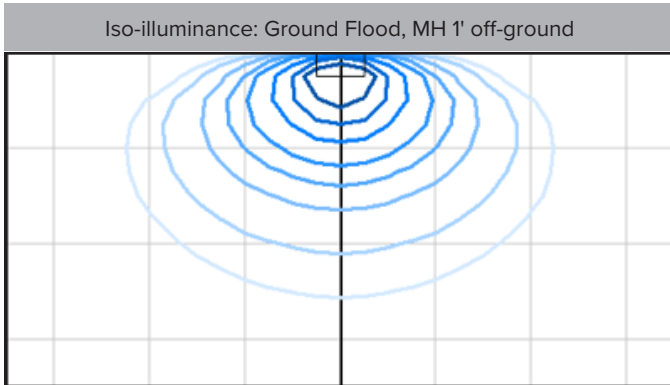
LUMUX

STEP LIGHT

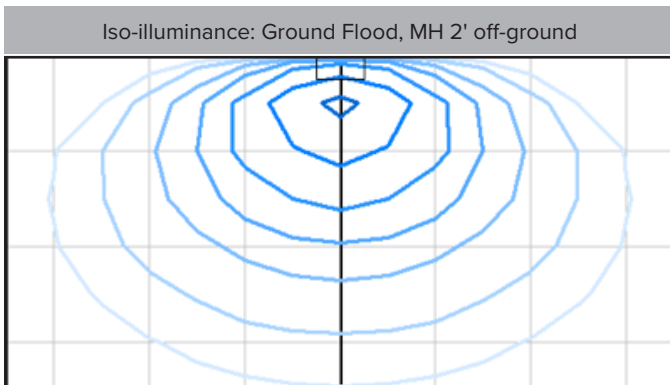
SLS650

Photometry	IESNA: LM-63-2002
TEST: 1228037	TEST LAB: UL Ver. Services Inc.
LUMINAIRE: SLS650	DATE: 2016-03-29
IES Classification: Type III	Longitudinal Class: Very Short
Luminaire Lumens	85 (4000K)
Luminaire Efficacy Rating (LER)	11
Total Luminaire Watts	8.091W
Upward Waste Light Ratio	0.06
Max. Candela	72
Max. Cd. < 90° Vertical	72
Max. Cd. (At 90 Deg. Vert.)	9 (10.6%)
Max. Cd. (80 to <90 Deg. Vert.)	14.1 (16.6% luminaire)
Cutoff Classification: Cutoff	BUG Rating: B0-U1-G0

Technical aspects may change without notice.

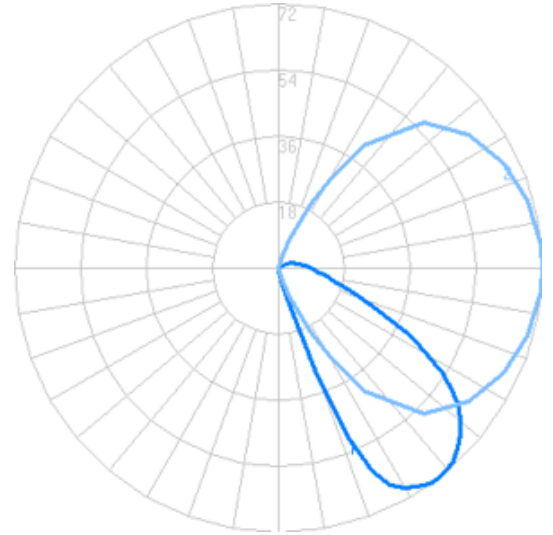


Foot-candles: 0.1, 0.2, 0.5, 1, 2, 5, 10, 20 | Grid spacing 2'



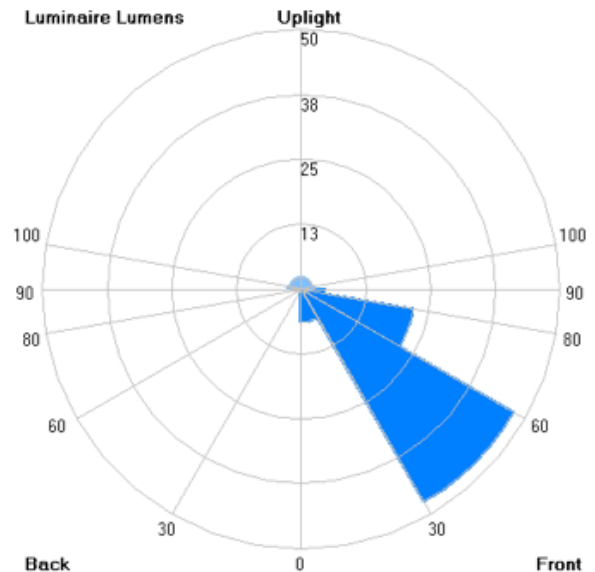
Foot-candles: 0.1, 0.2, 0.5, 1, 2, 5, 10 | Grid spacing 2'

Candela



Zonal Lumens

LCS	Zone	Lumens	%Lum.
FL	(0-30)	6.3	7.5
FM	(30-60)	47.3	55.7
FH	(60-80)	22.0	25.9
FVH	(80-90)	4.6	5.4
BL	(0-30)	0.0	0.0
BM	(30-60)	0.0	0.0
BH	(60-80)	0.0	0.0
BVH	(80-90)	0.0	0.0
UL	(90-100)	2.5	3.0
UH	(100-180)	2.2	2.6
Total		695	100



Content of specification sheet subject to change

LUMUX LIGHTING

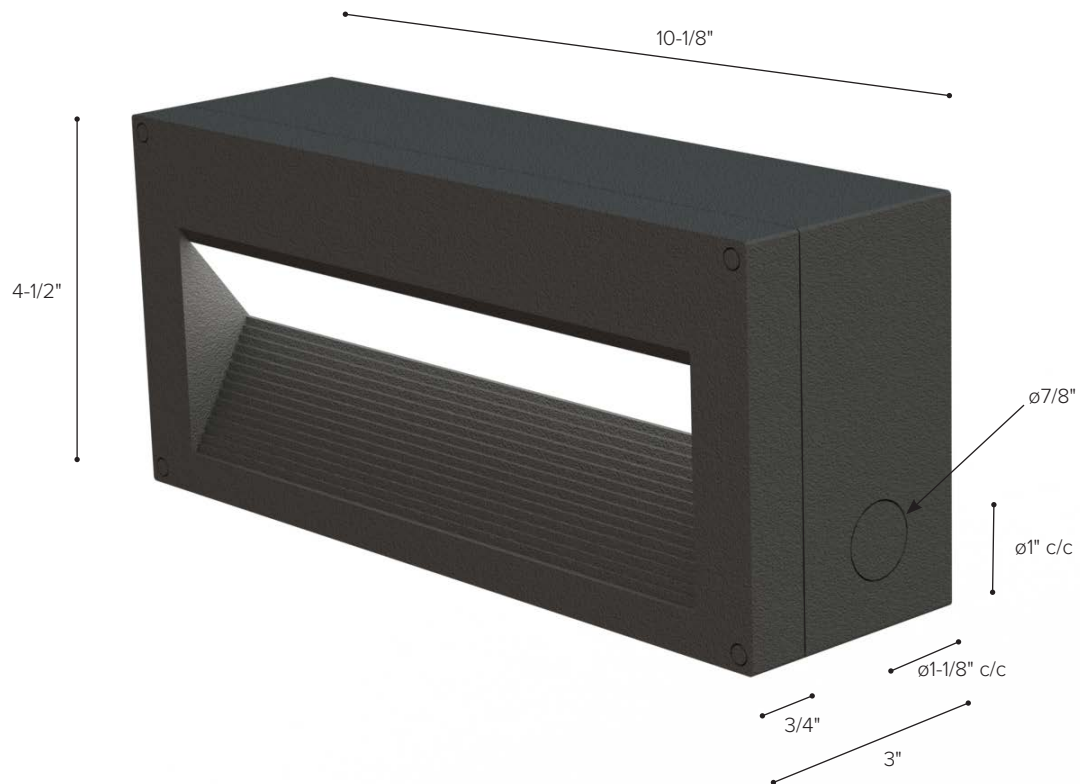
Sample isoilluminance plots. For actual values, use Lumux IES file with photometry software and correct surface reflectances.

7803 Industry Ave, Pico Rivera, CA 90660
sales@lumux.com | 562-801-5100

LUMUX

HOUSING & CPX CONCRETE POUR BOX DIMENSIONS

SLS650



Luminaire Housing with integrated Concrete Pour Box

Content of specification sheet subject to change