

LUMUX

STEP LIGHT

SLB200

DATE:

PROJECT:

FIRM:

CATALOG NO.:

COMMENTS:



SLB200 from Lumux is an elegant architectural step light, precision engineered for durability and performance.

SLB200 offers a distinctively classic design. Ideal for illuminating steps, facades, walls and floors along access ways, SLB200 is a powerful ADA LED solution. SLB200 Series step lights are energy-efficient for long-lasting indoor and outdoor applications. The SLB200 Series features a brass faceplate retaining an impact-resistant glass diffuser, seamlessly integrated to a durable diecast brass housing, where certain models feature protective grills or glare-hoods to shield the light source.

up to
40 lm

3W

up to
13 lm/W

LUMUX LIGHTING

7803 Industry Ave, Pico Rivera, CA 90660
sales@lumux.com | 562-801-5100

Content of specification sheet subject to change

LUMUX

STEP LIGHT SLB200

The SLB200 are classic ADA step and wall lights made of heavy-duty corrosion resistant brass, perfect for seaside, campus, and resort use.

Ordering Guide

Catalog No.	Wattage	LED Color	Color Temp ¹	Voltage	Finish	Options ²
SLB200	3W	White Amber-TF	2700K 3000K 3500K 4000K	120-277v	Brass Black White Silver Bronze Custom RAL ²	<input type="checkbox"/> 0-10V Dimming

¹Consult factory for additional options

Catalog No.: _____

Performance Specifications	
Flux 40 lm (4000K)	LER 13 lm/W
Power 3W	120-277v input voltage
Starting temp. rated to -20°F	
0-10v Dimming Driver option	
Lumen Maintenance*: tbd	

Environmental Specifications	
BUG rating: tbd	Amber-TF turtle-friendly option
CRI 80	Color temperature options
IP65	ETL listed for wet-locations
Effective Projected Area: n/a	Marine Grade option
5-year limited warranty	Made in the USA

Delivered Lumens & Wattage per color temperature:

	2700K	3000K	3500K	4000K	WATTS
SLB200	25 lm	30 lm	35 lm	40 lm	3W

*Estimated lumens. For higher lumen packages, please consult the Lumux sales team.

Housing: SLB200 features heavy-duty construction of corrosion resistant brass.

Lens: Sealed one-piece shatter-proof glass window

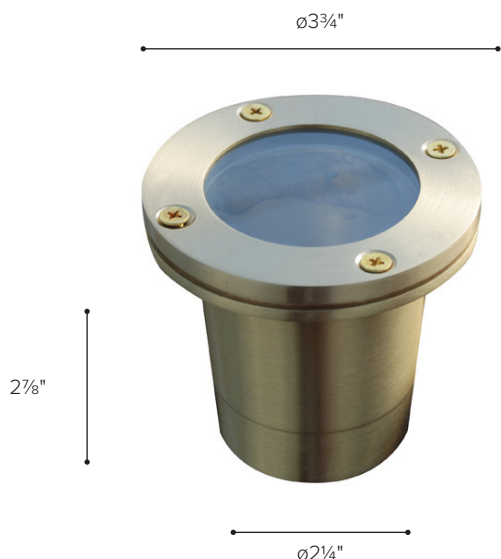
Gasket: Closed-cell silicone foam gasket that seals out moisture, dust, and insects, for weather tight operation.

Mounting: Recessed mounted, with optional CPX concrete pour box provided.

Installation: Please refer to installation instructions.

Finish: Corrosion resistant brass, with optional zinc-polyester powder coat finish in black, white, silver, bronze, or any custom RAL color. Consult factory for marine grade or anti-microbial finish.

Light Engine: Standard constant current non-dimming driver powering high quality LEDs. 0-10v dimming driver optional.



Dimensions

LUMUX

HOUSING & CPX CONCRETE POUR BOX DIMENSIONS

SLB200

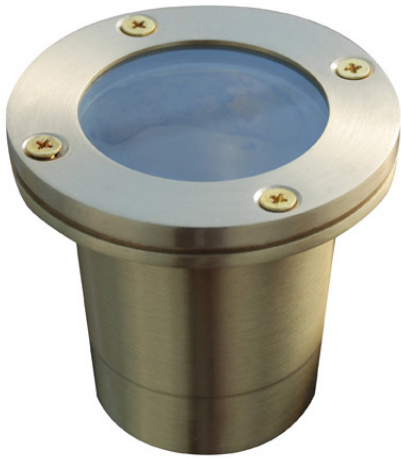


CPX Concrete Pour Box

LUMUX

STEP LIGHT

SLB SERIES COLLECTION



SLB200



SLB233



SLB250



SLB255