

LUMUX

STEP LIGHT

SL700

DATE: _____
PROJECT: _____
FIRM: _____
CATALOG NO: _____
COMMENTS: _____



SL700 from Lumux is an elegant architectural ADA step light, precision engineered for durability and performance.

SL700 offers a distinctively contemporary, minimalist design. Ideal for illuminating steps and walkways, SL700 is a powerful outdoor LED solution. SL700 Series step lights are energy-efficient for long-lasting indoor and outdoor applications. SL700 Series luminaires feature a surface mounted housing with a glare-hood to shield the light source, and integrated 0-10v dimming.

up to
420 lm

8w

up to
54 lm/W

LUMUX

STEP LIGHT SL700

SL700 is an elegant ADA step, column and wall light with a discreet glare hood and 0-10v dimming, perfect for campus, resort and residential use.

Ordering Guide

Catalog No.	LED Color	Color Temp ¹	Voltage	Finish	Options ²
SL700	White	2700K	120-277v	Black	
	Amber-TF	3000K		White	
		3500K		Silver	
		4000K		Bronze	
		Custom RAL ²			

¹Consult factory for additional options

²Consult factory for additional pricing

Catalog No.: _____

Performance Specifications	
Flux up to 420 lm (4000K)	LER up to 54 lm/W
Power up to 8W	120-277v input voltage
Starting temp. rated to -20°F	Surface mounted
0-10v Dimming Integrated	
Lumen Maintenance*: tbd	

Environmental Specifications	
BUG rating: B0-U1-G0	Amber-TF turtle-friendly option
CRI 80	Color temperature options
IP65	ETL listed for wet-locations
Effective Projected Area ≤ 1 sq.ft.	Marine Grade option
5-year limited warranty	Made in the USA

Delivered Lumens & Wattage per color temperature:

	2700K	3000K	3500K	4000K	WATTS
SL700	400 lm	400 lm	400 lm	420 lm	8W

For higher lumen packages, please consult the Lumux sales team.

Housing: Heavy-duty construction corrosion resistant, low-copper die-cast aluminum. Enclosed lens secured with vandal resistant, stainless-steel fasteners.

Lens: Sealed one-piece shatter-proof clear polycarbonate lens.

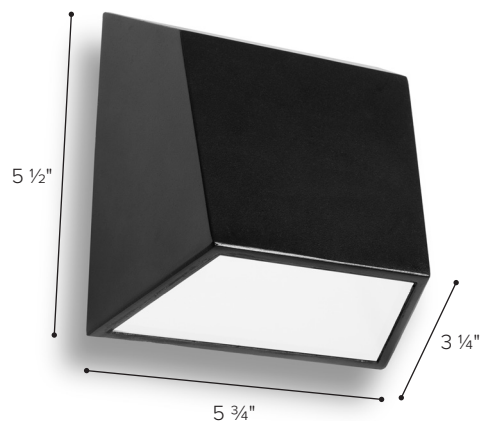
Gasket: Closed-cell silicone foam gasket seals out moisture, dust, and insects, for weather-tight operation. IP65 - ETL listed for wet locations.

Mounting: Surface-mounted with mounting bracket to standard 3" and 4" junction box.

Installation: Please refer to installation instructions.

Finish: Zinc polyester powder coat finish in black, white, silver, bronze, or any custom RAL color. Consult factory for marine grade or anti-microbial finish.

Light Engine: Constant Current driver with integrated 0-10v dimming, powering high quality LEDs.



Dimensions

*Lumen Maintenance Report: tbd

Content of specification sheet subject to change

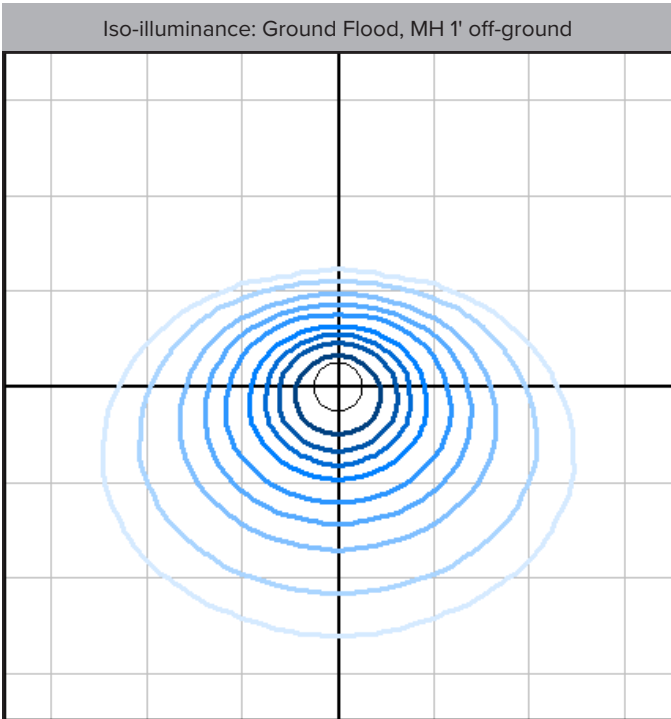
LUMUX

STEP LIGHT SL700



Photometry	IESNA: LM-63-2002
TEST: L102312703	TEST LAB: Light Laboratory Inc.
LUMINAIRE: SL700	DATE: 2023-11-10
IES Classification: Type II	Longitudinal Class: Very Short
Luminaire Lumens	421 (4000K)
Luminaire Efficacy Rating (LER)	54
Total Luminaire Watts	7.87W
Upward Waste Light Ratio	0.01
Max. Candela	246 (10H, 10V)
Max. Cd. < 90° Vertical	246 (10H, 10V)
Max. Cd. (At 90 Deg. Vert.)	6 (1.4%)
Max. Cd. (80 to <90 Deg. Vert.)	16 (3.8%)
Cutoff Classification: Cutoff	BUG Rating: B0-U1-G0

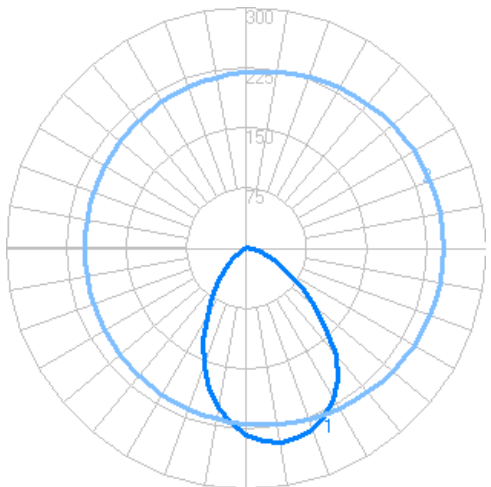
Technical aspects may change without notice.



Foot-candles: 0.1, 0.2, 0.5, 1, 2, 5, 10, 20, 50 | Grid spacing 2'

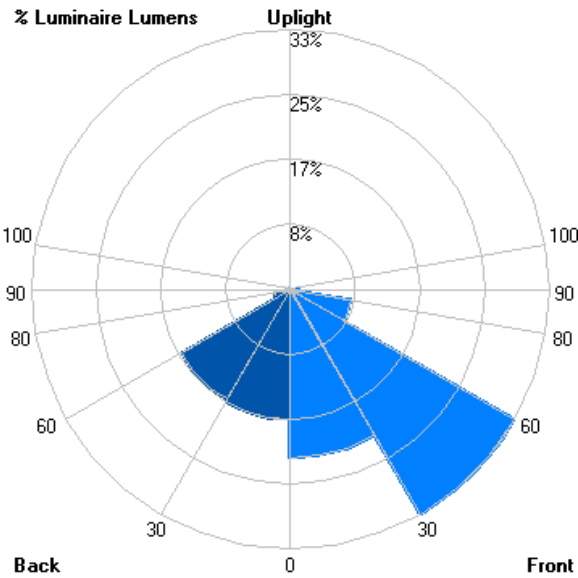
Sample isoilluminance plots. For actual values, use Lumux IES file with photometry software and correct surface reflectances.

Candela



Zonal Lumens

LCS	Zone	Lumens	%Lum.
FL	(0-30)	91.2	21.7
FM	(30-60)	140.4	33.4
FH	(60-80)	33.5	8.0
FVH	(80-90)	4.8	1.1
BL	(0-30)	70.4	16.7
BM	(30-60)	68.5	16.3
BH	(60-80)	8.7	2.1
BVH	(80-90)	0.7	0.2
UL	(90-100)	2.0	0.5
UH	(100-180)	0.8	0.2
Total		421	100

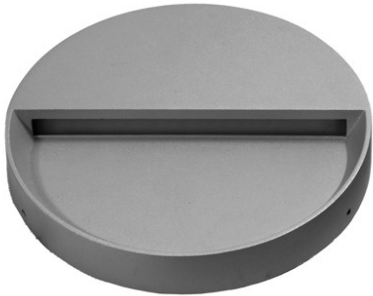


Content of specification sheet subject to change

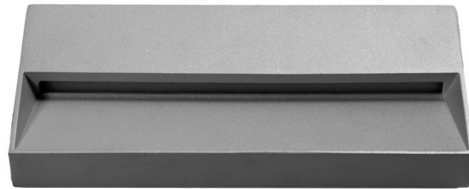
LUMUX

LUMINAIRES IN THE COLLECTION

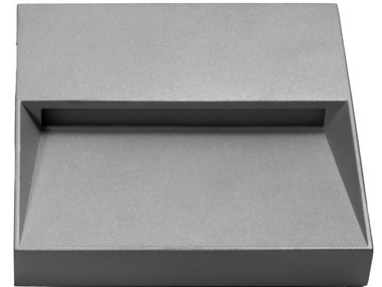
STEP LIGHTS WITH GLARE HOOD



SLS1500



SLS1400



SLS1000



SLS750



SL700



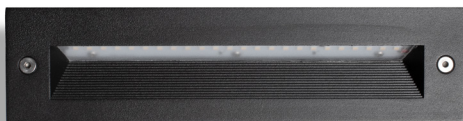
SLS755



SL650L-6



SL650



SL650L-10



SL650L-13



SLS650