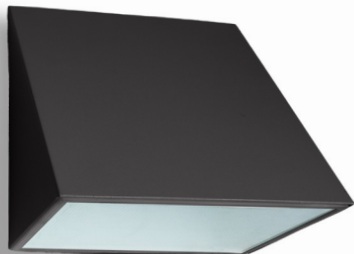


LUMUX

DOWN LIGHT

DL600

DATE: _____
PROJECT: _____
FIRM: _____
CATALOG NO.: _____
COMMENTS: _____



DL600 is a distinct architectural luminaire, precision engineered for durability and performance.

DL600 offers a distinctively contemporary, minimalist design. Ideal for illuminating walkways, porches, or porticos, or as accent lighting, DL600 is a powerful outdoor LED solution. DL600 features a sheet metal housing offered in powder coated aluminum or natural brass, and an optional integral battery pack delivers 1,000 lm over 90 min. DL600 is energy-efficient for long-lasting indoor and outdoor applications.

3,300 lm **40** w up to **84** lm/W

Content of specification sheet subject to change

LUMUX

DOWN LIGHT DL600

DL600 is a high performance luminaire with optional 0-10v dimming, integral emergency battery pack, occupancy sensor, and photocell.

Ordering Guide

Catalog No.	Wattage	LED Color	Color Temp ¹	Voltage	Finish	Options ²
DL600	23W	White	2700K	120-277v	Brass	<input type="checkbox"/> 0-10v Dimming <input type="checkbox"/> Photocell <input type="checkbox"/> Occupancy Sensor <input type="checkbox"/> Integral Battery Pack
	40W	Amber-TF	3000K		Black	
		Red	3500K		White	
		Green	4000K		Silver	
		Blue			Bronze	
					Custom RAL ²	

¹Consult factory for additional options

²Consult factory for additional pricing

Catalog No.: _____

Performance Specifications	
Flux 3,300 lm (4000K)	LER 84 lm/W (4000K)
Power 40W	120-277v input voltage
Starting temp. rated to -20°F	Photocell option
0-10v Dimming Driver option	Occupancy Sensor option
Lumen Maintenance*: L70 > 60K hrs	Integral Battery Pack option

Environmental Specifications	
Downlight BUG: zero uplight	Amber-TF turtle-friendly option
CRI 80	Color temperature options
IP65	ETL listed for wet-locations
Effective Projected Area: 1 sq.ft.	Marine Grade option
5-year limited warranty	Made in the USA

Delivered Lumens & Wattage per color temperature:

	2700K	3000K	3500K	4000K	WATTS
DL600 - 23W	1300 lm	1350 lm	1400 lm	1400 lm	23W
DL600 - 40W	3100 lm	3200 lm	3300 lm	3300 lm	40W
DL600 - IBP	1000 lm	1000 lm	1000 lm	1000 lm	10W

For higher lumen packages, please consult the Lumux sales team.

Housing: Heavy-duty construction of corrosion resistant aluminum or brass sheetmetal, secured with vandal-resistant, stainless steel screws.

Lens: Sealed one-piece shatter-proof clear glass diffuser.

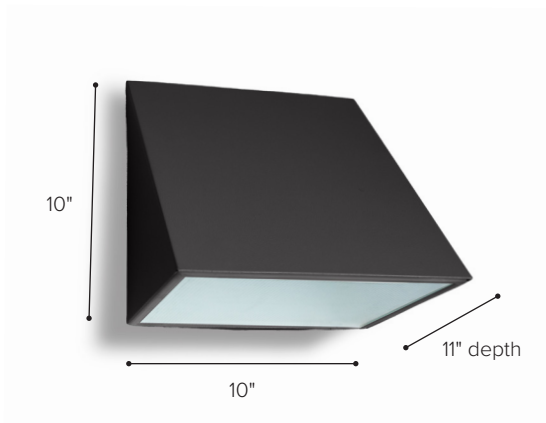
Gasket: Closed-cell silicone foam gasket seals out moisture, dust, and insects, for weather-tight operation. IP65 - ETL listed for wet-locations.

Mounting: Surface mounted to wall, column or ceiling. Mounting bracket provided fits any standard 3" or 4" junction box.

Finish: Natural brass or zinc polyester powder coat finish in black, white, silver, bronze, or any custom RAL color. Consult factory for marine grade or anti-microbial finish.

Light Engine: Constant Current driver with optional 0-10v dimming, powering high quality LEDs.

Integral Battery Pack: Optional emergency 10W IBP provides 1,000 lumens with 90 minute battery life.



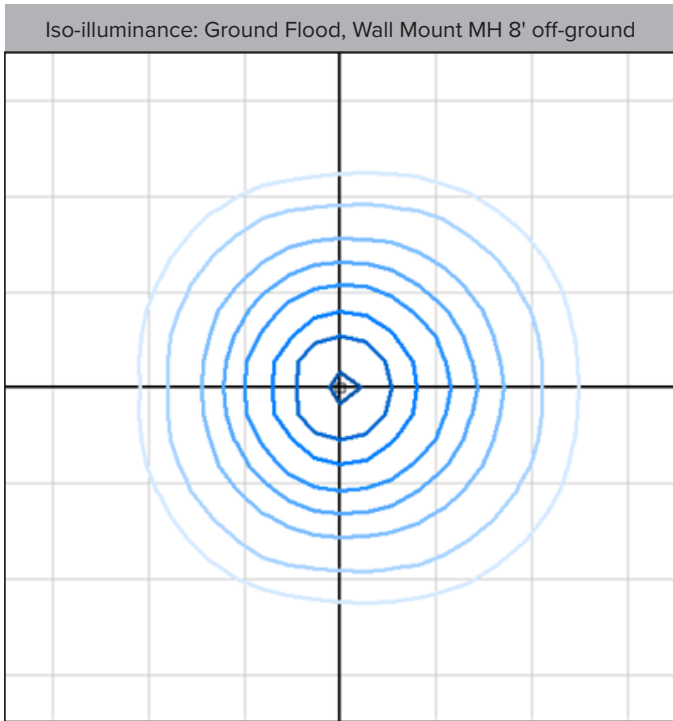
*Lumen Maintenance Report: Nichia
Test Documentation No.: NFSW757GT-V3

LUMUX

DOWN LIGHT DL600

Photometry	IESNA: LM-63-2002
TEST: L012310302	TEST LAB: Light Laboratory Inc.
LUMINAIRE: DL600	DATE: 2023-01-10
IES Classification: Type II	Longitudinal Class: Very Short
Luminaire Lumens	3333 (4000K)
Luminaire Efficacy Rating (LER)	84 lm/W
Total Luminaire Watts	39.55W
Upward Waste Light Ratio	0
Max. Candela	1590
Max. Cd. < 90° Vertical	1590
Max. Cd. (At 90 Deg. Vert.)	9 (0.3% Luminaire)
Max. Cd. (80 to <90 Deg. Vert.)	96 (2.9% Luminaire)
Cutoff Classification: N.A.	Zero Uplight

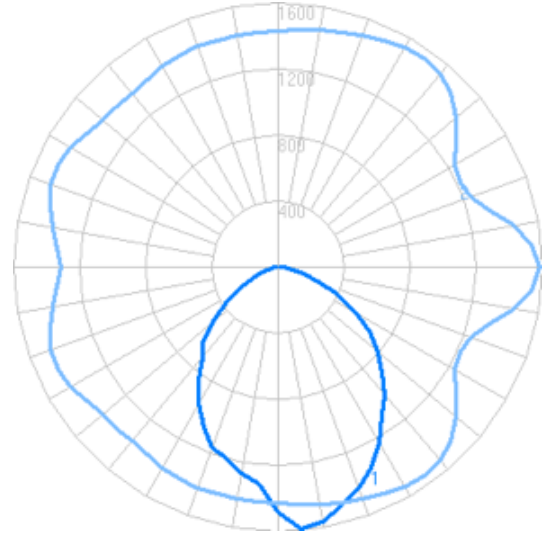
Technical aspects may change without notice.



Foot-candles: 0.1, 0.2, 0.5, 1, 2, 5, 10, 20 | Grid spacing 10'

Sample isoilluminance plot. For actual values, use Lumux IES file with photometry software and correct surface reflectances.

Candela



Zonal Lumens Summary

Zone	Lumens
0-10	135
10-20	381
20-30	577
30-40	668
40-50	623
50-60	479
60-70	301
70-80	136
80-90	33
90-180	0

Luminance Data (cd/sq.m)

Angle in Degrees	Average 0 Deg.	Average 45 Deg.	Average 90 Deg.
45	20746	20074	20282
55	19460	16774	15688
65	15281	14505	10161
75	10322	10829	6396
85	6394	5642	3949

Content of specification sheet subject to change

LUMUX

LUMINAIRES IN THE COLLECTION

UP & DOWN LIGHTS - RECTANGULAR



DL800
5" housing



UD800
5" housing



UD440
10 1/4" housing



UD900-12
12" housing



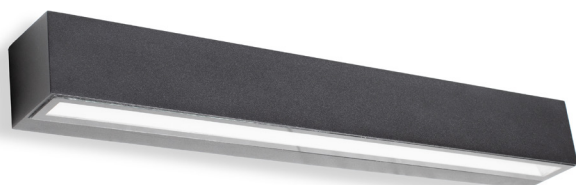
DL300
6 1/2" wall pack



UD900-15
15" housing



DL300-IBP
11 3/4" wall pack w/ IBP option



UD900-20
20" housing



UD500
16" wall pack w/ IBP option