

LUMUX

DOWN LUMINAIRES

DL100

DATE: _____
PROJECT: _____
FIRM: _____
CATALOG NO.: _____
COMMENTS: _____



DL Series luminaires from Lumux are elegant architectural downlights, precision engineered for durability and performance.

DL100 offers a distinctively contemporary, minimalist design. Ideal for illuminating understory walkways, porches, or porticos, DL100 is a powerful outdoor LED solution. DL100 features a diecast aluminum housing with a shielded light source to enhance visual comfort. DL Series downlights are energy-efficient for long-lasting indoor and outdoor applications.

900 lm

10 w

up to
93 lm/W

LUMUX LIGHTING

7803 Industry Ave, Pico Rivera, CA 90660
sales@lumux.com | 562-801-5100

Content of specification sheet subject to change

LUMUX

DOWN LUMINAIRES DL100

DL100 is a high-efficacy ceiling mount downlight, with integrated 0-10v dimming and turtle-friendly Amber-TF option.

Ordering Guide

Catalog No.	Wattage	LED Color	Color Temp ¹	Voltage	Finish	Options ²
DL100	10W	White Amber-TF	2700K 3000K 3500K 4000K	120-277v	Black White Silver Bronze Custom RAL ²	

¹Consult factory for additional options

²Consult factory for additional pricing

Catalog No.: _____

Performance Specifications	
Flux 900 lm (4000K)	LER 93 lm/W (4000K)
Power 10W	120-277v input voltage
Starting temp. rated to -20°F	
Integrated 0-10v Dimming	
Lumen Maintenance*: L90 > 100K hrs	

Environmental Specifications	
BUG Rating: B1-U0-G0	Amber-TF turtle-friendly option
CRI 80	Color temperature options
IP65	ETL listed for wet-locations
Effective Projected Area: < 0.2 sq. ft.	Marine Grade option
5-year limited warranty	Made in the USA

Delivered Lumens & Wattage per color temperature:

	2700K	3000K	3500K	4000K	WATTS
DL100	800 lm	850 lm	875 lm	900 lm	10W

For higher lumen packages, please consult the Lumux sales team.



Housing: Heavy-duty construction of corrosion resistant, lowcopper diecast aluminum, enclosing a glass optic and anodized aluminum reflector with a step baffle frame, secured with vandal resistant, stainless steel screws.

Lens: Sealed one-piece shatter-proof clear glass diffuser.

Gasket: Closed-cell silicone foam gasket seals out moisture, dust, and insects, for weather-tight operation. IP65 - ETL listed for wet-locations.

Mounting: Ceiling mounted. Mounting bracket provided fits any standard 3" or 4" junction box.

Installation: Please refer to installation instructions.

Finish: Zinc polyester powder coat finish in black, white, silver, bronze, or any custom RAL color. Consult factory for marine grade or anti-microbial finish.

Light Engine: Constant Current driver with integrated 0-10v dimming, powering high quality LEDs.

*Lumen Maintenance Report: Nichia
Test Documentation No.: NFSW757GT-V3

Content of specification sheet subject to change

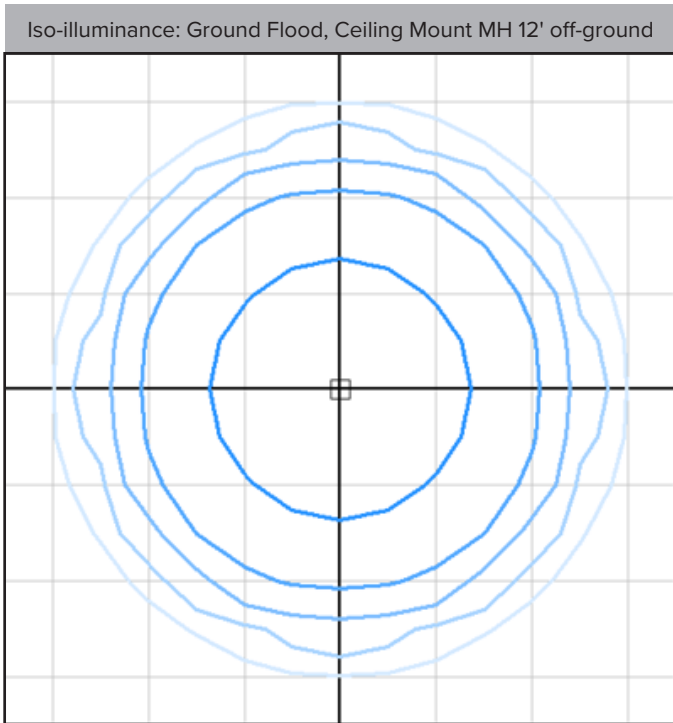
LUMUX

DOWN LUMINAIRES

DL100

Photometry	IESNA: LM-63-2002
TEST: L042310402	TEST LAB: Light Laboratory Inc.
LUMINAIRE: DL100	DATE: 2023-04-12
IES Classification: Type V	Longitudinal Class: Very Short
Luminaire Lumens	907 (4000K)
Luminaire Efficacy Rating (LER)	93 lm/W
Total Luminaire Watts	9.76W
Upward Waste Light Ratio	0.0
Max. Candela	695
Max. Cd. < 90° Vertical	695
Max. Cd. (At 90 Deg. Vert.)	0 (0.0% Luminaire)
Max. Cd. (80 to <90 Deg. Vert.)	4 (0.4% Luminaire)
Cutoff Classification: N.A.	BUG rating B1-U0-G0

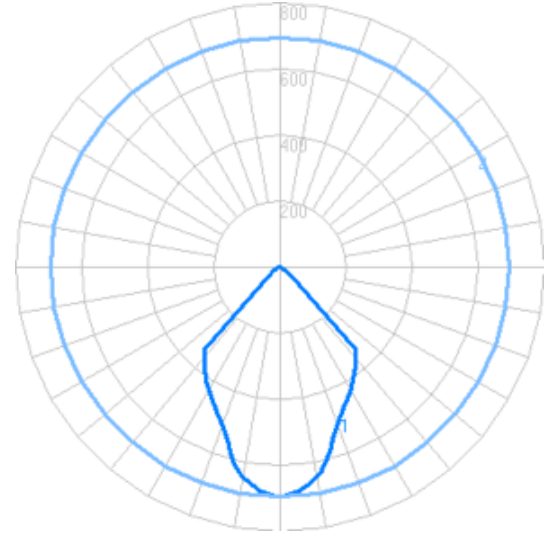
Technical aspects may change without notice.



Foot-candles: 0.1, 0.2, 0.5, 1, 2 | Grid spacing 5'

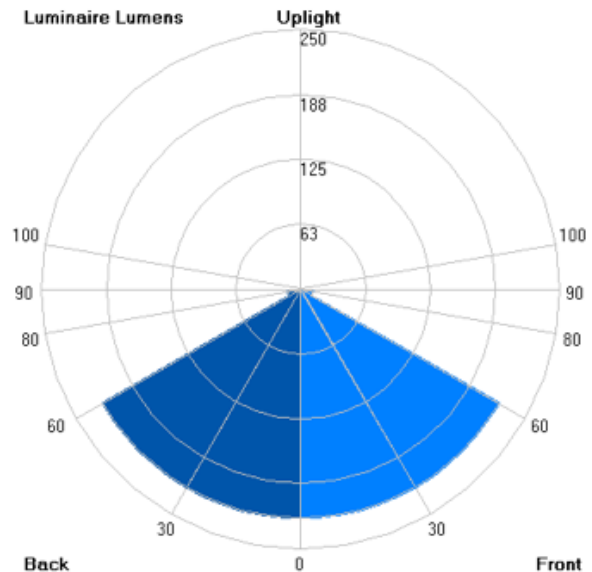
Sample isoilluminance plot. For actual values, use Lumux IES file with photometry software and correct surface reflectances.

Candela



Zonal Lumens

LCS	Zone	Lumens	%Lum.
FL	(0-30)	220.3	24.3
FM	(30-60)	220.2	24.3
FH	(60-80)	11.7	1.3
FVH	(80-90)	1.4	0.2
BL	(0-30)	220.3	24.3
BM	(30-60)	220.2	24.3
BH	(60-80)	11.7	1.3
BVH	(80-90)	1.4	0.2
UL	(90-100)	0.0	0.0
UH	(100-180)	0.0	0.0
Total		907	100



Content of specification sheet subject to change

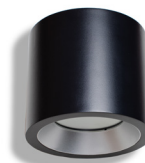
LUMUX

UP & DOWN LIGHTS

LUMINAIRES IN THE COLLECTION



DL100



DL500



UD110



UD410



UD420



UD430



UD440

LUMUX LIGHTING

7803 Industry Ave, Pico Rivera, CA 90660
sales@lumux.com | 562-801-5100

Content of specification sheet subject to change