

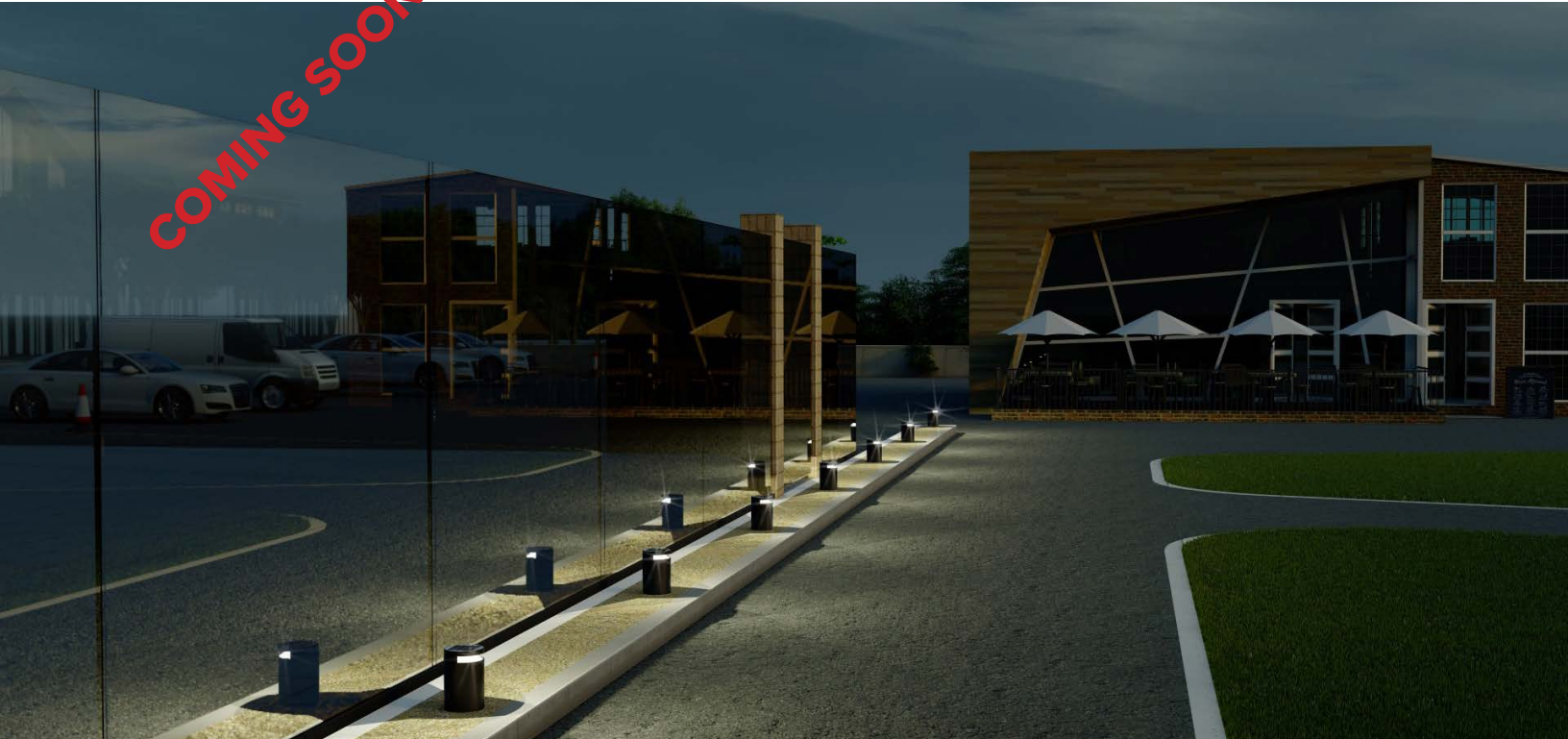
LUMUX

BOLLARD

BL900S

DATE: _____
PROJECT: _____
FIRM: _____
CATALOG NO.: _____
COMMENTS: _____

COMING SOON!



BL900S from Lumux is an elegant, architectural bollard that excels at defining spaces, both during the day and at night.

BL900S offers a distinctively contemporary, minimalistic design. Ideal for illuminating paths and plazas, BL900S is a powerful outdoor LED solution. BL900S is constructed from heavy-duty aluminum extrusion, providing durability that meets the highest standards. Part of the Lumux bollard lighting collection, this luminaire is offered in tall (BL900) and short (BL900S) models.



up to **3,000** lm **30**W up to **100** lm/W

LUMUX LIGHTING

7803 Industry Ave, Pico Rivera, CA 90660
sales@lumux.com | 562-801-5100

Content of specification sheet subject to change

LUMUX

BOLLARD BL900S

BL900S is an elegant medium-height gateway, path, and plaza light with a modern design.

Ordering Guide

Catalog No.	LED Color	Color Temp ¹	Voltage	Finish	Options ²
BL900S	White	2700K	120-277v	Black	<input type="checkbox"/> 0-10v Dimming <input type="checkbox"/> GFCI Dual Recepticle <input type="checkbox"/> Occupancy Sensor <input type="checkbox"/> Photocell
		3000K		White	
		3500K		Silver	
		4000K		Bronze	
				Custom RAL ²	

¹Consult factory for additional options

²Consult factory for additional pricing

Catalog No.: _____

Performance Specifications	
Flux 3,000 lm	LER 100 lm/W
Power 30W	120-277v input voltage
Starting temp. rated to -20°F	GFCI dual recepticle option
Dimmable driver (0-10v) option	Occupancy sensor option
Lumen Maintenance*: TBD	Photocell option

Environmental Specifications	
BUG rating: B0-U0-G0	
CRI 80	Color temperature options
IP65	ETL listed for wet-locations
Effective Projected Area 0.6ft ²	Marine Grade option
5-year limited warranty	Made in the USA

Delivered Lumens & Wattage per color temperature:

	2700K	3000K	3500K	4000K	WATTS
BL900S	3,000 lm	3,000 lm	3,000 lm	3,000 lm	30W

Housing: Heavy-duty construction of corrosion resistant, low-copper extruded aluminum. All fasteners are vandal resistant stainless-steel.

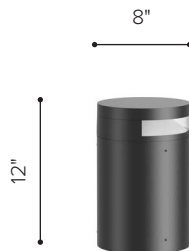
Lens: Sealed one-piece, shatter-proof, UV-rated clear glass diffuser.

Gasket: Closed-cell silicone foam gasket that seals out moisture, dust, and insects, for weather tight operation.

Mounting: Secures with galvanized anchor bolts.

Installation: Please refer to installation instructions.

Finish: Zinc polyester powder coat finish in black, white, silver, bronze, or any custom RAL color. Consult factory for marine grade or anti-microbial finish.



Dimensions

*Lumen Maintenance Report: TBD

Content of specification sheet subject to change

LUMUX

LUMINAIRES IN THIS COLLECTION



BL900



BL900S