

# LUMUX

## BOLLARD

BL700

DATE: \_\_\_\_\_  
PROJECT: \_\_\_\_\_  
FIRM: \_\_\_\_\_  
CATALOG NO: \_\_\_\_\_  
COMMENTS: \_\_\_\_\_



**BL700 from Lumux is a bold architectural bollard that excels at defining spaces, both during the day and at night.**

BL700 offers a distinctively classic design, ideal for illuminating access ways, paths, and plazas. Offered in turtle-friendly Amber-TF, BL700 is perfect for seaside lighting. BL700 is a powerful outdoor LED solution with optional 0-10v dimming, energy-efficient for long-lasting outdoor applications. BL700 is constructed from heavy-duty diecast aluminum, providing durability that meets the highest standards. Part of the Lumux area lighting collection that includes the companion BL700s short bollard and WS-BL700 wall sconce.

up to  
**950** lm

**23**w

up to  
**43** lm/W

LUMUX LIGHTING

7803 Industry Ave, Pico Rivera, CA 90660  
sales@lumux.com | 562-801-5100

Content of specification sheet subject to change

# LUMUX

## BOLLARD BL700

Perfect for path and plaza lighting, BL700 is a bold yet classic bollard with optional 0-10v dimming and Amber-TF turtle-friendly light.

### Ordering Guide

Catalog No.	Wattage	LED Color	Color Temp <sup>1</sup>	Voltage	Finish	Options <sup>2</sup>
BL700	23W	White	2700K	120-277v	Black	<input type="checkbox"/> 0-10v Dimming <input type="checkbox"/> PhotoCell <input type="checkbox"/> Occupancy Sensor <input type="checkbox"/> GFCI Dual Receptacle <input type="checkbox"/> Integral Battery Pack
		Amber-TF	3000K		White	
			3500K		Silver	
			4000K		Bronze	
					Custom RAL <sup>2</sup>	

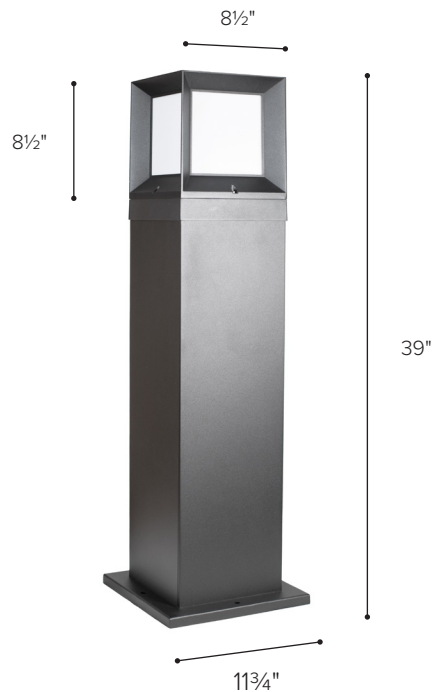
<sup>1</sup>Consult factory for additional options

<sup>2</sup>Consult factory for additional pricing

Catalog No.: \_\_\_\_\_

Performance Specifications	
Flux up to 950 lm	LER up to 43 lm/W
Power up to 23W	120-277v input voltage
Starting temp. rated to -20°F	Sensor options
0-10v Dimming driver option	Dual GFCI option
Lumen Maintenance*: tbd	Integral Battery Pack option

Environmental Specifications	
BUG rating: B0-U3-G1	Amber-TF turtle-friendly option
CRI 80	Color temperature options
IP65	ETL listed for wet-locations
Effective Projected Area 3 sq.ft.	Marine Grade option
5-year limited warranty	Made in the USA



### Delivered Lumens & Wattage per color temperature:

	2700K	3000K	3500K	4000K	WATTS
BL700	850 lm	875 lm	900 lm	950 lm	23W

For higher lumen packages, please consult the Lumux sales team.

**Housing:** Heavy-duty construction of corrosion resistant, low copper diecast aluminum. All fasteners are vandal resistant stainless-steel.

**Lens:** Sealed one-piece, shatter-proof, UV-rated polycarbonate.

**Gasket:** Closed-cell silicone foam gasket seals out moisture, dust, and insects, for weather-tight operation. IP65 and ETL listed for wet locations.

**Mounting:** Secure with galvanized anchor bolts to contractor installed concrete footing.

**Installation:** Please refer to installation instructions.

**Finish:** Zinc polyester powder coat finish in black, white, silver, bronze, or any custom RAL color. Consult factory for marine grade or anti-microbial finish.

**Light Engine:** Constant Current driver powering high quality LEDs, with optional 0-10v dimming.

**Integral Battery Pack:** Optional 10W IBP integral emergency battery pack provides 1,000 lumens with a 90 minute battery life.

### Dimensions

Content of specification sheet subject to change

# LUMUX

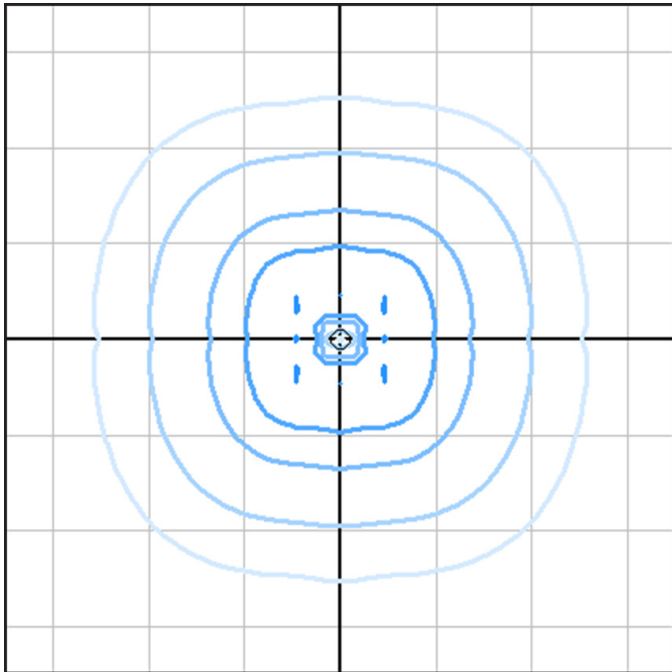
## BOLLARD

### BL700

Photometry	IESNA: LM-63-2002
TEST: 11062757.002	TEST LAB: UL Verification Svcs.
LUMINAIRE: BL700	DATE: 2015-12-03
IES Classification: n/a	Longitudinal Class: n/a
Luminaire Lumens	967
Luminaire Efficacy Rating (LER)	43
Total Luminaire Watts	22.553
Upward Waste Light Ratio	0.61
Max. Candela	115 (45H, 125V)
Max. Cd. < 90° Vertical	98.2 (45H, 87.5V)
Max. Cd. (At 90 Deg. Vert.)	98.5 (10.2% Luminaire)
Max. Cd. (80 to <90 Deg. Vert.)	98.2 (10.2% Luminaire)
Cutoff Classification: n/a	BUG Rating: B0-U3-G1

Technical aspects may change without notice.

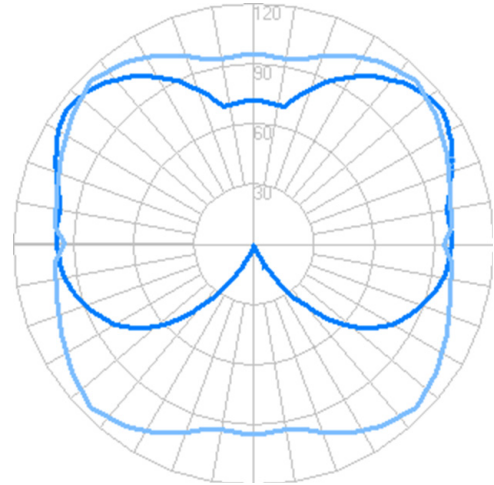
#### Iso-illuminance: Ground Plane, MH 3' off-ground



Foot-candles: 0.1, 0.2, 0.5, 1, 2, 5, 10 | Grid spacing 5'

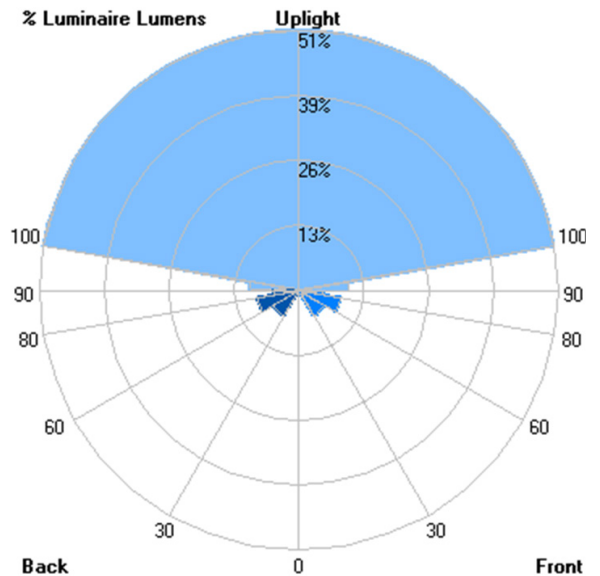
Sample isoilluminance plots. For precise values, use Lumux IES file with photometry software and correct surface reflectances.

#### Candela



#### Zonal Lumens

LCS	Zone	Lumens	%Lum.
FL	(0-30)	3.2	0.3
FM	(30-60)	56.8	5.9
FH	(60-80)	80.7	8.3
FVH	(80-90)	47.0	4.9
BL	(0-30)	3.2	0.3
BM	(30-60)	56.8	5.9
BH	(60-80)	80.7	8.3
BVH	(80-90)	47.0	4.9
UL	(90-100)	94.8	9.8
UH	(100-180)	496.8	51.4
Total		967	100



Content of specification sheet subject to change

# LUMUX

---

## LUMINAIRES IN THE COLLECTION

### BOLLARDS



BL700



BL700S



WS-BL700