



# INREACH® MESSENGER

COMPANION SATELLITE COMMUNICATOR

**OVERVIEW | FEATURES | COMPARISON |  
SPECIFICATIONS | APP**



## PRODUCT OVERVIEW:

With the inReach Messenger satellite communicator, home is closer than you think. Providing global two-way messaging and interactive SOS (active satellite subscription required), it keeps you connected with friends and family even when you're out of cell coverage. Use the device to check in with contacts, read and reply to their responses with QuickText messages and even share your GPS location data if you like. More detailed texting and group messaging is easy when using the Garmin Messenger app. Seamless switching between Wi-Fi® wireless networking, cellular and satellite networks, gives you the best connectivity and cost-efficiency for all your communications. The on device display gives you the added confidence of knowing that your message has been sent. You'll even see a response that help is on the way in case of an emergency. The communicator's internal, rechargeable lithium battery gives up to 28 days of battery life — and provides safety charging to help recover a depleted phone.

COMPACT, RUGGED DESIGN	Don't let the 4" x 2" size and 100g weight fool you. inReach Messenger is tough, durable, impact-resistant and water-rated to IPX7.
TWO-WAY MESSAGING	A simple user interface through Garmin Messenger app on your smartphone makes it easy to exchange text messages with loved one via satellite or mobile phone networks.
GARMIN MESSENGER APP	Send two-way messages globally, even when you're out of mobile phone coverage. The app supports seamless switching between Wi-Fi® wireless networking links, broadband cellular and the Iridium® satellite network.
GROUP MESSAGING	With the Garmin Messenger app, your inReach connection supports group message threading and distribution. So, you can share your adventures with multiple contacts simultaneously — and have group text chats with friends and family.
CHECK-IN MESSAGES	Check in with contacts directly from inReach Messenger by using the device's pre-set QuickText messages.
TRACBACK ROUTING	For your safety, this device records a point every 10 minutes. TracBack takes you back along the path you travelled or in a straight line to a last know point of your choice.
ON-DEVICE DISPLAY	The inReach Messenger's high-end memory-in-pixel screen technology gives you the added confidence of knowing that your message has been sent — and seeing a response that help is on the way in case of an emergency.
SEAMLESS CONNECTION	Optimized inReach messaging uses a cellular connection of your compatible smartphone when it's available, then it seamlessly switches to a 100% global Iridium satellite link when you go beyond available cellular coverage range.
INREACH WEATHER	Get detailed weather updates on inReach Messenger or a paired compatible device. You can even request forecasts for your current location or other waypoints or destinations on your itinerary.
BATTERY LIFE	Internal, rechargeable lithium battery gives up to 28 days of battery life.
SAFETY CHARGING	Need a backup option in case your compatible smartphone battery dies? Connect inReach Messenger to your phone for enough safety charge to send a custom text message from the inReach Messenger device via your phone's touchscreen.
INTERACTIVE SOS ALERTS	Trigger an interactive SOS to the Garmin IERCC 24/7-staffed monitoring and coordination centre for help in an emergency (satellite subscription required).
LOCATION SHARING	Share your location with loved ones back home at any time using your MapShare™ page or with your coordinates embedded in your messages.



## inReach Messenger



**DIMENSIONS**  
7.8 x 6.4 x 2.3 cm

**WEIGHT**  
4 oz (113.9 g)

**BATTERY LIFE**  
Up to 28 days with a message or location sent every 10 minutes,  
Up to 46 days with a message or location sent every 30 minutes

**WATER RATING**  
IPX7

**SOS & TWO-WAY MESSAGING**

**LOCATION SHARING**

**TRACBACK FEATURE**

## inReach Mini 2



**DIMENSIONS**  
5.17 x 9.90 x 2.61 cm

**WEIGHT**  
3.5 oz (100.0 g)

**BATTERY LIFE**  
Up to 14 days at 10-minute tracking (default)  
Up to 30 days at 30-minute tracking

**WATER RATING**  
IPX7

**SOS & TWO-WAY MESSAGING**

**LOCATION SHARING**

**TRACBACK FEATURE**

**GARMIN EXPLORE MOBILE APP COMPATIBLE**

**SEND WAYPOINTS AND ROUTE SELECTION TO MAPSHARE DURING TRIP**

**BREADCRUMB MAP**

## GPSMAP 66i



**DIMENSIONS**  
6.2 x 16.3 x 3.5 cm

**WEIGHT**  
8.1 oz (230.0 g)

**BATTERY LIFE**  
Up to 35 hours at 10-minute tracking  
Up to 200 hours at the 30-minute tracking

**WATER RATING**  
IPX7

**SOS & TWO-WAY MESSAGING**

**LOCATION SHARING**

**TRACBACK FEATURE**

**GARMIN EXPLORE MOBILE APP COMPATIBLE**

**SEND WAYPOINTS AND ROUTE SELECTION TO MAPSHARE DURING TRIP**

**BREADCRUMB MAP**

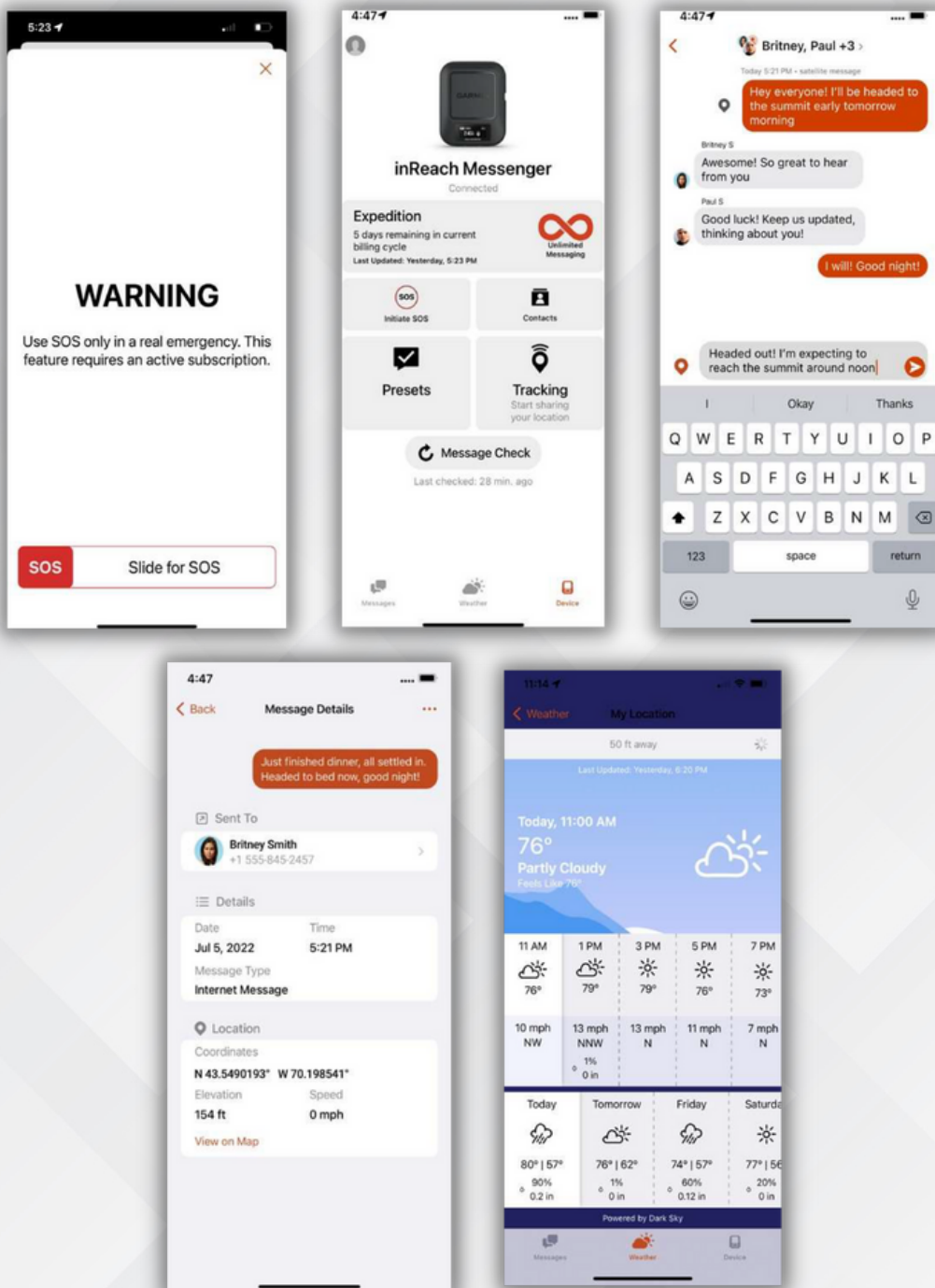
**INCLUDES WORLDWIDE MAP**

**PRELOADED TOPO ACTIVE EUROPE MAP**

<b>UNIT DIMENSIONS</b>	3.1" x 2.5" x 0.9" ( 7.8 x 6.4 x 2.3 cm)
<b>DISPLAY SIZE, RESOLUTION, TYPE</b>	1" x 0.43", 1.08" diagonal (2.53 x 1.1 cm 2.74 cm diagonal) 160 x 68 pixels Sunlight-readable, monochrome, transfective memory-in-pixel (MIP)
<b>WEIGHT</b>	4 oz (113.9 g)
<b>BATTERY TYPE</b>	Rechargeable internal lithium-ion
<b>BATTERY LIFE</b>	Up to 28 days with a message or location sent every 10 minutes with full sky view; Up to 14 days with moderate tree cover Up to 6 days with a message or location sent every 2 minutes with full sky view; Up to 3 days with moderate tree cover Up to 46 days with a message or location sent every 30 minutes with full sky view; Up to 23 days with moderate tree cover
<b>WATER RATING</b>	IPX7
<b>HIGH-SENSITIVITY RECEIVER</b>	Yes
<b>INTERFACE</b>	USB-C
<b>WIRELESS CONNECTIVITY</b>	BLUETOOTH® Low Energy (LE), ANT+® technologies
<b>MULTI-GNSS</b>	GPS, Galileo, QZSS, Beidou
<b>COMPASS</b>	GPS Compass (while moving)



Never lose touch with friends and family. The Garmin Messenger app brings rich network messaging features to any compatible smartphone. And when paired with your compatible inReach device<sup>1</sup>, it lets you enjoy the security and connectivity of global satellite messaging and interactive SOS that's not limited to mobile phone coverage areas (active satellite subscription required). The app supports group message threading and distribution as well as direct communication with other users. Automatic switching between Wi-Fi® wireless networking links, broadband cellular and the global Iridium® satellite network gives you the best connectivity and efficiency for all your messaging. When you have connectivity, the app on your phone will work seamlessly even if your inReach device is turned off.





[www.gtc.co.uk](http://www.gtc.co.uk)