



FastFind CREW1 AIS Man Overboard Beacon

The FastFind CREW1 is an AIS Man Overboard Device with a range of features designed to accelerate detection and support localised rescue for vessel crew in an MOB situation.

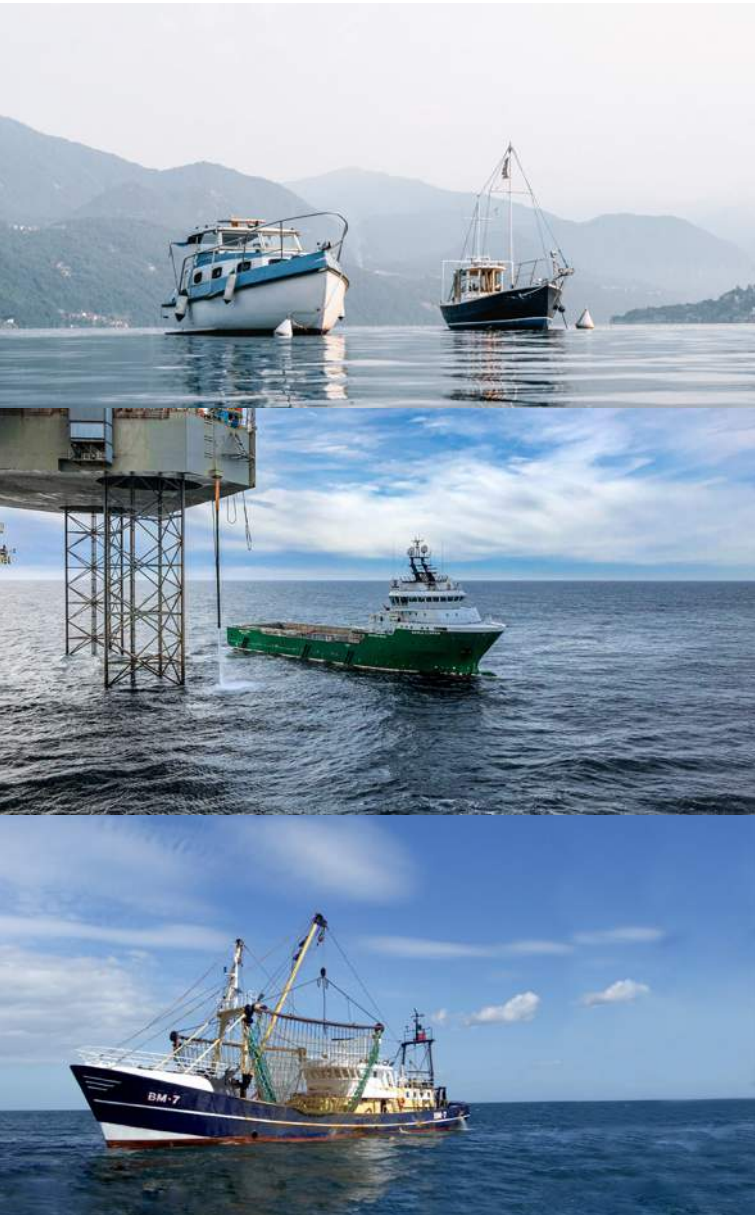


FastFind CREW1

To celebrate the 20th anniversary of the FastFind brand, a brand synonymous with life-saving Personal Locator Beacon (PLB) solutions, Seas of Solutions are delighted to announce the FastFind CREW1 AIS MOB will join the RLS enabled FastFind Return Link PLB in our portfolio of marine electronics. The new CREW1 provides the quality and innovation you would expect from a FastFind beacon and is designed to improve the survivability of those working or playing on the water.

The FastFind CREW1 AIS Man Overboard device is designed to accelerate detection and support localised rescue for vessel crew in an MOB situation.

The CREW1 offers a range of innovative features in a compact and easy to carry design. The semi-automatic beacon can be water or manually activated. It boasts an extended 36 hour battery life and high-powered SOS strobe capability. With a rugged construction and multiple attachment clippings, the FastFind CREW1 is designed with crew survivability in mind. Submersible to 50m, the Crew1 offers a versatile commercial grade AIS man over-board solution.



Features

- Compact and offers dynamic lifejacket fitting options
- Highly accurate, regularly updated GPS coordinates to accelerate location detection
- Water and manual activation options
- Compatible with AIS electronics, e.g. chart plotters
- High strength LED signals SOS message to aid low light detection
- High powered battery allows extended signal operation with 36 hrs activation time (typical for -10C)
- 5 years storage life
- IP68 Waterproof with 50m immersion depth.



How FastFind CREW1 works

- CREW1 is activated in an emergency crew recovery situation
- An alert message is transmitted to all AIS receivers and AIS enabled chart plotters within a 4 mile radius (typical)
- An AIS SART alert icon (pictured) marks the survivors location
- Precise target survivor information including GPS position become viewable when the chart plotter* cursor is positioned over the icon
- Provides exact location, distance and bearing to locate person (s) in need of assistance

Not all small-craft chart plotters with AIS show the correct icon ☒ as recommended by the IMO. At the very least, they will show the same icon as used for other craft – normally an arrow. In addition, user settings generally allow you to configure the display to show the TX ID number, which in the Crew1 always begins with 972. This way you can differentiate the CREW1 from other vessels.

All new ECDIS plotters (on ships over 300 tonnes) should display the icon ☒ correctly.

* For use with AIS enabled plotters, contact your plotter manufacturer for further info.

Installation and activation

The FastFind CREW1 is supplied, as default, with a clip to attach the device to lifejacket strap and an alternative clip which can be attached to the lifejacket's oral tube. This clip can be installed on either side of the oral tube.

Activation can be either manually or by water sensor activation. **Manual activation** involves pulling off the red antenna cap to release the antenna and then pulling the activation tab off. The device will start transmitting alert messages immediately. **Water sensor activation** requires you to pull off the red antenna cap to release the antenna, when the water sensor embedded at the bottom side of the device is immersed in water for more than 3 seconds, the device will be activated and starts transmission.

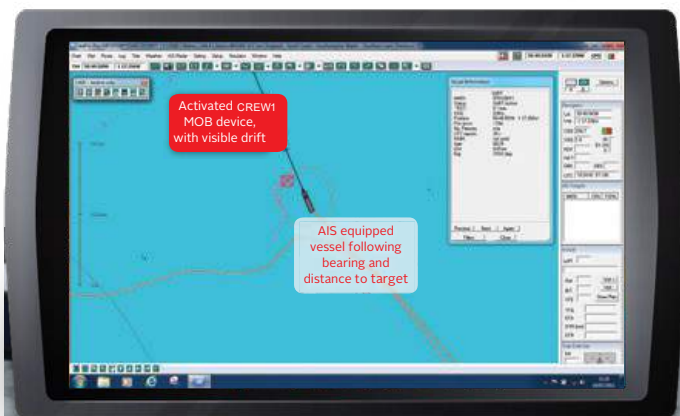


Image shown is Euronav Software

FastFind CREW1 Specifications

APPLICABLE STANDARDS

IEC 60945, IEC 61108-1, EN 50383: 2010,
EN 62368-1: 2014 + A11: 2017, EN 303098 V2.2.1,
IEN 50385: 2002, EN 62311: 2008

VHF PERFORMANCE

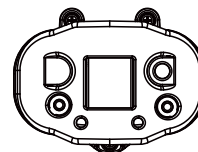
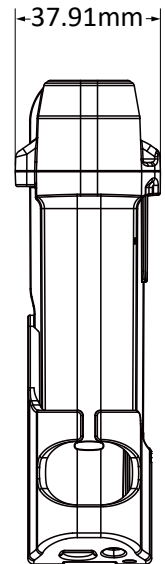
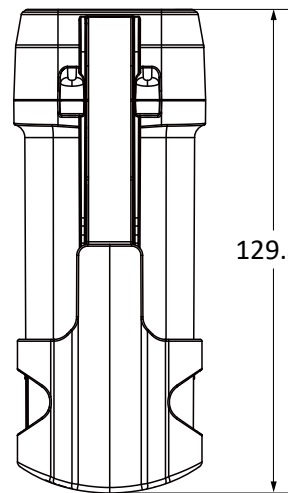
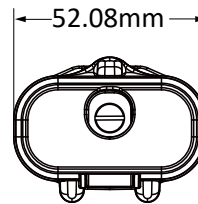
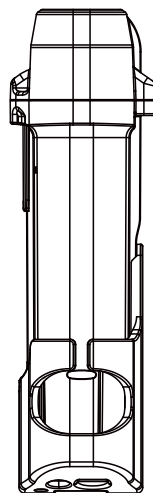
Frequency	AIS 1, 161.975MHz AIS 2, 162.025 MHz
Data Rate	9,600bps
Tx Power	2W (1W EIRP)
Bandwidth	25 KHz
Modulation	GMSK
Range	4nm typical with receiver antenna > 5m above sea level
AIS Message Type	Message 1 (TXID, GPS position, SOG, COG) Message 14 (MOB ACTIVE or MOB TEST)

GPS RECEIVER

Receiving Channels	72
Frequency	L1, 1575.42 MHz
Tracking Sensitivity	(-)159 dBm
Reacquisition	(-)163 dBm
Position Update	Every minute
Position Accuracy	< 2.0 m SBAS < 2.5 m Autonomous

ACTIVATION METHOD

Manual activating or automatic activating with water sensor by immersion



LED INDICATION

Battery (green/red)
GPS Positioning (green/red)

BATTERY

Type	Primary Lithium (not rechargeable)
Operating Time	36 hours at -10°C, typical
Storage (battery life)	5 years, replacement due after emergency use

ENVIRONMENTAL

Operating Temperature	-20°C~55°C
Storage Temperature	-30°C~70°C
Waterproof	IP68
Immersion depth (optional)	50m
Compass Safe Distance	0.8m

PHYSICAL

Size	129x52x40mm (L*W*D)
Weight	160 g (main unit only)

ITEMS SUPPLIED

Main MOB unit with webbing belt clip	x 1
Clip on carrying pouch	x 1
User guide	x 1
Oral tube clip for lifejacket	x 1
Unit Self-test activation tab	x 1