



High Hippy

3-29-24

Sample 623-032524-081

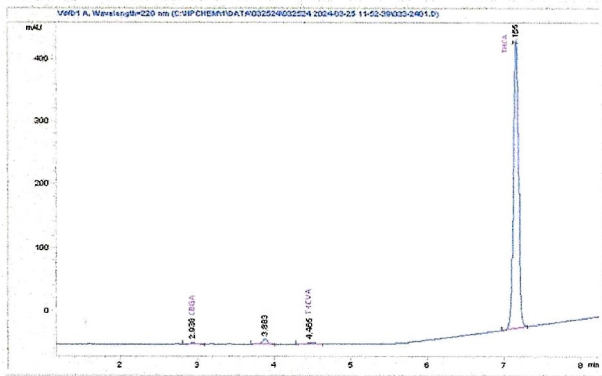
Slurrricane LR

Sample Submitted: 03-25-2024; Report Date: 03-26-2024

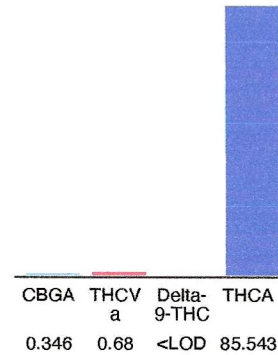
Slurrricane LR

Extract / Concentrate

Chromatogram



Cannabinoid Profile



Cannabinoid Profile by HPLC

0.00%
Delta-9-THC

0.00%
CBD

86.57%
Total Cannabinoids

| Cannabinoid | % wt | mg/g |
|-----------------------------|--------------|---------------|
| CBGA | 0.346 | 3.46 |
| THCVa | 0.68 | 6.8 |
| Delta-9-THC | <LOD | <LOD |
| THCA | 85.54 | 855.43 |
| Total Cannabinoids | 86.57 | 865.7 |
| Calculated Total THC | 75.02 | 750.21 |
| Calculated CBD Yield | 0.00 | 0.00 |

Calculated Total THC = Delta-9-THC + 0.877 * THCA
Calculated Maximum CBD Yield = CBD + 0.877 * CBDA

Notes: Delta-9-THC Limit of Detection (LOD): 0.001%

Marin Analytics, LLC
250 Bel Marin Keys Blvd, Suite D4
Novato, CA 94949

833-321-TEST / info@marinanalytics.com

Mike Clemmons
Lab Manager



High Hippy

3-29-24

Sample 623-032524-080

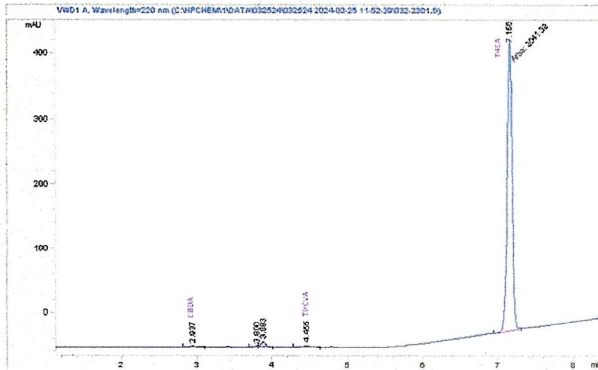
OG 18 LR

Sample Submitted: 03-25-2024; Report Date: 03-26-2024

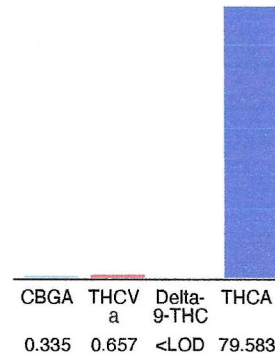
OG 18 LR

Extract / Concentrate

Chromatogram



Cannabinoid Profile



Cannabinoid Profile by HPLC

0.00%
Delta-9-THC

0.00%
CBD

80.58%
Total Cannabinoids

| Cannabinoid | % wt | mg/g |
|-----------------------------|--------------|---------------|
| CBGA | 0.335 | 3.35 |
| THCVa | 0.657 | 6.57 |
| Delta-9-THC | <LOD | <LOD |
| THCA | 79.58 | 795.83 |
| Total Cannabinoids | 80.58 | 805.8 |
| Calculated Total THC | 69.79 | 697.94 |
| Calculated CBD Yield | 0.00 | 0.00 |

Calculated Total THC = Delta-9-THC + 0.877 * THCA
Calculated Maximum CBD Yield = CBD + 0.877 * CBDA

Notes: Delta-9-THC Limit of Detection (LOD): 0.001%

Marin Analytics, LLC

250 Bel Marin Keys Blvd, Suite D4
Novato, CA 94949

833-321-TEST / info@marinanalytics.com

Mike Clemmons
Lab Manager

High Hippy 3-29-24

Sample 623-032524-077

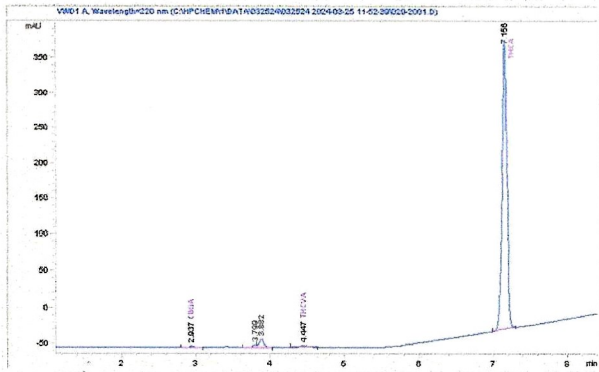
Ice Cream Cake LR

Sample Submitted: 03-25-2024; Report Date: 03-26-2024

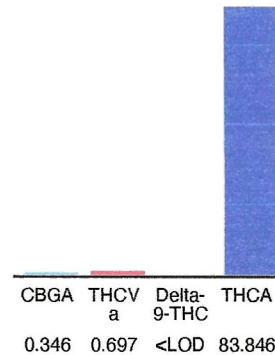
Ice Cream Cake LR

Extract / Concentrate

Chromatogram



Cannabinoid Profile



Cannabinoid Profile by HPLC

0.00%
Delta-9-THC

0.00%
CBD

84.89%
Total Cannabinoids

| Cannabinoid | % wt | mg/g |
|-----------------------------|--------------|---------------|
| CBGA | 0.346 | 3.46 |
| THCVa | 0.697 | 6.97 |
| Delta-9-THC | <LOD | <LOD |
| THCA | 83.85 | 838.46 |
| Total Cannabinoids | 84.89 | 848.9 |
| Calculated Total THC | 73.53 | 735.33 |
| Calculated CBD Yield | 0.00 | 0.00 |

Calculated Total THC = Delta-9-THC + 0.877 * THCA
 Calculated Maximum CBD Yield = CBD + 0.877 * CBDA

Notes: Delta-9-THC Limit of Detection (LOD): 0.001%

Marin Analytics, LLC
 250 Bel Marin Keys Blvd, Suite D4
 Novato, CA 94949
 833-321-TEST / info@marinanalytics.com

Mike Clemmons
 Lab Manager

This sample has been tested by Marin Analytics, LLC using valid testing methodologies and a quality system. Values reported relate only to the sample tested. Marin Analytics, LLC makes no claims as to the efficacy, safety, or other risks associated with any detected or non-detected levels of any compounds reported herein. This Certificate shall not be reproduced except in full without the written approval of Marin Analytics, LLC. Copyright 2023 Marin Analytics, LLC All Rights Reserved.



High Hippy

3-29-24

Sample 623-032524-079

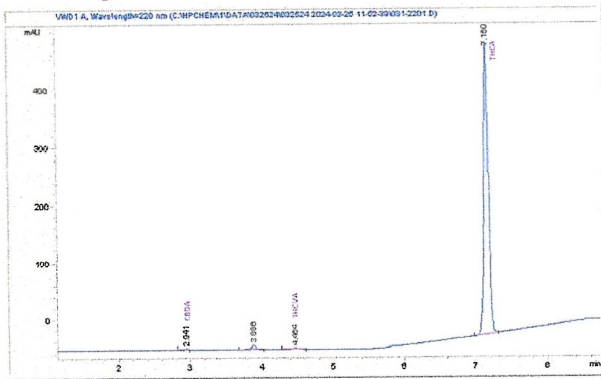
SFV LR

Sample Submitted: 03-25-2024; Report Date: 03-26-2024

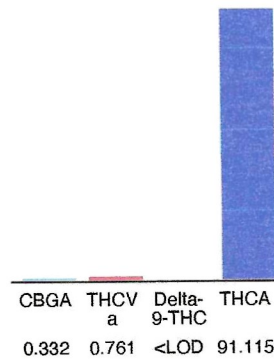
SFV LR

Extract / Concentrate

Chromatogram



Cannabinoid Profile



Cannabinoid Profile by HPLC

0.00%
Delta-9-THC

0.00%
CBD

92.21%
Total Cannabinoids

| Cannabinoid | % wt | mg/g |
|-----------------------------|--------------|---------------|
| CBGA | 0.332 | 3.32 |
| THCVa | 0.761 | 7.61 |
| Delta-9-THC | <LOD | <LOD |
| THCA | 91.12 | 911.15 |
| Total Cannabinoids | 92.21 | 922.1 |
| Calculated Total THC | 79.91 | 799.08 |
| Calculated CBD Yield | 0.00 | 0.00 |

Calculated Total THC = Delta-9-THC + 0.877 * THCA
Calculated Maximum CBD Yield = CBD + 0.877 * CBDA

Notes: Delta-9-THC Limit of Detection (LOD): 0.001%

Marin Analytics, LLC
250 Bel Marin Keys Blvd, Suite D4
Novato, CA 94949

833-321-TEST / info@marinanalytics.com

Mike Clemmons
Lab Manager

This sample has been tested by Marin Analytics, LLC using valid testing methodologies and a quality system. Values reported relate only to the sample tested. Marin Analytics, LLC makes no claims as to the efficacy, safety, or other risks associated with any detected or non-detected levels of any compounds reported herein. This Certificate shall not be reproduced except in full without the written approval of Marin Analytics, LLC. Copyright 2023 Marin Analytics, LLC All Rights Reserved.