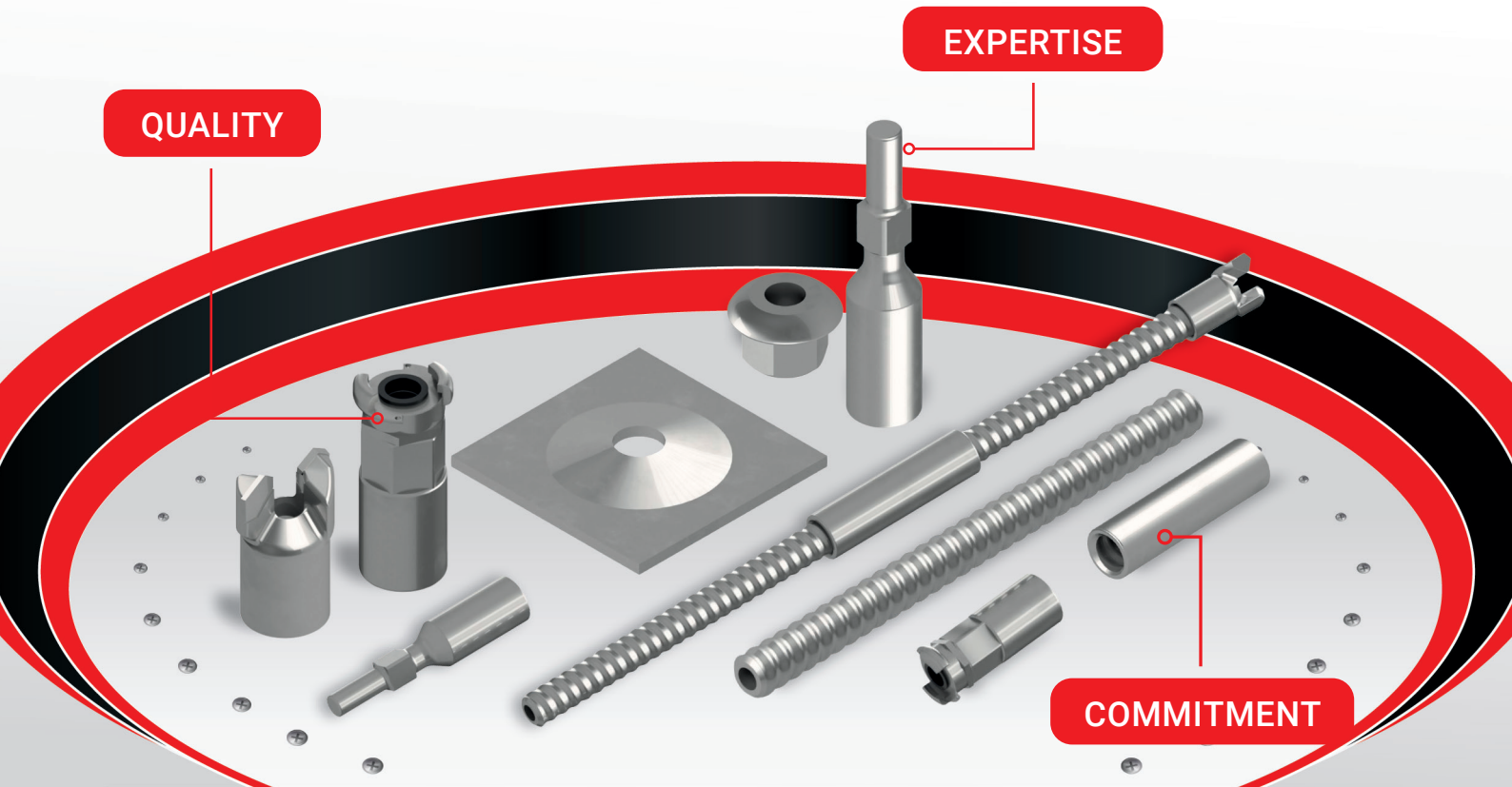


QUARRY MINING

& CONSTRUCTION EQUIPMENT PTY LTD

EXPERTISE

QUALITY



COMMITMENT

SELF-DRILLING ANCHOR BOLT



EXPERTISE YOU CAN DEPEND ON

WWW.QUARRYMINING.COM

GENERAL INFORMATION

EXPERTISE. QUALITY. COMMITMENT.

QUARRY MINING has been setting the industry standard for almost 40 years in the design and manufacture of quality, custom made drilling consumables.

Over that time we have grown to become a preferred supplier to some of the biggest names in the Australian Mining, Construction and Tunnelling industries as well as exporting our equipment into Asia, South America and New Zealand.

We manufacture a wide range of products to meet all your hard rock and soft rock drilling challenges. Our products are made using the latest technology and the highest quality materials available, including Tungsten Carbide, Poly Crystalline Diamond and high grade steels to ensure you get the best results across a range of drilling conditions.

We work together with you to ensure you always get the exact part needed to get the job done efficiently and cost effectively. Our technical team is available to go on site and customise drilling equipment to meet the specific requirements of the job, to maximise the productivity and the cost effectiveness of your project.

UNDERGROUND MINING



TUNNELLING

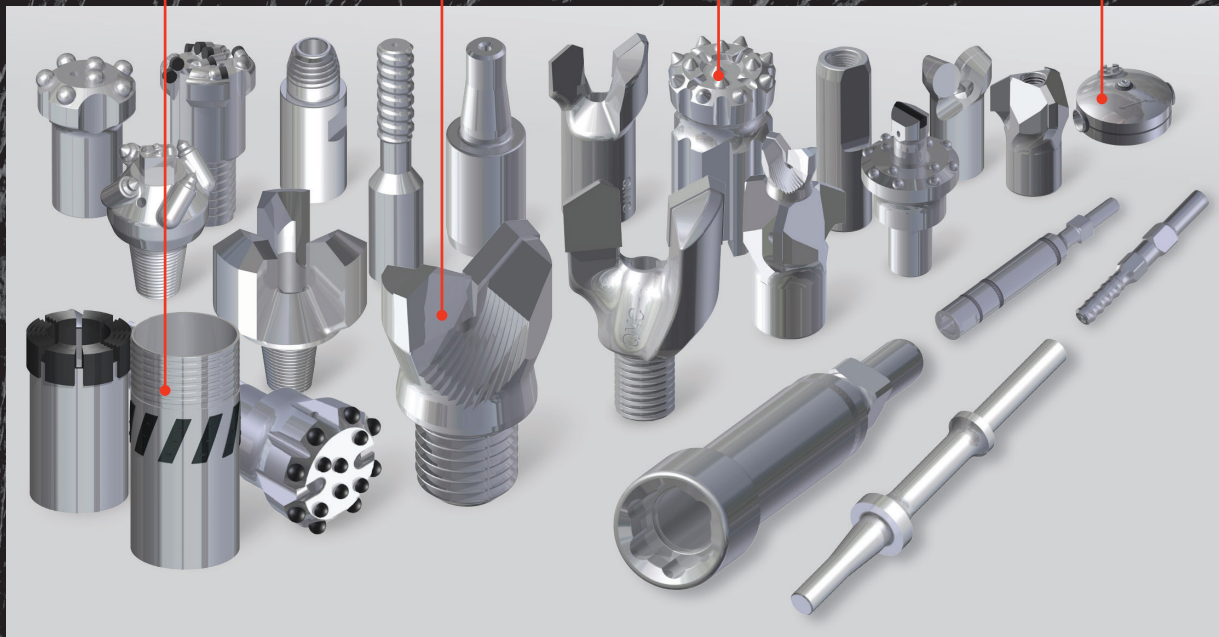
CIVIL INFRASTRUCTURE

CORING

**TOP HAMMER
(HARD ROCK)**

**ROTARY
(SOFT ROCK)**

**INDUSTRIAL
ACCESSORIES**



NEW SOUTH WALES

9/14 Yangan Drive,
 Beresfield NSW 2322

ph: +61 (0)2 4966 5028

e: orders@quarrymining.com

QUEENSLAND

5/35 Iridium Drive,
 Mackay QLD 4740

ph: +61 (0)7 4998 5295

e: ordersqld@quarrymining.com

Distribution Warehouse - Sydney

Unit 1, No.1 Bearing Road,
 Seven Hills NSW 2147

ph: 0499 707 553

e: orders@quarrymining.com



QMS Certification Services

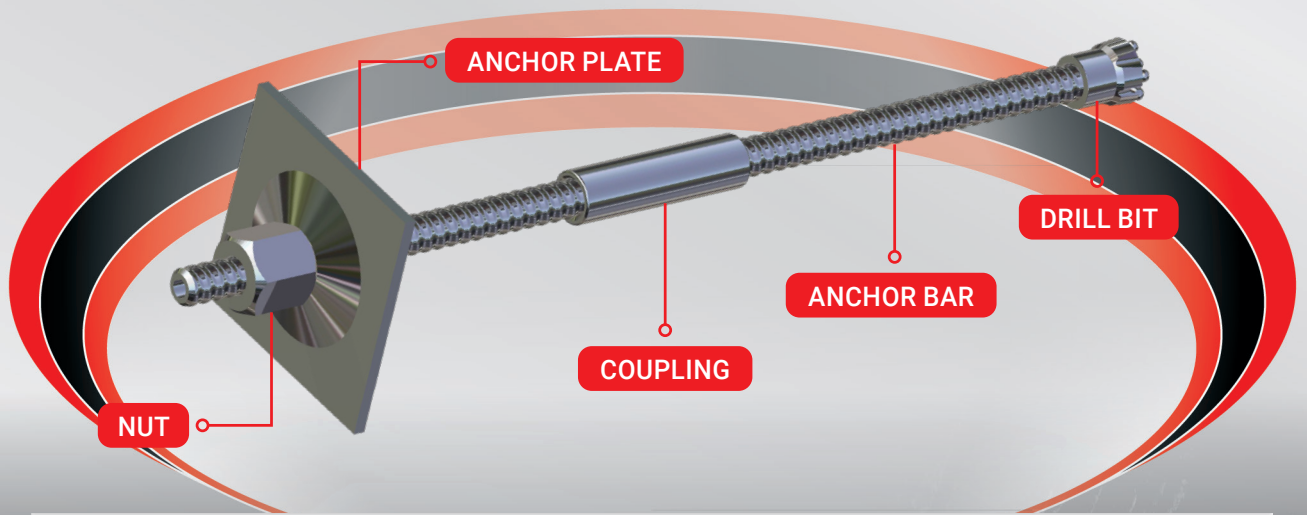


QMS Certification Services



QMS Certification Services

EXPERTISE YOU CAN DEPEND ON



LEFT-HAND ROTARY PERCUSSIVE

APPLICATIONS

Bolting solution for unstable ground conditions:

- Slope stabilisation
- Fractured ground consolidation
- Spiling – underground mining
- Micropiling

Hollow bore for simultaneous drilling and grouting.

OPTIONS

Thermal Diffusion Galvanising (TDG)

- Duplex Coat System = Hot dipped galvanised plus epoxy powder coating



EXX



EC



EY



ESS-F



ESS-D

ANCHOR BAR

Size	Outer (mm)	Inner (mm)	Ultimate Load (KN)	Yield Load (KN)	Weight (kg/m)
R25N	25	12	200	150	2.3

COUPLING

Size	Length (mm)	Outer (mm)	Weight (kg)
R25N	150	36	0.68

DRILL BIT

Size	Type	Description	Outer Dia. (mm)	Thread Type	Hardness
R25N	X	Forged cross-cut drill bit	42/51	ISO 10208	TC-inserts bit: HRA85-90
R25N	EX	Hardened Cross-cut drill bit	42/51		
R25N	EXX	Tungsten carbide chisel drill bit	42/51		Hardened steel bits: HRC50-55
R25N	ES	Hardened button drill bit	42/51		
R25N	ESS	Tungsten carbide button drill bit	42/51		

NUT

Size	Key size (mm)	Length (mm)	Weight (kg)
R25N	41	35	0.25

ANCHOR PLATE

Size	Dimensions (mm)	Thickness (mm)	Hole Dia. (mm)	Weight (kg)
R25N	150 x 150	8	27	1.4
R25N	200 x 200	10	32	3.1

ANCHOR BAR

Size	Outer (mm)	Inner (mm)	Ultimate Load (kN)	Yield Load (kN)	Weight (kg/m)
R32N/1	32	20.5	280	230	2.9
R32S	32	17.0	360	280	3.5
R32S/1	32	18.0	360	280	3.5

COUPLING

Size	Length (mm)	Outer (mm)	Weight (kg)
R32L	145	42	0.8
R32N	160	42	0.85
R32S	190	42	1

DRILL BIT

Size	Type	Description	Outer Dia. (mm)	Thread Type	Hardness
R32	X	Forged cross-cut drill bit	51	ISO 10208	TC-insert bit: HRA85-90
R32	EX	Hardened cross-cut drill bit	51/76/90		
R32	EXX	Tungsten carbide cross-cut drill bit	51		Hardened steel bit: HRC50-55
R32	EY	Hardened tri-crescent drill bit	76		
R32	EYY	Tungsten tri-crescent drill bit	51		
R32	EC	Hardened tri-crescent drill bit	51		Clay bit: HRC45-50
R32	ECC	Tungsten carbide tri-crescent drill bit	51		
R32	ES-F	Hardened button drill bit	51		
R32	ESS-F	Tungsten carbide button drill bit	51		
R32	Clay bit	Clay bit	76/90/110		
R32	Clay bit	with R38 adaptor	130		

NUT

Size	Key size (mm)	Length (mm)	Weight (kg)
R32 Dome	46	45	0.35

ANCHOR PLATE

Size	Dimensions (mm)	Thickness (mm)	Hole Dia. (mm)	Weight (kg)
R32 Dome	200 x 200	10	35	3.1

SPACER - CENTRALISER

Size	Outer Dia. (mm)	Length (mm)	Weight (kg)
R32	72	30	0.3

ADAPTER

Size	Length (mm)	Weight (kg)
R32-R38	50	0.13

ANCHOR BAR

Size	Outer (mm)	Inner (mm)	Ultimate Load (KN)	Yield Load (KN)	Weight (kg/m)
R38N	38	22	500	400	6

COUPLING

Size	Length (mm)	Outer (mm)	Weight (kg)
R38	220	51	1.7

DRILL BIT

Size	Type	Description	Outer Dia. (mm)	Thread Type	Hardness
R38	XX	Two stage cross-cut drill bit	110	ISO 10208	TC-insert bit: HRA85-90
R38	EX	Hardened cross-cut drill bit	76/90		
R38	EXX	Tungsten carbide cross-cut drill bit	90		Hardened steel bit: HRC50-55
R38	EY	Hardened tri-crescent drill bit	76/90		
R38	EYY	Tungsten tri-crescent drill bit	76/90		Clay bit: HRC45-50
R38	ES	Hardened button drill bit	76/115		
R38	ESS	Tungsten carbide button drill bit	76/115		
R38	Clay bit	Stepped clay bit	90/110/130		
R38	Clay bit	With R51 adaptor	150/175		

NUT

Size	Key size (mm)	Length (mm)	Weight (kg)
R38	50	60	0.4
R38 Dome		60	0.7

ANCHOR PLATE

Size	Dimensions (mm)	Thickness (mm)	Hole Dia. (mm)	Weight (kg)
R38 Dome	200 x 200	12	41	3.6

SPACER - CENTRALISER

Size	Outer Dia. (mm)	Length (mm)	Weight (kg)
R38	78	30	0.3

ADAPTER

Size	Length (mm)	Weight (kg)
R32-R51	68	0.41

ANCHOR BAR

Size	Outer (mm)	Inner (mm)	Ultimate Load (KN)	Yield Load (KN)	Weight (kg/m)
R51N	51	31	800	630	8.2

COUPLING

Size	Length (mm)	Outer (mm)	Weight (kg)
R51	220	63	2.13

DRILL BIT

Size	Type	Description	Outer Dia. (mm)	Thread Type	Hardness
R51	XX	Two stage cross-cut drill bit	110	ISO 1720	TC-insert bit: HRA85-90
R51	EXX	Tungsten carbide cross bit	76/90/110/130		
R51	ES	Hardened button drill bit	100/115		
R51	ESS	Tungsten carbide button drill bit	100/115		
R51	Clay bit	Stepped clay bit	76/90/150/175		Clay bit: HRC45-50

NUT

Size	Key size (mm)	Length (mm)	Weight (kg)
R51	75	70	1.55

ANCHOR PLATE

Size	Dimensions (mm)	Thickness (mm)	Hole Dia. (mm)	Weight (kg)
R51	250 x 250	40	60	18.5

SPACER - CENTRALISER

Size	Outer Dia. (mm)	Length (mm)	Weight (kg)
R51	91	30	0.3

ANCHOR BAR

Size	Outer (mm)	Inner (mm)	Ultimate Load (KN)	Yield Load (KN)	Weight (kg/m)
T76N	76	51	1600	1200	16.5
T76S	76	45	1900	1500	19.7
T111L	110	85	2640	2000	25
T111N	110	75	3650	2750	34.5

COUPLING

Size	Length (mm)	Outer (mm)	Weight (kg)
T76	220	95	6.4
T111	250	140	11.5

DRILL BIT

Size	Type	Description	Outer Dia. (mm)	Thread Type	Hardness
T76	XX	Two stage cross-cut drill bit	130/145/175/200	Int. Standard	TC-insert bit: HRA85-90
T76	ESS	Tungsten carbide button drill bit	120		
T76	EY	Hardened tri-crescent drill bit	130		Hardened steel bit: HRC50-55
T76	EYY	Tungsten tri-crescent drill bit	130		
T76	Clay bit	Stepped clay bit	130/150/175/200		
T111	EX	Hardened cross-cut drill bit	220		Clay bit: HRC45-50
T111	ESS	Tungsten carbide button drill bit	170		
T111	Clay bit	Stepped clay bit	220		

NUT

Size	Key size (mm)	Length (mm)	Weight (kg)
T76	100	80	3.6
T111	150	120	9

ANCHOR PLATE

Size	Dimensions (mm)	Thickness (mm)	Hole Dia. (mm)	Weight (kg)
T76	250 x 250	60	80	27
T111	300 x 300	80	130	47.8
T111	350 x 350	90	130	76.8

SPACER

Size	Outer Dia. (mm)	Length (mm)	Weight (kg)
T76	130	40	1
T111	170	50	1.8

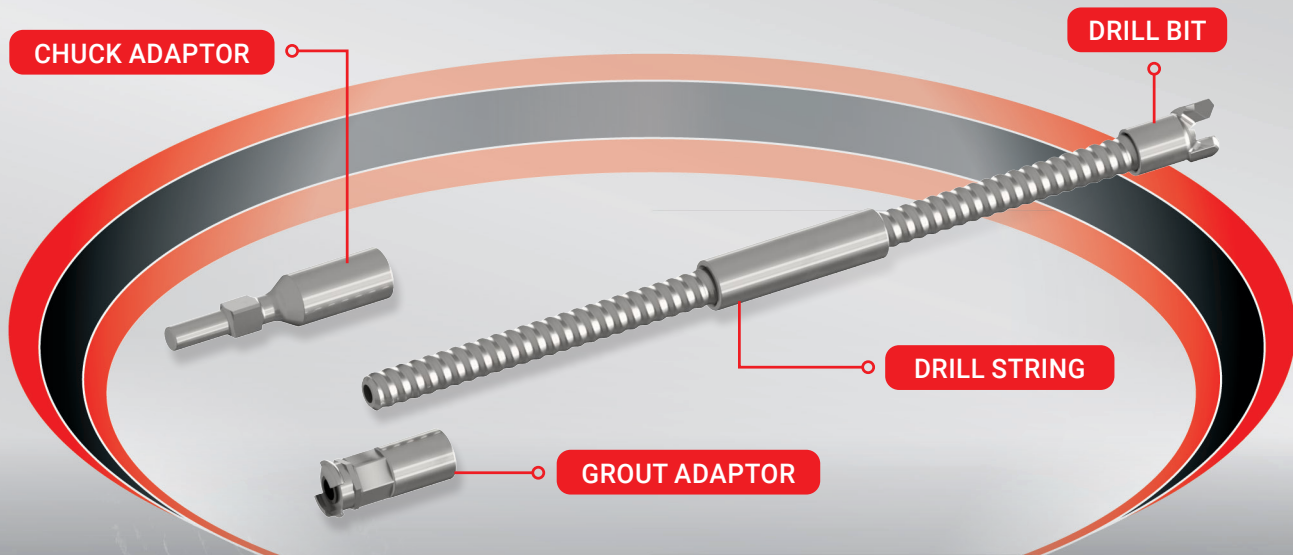
STANDARDS

Technical Data	T25 N	T32 L	R32 N	R32 S	R38 N	R51 L	R51 N	T76 N	T76 S	T111 L	T111 N
Thread Standard	ISO 10208				ISO 1702			Int. Standard			
Thread	Left or Right										
Steel Grade	Acc to EN 10083-1										
Delivery Length	1-6m										

Other sizes available on request.

T-THREAD

Rod Size D / Inner (mm)	Ultimate (kN)	Yield (kN)	Effective D (mm)	Nominal D (mm)	Weight (kg/m)
30/16	220	180	26	30	2.7
30/14	260	220	26	30	2.9
32/20	291	244	28	32	3.2
30/11	320	260	26	30	3.3
40/20	539	430	36	40	5.6
40/16	660	525	36	40	7
52/26	929	730	49	52	10
73/56	1194	785	70	73	11.1
73/53	1160	970	70	73	12.3
73/45	1630	1180	70	73	17.8
73/35	1980	1355	70	73	21.2
103/78	2282	1800	100	103	24.9
103/51	3460	2750	100	103	43.4
127/111	2400	1810	100	103	23.5
130/60	7940	5250	125	130	75



SELF-DRILLING ANCHOR BOLT

RIGHT-HAND ROTARY NON-PERCUSSIVE

APPLICATIONS

Bolting solution for unstable ground conditions:

- Slope stabilisation
- Fractured ground consolidation
- Spiling – underground mining
- Micropiling

Hollow bore for simultaneous drilling and grouting.

OPTIONS

- Hot dipped galvanised according to ENI ISO 1461
- Duplex Coat System = Hot dipped galvanised plus epoxy powder coating



DB-W



CA



GA

EXPERTISE YOU CAN DEPEND ON

STEEL - SELF-DRILLING ANCHOR BOLT - R32

Self-drilling anchor bolts are also available in R25 and R38 configurations. All configurations are available in left and right hand options.

DRILL BIT

Thread	Diameter (mm)	Weight (kg)
R32F	52	0.56

Other diameters available upon request

ANCHOR BAR

Size	OD	ID	Ultimate Load	Yield Load	Weight
R32L	32mm	20.5mm	210kN	170kN	2.9kg/m
R32N	32mm	18.0mm	280kN	230kN	3.5kg/m
R32N/1	32mm	20.5mm	280kN	230kN	2.9kg/m
R32S	32mm	15.0mm	360kN	280kN	4.1kg/m
R32S/1	32mm	18.0mm	360kN	280kN	3.5kg/m

COUPLING

Size	Length (mm)	OD (mm)	Weight (kg)
R32L	145	42	0.8
R32N	160	42	0.85
R32S	190	42	1.0

DRIVE ADAPTOR

Drive	Thread	Weight (kg)
25SM	R32F	1.19

GROUT ADAPTOR

Grout Fitting	Thread	Weight (kg)
1" Type A Minsup	R32F	0.85

CUTTABLE FIBRE DOWEL - SELF-DRILLING ANCHOR BOLT - R32

Self-drilling anchor bolts are also available in R25 and R38 configurations.
All configurations are available in left and right hand options.

DRILL BIT

Thread	Diameter (mm)	Weight (kg)
R32F	52	0.56

Other diameters available upon request

ANCHOR BAR

Size	OD (mm)	ID (mm)	Ultimate Load (kN)*	Torsional Strength (Nm)	Weight (kg/m)
R32/15	32	15	350	320	1.0

Other threads available upon request

* Ultimate Load applies to bolt only.

Nuts, plates and couplers are excluded and are available on request.

COUPLING

Size	Length (mm)	OD (mm)	Weight (kg)
R32L	145	42	0.8
R32N	160	42	0.85
R32S	190	42	1.0

DRIVE ADAPTOR

Drive	Thread	Weight (kg)
25SM	R32F	1.19

GROUT ADAPTOR

Grout Fitting	Thread	Weight (kg)
1" Type A Minsup	R32F	0.85

QUARRY MINING

& CONSTRUCTION EQUIPMENT PTY LTD

New South Wales

9/14 Yangan Drive,
Beresfield NSW 2322

ph: +61 (0)2 4966 5028

e: orders@quarrymining.com

Queensland

5/35 Iridium Drive,
Paget QLD 4740

ph: +61 (0)7 4998 5295

e: ordersqld@quarrymining.com

Distribution Warehouse - Sydney

Unit 1, No.1 Bearing Road,
Seven Hills NSW 2147

ph: +61 (0) 499 707 553

e: orders@quarrymining.com



QMS Certification Services

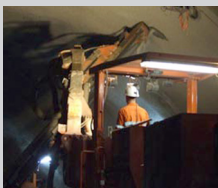


QMS Certification Services



QMS Certification Services

CAT-SDAB 01 Feb2023



EXPERTISE YOU CAN DEPEND ON

WWW.QUARRYMINING.COM