

# QUARRY MINING

**& CONSTRUCTION EQUIPMENT PTY LTD**

**QUALITY**

**EXPERTISE**

**COMMITMENT**

## INDUSTRIAL ACCESSORIES



**EXPERTISE YOU CAN DEPEND ON**

**[WWW.QUARRYMINING.COM](http://WWW.QUARRYMINING.COM)**

# GENERAL INFORMATION

## EXPERTISE. QUALITY. COMMITMENT.

**QUARRY MINING** has been setting the industry standard for almost 40 years in the design and manufacture of quality, custom made drilling consumables.

Over that time we have grown to become a preferred supplier to some of the biggest names in the Australian Mining, Construction and Tunnelling industries as well as exporting our equipment into Asia, South America and New Zealand.

We manufacture a wide range of products to meet all your hard rock and soft rock drilling challenges. Our products are made using the latest technology and the highest quality materials available, including Tungsten Carbide, Poly Crystalline Diamond and high grade steels to ensure you get the best results across a range of drilling conditions.

We work together with you to ensure you always get the exact part needed to get the job done efficiently and cost effectively. Our technical team is available to go on site and customise drilling equipment to meet the specific requirements of the job, to maximise the productivity and the cost effectiveness of your project.

### UNDERGROUND MINING



### TUNNELLING

### CIVIL INFRASTRUCTURE



# INDUSTRIAL ACCESSORIES

## NEW SOUTH WALES

9/14 Yangan Drive,  
 Beresfield NSW 2322

ph: +61 (0)2 4966 5028

e: orders@quarrymining.com

## QUEENSLAND

5/35 Iridium Drive,  
 Mackay QLD 4740

ph: +61 (0)7 4998 5295

e: ordersqld@quarrymining.com

## Distribution Warehouse - Sydney

Unit 1, No.1 Bearing Road,  
 Seven Hills NSW 2147

ph: 0499 707 553

e: orders@quarrymining.com



QMS Certification Services



QMS Certification Services



QMS Certification Services

## CONTENTS

Claw Couplings.....	4
Type A.....	4
Type S.....	6
Hoses.....	8
Hose Accessories.....	10
Lubricators.....	11
Camlocks.....	12
Clamps.....	19
Bandit System.....	25
Pipe Fittings - Gal Mal.....	27
Pipe Fittings - Black Steel.....	34
Valves.....	41
Accessories.....	48
Manifolds.....	51
Pneumatic Equipment Services.....	52
Vent Bands.....	54
Cable Straps.....	55

# CLAW COUPLINGS

## TYPE A

### ZP Steel

Threaded Male

SIZE (BSP)	PART NUMBER
3/8	DX-08-001-12-000
1/2	DX-08-001-09-000
3/4	DX-08-001-06-000
1	DX-08-001-03-000



### ZP Steel

Threaded Female

SIZE (BSP)	PART NUMBER
3/8	DX-08-001-13-000
1/2	DX-08-001-10-000
3/4	DX-08-001-07-000
1	DX-08-001-04-000



### ZP Steel

Hosetail

SIZE (mm)	PART NUMBER
10	DX-08-001-14-000
12	DX-08-001-11-000
19	DX-08-001-08-000
25	DX-08-001-05-000
32	DX-08-001-02-000





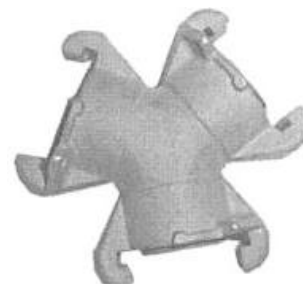
# CLAW COUPLINGS

## TYPE A

### ZP Steel

Connector 3 Way

SIZE (RANGE)	PART NUMBER
10 to 32	DX-08-001-16-000



### ZP Steel

Blanking End

SIZE (mm)	PART NUMBER
10 to 76	DX-08-001-15-000
10 to 32	CACSS56-01032 (Stainless)



### Seal

Type A Standard

SIZE (RANGE)	PART NUMBER
10 to 32	DX-AWR4



### Steel Plated

D Clip

SIZE (RANGE)	PART NUMBER
10 to 76	DX-05-010-02-000



CLAW COUPLINGS

# CLAW COUPLINGS

CLAW COUPLINGS

## TYPE S

### ZP Steel

Threaded Male

SIZE (BSP)	PART NUMBER
3/8	DX-08-013-23-000
1/2	DX-08-013-20-000
3/4	DX-08-013-17-000
1	DX-08-013-14-000
2	DX-08-013-04-000
3	DX-08-013-01-000



### ZP Steel

Threaded Female

SIZE (BSP)	PART NUMBER
3/8	DX-08-013-24-000
1/2	DX-08-013-21-000
3/4	DX-08-013-18-000
1	DX-08-013-15-000
2	DX-08-013-05-000
3	DX-08-013-02-000



### ZP Steel

Hosetail

HOSETAIL (mm)	PART NUMBER
12	DX-08-013-22-000
19	DX-08-013-19-000
25	DX-08-013-16-000
51	DX-08-013-06-000
76	DX-08-013-35-000





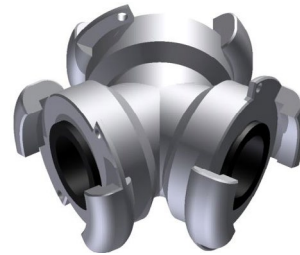
# CLAW COUPLINGS

## TYPE S

### ZP Steel

Connector – 3 Way

SIZE (RANGE)	PART NUMBER
38 to 51	DX-08-013-28-000



### ZP Steel

Blanking End

SIZE (RANGE)	PART NUMBER
12 to 25	DX-08-013-26-000



### Seal

Bellows

SIZE (RANGE)	PART NUMBER
10 to 25	DX-05-007-07-000
38 to 51	DX-05-007-05-000
76	DX-08-007-09-002



CLAW COUPLINGS

## HOSES

### Air / Water (Yellow) 20m

Rubber - 20bar / 290PSI – c/w Type A Claw & Clamps

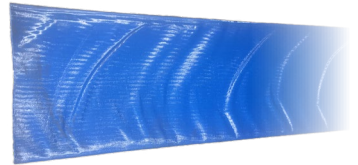
SIZE (mm)	PART NUMBER
12	HOSE-RD12012-C
19	HOSE-RD12019-C
25	HOSE-RD12025-C
51	HOSE-RD12051-C



### Layflat (Blue) 100m

PVC

SIZE (mm)	PART NUMBER
25	HOSE-LFD-025
51	HOSE-LFD-051
76	HOSE-LFD-076
102	HOSE-LFD-102



### Suction (Grey) 20m

PVC – \*available fitted with camlocks

SIZE (mm)	PART NUMBER
25	HOSE-PS21025
51	HOSE-PS21051
76	HOSE-PS21076
102	HOSE-PS21102





# HOSES

## HOSES

### Multi-Purpose (Red) 20m

Rubber - 20bar / 290PSI – c/w Type A Claw & Clamps

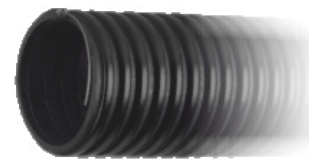
SIZE (mm)	PART NUMBER
12	HOSE-RD31012-C
19	HOSE-RD31019-C
25	HOSE-RD31025-C
51	HOSE-RD31051-C



### Dust Extraction - per metre

Rubber

SIZE (mm)	PART NUMBER
127	HOSE-RS83127
152	HOSE-RS83152



### Y-Piece (Yellow)

Rubber - 20bar / 290PSI – c/w Type A Claw & Clamps

SIZE (mm)	PART NUMBER
25 x 25 x 12	Y-PIECE-HOSE



# HOSE ACCESSORIES

## WHIPCHECKS

### Whipcheck

Suitable for U/G use

SIZE (mm) (HOSE OD)	PART NUMBER
10-32	DX-08-023-90-000
32-50	DX-08-023-91-000
63-100	DX-08-023-92-000



## WHIP SOCKS

### Whip Sock

Double Eye

SIZE (mm)	PART NUMBER
28-40	ACC-WHIPSOCK-028040
40-50	ACC-WHIPSOCK-040050
50-60	ACC-WHIPSOCK-050060
60-70	ACC-WHIPSOCK-060070
70-85	ACC-WHIPSOCK-070085
85-100	ACC-WHIPSOCK-085100
100-120	ACC-WHIPSOCK-100120
120-150	ACC-WHIPSOCK-120150
150-190	ACC-WHIPSOCK-150190





## LUBRICATORS

### Adjustable Jet Oil Lubricator

Cast Iron

**SIZE (Litres)**

1.2

**PART NUMBER**

DX-08-066-02-000



### Small In-line Oiler

Aluminium

**SIZE (ml)**

150

**PART NUMBER**

PRH-I-L-OILER



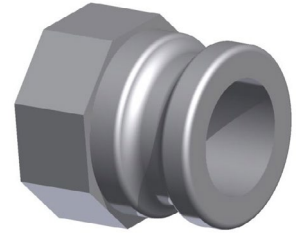
## CAMLOCKS

### Adaptor x BSP Female

Type A

SIZE (ADAPTOR)	PART NO. (ALUMINIUM)	PART NO. (STAINLESS)
15	CMLK-AL-015-A	CMLK-SS-015-A
20	CMLK-AL-020-A	CMLK-SS-020-A
25	CMLK-AL-025-A	CMLK-SS-025-A
32	CMLK-AL-032-A	CMLK-SS-032-A
40	CMLK-AL-040-A	CMLK-SS-040-A
50	CMLK-AL-050-A	CMLK-SS-050-A
65	CMLK-AL-065-A	CMLK-SS-065-A
80	CMLK-AL-080-A	CMLK-SS-080-A
100	CMLK-AL-100-A	CMLK-SS-100-A
125	CMLK-AL-125-A	CMLK-SS-125-A
150	CMLK-AL-150-A	CMLK-SS-150-A
200	CMLK-AL-200-A	CMLK-SS-200-A

To specify material, **AL** (aluminium) or **SS** (stainless steel)



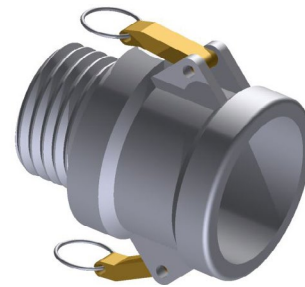
## CAMLOCKS

### Coupler x BSP Male

Type B

SIZE (COUPLER)	PART NO. (ALUMINIUM)	PART NO. (STAINLESS)
15	CMLK-AL-015-B	CMLK-SS-015-B
20	CMLK-AL-020-B	CMLK-SS-020-B
25	CMLK-AL-025-B	CMLK-SS-025-B
32	CMLK-AL-032-B	CMLK-SS-032-B
40	CMLK-AL-040-B	CMLK-SS-040-B
50	CMLK-AL-050-B	CMLK-SS-050-B
65	CMLK-AL-065-B	CMLK-SS-065-B
80	CMLK-AL-080-B	CMLK-SS-080-B
100	CMLK-AL-100-B	CMLK-SS-100-B
125	CMLK-AL-125-B	CMLK-SS-125-B
150	CMLK-AL-150-B	CMLK-SS-150-B
200	CMLK-AL-200-B	CMLK-SS-200-B

To specify material, **AL** (aluminium) or **SS** (stainless steel)

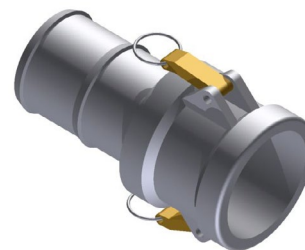


### Coupler x Hosetail

Type C

SIZE (COUPLER)	PART NO. (ALUMINIUM)	PART NO. (STAINLESS)
15	CMLK-AL-015-C	CMLK-SS-015-C
20	CMLK-AL-020-C	CMLK-SS-020-C
25	CMLK-AL-025-C	CMLK-SS-025-C
32	CMLK-AL-032-C	CMLK-SS-032-C
40	CMLK-AL-040-C	CMLK-SS-040-C
50	CMLK-AL-050-C	CMLK-SS-050-C
65	CMLK-AL-065-C	CMLK-SS-065-C
80	CMLK-AL-080-C	CMLK-SS-080-C
100	CMLK-AL-100-C	CMLK-SS-100-C
125	CMLK-AL-125-C	CMLK-SS-125-C
150	CMLK-AL-150-C	CMLK-SS-150-C
200	CMLK-AL-200-C	CMLK-SS-200-C

To specify material, **AL** (aluminium) or **SS** (stainless steel)





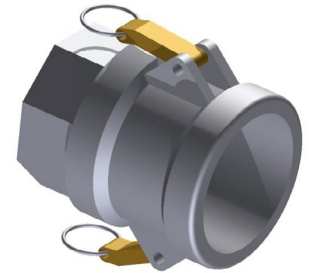
## CAMLOCKS

### Coupler x BSP Female

Type D

SIZE (COUPLER)	PART NO. (ALUMINIUM)	PART NO. (STAINLESS)
15	CMLK-AL-015-D	CMLK-SS-015-D
20	CMLK-AL-020-D	CMLK-SS-020-D
25	CMLK-AL-025-D	CMLK-SS-025-D
32	CMLK-AL-032-D	CMLK-SS-032-D
40	CMLK-AL-040-D	CMLK-SS-040-D
50	CMLK-AL-050-D	CMLK-SS-050-D
65	CMLK-AL-065-D	CMLK-SS-065-D
80	CMLK-AL-080-D	CMLK-SS-080-D
100	CMLK-AL-100-D	CMLK-SS-100-D
125	CMLK-AL-125-D	CMLK-SS-125-D
150	CMLK-AL-150-D	CMLK-SS-150-D
200	CMLK-AL-200-D	CMLK-SS-200-D

To specify material, **AL** (aluminium) or **SS** (stainless steel)



### Adaptor x Hosetail

Type E

SIZE (COUPLER)	PART NO. (ALUMINIUM)	PART NO. (STAINLESS)
15	CMLK-AL-015-E	CMLK-SS-015-E
20	CMLK-AL-020-E	CMLK-SS-020-E
25	CMLK-AL-025-E	CMLK-SS-025-E
32	CMLK-AL-032-E	CMLK-SS-032-E
40	CMLK-AL-040-E	CMLK-SS-040-E
50	CMLK-AL-050-E	CMLK-SS-050-E
65	CMLK-AL-065-E	CMLK-SS-065-E
80	CMLK-AL-080-E	CMLK-SS-080-E
100	CMLK-AL-100-E	CMLK-SS-100-E
125	CMLK-AL-125-E	CMLK-SS-125-E
150	CMLK-AL-150-E	CMLK-SS-150-E
200	CMLK-AL-200-E	CMLK-SS-200-E

To specify material, **AL** (aluminium) or **SS** (stainless steel)



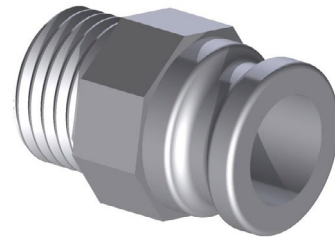
**CAMLOCKS**

**Adaptor x BSP Male**

Type F

SIZE (ADAPTOR)	PART NO. (ALUMINIUM)	PART NO. (STAINLESS)
15	CMLK-AL-015-F	CMLK-SS-015-F
20	CMLK-AL-020-F	CMLK-SS-020-F
25	CMLK-AL-025-F	CMLK-SS-025-F
32	CMLK-AL-032-F	CMLK-SS-032-F
40	CMLK-AL-040-F	CMLK-SS-040-F
50	CMLK-AL-050-F	CMLK-SS-050-F
65	CMLK-AL-065-F	CMLK-SS-065-F
80	CMLK-AL-080-F	CMLK-SS-080-F
100	CMLK-AL-100-F	CMLK-SS-100-F
125	CMLK-AL-125-F	CMLK-SS-125-F
150	CMLK-AL-150-F	CMLK-SS-150-F
200	CMLK-AL-200-F	CMLK-SS-200-F

To specify material, **AL** (aluminium) or **SS** (stainless steel)

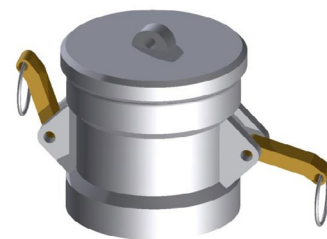


**Coupler Dust Cap**

Type DC

SIZE (COUPLER)	PART NO. (ALUMINIUM)	PART NO. (STAINLESS)
15	CMLK-AL-015-DC	CMLK-SS-015-DC
20	CMLK-AL-020-DC	CMLK-SS-020-DC
25	CMLK-AL-025-DC	CMLK-SS-025-DC
32	CMLK-AL-032-DC	CMLK-SS-032-DC
40	CMLK-AL-040-DC	CMLK-SS-040-DC
50	CMLK-AL-050-DC	CMLK-SS-050-DC
65	CMLK-AL-065-DC	CMLK-SS-065-DC
80	CMLK-AL-080-DC	CMLK-SS-080-DC
100	CMLK-AL-100-DC	CMLK-SS-100-DC
125	CMLK-AL-125-DC	CMLK-SS-125-DC
150	CMLK-AL-150-DC	CMLK-SS-150-DC
200	CMLK-AL-200-DC	CMLK-SS-200-DC

To specify material, **AL** (aluminium) or **SS** (stainless steel)



## CAMLOCKS

### Adaptor Dust Plug

Type DP

SIZE (COUPLER)	PART NO. (ALUMINIUM)	PART NO. (STAINLESS)
15	CMLK-AL-015-DP	CMLK-SS-015-DP
20	CMLK-AL-020-DP	CMLK-SS-020-DP
25	CMLK-AL-025-DP	CMLK-SS-025-DP
32	CMLK-AL-032-DP	CMLK-SS-032-DP
40	CMLK-AL-040-DP	CMLK-SS-040-DP
50	CMLK-AL-050-DP	CMLK-SS-050-DP
65	CMLK-AL-065-DP	CMLK-SS-065-DP
80	CMLK-AL-080-DP	CMLK-SS-080-DP
100	CMLK-AL-100-DP	CMLK-SS-100-DP
125	CMLK-AL-125-DP	CMLK-SS-125-DP
150	CMLK-AL-150-DP	CMLK-SS-150-DP
200	CMLK-AL-200-DP	CMLK-SS-200-DP

To specify material, **AL** (aluminium) or **SS** (stainless steel)





## CAMLOCK ADAPTORS

### Adaptor x Adaptor

Type AA

SIZE (COUPLER)	SIZE (ADAPTOR)	PART NO. (ALUMINIUM)	PART NO. (STAINLESS)
25	25	CMLK-AL-050-A-A	CMLK-SS-050-A-A
32	32	CMLK-AL-032-A-A	CMLK-SS-032-A-A
40	40	CMLK-AL-040-A-A	CMLK-SS-040-A-A
50	50	CMLK-AL-050-A-A	CMLK-SS-050-A-A
65	65	CMLK-AL-065-A-A	CMLK-SS-065-A-A
80	80	CMLK-AL-080-A-A	CMLK-SS-080-A-A
100	100	CMLK-AL-100-A-A	CMLK-SS-100-A-A

To specify material, **AL** (aluminium) or **SS** (stainless steel)



### Coupler x Adaptor

Type DA

SIZE (COUPLER)	SIZE (ADAPTOR)	PART NO. (ALUMINIUM)	PART NO. (STAINLESS)
40	25	CMLK-AL-4025-D-A	CMLK-SS-4025-D-A
	50	CMLK-AL-5025-D-A	CMLK-SS-5025-D-A
50	40	CMLK-AL-5040-D-A	CMLK-SS-5040-D-A
	80	CMLK-AL-5080-D-A	CMLK-SS-5080-D-A
	100	CMLK-AL-50100-D-A	CMLK-SS-50100-D-A
80	40	CMLK-AL-8040-D-A	CMLK-SS-8040-D-A
	50	CMLK-AL-8050-D-A	CMLK-SS-8050-D-A
	100	CMLK-AL-80100-D-A	CMLK-SS-80100-D-A
100	50	CMLK-AL-10050-D-A	CMLK-SS-10050-D-A
	65	CMLK-AL-10065-D-A	CMLK-SS-10065-D-A
	80	CMLK-AL-10080-D-A	CMLK-SS-10080-D-A
	150	CMLK-AL-100150-D-A	CMLK-SS-100150-D-A
150	100	CMLK-AL-150100-D-A	CMLK-SS-150100-D-A

To specify material, **AL** (aluminium) or **SS** (stainless steel)



## CAMLOCK ADAPTORS

### Coupler x Coupler

Type DD

SIZE (COUPLER)	SIZE (ADAPTOR)	PART NO. (ALUMINIUM)	PART NO. (STAINLESS)
40	40	CMLK-AL-040-D-D	CMLK-SS-040-D-D
50	50	CMLK-AL-050-D-D	CMLK-SS-050-D-D
65	65	CMLK-AL-065-D-D	CMLK-SS-065-D-D
80	80	CMLK-AL-080-D-D	CMLK-SS-080-D-D
100	100	CMLK-AL-100-D-D	CMLK-SS-100-D-D

To specify material, **AL** (aluminium) or **SS** (stainless steel)



# CLAMPS

## HIGH PRESSURE CLAMPS

### Claw Clamps

SIZE (HOSE ID)	SIZE (RANGE)	PART NUMBER
12	22-28	DX-08-023-42-000
19	29-34	DX-08-023-43-000
25	35-40	DX-08-023-46-000
38	53.1 - 57.9	DX-08-023-50-000
51	63.5 - 70.6	DX-08-023-03-000



### Double Bolt

#### Standard

SIZE (RANGE)	PART NUMBER
17 - 22	CLAMP-DB-022
22 - 29	CLAMP-DB-029
29 - 34	CLAMP-DB-034
33 - 40	CLAMP-DB-040
41 - 49	CLAMP-DB-049
48 - 60	CLAMP-DB-060
60 - 76	CLAMP-DB-076
89 - 94	CLAMP-DB-094
95 - 114	CLAMP-DB-115
89 - 101	CLAMP-DB-400
103 - 117	CLAMP-DB-463
109 - 133	CLAMP-DB-525
127 - 140	CLAMP-DB-550
135 - 154	CLAMP-DB-600
155 - 175	CLAMP-DB-675
176 - 194	CLAMP-DB-769
195 - 206	CLAMP-DB-818
210 - 226	CLAMP-DB-875
227 - 250	CLAMP-DB-988
252 - 289	CLAMP-DB-1125
284 - 330	CLAMP-DB-1275
335 - 381	CLAMP-DB-1450
383 - 445	CLAMP-DB-1700





# CLAMPS

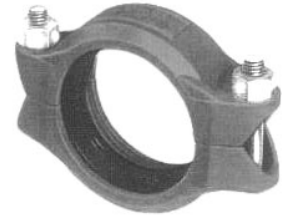
CLAMPS

## VICTAULIC

### Victaulic

Shouldered

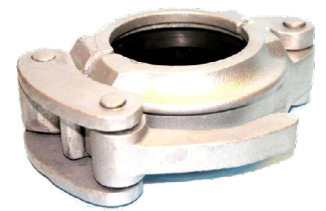
SIZE (NOM)	SIZE (PIPE DIA.)	PART NUMBER
50	60.3	DX-08-048-20-000
80	76.1	DX-08-048-20-002
100	88.9	DX-08-048-20-003
150	165.1	DX-08-048-20-005
200	219.1	DX-08-048-20-006
250	273.1	DX-08-048-20-007
300	273.1	DX-08-048-20-008
350	323.9	DX-08-048-20-020
400	355.6	DX-08-048-20-021
450	457.0	DX-08-048-20-022
600	610.0	DX-08-048-20-023
		DX-08-048-20-024



### Victaulic

Quick Release

SIZE (NOM)	SIZE (PIPE DIA.)	PART NUMBER
50	60.3	DX-08-048-19-000G
80	76.1	DX-08-048-19-002G
100	114.3	DX-08-048-19-003G
150	165.1	DX-08-048-19-005G
200	219.1	DX-08-048-19-006G



# CLAMPS

## SUPER CLAMPS

### ZP Steel

SIZE (BAND)	SIZE (RANGE)	PART NUMBER
18	17 - 19	CLAMP-MAX-ZPS-019
	19 - 21	CLAMP-MAX-ZPS-021
	21 - 23	CLAMP-MAX-ZPS-023
	23 - 25	CLAMP-MAX-ZPS-025
	26 - 28	CLAMP-MAX-ZPS-028
	29 - 31	CLAMP-MAX-ZPS-031
	32 - 35	CLAMP-MAX-ZPS-035
	36 - 39	CLAMP-MAX-ZPS-037
	38 - 41	CLAMP-MAX-ZPS-039
	40 - 43	CLAMP-MAX-ZPS-043
20	44 - 47	CLAMP-MAX-ZPS-047
	48 - 51	CLAMP-MAX-ZPS-051
	52 - 55	CLAMP-MAX-ZPS-055
	56 - 59	CLAMP-MAX-ZPS-059
	60 - 63	CLAMP-MAX-ZPS-063
	64 - 67	CLAMP-MAX-ZPS-067
25	68 - 73	CLAMP-MAX-ZPS-073
	74 - 79	CLAMP-MAX-ZPS-079
	80 - 85	CLAMP-MAX-ZPS-085
	86 - 91	CLAMP-MAX-ZPS-091
	92 - 97	CLAMP-MAX-ZPS-097
	98 - 103	CLAMP-MAX-ZPS-103
	104 - 112	CLAMP-MAX-ZPS-112
	113 - 121	CLAMP-MAX-ZPS-121
	122 - 130	CLAMP-MAX-ZPS-130
	30	131 - 139
140 - 148		CLAMP-MAX-ZPS-148
149 - 161		CLAMP-MAX-ZPS-161
162 - 174		CLAMP-MAX-ZPS-174
175 - 187		CLAMP-MAX-ZPS-187
188 - 200		CLAMP-MAX-ZPS-200
201 - 213		CLAMP-MAX-ZPS-213
214 - 226		CLAMP-MAX-ZPS-226
227 - 239		CLAMP-MAX-ZPS-239
240 - 252		CLAMP-MAX-ZPS-252
253 - 260	CLAMP-MAX-ZPS-260	
261 - 278	CLAMP-MAX-ZPS-278	



# CLAMPS

CLAMPS

## SUPER CLAMPS

### Stainless Steel

SIZE (BAND)	SIZE (RANGE)	PART NUMBER
18	17 - 19	CLAMP-MAX-SS-019
	19 - 21	CLAMP-MAX-SS-021
	21 - 23	CLAMP-MAX-SS-023
	23 - 25	CLAMP-MAX-SS-025
	26 - 28	CLAMP-MAX-SS-028
	29 - 31	CLAMP-MAX-SS-031
	32 - 35	CLAMP-MAX-SS-035
	36 - 39	CLAMP-MAX-SS-037
	38 - 41	CLAMP-MAX-SS-039
	40 - 43	CLAMP-MAX-SS-043
20	44 - 47	CLAMP-MAX-SS-047
	48 - 51	CLAMP-MAX-SS-051
	52 - 55	CLAMP-MAX-SS-055
	56 - 59	CLAMP-MAX-SS-059
	60 - 63	CLAMP-MAX-SS-063
	64 - 67	CLAMP-MAX-SS-067
25	68 - 73	CLAMP-MAX-SS-073
	74 - 79	CLAMP-MAX-SS-079
	80 - 85	CLAMP-MAX-SS-085
	86 - 91	CLAMP-MAX-SS-091
	92 - 97	CLAMP-MAX-SS-097
	98 - 103	CLAMP-MAX-SS-103
	104 - 112	CLAMP-MAX-SS-112
	113 - 121	CLAMP-MAX-SS-121
	122 - 130	CLAMP-MAX-SS-130
	30	131 - 139
140 - 148		CLAMP-MAX-SS-148
149 - 161		CLAMP-MAX-SS-161
162 - 174		CLAMP-MAX-SS-174
175 - 187		CLAMP-MAX-SS-187
188 - 200		CLAMP-MAX-SS-200
201 - 213		CLAMP-MAX-SS-213
214 - 226		CLAMP-MAX-SS-226
227 - 239		CLAMP-MAX-SS-239
240 - 252		CLAMP-MAX-SS-252
252 - 265		CLAMP-MAX-SS-260
265 - 278		CLAMP-MAX-SS-278
278 - 291		CLAMP-MAX-SS-291
291 - 304	CLAMP-MAX-SS-304	
304 - 317	CLAMP-MAX-SS-317	
317 - 330	CLAMP-MAX-SS-330	



# CLAMPS

## WORM DRIVE CLAMPS

### Non Perforated Band

All Steel

SIZE (BAND)	SIZE (RANGE)	PART NUMBER
7.5	8 - 12	CLAMP-WD-ZPS-012
	10 - 16	CLAMP-WD-ZPS-016
9	8 - 12	CLAMP-WD-ZPS-012
	10 - 16	CLAMP-WD-ZPS-016
	12 - 22	CLAMP-WD-ZPS-022
12	16 - 27	CLAMP-WD-ZPS-027
	20 - 32	CLAMP-WD-ZPS-032
	25 - 40	CLAMP-WD-ZPS-040
	30 - 45	CLAMP-WD-ZPS-045
	35 - 50	CLAMP-WD-ZPS-050
	40 - 60	CLAMP-WD-ZPS-060
	50 - 70	CLAMP-WD-ZPS-070
	60 - 80	CLAMP-WD-ZPS-080
	70 - 90	CLAMP-WD-ZPS-090
	80 - 100	CLAMP-WD-ZPS-100
	90 - 110	CLAMP-WD-ZPS-110
	100 - 120	CLAMP-WD-ZPS-120
	110 - 130	CLAMP-WD-ZPS-130
	120 - 140	CLAMP-WD-ZPS-140
130 - 150	CLAMP-WD-ZPS-150	
140 - 160	CLAMP-WD-ZPS-160	
150 - 170	CLAMP-WD-ZPS-170	
160 - 180	CLAMP-WD-ZPS-180	
170 - 190	CLAMP-WD-ZPS-190	
180 - 200	CLAMP-WD-ZPS-200	
190 - 210	CLAMP-WD-ZPS-210	
200 - 220	CLAMP-WD-ZPS-220	
210 - 230	CLAMP-WD-ZPS-230	
230 - 250	CLAMP-WD-ZPS-250	
260 - 280	CLAMP-WD-ZPS-280	
280 - 300	CLAMP-WD-ZPS-300	



CLAMPS



# CLAMPS

CLAMPS

## WORM DRIVE CLAMPS

### Non Perforated Band

All Stainless – Grade 430

SIZE (BAND)	SIZE (mm)	PART NUMBER
9	8 - 16	CLAMP-WD-SS-016
	12 - 22	CLAMP-WD-SS-022
	16 - 25	CLAMP-WD-SS-025
	20 - 32	CLAMP-WD-SS-032
	25 - 40	CLAMP-WD-SS-040
	30 - 45	CLAMP-WD-SS-045
	35 - 50	CLAMP-WD-SS-050
	40 - 60	CLAMP-WD-SS-060
	50 - 70	CLAMP-WD-SS-070
	60 - 80	CLAMP-WD-SS-080
	70 - 90	CLAMP-WD-SS-090
	80 - 100	CLAMP-WD-SS-100
	90 - 110	CLAMP-WD-SS-110



# BANDIT SYSTEM

## BANDING STRAP SYSTEM

### Band

SIZE (BAND)	SIZE (COIL)	PART NUMBER
12.7	30	BAND-STRAP-012
15.9	30	BAND-STRAP-015
19.1	30	BAND-STRAP-020



### Buckles

SIZE (BAND)	PART NUMBER
12.7	BANDIT-BUCK-012
15.9	BANDIT-BUCK-015
19.1	BANDIT-BUCK-020

### Tool

Hand Tool - Standard

SIZE	PART NUMBER
Standard	BAND-TOOL



BANDIT SYSTEM

# BANDIT SYSTEM

BANDIT SYSTEM

## CENTRE PUNCH SYSTEM

### Centre Punch Clamps

SIZE (BAND)	SIZE (ID)	PART NUMBER
16 x 0.7mm	25.4	CENPUN-CL-025
	50.8	CENPUN-CL-050
	76.1	CENPUN-CL-076



### Preform Clamps

SIZE (BAND)	SIZE (ID)	PART NUMBER
9.5	20.6	CLAMP-BAND-SS-20
	25.4	CLAMP-BAND-SS-25
	34.9	CLAMP-BAND-SS-32
	47.6	CLAMP-BAND-SS-50
	76.2	CLAMP-BAND-SS-76



### Tool

PART NUMBER
CENPUN-TOOL



# PIPE FITTINGS - GAL MAL

## GALVANISED MALLEABLE IRON

### Nipples

SIZE (mm)	PART NUMBER
6	FIT-NIP-GM-006
10	FIT-NIP-GM-010
15	FIT-NIP-GM-015
20	FIT-NIP-GM-020
25	FIT-NIP-GM-025
32	FIT-NIP-GM-032
40	FIT-NIP-GM-040
50	FIT-NIP-GM-050
65	FIT-NIP-GM-065
80	FIT-NIP-GM-080
100	FIT-NIP-GM-100
150	FIT-NIP-GM-150



### Reducing Nipples

SIZE (mm)	PART NUMBER
10 - 6	FIT-NIPRD-GM-010-006
15 - 6	FIT-NIPRD-GM-015-006
15 - 10	FIT-NIPRD-GM-015-010
20 - 10	FIT-NIPRD-GM-020-010
20 - 15	FIT-NIPRD-GM-020-015
25 - 15	FIT-NIPRD-GM-025-015
25 - 20	FIT-NIPRD-GM-025-020
32 - 25	FIT-NIPRD-GM-032-025
40 - 20	FIT-NIPRD-GM-040-020
40 - 25	FIT-NIPRD-GM-040-025
40 - 32	FIT-NIPRD-GM-040-032
50 - 25	FIT-NIPRD-GM-050-025
50 - 32	FIT-NIPRD-GM-050-032
50 - 40	FIT-NIPRD-GM-050-040
65 - 50	FIT-NIPRD-GM-065-050
80 - 50	FIT-NIPRD-GM-080-050
80 - 65	FIT-NIPRD-GM-080-065
100 - 50	FIT-NIPRD-GM-100-050
100 - 65	FIT-NIPRD-GM-100-065
100 - 80	FIT-NIPRD-GM-100-080



METRIC (mm)	BSP (inches)
6	1/4
10	3/8
15	1/2
20	3/4
25	1
32	1.1/4
40	1.1/2
50	2
65	2.1/2
80	3
100	4
150	6

PIPE FITTINGS - GAL MAL



# PIPE FITTINGS - GAL MAL

PIPE FITTINGS - GAL MAL

## GALVANISED MALLEABLE IRON

### Sockets

SIZE (mm)	PART NUMBER
6	FIT-SOC-GM-006
10	FIT-SOC-GM-010
15	FIT-SOC-GM-015
20	FIT-SOC-GM-020
25	FIT-SOC-GM-025
32	FIT-SOC-GM-032
40	FIT-SOC-GM-040
50	FIT-SOC-GM-050
65	FIT-SOC-GM-065
80	FIT-SOC-GM-080
100	FIT-SOC-GM-100
150	FIT-SOC-GM-150



### Reducing Sockets

SIZE (mm)	PART NUMBER
15 - 10	FIT-SOCD-GM-015-010
20 - 10	FIT-SOCD-GM-020-010
20 - 15	FIT-SOCD-GM-020-015
25 - 15	FIT-SOCD-GM-025-015
25 - 20	FIT-SOCD-GM-025-020
32 - 15	FIT-SOCD-GM-032-015
32 - 20	FIT-SOCD-GM-032-020
32 - 25	FIT-SOCD-GM-032-025
40 - 20	FIT-SOCD-GM-040-020
40 - 25	FIT-SOCD-GM-040-025
40 - 32	FIT-SOCD-GM-040-032
50 - 25	FIT-SOCD-GM-050-025
50 - 32	FIT-SOCD-GM-050-032
50 - 40	FIT-SOCD-GM-050-040
65 - 50	FIT-SOCD-GM-065-050
80 - 50	FIT-SOCD-GM-080-050
80 - 65	FIT-SOCD-GM-080-065
100 - 50	FIT-SOCD-GM-100-050
100 - 65	FIT-SOCD-GM-100-065
100 - 80	FIT-SOCD-GM-100-080



METRIC (mm)	BSP (inches)
6	1/4
10	3/8
15	1/2
20	3/4
25	1
32	1.1/4
40	1.1/2
50	2
65	2.1/2
80	3
100	4
150	6

# PIPE FITTINGS - GAL MAL

## GALVANISED MALLEABLE IRON

### Elbow

Female 90

SIZE (mm)	PART NUMBER
6	FIT-EL90-FF-GM-006
10	FIT-EL90-FF-GM-010
15	FIT-EL90-FF-GM-015
20	FIT-EL90-FF-GM-020
25	FIT-EL90-FF-GM-025
32	FIT-EL90-FF-GM-032
40	FIT-EL90-FF-GM-040
50	FIT-EL90-FF-GM-050
65	FIT-EL90-FF-GM-065
80	FIT-EL90-FF-GM-080
100	FIT-EL90-FF-GM-100



### Reducing Elbows

Female 90

SIZE (mm)	PART NUMBER
20 - 15	FIT-EL90-FF-GM-020-015
25 - 20	FIT-EL90-FF-GM-025-020

### Elbow

Male x Female 90

SIZE (mm)	PART NUMBER
10	FIT-EL90-MF-GM-010
15	FIT-EL90-MF-GM-015
20	FIT-EL90-MF-GM-020
25	FIT-EL90-MF-GM-025
32	FIT-EL90-MF-GM-032
40	FIT-EL90-MF-GM-040
50	FIT-EL90-MF-GM-050
65	FIT-EL90-MF-GM-065
80	FIT-EL90-MF-GM-080
100	FIT-EL90-MF-GM-100



PIPE FITTINGS - GAL MAL

# PIPE FITTINGS - GAL MAL

PIPE FITTINGS - GAL MAL

## GALVANISED MALLEABLE IRON

### Equal Tees

SIZE (mm)	PART NUMBER
6	FIT-TEE-GM-006
10	FIT-TEE-GM-010
15	FIT-TEE-GM-015
20	FIT-TEE-GM-020
25	FIT-TEE-GM-025
32	FIT-TEE-GM-032
40	FIT-TEE-GM-040
50	FIT-TEE-GM-050
65	FIT-TEE-GM-065
80	FIT-TEE-GM-080
100	FIT-TEE-GM-100
150	FIT-TEE-GM-150

### Unequal Tees

SIZE (mm)	PART NUMBER
20 - 15	FIT-TEERD-GM-020-015
25 - 15	FIT-TEERD-GM-025-015
25 - 20	FIT-TEERD-GM-025-020
32 - 25	FIT-TEERD-GM-032-025
40 - 25	FIT-TEERD-GM-040-025
40 - 32	FIT-TEERD-GM-040-032
50 - 25	FIT-TEERD-GM-050-025
50 - 32	FIT-TEERD-GM-050-032
50 - 40	FIT-TEERD-GM-050-040
65 - 40	FIT-TEERD-GM-065-040
65 - 50	FIT-TEERD-GM-065-050
80 - 40	FIT-TEERD-GM-080-040
80 - 50	FIT-TEERD-GM-080-050
80 - 65	FIT-TEERD-GM-080-065
100 - 65	FIT-TEERD-GM-100-065
100 - 80	FIT-TEERD-GM-100-080



METRIC (mm)	BSP (inches)
6	1/4
10	3/8
15	1/2
20	3/4
25	1
32	1.1/4
40	1.1/2
50	2
65	2.1/2
80	3
100	4
150	6

# PIPE FITTINGS - GAL MAL

## GALVANISED MALLEABLE IRON

### Hex Reducing Bush

SIZE (mm)	PART NUMBER
10 - 6	FIT-BRED-GM-010-006
15 - 6	FIT-BRED-GM-015-006
15 - 10	FIT-BRED-GM-015-010
20 - 6	FIT-BRED-GM-020-006
20 - 10	FIT-BRED-GM-020-010
20 - 15	FIT-BRED-GM-020-015
25 - 10	FIT-BRED-GM-025-010
25 - 15	FIT-BRED-GM-025-015
25 - 20	FIT-BRED-GM-025-020
32 - 15	FIT-BRED-GM-032-015
32 - 20	FIT-BRED-GM-032-020
32 - 25	FIT-BRED-GM-032-025
40 - 15	FIT-BRED-GM-040-015
40 - 20	FIT-BRED-GM-040-020
40 - 25	FIT-BRED-GM-040-025
40 - 32	FIT-BRED-GM-040-032
50 - 20	FIT-BRED-GM-050-020
50 - 25	FIT-BRED-GM-050-025
50 - 32	FIT-BRED-GM-050-032
50 - 40	FIT-BRED-GM-050-040
65 - 25	FIT-BRED-GM-065-025
65 - 32	FIT-BRED-GM-065-032
65 - 40	FIT-BRED-GM-065-040
65 - 50	FIT-BRED-GM-065-050
80 - 25	FIT-BRED-GM-080-025
80 - 32	FIT-BRED-GM-080-032
80 - 40	FIT-BRED-GM-080-040
80 - 50	FIT-BRED-GM-080-050
80 - 65	FIT-BRED-GM-080-065
100 - 50	FIT-BRED-GM-100-050
100 - 65	FIT-BRED-GM-100-065
100 - 80	FIT-BRED-GM-100-080
150 - 100	FIT-BRED-GM-150-100



PIPE FITTINGS - GAL MAL



# PIPE FITTINGS - GAL MAL

## GALVANISED MALLEABLE IRON

### Cross

Male x Female 45

SIZE (mm)	PART NUMBER
15	FIT-X-GM-015
20	FIT-X-GM-020
25	FIT-X-GM-025
32	FIT-X-GM-032
40	FIT-X-GM-040
50	FIT-X-GM-050



### Cap

SIZE (mm)	PART NUMBER
4	FIT-CAP-GM-004
6	FIT-CAP-GM-006
10	FIT-CAP-GM-010
15	FIT-CAP-GM-015
20	FIT-CAP-GM-020
25	FIT-CAP-GM-025
32	FIT-CAP-GM-032
40	FIT-CAP-GM-040
50	FIT-CAP-GM-050
65	FIT-CAP-GM-065
80	FIT-CAP-GM-080
100	FIT-CAP-GM-100
150	FIT-CAP-GM-150



METRIC (mm)	BSP (inches)
6	1/4
10	3/8
15	1/2
20	3/4
25	1
32	1.1/4
40	1.1/2
50	2
65	2.1/2
80	3
100	4
150	6

# PIPE FITTINGS - GAL MAL

## GALVANISED MALLEABLE IRON

### Plug

SIZE (mm)	PART NUMBER
4	FIT-PLUG-GM-004
6	FIT-PLUG-GM-006
10	FIT-PLUG-GM-010
15	FIT-PLUG-GM-015
20	FIT-PLUG-GM-020
25	FIT-PLUG-GM-025
32	FIT-PLUG-GM-032
40	FIT-PLUG-GM-040
50	FIT-PLUG-GM-050
65	FIT-PLUG-GM-065
80	FIT-PLUG-GM-080
100	FIT-PLUG-GM-100
150	FIT-PLUG-GM-150



### Union

#### Female

SIZE (mm)	PART NUMBER
15	FIT-UN-GM-015
20	FIT-UN-GM-020
25	FIT-UN-GM-025
32	FIT-UN-GM-032
40	FIT-UN-GM-040
50	FIT-UN-GM-050
65	FIT-UN-GM-065
80	FIT-UN-GM-080
100	FIT-UN-GM-100



# PIPE FITTINGS - BLACK STEEL

## BLACK STEEL

### Nipples

SIZE (mm)	PART NUMBER
4	FIT-NIP-BS-004
6	FIT-NIP-BS-006
10	FIT-NIP-BS-010
15	FIT-NIP-BS-015
20	FIT-NIP-BS-020
25	FIT-NIP-BS-025
32	FIT-NIP-BS-032
40	FIT-NIP-BS-040
50	FIT-NIP-BS-050
65	FIT-NIP-BS-065
80	FIT-NIP-BS-080
100	FIT-NIP-BS-100

### Reducing Nipples

SIZE (mm)	PART NUMBER
6 - 4	FIT-NIPRD-BS-006-004
10 - 4	FIT-NIPRD-BS-010-004
10 - 6	FIT-NIPRD-BS-010-006
15 - 6	FIT-NIPRD-BS-015-006
15 - 10	FIT-NIPRD-BS-015-010
20 - 10	FIT-NIPRD-BS-020-010
20 - 15	FIT-NIPRD-BS-020-015
25 - 15	FIT-NIPRD-BS-025-015
25 - 20	FIT-NIPRD-BS-025-020
32 - 20	FIT-NIPRD-BS-032-020
32 - 25	FIT-NIPRD-BS-032-025
40 - 20	FIT-NIPRD-BS-040-020
40 - 25	FIT-NIPRD-BS-040-025
40 - 32	FIT-NIPRD-BS-040-032
50 - 20	FIT-NIPRD-BS-050-020
50 - 25	FIT-NIPRD-BS-050-025
50 - 32	FIT-NIPRD-BS-050-032
50 - 40	FIT-NIPRD-BS-050-040
65 - 40	FIT-NIPRD-BS-065-040
65 - 50	FIT-NIPRD-BS-065-050
80 - 50	FIT-NIPRD-BS-080-050
80 - 65	FIT-NIPRD-BS-080-065
100 - 50	FIT-NIPRD-BS-100-050
100 - 80	FIT-NIPRD-BS-100-080



METRIC (mm)	BSP (inches)
6	1/4
10	3/8
15	1/2
20	3/4
25	1
32	1.1/4
40	1.1/2
50	2
65	2.1/2
80	3
100	4
150	6

# PIPE FITTINGS - BLACK STEEL

## BLACK STEEL

### Socket and Reducing Sockets

SIZE (mm)	PART NUMBER
4	FIT-SOC-BS-004
6	FIT-SOC-BS-006
10	FIT-SOC-BS-010
15	FIT-SOC-BS-015
20	FIT-SOC-BS-020
25	FIT-SOC-BS-025
32	FIT-SOC-BS-032
40	FIT-SOC-BS-040
50	FIT-SOC-BS-050
65	FIT-SOC-BS-065
80	FIT-SOC-BS-080
100	FIT-SOC-BS-100
150	FIT-SOC-BS-150

### Reducing Sockets

SIZE (mm)	PART NUMBER
6 - 4	FIT-SOCD-BS-006-004
10 - 6	FIT-SOCD-BS-010-006
15 - 6	FIT-SOCD-BS-015-006
15 - 10	FIT-SOCD-BS-015-010
20 - 10	FIT-SOCD-BS-020-010
20 - 15	FIT-SOCD-BS-020-015
25 - 10	FIT-SOCD-BS-025-010
25 - 15	FIT-SOCD-BS-025-015
25 - 20	FIT-SOCD-BS-025-020
32 - 20	FIT-SOCD-BS-032-020
32 - 25	FIT-SOCD-BS-032-025
40 - 20	FIT-SOCD-BS-040-020
40 - 25	FIT-SOCD-BS-040-025
40 - 32	FIT-SOCD-BS-040-032
50 - 20	FIT-SOCD-BS-050-020
50 - 25	FIT-SOCD-BS-050-025
50 - 32	FIT-SOCD-BS-050-032
50 - 40	FIT-SOCD-BS-050-040
65 - 50	FIT-SOCD-BS-065-050
80 - 50	FIT-SOCD-BS-080-050
80 - 65	FIT-SOCD-BS-080-065
100 - 80	FIT-SOCD-BS-100-080



PIPE FITTINGS - BLACK STEEL



# PIPE FITTINGS - BLACK STEEL

## BLACK STEEL

### Equal Tees

SIZE (mm)	PART NUMBER
4	FIT-TEE-BS-004
6	FIT-TEE-BS-006
10	FIT-TEE-BS-010
15	FIT-TEE-BS-015
20	FIT-TEE-BS-020
25	FIT-TEE-BS-025
32	FIT-TEE-BS-032
40	FIT-TEE-BS-040
50	FIT-TEE-BS-050
65	FIT-TEE-BS-065
80	FIT-TEE-BS-080
100	FIT-TEE-BS-100

### Unequal Tees

SIZE (mm)	PART NUMBER
10 - 6	FIT-TEERD-BS-010-006
15 - 10	FIT-TEERD-BS-015-010
20 - 10	FIT-TEERD-BS-020-010
20 - 15	FIT-TEERD-BS-020-015
25 - 15	FIT-TEERD-BS-025-015
25 - 20	FIT-TEERD-BS-025-020
32 - 20	FIT-TEERD-BS-032-020
32 - 25	FIT-TEERD-BS-032-025
40 - 15	FIT-TEERD-BS-040-015
40 - 20	FIT-TEERD-BS-040-020
40 - 25	FIT-TEERD-BS-040-025
40 - 32	FIT-TEERD-BS-040-032
50 - 20	FIT-TEERD-BS-050-020
50 - 25	FIT-TEERD-BS-050-025
50 - 32	FIT-TEERD-BS-050-032
50 - 40	FIT-TEERD-BS-050-040
65 - 50	FIT-TEERD-BS-065-050
80 - 40	FIT-TEERD-BS-080-040
80 - 50	FIT-TEERD-BS-080-050
80 - 65	FIT-TEERD-BS-080-065
100 - 80	FIT-TEERD-BS-100-080



METRIC (mm)	BSP (inches)
6	1/4
10	3/8
15	1/2
20	3/4
25	1
32	1.1/4
40	1.1/2
50	2
65	2.1/2
80	3
100	4
150	6

# PIPE FITTINGS - BLACK STEEL

## BLACK STEEL

### Elbow

Female 90

SIZE (mm)	PART NUMBER
4	FIT-EL90-FF-BS-004
6	FIT-EL90-FF-BS-006
10	FIT-EL90-FF-BS-010
15	FIT-EL90-FF-BS-015
20	FIT-EL90-FF-BS-020
25	FIT-EL90-FF-BS-025
32	FIT-EL90-FF-BS-032
40	FIT-EL90-FF-BS-040
50	FIT-EL90-FF-BS-050
65	FIT-EL90-FF-BS-065
80	FIT-EL90-FF-BS-080
100	FIT-EL90-FF-BS-100



### Elbow

Male x Female 90

SIZE (mm)	PART NUMBER
6	FIT-EL90-MF-BS-006
10	FIT-EL90-MF-BS-010
15	FIT-EL90-MF-BS-015
20	FIT-EL90-MF-BS-020
25	FIT-EL90-MF-BS-025
32	FIT-EL90-MF-BS-032
40	FIT-EL90-MF-BS-040
50	FIT-EL90-MF-BS-050
65	FIT-EL90-MF-BS-065
80	FIT-EL90-MF-BS-080
100	FIT-EL90-MF-BS-100



PIPE FITTINGS - BLACK STEEL

# PIPE FITTINGS - BLACK STEEL

## BLACK STEEL

### Hex Reducing Bush

SIZE (mm)	PART NUMBER
6 - 4	FIT-BRED-BS-006-004
10 - 4	FIT-BRED-BS-010-004
10 - 6	FIT-BRED-BS-010-006
15 - 6	FIT-BRED-BS-015-006
15 - 10	FIT-BRED-BS-015-010
20 - 6	FIT-BRED-BS-020-006
20 - 10	FIT-BRED-BS-020-010
20 - 15	FIT-BRED-BS-020-015
25 - 6	FIT-BRED-BS-025-006
25 - 10	FIT-BRED-BS-025-010
25 - 15	FIT-BRED-BS-025-015
25 - 20	FIT-BRED-BS-025-020
32 - 15	FIT-BRED-BS-032-015
32 - 20	FIT-BRED-BS-032-020
32 - 25	FIT-BRED-BS-032-025
40 - 15	FIT-BRED-BS-040-015
40 - 20	FIT-BRED-BS-040-020
40 - 25	FIT-BRED-BS-040-025
40 - 32	FIT-BRED-BS-040-032
50 - 15	FIT-BRED-BS-050-015
50 - 20	FIT-BRED-BS-050-020
50 - 25	FIT-BRED-BS-050-025
50 - 32	FIT-BRED-BS-050-032
50 - 40	FIT-BRED-BS-050-040
65 - 40	FIT-BRED-BS-065-040
65 - 50	FIT-BRED-BS-065-050
80 - 25	FIT-BRED-BS-080-025
80 - 32	FIT-BRED-BS-080-032
80 - 40	FIT-BRED-BS-080-040
80 - 50	FIT-BRED-BS-080-050
80 - 65	FIT-BRED-BS-080-065
100 - 50	FIT-BRED-BS-100-050
100 - 65	FIT-BRED-BS-100-065
100 - 80	FIT-BRED-BS-100-080



METRIC (mm)	BSP (inches)
6	1/4
10	3/8
15	1/2
20	3/4
25	1
32	1.1/4
40	1.1/2
50	2
65	2.1/2
80	3
100	4
150	6

PIPE FITTINGS - BLACK STEEL

## PIPE FITTINGS - BLACK STEEL

### BLACK STEEL

#### Cross

SIZE (mm)	PART NUMBER
6	FIT-X-006
10	FIT-X-010
15	FIT-X-015
20	FIT-X-020
25	FIT-X-025
32	FIT-X-032
40	FIT-X-040
50	FIT-X-050



#### Plug

SIZE (mm)	PART NUMBER
4	FIT-PLUG-BS-004
6	FIT-PLUG-BS-006
10	FIT-PLUG-BS-010
15	FIT-PLUG-BS-015
20	FIT-PLUG-BS-020
25	FIT-PLUG-BS-025
32	FIT-PLUG-BS-032
40	FIT-PLUG-BS-040
50	FIT-PLUG-BS-050
65	FIT-PLUG-BS-065
80	FIT-PLUG-BS-080
100	FIT-PLUG-BS-100



# PIPE FITTINGS - BLACK STEEL

PIPE FITTINGS - BLACK STEEL

## BLACK STEEL

### Cap

SIZE (mm)	PART NUMBER
6	FIT-CAP-BS-006
10	FIT-CAP-BS-010
15	FIT-CAP-BS-015
20	FIT-CAP-BS-020
25	FIT-CAP-BS-025
32	FIT-CAP-BS-032
40	FIT-CAP-BS-040
50	FIT-CAP-BS-050
65	FIT-CAP-BS-065
80	FIT-CAP-BS-080
100	FIT-CAP-BS-100



### Union

#### Female

SIZE (mm)	PART NUMBER
6	FIT-UN-FF-BS-006
10	FIT-UN-FF-BS-010
15	FIT-UN-FF-BS-015
20	FIT-UN-FF-BS-020
25	FIT-UN-FF-BS-025
32	FIT-UN-FF-BS-032
40	FIT-UN-FF-BS-040
50	FIT-UN-FF-BS-050
65	FIT-UN-FF-BS-065
80	FIT-UN-FF-BS-080
100	FIT-UN-FF-BS-100



METRIC (mm)	BSP (inches)
6	1/4
10	3/8
15	1/2
20	3/4
25	1
32	1.1/4
40	1.1/2
50	2
65	2.1/2
80	3
100	4
150	6



# VALVES

## BALL VALVES

### Lever Operated

Female x Female

SIZE (mm)	PART NUMBER
6	VAL-BALL-BSP-NPB-006
10	VAL-BALL-BSP-NPB-010
15	VAL-BALL-BSP-NPB-015
20	VAL-BALL-BSP-NPB-020
25	VAL-BALL-BSP-NPB-025
32	VAL-BALL-BSP-NPB-032
40	VAL-BALL-BSP-NPB-040
50	VAL-BALL-BSP-NPB-050
65	VAL-BALL-BSP-NPB-065
80	VAL-BALL-BSP-NPB-080
100	VAL-BALL-BSP-NPB-100



### Lockable (Nickel-plated Brass)

Female x Female

SIZE (mm)	PART NUMBER
15	VAL-BALL-BSP-NPB-015L
20	VAL-BALL-BSP-NPB-020L
25	VAL-BALL-BSP-NPB-025L
32	VAL-BALL-BSP-NPB-032L
40	VAL-BALL-BSP-NPB-040L
50	VAL-BALL-BSP-NPB-050L
65	VAL-BALL-BSP-NPB-065L
80	VAL-BALL-BSP-NPB-080L
100	VAL-BALL-BSP-NPB-100L



## BALL VALVES

### Lockable (Stainless Steel)

Female x Female

SIZE (mm)	PART NUMBER
6	VAL-BALL-BSP-SS-006
10	VAL-BALL-BSP-SS-010
15	VAL-BALL-BSP-SS-015
20	VAL-BALL-BSP-SS-020
25	VAL-BALL-BSP-SS-025
32	VAL-BALL-BSP-SS-032
40	VAL-BALL-BSP-SS-040
50	VAL-BALL-BSP-SS-050
65	VAL-BALL-BSP-SS-065
80	VAL-BALL-BSP-SS-080
100	VAL-BALL-BSP-SS-100



### Compact - T Handle (Nickel-Plated Brass)

Female x Female

SIZE (mm)	PART NUMBER
6	VAL-BALL-BSP-NPB-06T
10	VAL-BALL-BSP-NPB-10T
15	VAL-BALL-BSP-NPB-15T
20	VAL-BALL-BSP-NPB-20T
25	VAL-BALL-BSP-NPB-25T



## ECONOVALVE

SIZE (mm)	PART NUMBER
25	DX-08-062-113-00 (BSP F - BSP F)
25	DX-08-062-104-00 (BSP F - TYPE A)
25	DX-08-062-110-00 (TYPE A -TYPE A)
50	DX-08-062-848-00 (BSP F - BSP F)



## CHECK VALVES

### Swing Check

Brass Seat

SIZE (mm)	PART NUMBER
15	VAL-SWCH-BR-015
20	VAL-SWCH-BR-020
25	VAL-SWCH-BR-025
32	VAL-SWCH-BR-032
40	VAL-SWCH-BR-040
50	VAL-SWCH-BR-050
65	VAL-SWCH-BR-065
80	VAL-SWCH-BR-080
100	VAL-SWCH-BR-100



### Spring Check

SIZE (mm)	PART NUMBER
10	VAL-SPCH-BR-010
15	VAL-SPCH-BR-015
20	VAL-SPCH-BR-020
25	VAL-SPCH-BR-025
32	VAL-SPCH-BR-032
40	VAL-SPCH-BR-040
50	VAL-SPCH-BR-050
65	VAL-SPCH-BR-065
80	VAL-SPCH-BR-080
100	VAL-SPCH-BR-100



# VALVES

## FOOT VALVE

### Foot Valve

SIZE (mm)	PART NUMBER
15	VAL-FOOT-BR-015
20	VAL-FOOT-BR-020
25	VAL-FOOT-BR-025
32	VAL-FOOT-BR-032
40	VAL-FOOT-BR-040
50	VAL-FOOT-BR-050
65	VAL-FOOT-BR-065
80	VAL-FOOT-BR-080
100	VAL-FOOT-BR-100



VALVES



## BUTTERFLY VALVES

### Wafer

SIZE (mm)	PART NUMBER
50	VAL-BF-W-SS-050
65	VAL-BF-W-SS-065
80	VAL-BF-W-SS-080
100	VAL-BF-W-SS-100
150	VAL-BF-W-SS-150
200	VAL-BF-W-SS-200
250	VAL-BF-W-SS-250
300	VAL-BF-W-SS-300



### Lugged - ANSI 150

SIZE (mm)	PART NUMBER
50	VAL-BF-L-SS-050
65	VAL-BF-L-SS-065
80	VAL-BF-L-SS-080
100	VAL-BF-L-SS-100
150	VAL-BF-L-SS-150



# VALVES

## GATE VALVES

### Gate Valve

Female BSP

SIZE (mm)	PART NUMBER
15	VAL-GATE-BSP-BR-015
20	VAL-GATE-BSP-BR-020
25	VAL-GATE-BSP-BR-025
32	VAL-GATE-BSP-BR-032
40	VAL-GATE-BSP-BR-040
50	VAL-GATE-BSP-BR-050
65	VAL-GATE-BSP-BR-065
80	VAL-GATE-BSP-BR-080
100	VAL-GATE-BSP-BR-100



## Y-STRAINERS

### Inline Strainer

Y-type

SIZE (mm)	PART NUMBER
15	FIT-STY-BR-015
20	FIT-STY-BR-020
25	FIT-STY-BR-025
32	FIT-STY-BR-032
40	FIT-STY-BR-040
50	FIT-STY-BR-050

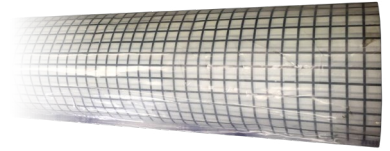


# ACCESSORIES

## Brattice

50 m roll

WIDTH (mm)	PART NUMBER
3700	BRATTICE-3750
4750	BRATTICE-4750



## Cable Straps

LENGTH (mm)	COLOUR	PART NUMBER
400	White/reflective	CAB-ST-0400-R
450	Green	CAB-ST-0450
500	Red	CAB-ST-0500
600	White	CAB-ST-0600
1200	Blue	CAB-ST-1200



## Scaling Bars

Aluminium

SIZE (mm)	PART NUMBER
1500	DX-08-100-01-946
1800	DX-08-100-01-066
2400	DX-08-100-01-861
3000	DX-08-100-01-279
3600	DX-08-100-01-183



## Scaling Bars

Alloy Steel

SIZE (mm)	PART NUMBER
1200	DX-05-100-02-295
1500	DX-05-100-01-112
1800	DX-05-100-01-113
2100	DX-05-100-01-111



# ACCESSORIES

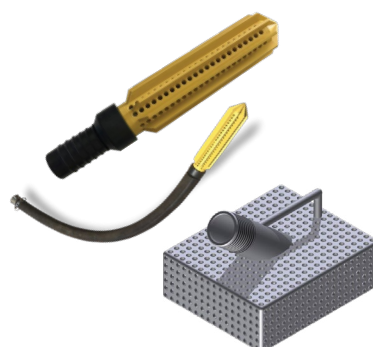
## Pogo Sticks

CONTRACTED HEIGHT	EXTENDED HEIGHT	PART NUMBER
2100	3500	ACC-POGO-2100-3500
2700	4500	ACC-POGO-2700-4500



## Strainers

SIZE (mm)	PART NUMBER
51	STRAINER-50-BOX-G
51	STRAINER-50-3-SS
51	STRAINER-50-RUBBER



## Bulk Bags

PART NUMBER	DESCRIPTION
ACC-BULKA-90X90X120	Bulk Bag with plastic liner top and bottom spout. SWL 1250kg



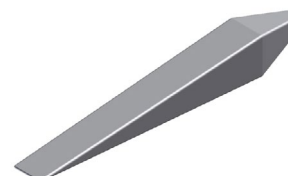
## Pelican Picks

PART NUMBER	DESCRIPTION
DX-08-080-01-000	Pelican pick



## Rock Bolt Wedges

PART NUMBER	DESCRIPTION
DX-08-056-03-000	Diamond head rock wedge



ACCESSORIES

# ACCESSORIES

## CLEAN OUT BALLS

### Clean Out Balls for Grout Line

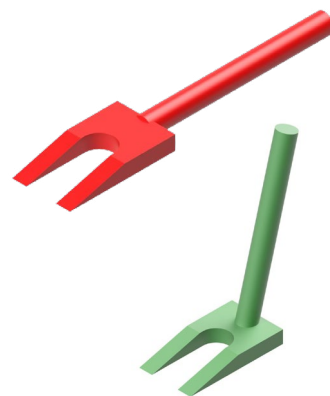
Foam (soft)

SIZE (inches)	PART NUMBER
1"	ACC-FOAM-BALL-025
2"	ACC-FOAM-BALL-050
3"	ACC-FOAM-BALL-075
4"	ACC-FOAM-BALL-100
5"	ACC-FOAM-BALL-125
6"	ACC-FOAM-BALL-150



## Pick Removers

PART NUMBER	DESCRIPTION
PICK-REM-1	Pick remover
PICK-REM-1-75H	Pick remover 75 degree handle





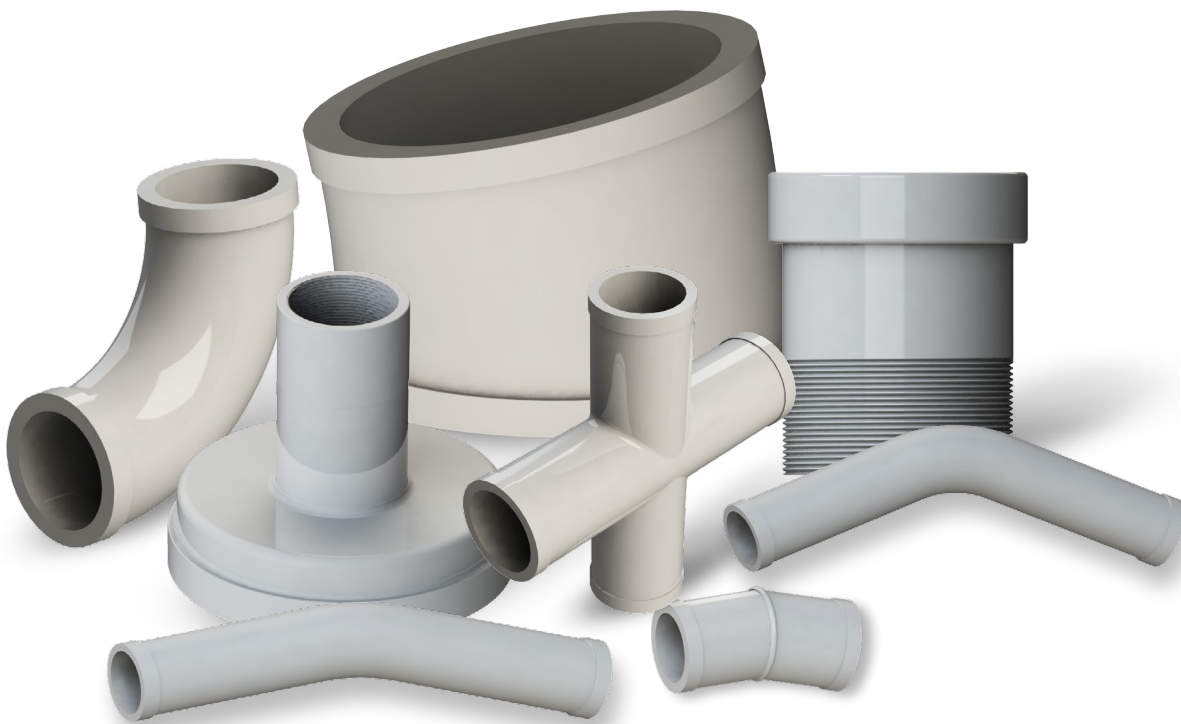
# MANIFOLDS

## MANIFOLDS

### Galvanised Manifolds

Custom galvanised manifolds made to order to suit any application. Any configuration of reducing adaptors, bends and elbows available.

All manifolds can be made with shouldered and/or BSP screwed ends.



## PNEUMATIC EQUIPMENT SALES, HIRE, REPAIR & SERVICE

- ✓ ROCK DRILLS
- ✓ AIR LEGS
- ✓ MESH MUNCHERS
- ✓ RIB DRILLS
- ✓ TENSIONERS
- ✓ ALMINCO GOPHERS ROOF BOLTERS
- ✓ TELESCOPIC STOPERS
- ✓ GROUTING EQUIPMENT
- ✓ ERGONOMIC LIGHT WEIGHT HAMMERS
- ✓ DIAPHRAGM PUMPS (PUMP / MIXER / MOTOR)
- ✓ FULL RANGE OF CONSUMABLES TO SUIT

### EQUIPMENT REPAIR & SERVICE

#### YOU CAN DEPEND ON

**QUARRY MINING** is committed to giving you a complete, professional pneumatic equipment maintenance and repair service.

With an excellent reputation as troubleshooters and for the rapid service and repair of pneumatic equipment, fixing breakdowns and keeping your fleet maintained are our number one priority.

We know that something as simple as a valve or hose can put your entire operation at risk and we want you to experience as little downtime as possible. We understand that these things can halt operations until fixed and we do our best to ensure your machinery is back in proper working order, and fast.

### REGULAR EQUIPMENT SERVICE

#### WITH FULL HISTORY LOGS

We work to limit machinery down-time which can cost you money, aim to solve the problem in the quickest turnaround and pride ourselves on getting it right the first time, every time.

We do this by providing a fully documented history log of each piece of equipment serviced.

- ✓ SERVICE AND REPAIRS TO ALL SMALL PNEUMATIC TOOLS AND PUMPS.
- ✓ MODERN, FULLY EQUIPPED SERVICE CENTRE
- ✓ HIGHLY EXPERIENCED AND TRAINED TECHNICIANS
- ✓ SMALL TO MEDIUM FABRICATION



# ALMINCO

## MINING EQUIPMENT

### SALES & SPARES

**QUARRY MINING** is a manufacturer and supplier of Australian made drilling products for coal mines and tunnelling projects.

We are an ISO9001 accredited company, with a commitment to quality products and superior customer service.

Our team of expert staff are available to go onsite to provide technical advice and customise drilling solutions to meet specific job and site requirements.

## PNEUMATIC EQUIPMENT

### HIRE & ACCESSORIES

Our range includes Gopher roof bolters, eagle rib drills, mesh munchers, rock drills and airlegs, stopers, chipping hammers and grout pumps and bowls. All pneumatic equipment is for sale or hire for as little as one day, or indefinitely. We offer a full service, maintenance and repair facility.

An extensive range of hoses, valves and fittings compliment our drilling consumables and pneumatic equipment. Items include all hose fittings and camlocks, oil bottles, rockdrill oil, scaling bars, whipchecks and valves for water and grout control.



PNEUMATIC EQUIPMENT SERVICES

**EXPERTISE YOU CAN DEPEND ON**

# VENT BANDS

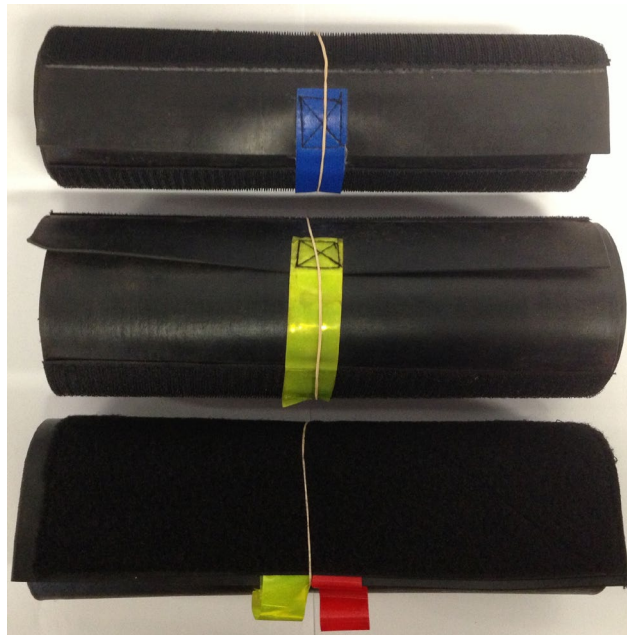
## VENT BANDS

Underground approved FRAS rubber vent bands for underground ventilation systems.

- Available in both round and oval bands.
- Assembled with durable velcro pads stitched on each end for quick setup and removal.
- Complete with a colour coded tag for easy size and style identification.

### VENT BANDS

Part Number	Vent Shape	Vent Diameter	Length	Tag Colour
VB-06120-2490X300-R	Oval	612 mm	2490 mm	Red
VB-0612R-2145X300-G	Round	612 mm	2145 mm	Green
VB-0612R-2490X450-P	Round	612 mm	2490 mm	Pink
VB-0618R-2070X300-G	Round	618 mm	2070 mm	Green
VB-0650R-2143X300-YR	Round	650 mm	2143 mm	Yellow/Red
VB-07100-2970X300-Y	Oval	710 mm	2970 mm	Yellow
VB-0710R-2525X300-B	Round	710 mm	2525 mm	Blue
VB-0762R-2600X300-Y	Round	762 mm	2600 mm	Yellow
VB-0900R-3100X300-W	Round	900 mm	3100 mm	White
VB-1220R-4020X300-W	Round	1220 mm	4020 mm	White



# CABLE STRAPS

## UNDERGROUND APPROVED CABLE STRAPS

- Complete with a 40x12 mm hook on each end
- Colour coded for easy length identification
- Durable double stitching
- 150 kg WLL (Proof Tested to 300 kg)

### CABLE STRAPS

Part Number	Length	Colour
CAB-ST-0450	450 mm	Green
CAB-ST-0500	500 mm	Red
CAB-ST-0600	600 mm	White
CAB-ST-1200	1200 mm	Blue





# QUARRY MINING

**& CONSTRUCTION EQUIPMENT PTY LTD**

## **New South Wales**

9/14 Yangan Drive,  
Beresfield NSW 2322

**ph:** +61 (0)2 4966 5028

**fax:** +61 (0)2 4910 9022

**e:** [orders@quarrymining.com](mailto:orders@quarrymining.com)

## **Queensland**

5/35 Iridium Drive,  
Paget QLD 4740

**ph:** +61 (0)7 4998 5295

**fax:** +61 (0)7 4805 6126

**e:** [ordersqld@quarrymining.com](mailto:ordersqld@quarrymining.com)

## ***Distribution Warehouse - Sydney***

Unit 1, No.1 Bearing Road,  
Seven Hills NSW 2147

**ph:** +61 (0) 499 707 553

**e:** [orders@quarrymining.com](mailto:orders@quarrymining.com)



QMS Certification Services

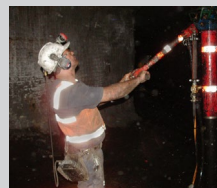
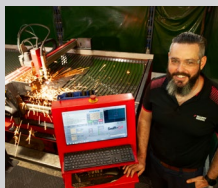


QMS Certification Services



QMS Certification Services

**CAT-IA 12 vFeb23**



**EXPERTISE YOU CAN DEPEND ON**

**WWW.QUARRYMINING.COM**