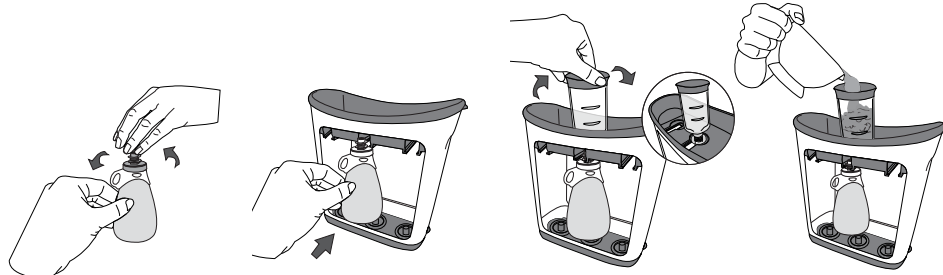
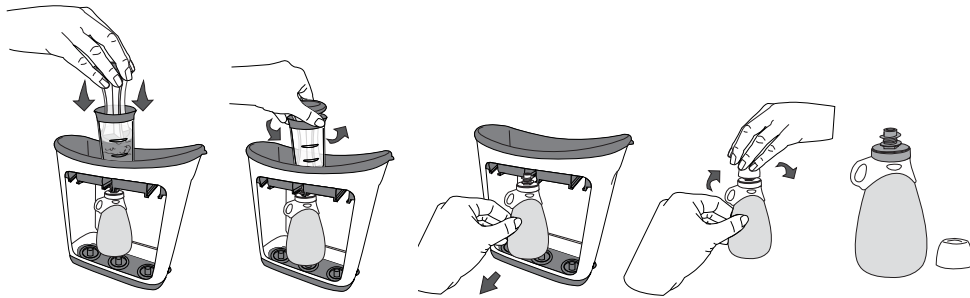


## Filling with the Squeeze Station™:

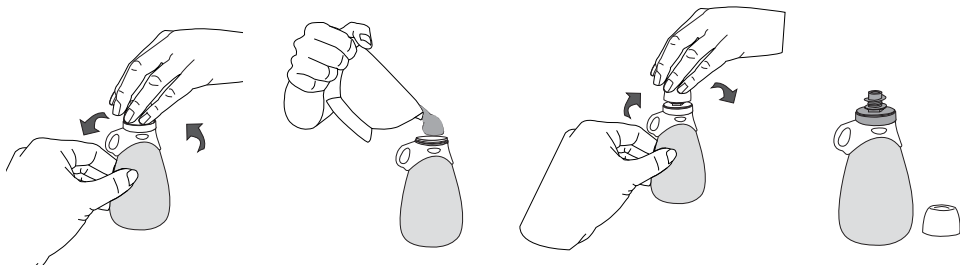


1. Unscrew spout slightly before using with the Squeeze Station™.
2. Slide pouch fully into the Squeeze Station™. Pouch will fit snugly when secure.
3. Screw the filling tube onto the pouch spout.
4. Pour purée into the filling tube.



5. Use the press to push purée into pouch.
6. Unscrew the filling tube from the pouch spout.
7. Remove pouch from the Squeeze Station™.
8. Tighten spout, then screw on cap and refrigerate.
9. When you're ready to serve, unscrew cap.

## Hand Fill:



1. Unscrew cap and spout.
2. Pour in purée.
3. Screw on spout, then cap. Refrigerate.
4. When you're ready to serve, unscrew cap.



©2012 Infantino, LLC

4920 Carroll Canyon Road, Suite 200 | San Diego, CA 92121 USA

www.infantino.com

BEFORE USING THIS PRODUCT: Review and save the Instruction Manual for future reference. Please call Infantino at 1-800-840-4916 (for US or Canada) with any questions or visit our website www.infantino.com. Made in China.

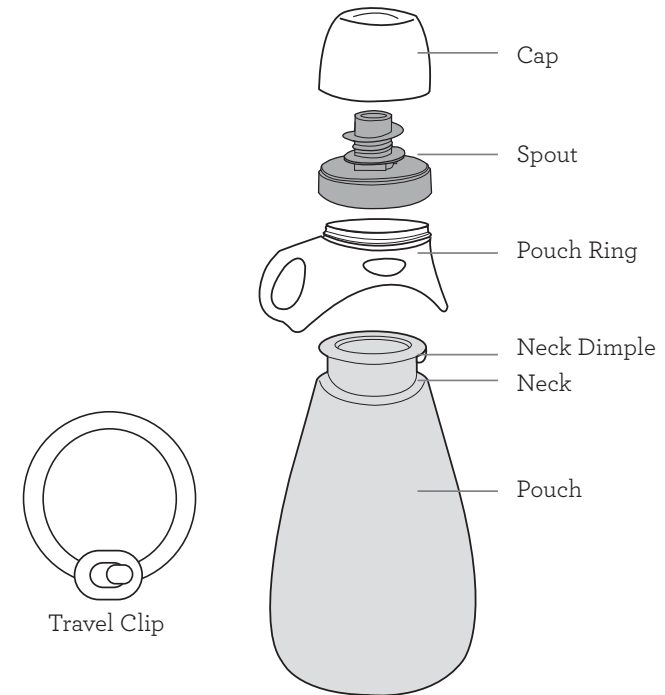
208-107

# Reusable Squeeze Pouch™ Instructions

**IMPORTANT!** KEEP INSTRUCTIONS FOR FUTURE USE. Read all instructions before assembling and using this product. Failure to follow each instruction can result in serious injury or death to your baby.

**▲ WARNING:** This product is not a toy. DO NOT leave baby unattended with product at any time. Adult supervision required. DO NOT place in freezer. DO NOT microwave. This is not a chew or teething toy. Adult assembly required.

## Reusable Squeeze Pouch™



## Care Instructions:

Wash the product thoroughly in warm soapy water (or in the top rack of a dishwasher) before using for the first time and after each use. Dry components thoroughly after washing. We recommend any bottle brush for cleaning or clean by hand.

- Fully disassemble for cleaning.
- Separate pouch from pouch ring - notice pouch dimple and pouch ring recess align during assembly.

This package includes: 1-Reusable Squeeze Pouch™ 1-Travel Clip