

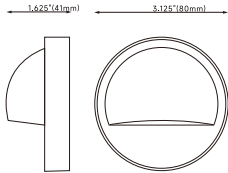


Features

- Solid cast brass construction
- Specification grade beryllium copper socket
- Premium grade direct burial cable
- Anti-Moisture Connections
- 20W max, Halogen
- Light Bronze standard finish



Product Dimensions



Package Contents

- (1) Fixture
- (2) Wire Connectors

customersupport@coloyer.com / (626) 699-4666

1

PLEASE READ BEFORE INSTALLATION

Luminaires must be installed in accordance with the National Electrical Code (NEC) and local codes. Failure to do so will void the warranty and may result in serious injury and/or damage to the luminaire. These instructions do not intend to cover all variations in installation, operation maintenance or mounting situations.

INSTRUCTIONS PERTAINING TO A RISK OR FIRE, OR INJURY TO PERSONS

IMPORTANT SAFETY INSTRUCTIONS THE LIGHTED LAMP IS HOT!!

WARNING-TO REDUCE THE RISK OR FIRE, OR INJURY TO PERSONS

customersupport@coloyer.com / (626) 699-4666

2

SAFETY WARNING

Luminaire can become very hot depending on lamp wattage used. Lens and metal around lamp can become hot enough to blister hands. Particular care should be taken not to locate luminaires where small children can reach them if high wattage lamps are used.

- Turn off/unplug and allow to cool before replacing lamp.
- Lamps get hot quickly!
Contact only switch/plug when turning on.
- Do not touch hot lens, guard or enclosure.
- Keep lamp away from material that may burn.
- Do not touch the lamp at any time. Use a soft cloth.
Oil from skin may amage lamp.
- Do not operate luminaire with a missing or damaged parts.
- Luminaires shall not be installed within 10 feet(3m) of a pool, spa or fountain.
- Do not use tungsten halogen lamps unless the luminaire is marked for halogen use.

customersupport@coloyer.com / (626) 699-4666

3

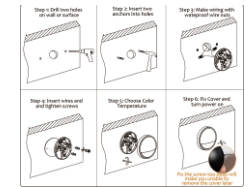
Transformer Installation

INSTALLATION OF TRANSFORMERS:

- *Remove the hinge type cover door easily by pulling up on enclosure.
- *Pull the 6 foot power cord plug out of the enclosure through the block notch, on the right side of the enclosure's interior.
- *Choose a flat and solid wall to mount the transformer. The bottom of the enclosure should be at least 12" above the finish floor with wire terminal block facing down. The location of the transformer should be less than 6 feet from 120 volt supply circuit, protected by a class "A" GFCI.
- *Align the transformer horizontally and parallel to finish floor. Mark the top and bottom mounting brackets keyhole slots and predrill holes on marks of keyhole slots. Use anchor bolts supplied and insert inside the holes. Secure the transformers keyhole slots on top mounting bracket and bottom by using supplied screws into the anchor bolts.

CONNECTION OF MAIN CABLE TO TRANSFORMER:

- *Remove the bottom plate from transformer
- *Use a screwdriver and loosen the COM tap and proper low voltage taps(12,13,14, 15 Volt) terminal block in order to connect the main cable.
- *Run the main cable, through one of the knockouts of bottom plate. Separate the wires of main cable and strip both for about 1"
- *Connect one wire to COM tap and the other to proper low voltage tap. Make sure both are fully inserted into terminal block.
- *Secure both wires to both taps by tightening the COM tap and low voltage taps with a screwdriver.
- *If plug-in timer is not used, connect the timer cable into the receptacle inside the enclosure. If photocell is not used, plug in photocell socket with jumper supplied with transformer.
- *Replace the bottom plate and cover door on the transformer.



customersupport@coloyer.com / (626) 699-4666

4

THANK YOU FOR CHOOSING COLGER

If you have any installation problems or need help
Call us! (626) 699-4666

Please do not hesitate to contact us:

✉ customersupport@coloyer.com

Fixture Installation

Step 1

Make sure that the power is turned OFF before installing or servicing this fixture.

Step 2

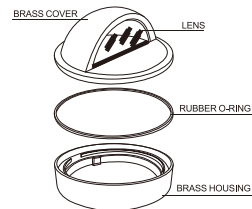
Remove the shroud of the fixture and insert MR16 lamp into the lamp socket.

Step 3

Screw the fixture onto the stake. Lay out fixtures at desired locations. Any combination of lights is acceptable as long as the total wattage does not exceed 85% percent of the power supply transformer.

Step 4

Remove the sleeves from the pre-stripped lead wire. Use the wire connectors to connect lead wire to the main power supply cord.



customersupport@coloyer.com / (626) 699-4666

5

Care & Maintenance

- Before attempting to clean the fixture, disconnect power by turning the breaker off or removing the fuse from the box.
- To clean the fixture, use a dry or slightly damp, clean cloth.
- DO NOT use any cleaner with chemicals solvents or harsh abrasives.

Troubleshooting

If all lights are not working properly

- Check if the power is on.
- Make sure the fixture and transformer are connected properly and the photocell is not receiving any light from other light source such as street light.
- Note: There is a 10-second delay when the photocell starts working.

If partial lights are not working properly

- Check all connections between lights.

Warranty

Lifetime warranty(Fixture only)

We warrants this light fixture against defects in material and workmanship for lifetime from the date purchase. If within this period the product is found to be defective in material or workmanship, this product must be returned with a copy of receipt as a proof purchase to the original place of purchase. The retailer will, at its option, repair, replace, or refund the purchase price to the original purchaser. Warranty does not include damages due to misuse, accidents, improper handling and /or installation, incidental, or consequential damages. As some states do not allow exclusions or limitations on the implied warranty, the above exclusions and limitations may not apply. This warranty gives you specific rights and you may also have other rights that vary from state to state.

customersupport@coloyer.com / (626) 699-4666

6



USER MANUAL COD401B Deck Light



3979 East Guasti Rd Unit A, Ontario, CA 91761

www.coloyer.com