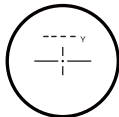


CALLAWAY 350TL LASER RANGEFINDER

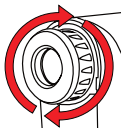
QUICK START

HOW TO USE

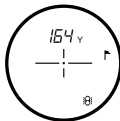
1. While looking through the **Eye Piece**, **TOUCH & HOLD** the **PowerPad™**. The rangefinder is now powered on.



2. To focus/increase clarity, use the **Diopter Adjustment** by turning the **Eye Piece**.



3. Continue looking through the **Eye Piece**, aim the **Center Dot** inside the **Crosshairs** at your target and **TAP & RELEASE** the **PowerPad™** on top to shoot a distance. The device will vibrate, and the distance will be displayed on the **LCD Screen**.



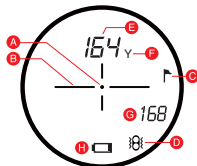
RANGEFINDER DIAGRAM

- A. Eye Piece
- B. Diopter Adjustment
- C. PowerPad™
- D. Mode Pad
- E. Slope Switch
- F. Battery Door



INTERNAL DISPLAY

- A. Center Dot
- B. Crosshairs
- C. P.A.T. Mode Indicator
- D. Pulse Indicator
- E. Distance
- F. Unit of Measure
- G. Slope Adjusted Distance
- H. Low Battery



To view complete user manual visit: www.CallawayDMD.com/product-support

Unit of Measure - To change the unit of measure from Yards to Meters, **TOUCH & HOLD** the top **PowerPad™** until the unit turns on. Then **TOUCH & HOLD** the **Mode Pad** on the left side grip (**MODE**) until you see **UNIT** on the LCD Display. **TOUCH & HOLD** the top **PowerPad™** until you see the M switch to Y.

SLOPE FUNCTION

To activate **SLOPE**, pull the red ring around the eye piece out. You will see 4 dashes appear on the **LCD Screen** below the center **Crosshair**.

MEASUREMENT MODES

TOUCH & HOLD the **PowerPad™** to turn the laser ON. Then, **DOUBLE TAP** the **PowerPad™** to switch between Standard and & P.A.T. Mode.

- 1. Standard Mode** - **No Icon** will appear on the right side of the display.
 - Standard Mode is recommended when measuring distances to larger objects. To quickly range targets, **TAP & RELEASE** the **PowerPad™**.
- 2. P.A.T. with Pulse Technology**
 - P.A.T. Mode is best used when measuring the distance to a pin or smaller objects. Device will provide a short vibration to confirm that the laser has locked on to the pin/object. When P.A.T. Mode is activated, the Flagstick icon will appear on the right side and the Pulse icon will appear on the bottom right side of the LCD display.

PLEASE NOTE:

Since the 350TL utilizes the **PowerPad™** instead of a traditional button, we highly recommend the user spend 10-15 minutes experiencing the difference before going to the golf course. Spend some time getting used to the pressure needed to fire the laser. You will find the **PowerPad™** is very responsive and does not require that much pressure at all.

