



**HYFIX**  
SPATIAL INTELLIGENCE

# Triple-Band GNSS MiniPCle MobileCM Upgrade Card

## DEVICE SUMMARY:

- Easily Upgrades a Dual-Band MobileCM GNSS Base-Station to Triple-Band GNSS Base-Station
- Installs in 10 minutes
- Increase GEODNET Token Rewards by up to 100%



## MobileCM Upgrade Option:

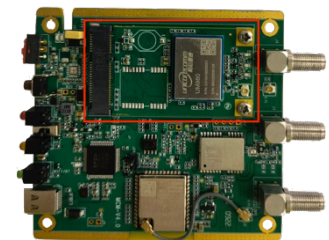
The MobileCM triple-band MiniPCle card easily upgrades dual-band MobileCM base-stations for triple-band operation. Dual-band MobileCM stations receive the L1 and L5 signals along with the international constellation equivalent signals. Using the triple-band MiniPCle upgrade card, the MobileCM is upgraded to track all three primary bands L1, L2 and L5. Installing the MiniPCle increases the total potential tracked bands from 6 to 12, and therefore it can earn up to double the rewards of the standard dual-band miner.

The upgrade card is a state-of-the-art Geodetic grade GNSS receiver module, capable of millimeter measurement precision. The receiver features over 1000 satellite signal tracking channels. The MiniPCle is very affordable and increases the standard Dual-Band MobileCM power consumption by less than 1W. The card is easily installed by removing the base-station faceplate, sliding out the primary PCB drawer, and installing the MiniPCle Card. Following a firmware upgrade, the MobileCM will immediately begin triple-band operation and is eligible for increased token rewards. Note the, primary GNSS Antennae is switch to the new GNSS+ Port (formerly LoRa port).

## MiniPCle Specification:

Triple-Band Geodetic Grade GNSS Receiver	
GNSS	
Channels	Over 1000 Tracking Channels
GPS/QZSS	L1C/A, L1C, L2P (Y), L2C, L5
Galileo	E1, E5a, E5b
Glonass	L1, L2
BeiDou	B1I, B2I, B3I, B1C, B2a, B2b
Physical & Electrical	
Power	<1W, MiniPCle

## Installed MiniPCle:



## Ordering Information:

Model	Description
MPC150	MobileCM™ Triple Band MiniPCle Upgrade

## About HYFIX.AI:

HYFIX provides simple easy-to-use precise positioning solutions.