

CONTENDER™ KINGPINLESS 310 & 410 Family of HD Products

Proudly
Made in the **USA**

85% of caster failures are due to Kingpin failure. **Contender™ Kingpinless** casters eliminate Kingpin failure.

- Laser Technology
- Forged Raceway
- Ergonomic, Perfect for Towing
- Dual Wheel and Spring-Load options available
- Laser cut 3/8" thick legs
- Impact and Shock durability
- Zinc Plated, plus Clear Coat
- Capacity up to 5,400 pounds
- Heat Treated AISI 1045 steel



410 Series Swivel

EXPLORE THE
310/410 FAMILY TODAY.

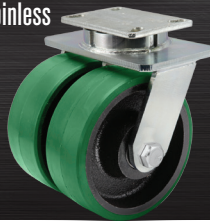


310 Swivel
Integrated PLB Brake



410 Rigid
Poly Cam Brake

315 Dual Wheel
Kingpinless



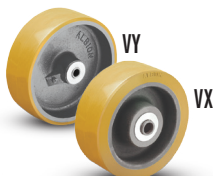
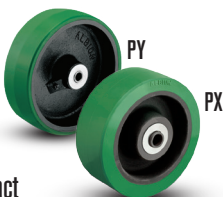
S410 Swivel
Spring Loaded



310 Swivel
With Toe Guard
and PLB Brake



Trionix™ High Impact
Polymer Wheel



Ask us about
the Stainless
120/330 Series

www.albioncasters.com
800-835-8911

ALBION
the caster experts



© 2017 | Colson Group USA