



Select Pemco E-Line casters are NSF listed.

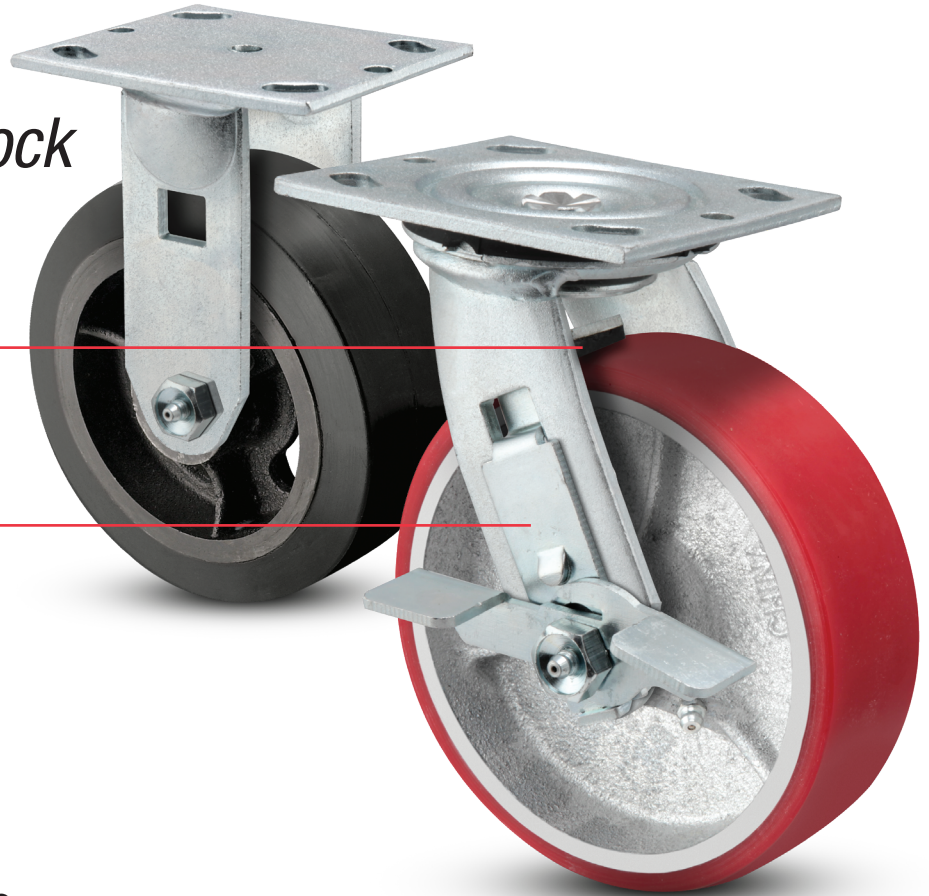
PEMCO®

E-LINE™ *Economical & In-Stock*

*2" Wide Casters, Wheels
and Accessories*

**Rubber Brake Grip for
Positive Lock, Even on
Hard Wheels!**

**Internal Brake Arm Stays
Protected From Forklifts
and Other Equipment!**



**Now Featuring More
USA-Made Wheels**



**DOWNLOAD
3D CAD MODELS!**

See back cover for details.

www.PemcoCasters.com/E-Line

E-LINE

The E-line is an economical lineup of casters and wheels designed and mass-produced for a range of medium-duty applications with load requirements ranging from 300 to 1,250 lbs. per caster. From shop carts and containers, to platform and lumber carts, the E-Line is your most competitive and in-stock 2" wide solution.

- The industry's most popular 2" wide caster sizes, wheel options, brake configurations, and accessories.
- Capacities up to 1,250 lbs. per caster.
- Double ball raceways for smooth swiveling action.
- 1/4" thick steel leg construction on swivel and rigid casters; 3/16" construction on total lock casters.
- 5/8" diameter permanent rivet kingpin.
- RoHS compliant industrial zinc finish for corrosion resistance.
- 1/2" hollow axle with grease zerk and lock nut.
- Total lock permanently integrated into swivel fork on total lock models.

Swivel Brake Options



Tread Lock Brake (TBK)



Total Lock
Locks and unlocks both wheel and swivel with a toe tap.



Short Pedal - 5" Length Cam Brake* (CAMS)



Long Pedal - 7" Length Cam Brake*† (CAML)



Change to Wheel Face Brake*‡ (WFB)

*Roller Bearing required for CAM Brakes. †Not compatible with 4" and 5" rigid caster models. ‡ Available by special order. Minimums may apply.

Rigid Brake Options



Tread Lock Brake (TBK)



Short Pedal - 5" Length Cam Brake* (CAMS)



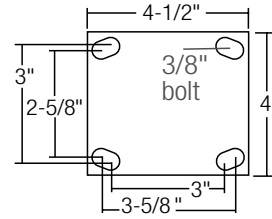
Long Pedal - 7" Length Cam Brake*† (CAML)



Change to Wheel Face Brake*‡ (WFB)

*Roller Bearing required for CAM Brakes. †Not compatible with 4" and 5" rigid caster models. ‡ Available by special order. Minimums may apply.

Top Plate Dimensions



Wheel Options

POLYURETHANE TREAD WHEELS



Thermo-Urethane (Maroon/Grey)



Mold-on Poly



PolyKat™ Thermo-Urethane

RUBBER AND THERMO-RUBBER CUSHION WHEELS



Thermo-Rubber Flat



Thermo-Rubber Donut



Mold-on Rubber

HARD TREAD WHEELS



Phenolic



Polypropylene HD



Cast Iron

See wheel features and descriptions on page 4.

Bearing Options



Roller Standard (R)



Pedestal Precision Ball (B)



Delrin® (D)



Precision Ball (P8)

To specify the optional Pedestal Precision Ball (B) or Delrin (D) bearing in a caster, please add B or D to the end of the Part # (see following pages). To order bearing alone, please see Page 5.

Standard only on PolyKat™ Thermo-Urethane wheels.

Retainer Washer Option

Standard



Plastic Retainer Washer

Optional



Steel Retainer Washer (SW)

Plastic retainer washers come standard on wheels with roller bearings; to order optional steel retainer washers add SW to the end of the part#. Example ES6X2CIRSW

Sealed Raceway Option

Rubber raceway seals keep dirt out and lube in for longer caster life. Add RS after ES for free swivel models (example: ESRS6X2TPR). Seals are not available for total lock models.



Caster Models and Specifications



Wheel Dia.	Tread Width	Wheel Type	Load Capacity (lbs)	Mount Height	Swivel Radius	Standard Bearing	Swivel Caster Part #	Rigid Caster Part #	Total Lock Brake	Caster Bearing Options	Other Brake Options
4"	2"	PolyKat™ Thermo-Urethane	600	5-5/8"	Swivel Models 3-3/8"	Precision Ball	ES4X2PKTP8	ER4X2PKTP8	ET4X2PKTP8	N/A	(+) TBK
		Thermo-Urethane (Maroon/Grey)	500	5-5/8"		Roller	ES4X2TUM	ER4X2TUM	ET4X2TUM	(+) B, D	(+) TBK, CAMS
		Mold-on Poly	800	5-5/8"		Roller	ES4X2MOP	ER4X2MOP	ET4X2MOP	(+) B	
		Mold-on Rubber	400	5-5/8"		Roller	ES4X2MOR	ER4X2MOR	ET4X2MOR	(+) B	
		Thermo-Rubber (Flat)	300	5-5/8"		Roller	ES4X2TPR	ER4X2TPR	ET4X2TPR	(+) B, D	
		Thermo-Rubber (Donut)	300	5-5/8"		Roller	ES4X2TPD	ER4X2TPD	ET4X2TPD	(+) B, D	
		Phenolic	800	5-5/8"		Roller	ES4X2PHN	ER4X2PHN	ET4X2PHN	(+) B, D	
		Polypropylene HD	500	5-5/8"		Roller	ES4X2POD	ER4X2POD	ET4X2POD	(+) B, D	
		Cast Iron	800	5-5/8"		Roller	ES4X2CIR	ER4X2CIR	ET4X2CIR	(+) B	
5"	2"	PolyKat™ Thermo-Urethane	800	6-1/2"	Swivel Models 4"	Precision Ball	ES5X2PKTP8	ER5X2PKTP8	ET5X2PKTP8	N/A	
		Thermo-Urethane (Maroon/Grey)	600	6-1/2"		Roller	ES5X2TUM	ER5X2TUM	ET5X2TUM	(+) B, D	(+) TBK, CAMS, CAML
		Mold-on Poly	1100*	6-1/2"		Roller	ES5X2MOP	ER5X2MOP	ET5X2MOP	(+) B	
		Mold-on Rubber	400	6-1/2"		Roller	ES5X2MOR	ER5X2MOR	ET5X2MOR	(+) B	
		Thermo-Rubber (Flat)	350	6-1/2"		Roller	ES5X2TPR	ER5X2TPR	ET5X2TPR	(+) B, D	
		Thermo-Rubber (Donut)	350	6-1/2"		Roller	ES5X2TPD	ER5X2TPD	ET5X2TPD	(+) B, D	
		Phenolic	1000*	6-1/2"		Roller	ES5X2PHN	ER5X2PHN	ET5X2PHN	(+) B, D	
		Polypropylene HD	650	6-1/2"		Roller	ES5X2POD	ER5X2POD	ET5X2POD	(+) B, D	
		Cast Iron	1000*	6-1/2"		Roller	ES5X2CIR	ER5X2CIR	ET5X2CIR	(+) B	
6"	2"	PolyKat™ Thermo-Urethane	1000*	7-1/2"	Swivel Models 4-3/4"	Precision Ball	ES6X2PKTP8	ER6X2PKTP8	ET6X2PKTP8	N/A	
		Thermo-Urethane (Maroon/Grey)	720	7-1/2"		Roller	ES6X2TUM	ER6X2TUM	ET6X2TUM	(+) B, D	(+) TBK, CAMS, CAML
		Mold-on Poly	1200*	7-1/2"		Roller	ES6X2MOP	ER6X2MOP	ET6X2MOP	(+) B	
		Mold-on Rubber	550	7-1/2"		Roller	ES6X2MOR	ER6X2MOR	ET6X2MOR	(+) B	
		Thermo-Rubber (Flat)	500	7-1/2"		Roller	ES6X2TPR	ER6X2TPR	ET6X2TPR	(+) B, D	
		Thermo-Rubber (Donut)	500	7-1/2"		Roller	ES6X2TPD	ER6X2TPD	ET6X2TPD	(+) B, D	
		Phenolic	1200*	7-1/2"		Roller	ES6X2PHN	ER6X2PHN	ET6X2PHN	(+) B, D	
		Polypropylene HD	700	7-1/2"		Roller	ES6X2POD	ER6X2POD	ET6X2POD	(+) B, D	
		Cast Iron	1200*	7-1/2"		Roller	ES6X2CIR	ER6X2CIR	ET6X2CIR	(+) B	
8"	2"	PolyKat™ Thermo-Urethane	1200*	9-1/2"	Swivel Models 6-1/4"	Precision Ball	ES8X2PKTP8	ER8X2PKTP8	ET8X2PKTP8	N/A	
		Thermo-Urethane (Maroon/Grey)	800	9-1/2"		Roller	ES8X2TUM	ER8X2TUM	ET8X2TUM	(+) B, D	(+) TBK, CAMS, CAML
		Mold-on Poly	1250*	9-1/2"		Roller	ES8X2MOP	ER8X2MOP	ET8X2MOP	(+) B	
		Mold-on Rubber	600	9-1/2"		Roller	ES8X2MOR	ER8X2MOR	ET8X2MOR	(+) B	
		Thermo-Rubber (Flat)	600	9-1/2"		Roller	ES8X2TPR	ER8X2TPR	ET8X2TPR	(+) B, D	
		Thermo-Rubber (Donut)	600	9-1/2"		Roller	ES8X2TPD	ER8X2TPD	ET8X2TPD	(+) B, D	
		Phenolic	1250*	9-1/2"		Roller	ES8X2PHN	ER8X2PHN	ET8X2PHN	(+) B, D	
		Polypropylene HD	900	9-1/2"		Roller	ES8X2POD	ER8X2POD	ET8X2POD	(+) B, D	
		Cast Iron	1250*	9-1/2"		Roller	ES8X2CIR	ER8X2CIR	ET8X2CIR	(+) B	

*Maximum weight capacity of total lock brake casters is 900 lbs. each.

Brake and Bearing Ordering Examples:

To order with an optional brake, add Brake Code to end of Swivel or Rigid Caster Part #. Example: ES6X2TPRTBK

To order with an optional bearing, add Bearing Code to end of Part #. Example: ET5X2TPDB

To order with an optional bearing and brake, add Bearing Code + Brake Code to end of Swivel or Rigid Part #. Example: ER8X2TPUBTBK



† Swivel Radius: Brake Casters

Wheel Dia.	Brake Types (Reference Page 2)				
	WFB	TBK	CAMS	CAML	Total Lock
4"	6-13/32"	3-5/8"	4-23/32"	N/A	5-7/16"
5"	7-1/32"	4"	5"	6"	5-13/16"
6"	7-21/32"	4-3/4"	5-1/8"	6-5/32"	6"
8"	9-1/16"	6-1/4"	6-1/4"	6-5/8"	6-3/8"

† Note: Swivel radius shown for standard swivel models. Some brake models will have extended swivel radius; see chart below.

Wheel Features

Thermo-Urethane



- Polyurethane tread mechanically locked to polypropylene core.
- Available in red on black or maroon on grey.
- Attractive, all-purpose wheel.
- Good in wet applications, resistant to most chemicals.

Durometer: 95 Shore A (±5)

Mold-on Poly



- Polyurethane bonded to cast iron core.
- High load capacity.
- Good roll-ability and floor protection.

Durometer: 95 Shore A (±5)

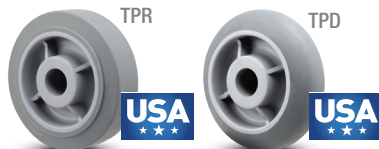
PolyKat™ Thermo-Urethane



- Premium Polyurethane on Glass reinforced Polypropylene core.
- Maintenance-free, sealed precision ball bearings.
- Excellent roll-ability and floor protection.
- High load capacity and impact strength.
- Good in wet applications, resistant to most chemicals.

Durometer: 55 Shore D (±5)

Thermo-Rubber Flat and Donut



- Non-marking tread.
- Good floor protection.
- Quiet, shock-absorbing ride.
- Good in wet environments, resistant to most chemicals.

Durometer: 90 Shore A (±5)

Mold-on Rubber



- Rubber bonded to cast iron core.
- Quiet, shock-absorbing ride.

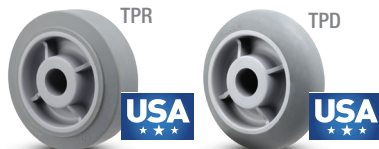
Durometer: 85 Shore A (±5)

Wheels Only Options

Wheel Dia.	Tread Width	Wheel Type	Load Capacity (lbs)	Standard Bore	Wheel Part # (Plain bore)	Bearing Options
4"	2"	PolyKat™ Thermo-Urethane	600	1/2"	WH4X2PKTP8	Prec. Ball
		Thermo-Urethane (Maroon/Grey)	500	1-3/16"	WH4X2TUM19	(+) B, D, R
		Mold-on Poly	800	1-3/16"	WH4X2MOP19	(+) B, R
		Mold-on Rubber	400	1-3/16"	WH4X2MOR19	(+) B, R
		Thermo-Rubber (Flat)	300	1-3/16"	WH4X2TPR19	(+) B, D, R
		Thermo-Rubber (Donut)	300	1-3/16"	WH4X2TPD19	(+) B, D, R
		Phenolic	800	1-3/16"	WH4X2PHN19	(+) B, D, R
		Polypropylene HD	500	1-3/16"	WH4X2POD19	(+) B, D, R
		Cast Iron	800	1-3/16"	WH4X2CIR19	(+) B, R
5"	2"	PolyKat™ Thermo-Urethane	800	1/2"	WH5X2PKTP8	Prec. Ball
		Thermo-Urethane (Maroon/Grey)	600	1-3/16"	WH5X2TUM19	(+) B, D, R
		Mold-on Poly	1100	1-3/16"	WH5X2MOP19	(+) B, R
		Mold-on Rubber	400	1-3/16"	WH5X2MOR19	(+) B, R
		Thermo-Rubber (Flat)	350	1-3/16"	WH5X2TPR19	(+) B, D, R
		Thermo-Rubber (Donut)	350	1-3/16"	WH5X2TPD19	(+) B, D, R
		Phenolic	1000	1-3/16"	WH5X2PHN19	(+) B, D, R
		Polypropylene HD	600	1-3/16"	WH5X2POD19	(+) B, D, R
		Cast Iron	1000	1-3/16"	WH5X2CIR19	(+) B, R
6"	2"	PolyKat™ Thermo-Urethane	1000	1/2"	WH6X2PKTP8	Prec. Ball
		Thermo-Urethane (Maroon/Grey)	720	1-3/16"	WH6X2TUM19	(+) B, D, R
		Mold-on Poly	1200	1-3/16"	WH6X2MOP19	(+) B, R
		Mold-on Rubber	550	1-3/16"	WH6X2MOR19	(+) B, R
		Thermo-Rubber (Flat)	500	1-3/16"	WH6X2TPR19	(+) B, D, R
		Thermo-Rubber (Donut)	500	1-3/16"	WH6X2TPD19	(+) B, D, R
		Phenolic	1200	1-3/16"	WH6X2PHN19	(+) B, D, R
		Polypropylene HD	600	1-3/16"	WH6X2POD19	(+) B, D, R
		Cast Iron	1200	1-3/16"	WH6X2CIR19	(+) B, R
8"	2"	PolyKat™ Thermo-Urethane	1200	1/2"	WH8X2PKTP8	Prec. Ball
		Mold-on Poly	1250	1-3/16"	WH8X2MOP19	(+) B, R
		Thermo-Urethane (Maroon/Grey)	800	1-3/16"	WH8X2TUM19	(+) B, D, R
		Mold-on Rubber	600	1-3/16"	WH8X2MOR19	(+) B, R
		Thermo-Rubber (Flat)	600	1-3/16"	WH8X2TPR19	(+) B, D, R
		Thermo-Rubber (Donut)	600	1-3/16"	WH8X2TPD19	(+) B, D, R
		Phenolic	1250	1-3/16"	WH8X2PHN19	(+) B, D, R
		Polypropylene HD	900	1-3/16"	WH8X2POD19	(+) B, D, R
		Cast Iron	1250	1-3/16"	WH8X2CIR19	(+) B, R

Above wheels come with 1-3/16" plain bore – NO BEARING. To add bearings, replace 19 with desired bearing code: Pedestal Precision Ball **B**, Delrin **D** (includes bushing) D75 (3/4" I.D. no bushing) or Roller **R** (includes bushing) R75 (3/4" I.D. no bushing). Plastic retainer washers come standard on wheels with roller bearings; to order optional steel retainer washers add **SW** to the end of the part number.

Thermo-Rubber Flat and Donut



- Non-marking tread.
- Good floor protection.
- Quiet, shock-absorbing ride.
- Good in wet environments, resistant to most chemicals.

Durometer: 90 Shore A (±5)

Phenolic



- High load capacity.
- Hard tread, rolls easily.
- Excellent impact strength.
- Abrasion-resistant.

Durometer: 90 Shore D (±5)

Polypropylene HD



- New ribbed design for added strength.
- Increased load capacities.
- U.S.A.-Made.

Durometer: 70 Shore D (±5)

Cast Iron



- Solid one-piece construction.
- High load capacity.
- Hard tread, rolls easily.
- Excellent impact strength.
- For high temperature up to 600°F – must use optional steel retainer washers (**SW**).

Mold-on Rubber



- Rubber bonded to cast iron core.
- Quiet, shock-absorbing ride.

Durometer: 85 Shore A (±5)

Thread Guard Options



Thread Guards help keep entangling debris out of the axle and wheel bearing for a longer caster life. To order: Add **TG1** for metal or **TG2** for plastic to the end of the caster part number; TG2 option only available on TPR & TPD wheels in 5", 6", and 8" diameters.

E-LINE Components

Swivel and Rigid Rigs



Wheel Dia.	Tread Width	*Load Capacity (lbs)	Mount Height	Swivel Caster Part #	Rigid Caster Part #
4"	2"	1250	5-5/8"	RIG4X2ES	RIG4X2ER
5"	2"	1250	6-1/2"	RIG5X2ES	RIG5X2ER
6"	2"	1250	7-1/2"	RIG6X2ES	RIG6X2ER
8"	2"	1250	9-1/2"	RIG8X2ES	RIG8X2ER



Total Lock Rigs

Wheel Dia.	Tread Width	*Load Capacity (lbs)	Mount Height	Swivel Radius	Part #
4"	2"	900	5-5/8"	5-7/16"	RIG4X2EST
5"	2"	900	6-1/2"	5-13/16"	RIG5X2EST
6"	2"	900	7-1/2"	6"	RIG6X2EST
8"	2"	900	9-1/2"	6-3/8"	RIG8X2EST

*Some wheels have lower load capacities than the rig; please reference page 3 for the assembled load capacity for each wheel type.

Brake Kits

All brake kits include axle, nut, and necessary hardware to install on swivel or rigid rigs.

Tread Lock Brake (TBK)



TBK4X2E	4" models
TBK5X2E	5" models
TBK6X2E	6" models
TBK8X2E	8" models

Long Pedal Cam Brake 7" (CAML)

Works with only roller bearing models. Fits 5", 6", and 8" E-Line models.



CAMXX2L	Comes with custom spanner bushing (roller bearing required)
---------	---

Short Pedal Cam Brake (5") (CAMS)

Works with only roller bearing models. Fits all caster sizes.



CAMXX2S	Comes with custom spanner bushing (roller bearing required)
---------	---

Floor Lock Options

Single Pedal Floor Locks

Designed to hold your portable equipment in a desired location.



Wheel Dia.	Caster Mtg. Ht.	Retracted Clearance	Approximate Weight (lbs)	Floor Lock #
4"	5-5/8"	3/4"	3-1/4	FL-4E
5"	6-1/2"	3/4"	3-1/2	FL-5E
6"	7-1/2"	3/4"	3-3/4	FL-6E
8"	9-1/2"	3/4"	4	FL-8E

Double Pedal Floor Locks

Adaptable to all types of portable equipment, the double pedal floor lock allows for easier floor lock engagement.



Wheel Dia.	Caster Mtg. Ht.	Retracted Clearance	Approximate Weight (lbs)	Floor Lock #
4"	5-5/8"	1"	3-7/8	FLOCKE40
5"	6-1/2"	1"	4	FLOCKE50
6"	7-1/2"	1-3/8"	4-1/2	FLOCKE60
8"	9-1/2"	1-1/4"	4-3/4	FLOCKE80

Hardware *(All hardware parts sold per piece, not sets)*



Axle (Zerk)
1/2-13 x 3.375

AXLEZRKEX2



Nut
1/2-13

AXLENUTEX2



Spanner bushing
1/2 x 3/4 x 2-7/16

SPANNEREX2



Retaining Washer (Plastic)
WHLCAPPLEX2



Retaining Washer (Steel)
WHLCAPSTEX2



Roller bearing
3/4 I.D. (Use With Bushing For 1/2 I.D.)
BRGCROLLEX2



Pedestal precision bearing
BRGPBALLEX2



Flanged Delrin bearing
3/4 I.D. (Use With Bushing For 1/2 I.D.)
BRGDELRNEX2

Raceway Seals

Upper and Lower seals available on swivel caster models (sold as set). Seals are not available for total lock models.



RCWYSEALEX2

4-Position Swivel Lock

Lock and unlock swivel for easy tracking down hallways.

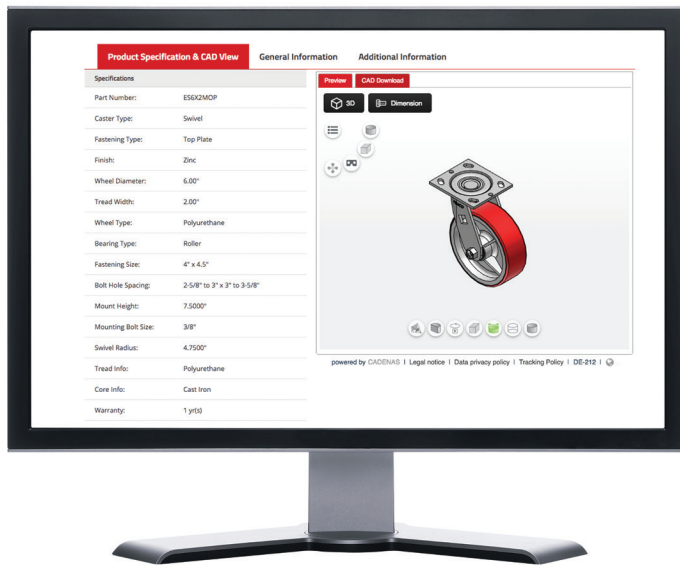


SWVLOCKX2

NEED A CAD MODEL OR QUOTE?

PEMCO®

www.PemcoCasters.com



“Caster CAD 3D” App



- Quickly configure caster models
- Download native CAD formats
- Download datasheets
- Easily share with your team



Pemco Casters

A Brand of Colson Group

800-253-0868

— A BRAND OF —
colson
GROUP

THE GLOBAL LEADER
IN CASTERS AND WHEELS.