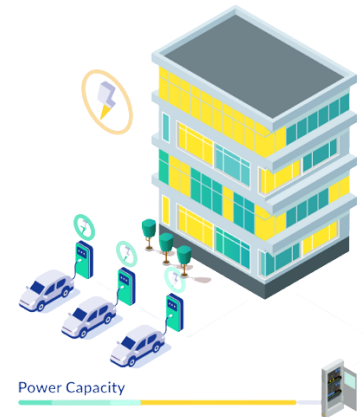


Reduce costs and protect the grid while scaling your network

Scaling an EV charging business no longer requires additional grid updates. Using the Electric Avenue EV Charging Platform dynamic load management (DLM) solution, you will be able to add an unlimited number of charging stations to your network circuits with no worries.



When do you need Dynamic Load Management (DLM)?

DLM makes sense for locations where multiple charging stations are installed, and the site has limited power capacity. With DLM, you can avoid expensive power capacity upgrades and still install the desired number of chargers at the site. DLM automatically distributes the available power dynamically and efficiently, ensuring that the grid is not overloaded and each EV is charged efficiently. DLM also enables comprehensive prioritization based on which charger is in use or even based on who is charging, allowing, for example, to prioritize subscribers over ad-hoc users. Hence, you can also create additional incentives and revenue streams for your business.

Dynamic Load Management is important for every player in the EV charging supply chain.

Electric Avenue's software DLM helps EV charging players build a robust and future-proof EV charging solution.

- Protect your local electricity grid
- Reduce investment cost without losing service quality
- Allow different user groups prioritized access or a modified pricing structure
- Generate revenue and increase the ROI of your investment



Retail & Parking



Offices



Residential Buildings

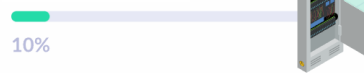


Fleet Operators

Add charging stations to a DLM Circuit and set the total limit

You can group an unlimited number of charge points in a so-called DLM circuit and apply a limit to the circuit.

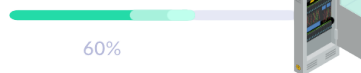
Power Capacity



Set charge point and user priorities

Define the prioritization rules based on the user groups or based on which charging station is being used.

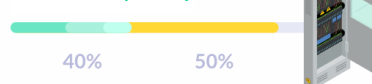
Power Capacity



Connect with a building/energy management system

Electric Avenue's API allows for integration with the building/energy management system on-site for automated limit adjustments.

Power Capacity

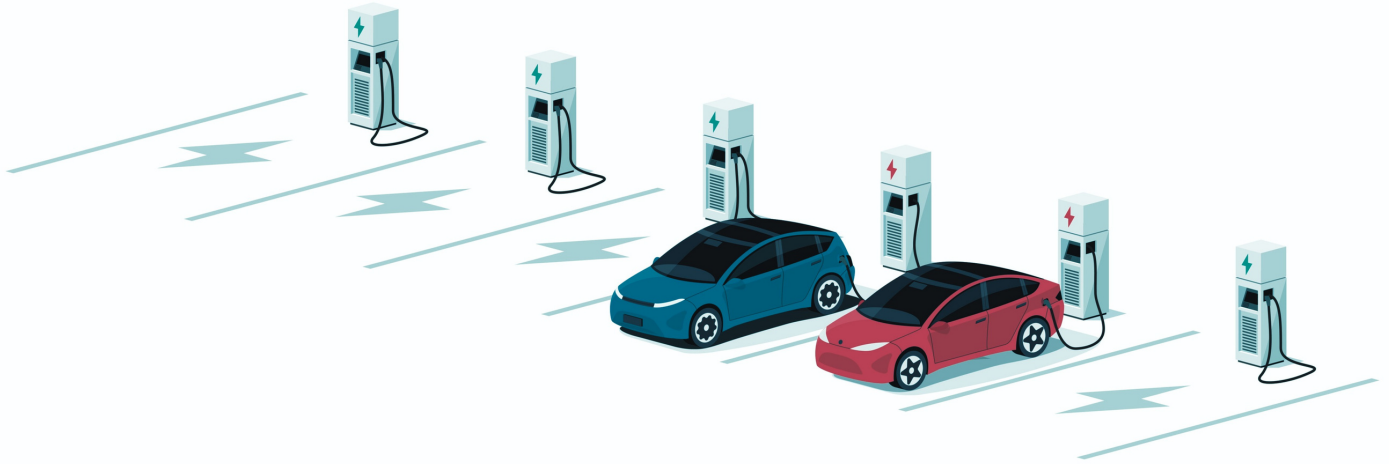


VIP

Subscription

Plug & Charge





Save on expensive electrical infrastructure upgrades

DLM ensures optimal distribution of the existing power capacity without the need for costly infrastructure upgrades. It further removes the necessity for physical wiring between the chargers and reduces installation and maintenance cost.



Smart prioritization opens new monetization opportunities

Electric Avenue software DLM enables you to prioritize charging speed per customer depending on their subscription or tariff plan.



Dynamic load limit adjustment via API

Achieve absolute flexibility by controlling the limit of the DLM circuit via an API.



Large scale deployments are made possible

In contrast to most hardware solutions, the software DLM enables you to manage virtually an unlimited number of charging stations at a location.



Hassle-free load management of different charge point manufacturers

Electric Avenue's OCPP based DLM allows you to manage chargers from different manufacturers. It enables an easier expansion of existing EV charger installations and optimized ROI.



Group an unlimited number of charge points in a circuit and apply a limit

You can group as many charge points as needed in a so-called DLM circuit and apply a power limit.